

# FORMER FAMILY DOLLAR AVAILABLE

3450 St. Stephens Road Prichard, AL 36612



## RETAIL PROPERTY FOR LEASE | Excellent Opportunity to Lease 7,647 SF Former Family Dollar

### Property Overview

Excellent Opportunity to Lease 7,647 SF Former Family Dollar

### Property Highlights

- Very good visibility
- Ample parking
- Pylon sign available
- Major area tenants include Piggly Wiggly, Dollar General and Walgreens
- Located just 3.9 miles from USA Health University Hospital and 6.4 miles from the University of South Alabama

Demographics	3 Miles	5 Miles	10 Miles
Total Households	14,111	36,008	111,812
Total Population	37,099	93,921	289,383
Average HH Income	\$34,597	\$46,500	\$53,099

### Traffic Counts

enter text here...

enter text here...

**SCOTT PLUMMER**  
 205.490.2829  
 scott.plummer@retailspecialists.com

**SID KNIGHT**  
 205.905.5709  
 sid@retailspecialists.com

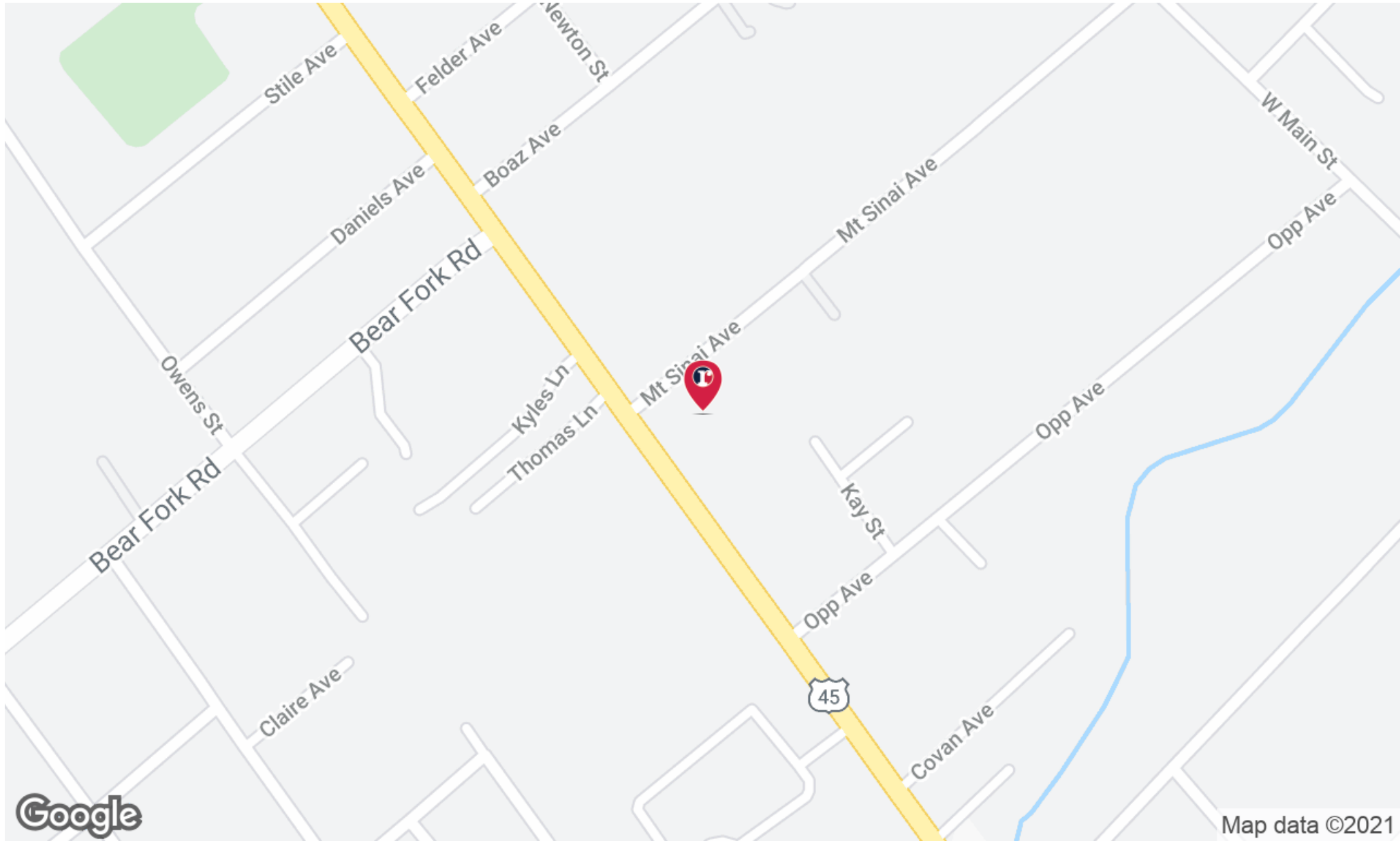
No warranty expressed or implied has been made as to the accuracy of the information provided herein, no liability for error or omissions.

RETAIL SPECIALISTS  
 Birmingham | Atlanta  
 retailspecialists.com

# FORMER FAMILY DOLLAR AVAILABLE

3450 St. Stephens Road Prichard, AL 36612

LOCATION MAP | FOR LEASE



**SCOTT PLUMMER**

205.490.2829  
scott.plummer@retailspecialists.com

**SID KNIGHT**

205.905.5709  
sid@retailspecialists.com

No warranty expressed or implied has been made as to the accuracy of the information provided herein, no liability for error or omissions.

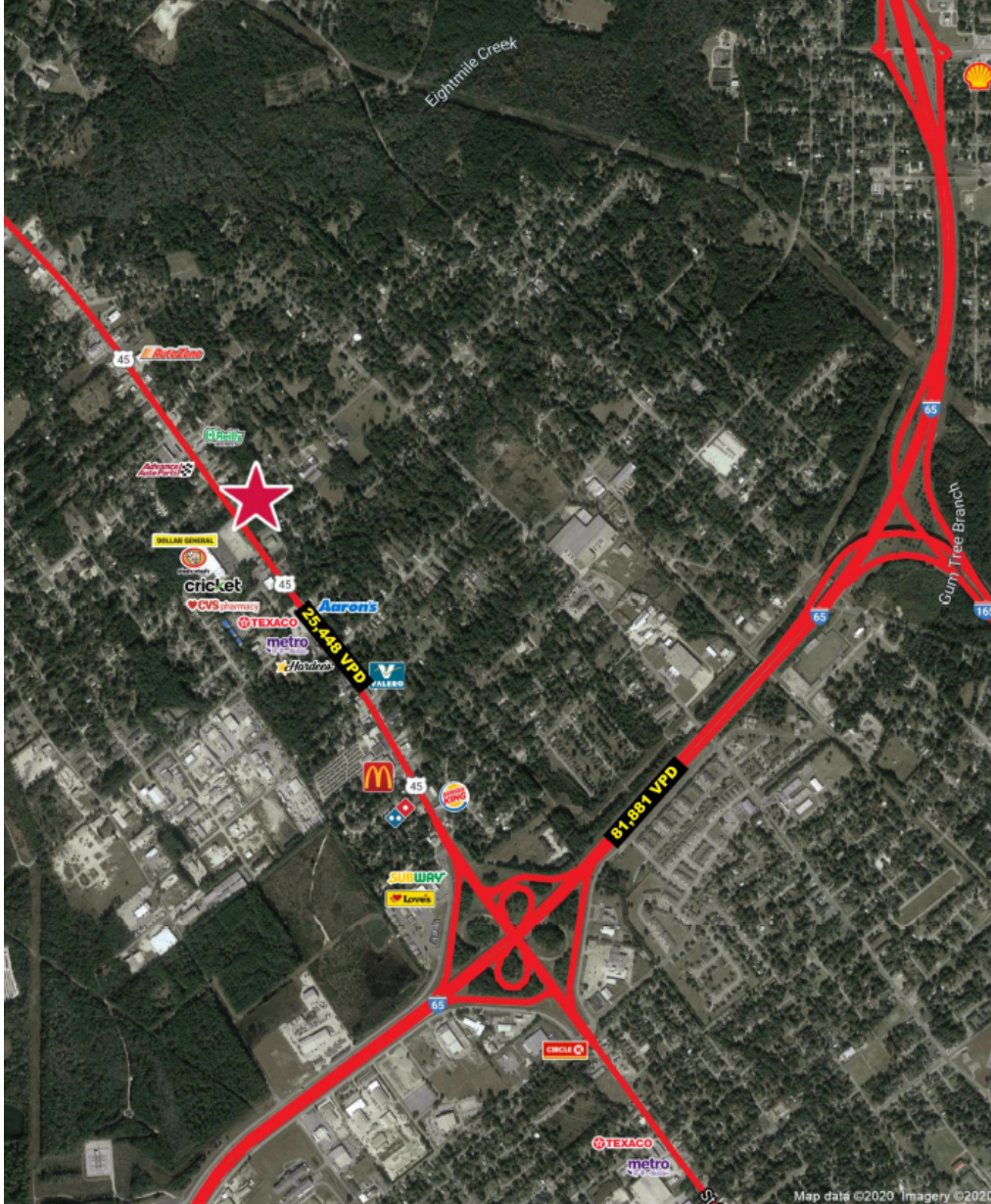
RETAIL SPECIALISTS  
Birmingham | Atlanta  
retailspecialists.com



# FORMER FAMILY DOLLAR AVAILABLE

3450 St. Stephens Road Prichard, AL 36612

ADDITIONAL PHOTOS | FOR LEASE



**SCOTT PLUMMER**  
205.490.2829  
scott.plummer@retailspecialists.com

**SID KNIGHT**  
205.905.5709  
sid@retailspecialists.com

No warranty expressed or implied has been made as to the accuracy of the information provided herein, no liability for error or omissions.

RETAIL SPECIALISTS  
Birmingham | Atlanta  
retailspecialists.com



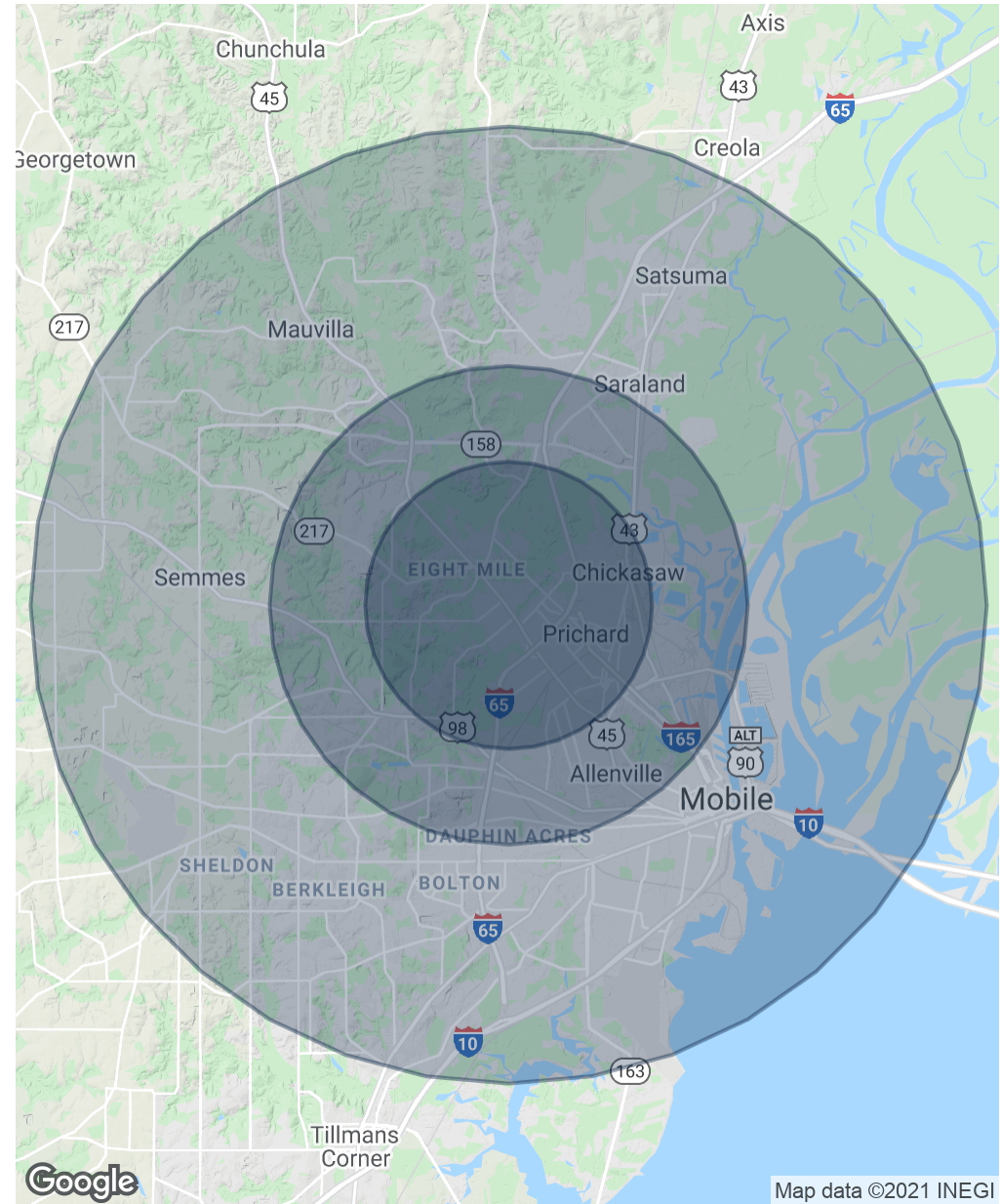
# FORMER FAMILY DOLLAR AVAILABLE

3450 St. Stephens Road Prichard, AL 36612

Population	3 Miles	5 Miles	10 Miles
Total Population	37,099	93,921	289,383
Average age	37.4	37.8	36.6
Average age (Male)	34.2	35.2	34.6
Average age (Female)	40.6	40.2	38.3

Households & Income	3 Miles	5 Miles	10 Miles
Total households	14,111	36,008	111,812
# of persons per HH	2.6	2.6	2.6
Average HH income	\$34,597	\$46,500	\$53,099
Average house value	\$73,531	\$107,301	\$149,629

\* Demographic data derived from 2010 US Census



Map data ©2021 INEGI

**SCOTT PLUMMER**  
 205.490.2829  
 scott.plummer@retailspecialists.com

**SID KNIGHT**  
 205.905.5709  
 sid@retailspecialists.com

No warranty expressed or implied has been made as to the accuracy of the information provided herein, no liability for error or omissions.