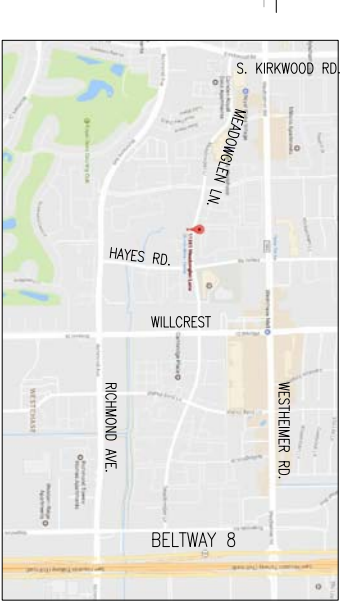
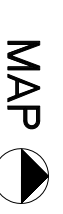
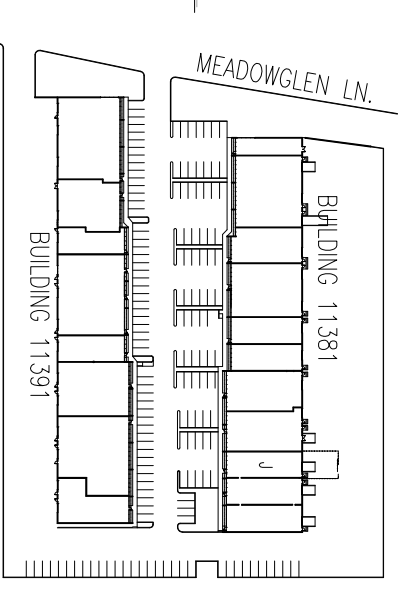


MEADOWGLEN BUSINESS PARK
11381 MEADOWGLEN, SUITE J
HOUSTON TEXAS 77082



SITE PLAN

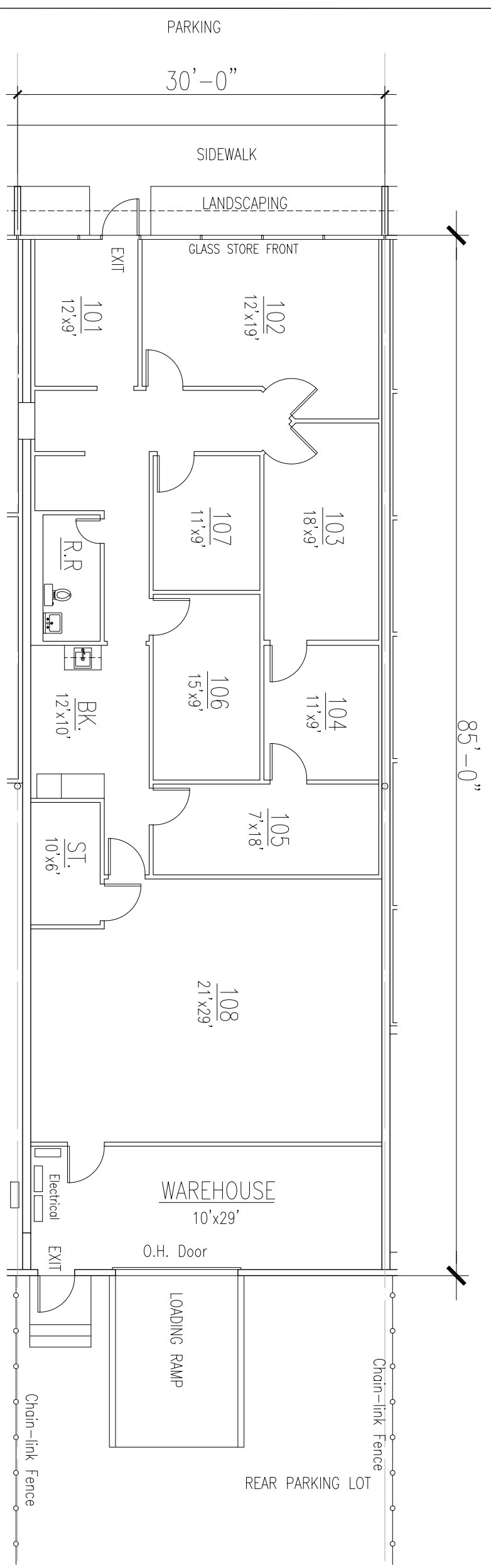


BUILDING SUMMARY

OFFICE AREA: 2,250 SQ. FT.
 WAREHOUSE AREA: 300 SQ. FT.
 TOTAL AREA: 2,550 SQ. FT.

BUILDING FEATURES

MASTER PLANNED BUSINESS PARK
 CONCRETE TILT WALL CONSTRUCTION
 SEMI DOCK HIGH REAR LOADING DOOR WITH RAMP
 14' AVERAGE CLEAR HEIGHT
 ALL CONCRETE PAVING



SUITE J FLOOR PLAN

