



6629 VAN NUYS BLVD, VAN NUYS, CA 91405

Retail



FOR LEASE

OFFERING MEMORANDUM



PROPERTY HIGHLIGHTS

- Located in the Heart of Van Nuys
- Offers Easy Access to Major Highways, Shopping Centers, and Public Transportation
- Large Parking Area, Accommodating Multiple Vehicles for Tenants or Clients
- Diverse Tenant mix boasts a range of National tenants
- Strong demographics and Traffic Counts

PROPERTY TYPE
Retail

AVAILABLE FOR LEASE
1,800 SF

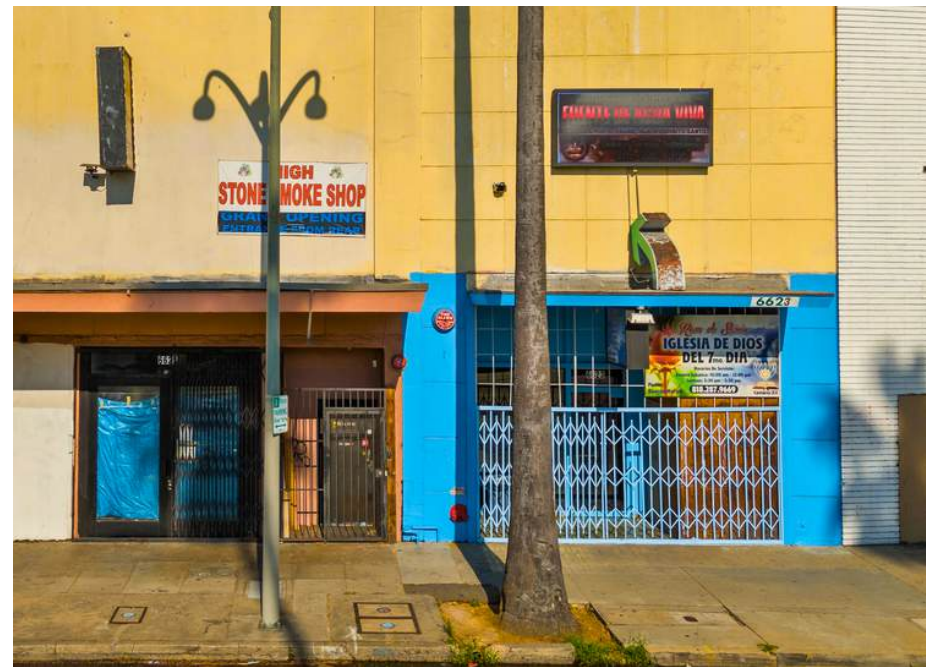
PARCEL NUMBER
2236-010-006

LOT
23,974 SF

YEAR BUILT
1954

ZONING
LAP

PROPERTY PHOTOS



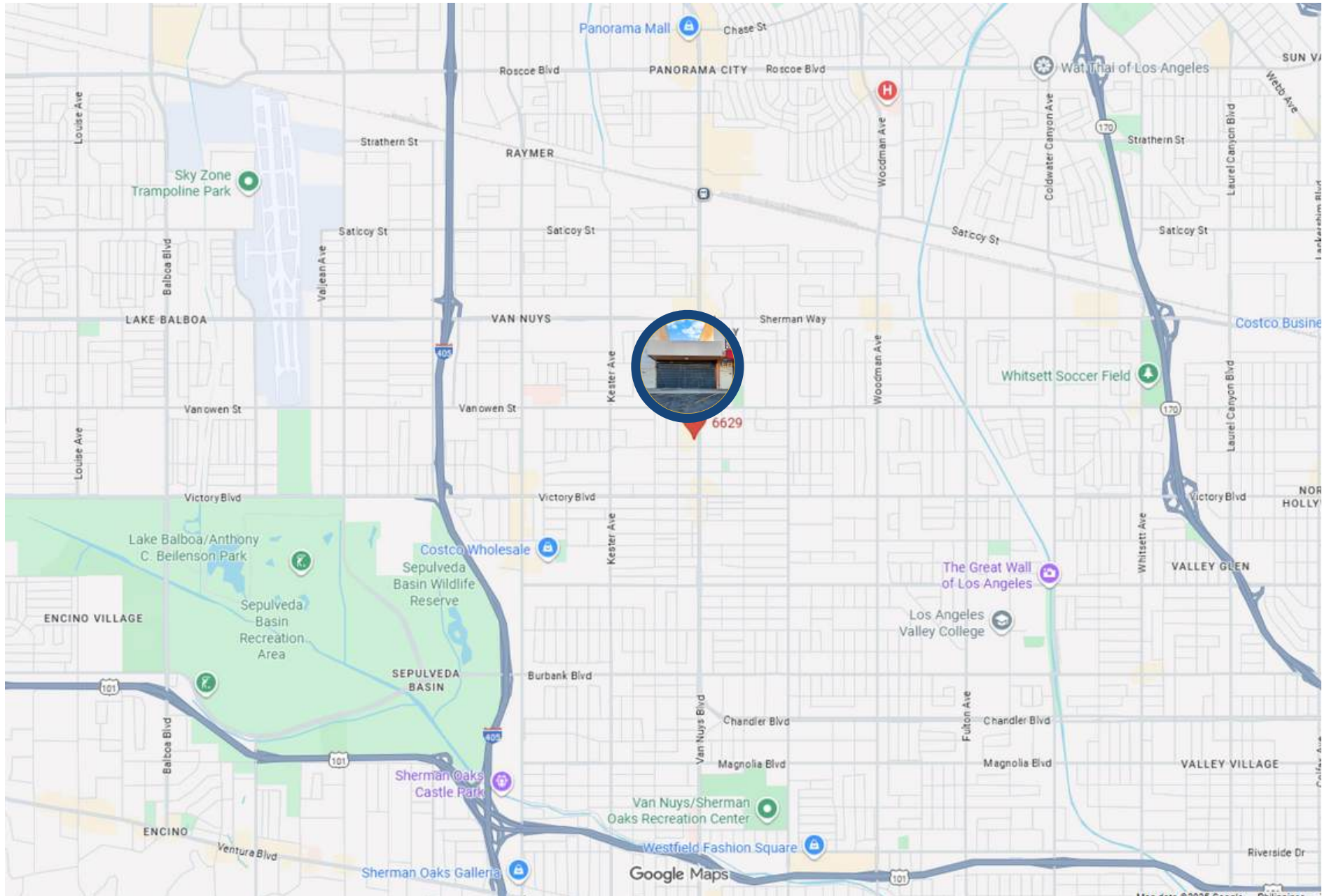
PROPERTY PHOTOS



RETAIL MAP



LOCATION MAP



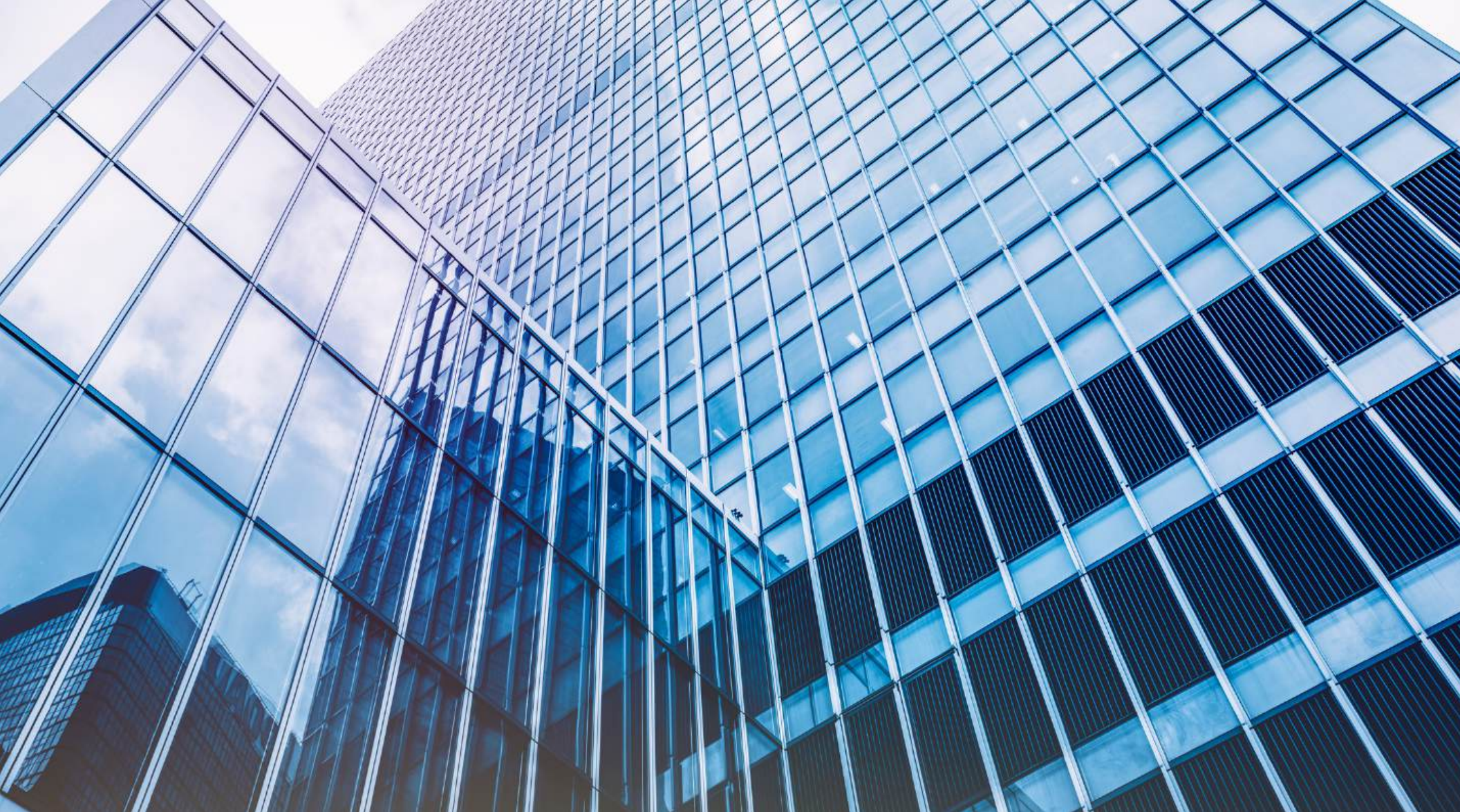


Category	1 Mile	3 Mile	5 Mile
2024 Total Population	55,262	320,980	721,815
2029 Population	53,684	312,935	702,352
Pop Growth 2024-2029	-2.86%	-2.51%	-2.70%
Average Age	37.10	38.40	39.10
2024 Total Households	18,249	111,539	248,727
HH Growth 2024-2029	-3.05%	-2.76%	-2.86%
Median Household Income	\$55,379	\$64,532	\$73,061
Avg Household Size	2.90	2.80	2.80
2024 Avg HH Vehicles	2	2	2
Median Home Value	\$704,327	\$775,442	\$802,991
Median Year Built	1973	1969	1967



The information contained in the following listing is proprietary and strictly confidential. It is intended to be reviewed only by the party receiving it from Equity Union Commercial and it should not be made available to any other person or entity without the written consent of Equity Union Commercial. By taking possession of and reviewing the information contained herein the recipient agrees to hold and treat all such information in the strictest confidence. The recipient further agrees that the recipient will not photocopy or duplicate any part of the email content. If you have no interest in the subject property, please promptly delete this email. This email has been prepared to provide summary, unverified financial and physical information to prospective purchasers, and to establish only a preliminary level of interest in the subject property. The information contained herein is not a substitute for a thorough due diligence investigation. Equity Union Commercial has not made any investigation, and makes no warranty or representation with respect to the income or expenses for the subject property, the future projected financial performance of the property, the size and square footage of the property and improvements, the presence or absence of contaminating substances, PCBs or asbestos, the compliance with local, state and federal regulations, the physical condition of the improvements thereon, or financial condition or business prospects of any tenant, or any tenant's plans or intentions to continue its occupancy of the subject property. The information contained in this offering memorandum has been obtained from sources we believe we believe reliable; however, Equity Union Commercial has not verified, and will not verify, any of the information contained herein, nor has Equity Union Commercial conducted any investigation regarding these matters and makes no warranty or representation whatsoever regarding the accuracy or completeness of the information provided. All potential buyers must take appropriate measures to verify all of the information set forth herein. Prospective buyers shall be responsible for their costs and expenses of investigating the subject property. verified,





BLAS FERNANDEZ
DIRECTOR, COMMERCIAL INVESTMENTS

818.319.9191
blas@ikonpropertiesla.com
ikonpropertiesla.com
LIC NO. 02012036



BRIAN VU
INVESTMENT ASSOCIATE

818.913.8819
brian@ikonpropertiesla.com
ikonpropertiesla.com
LIC NO. 02181861

