

WAYNE ROAD ROMULUS, MICHIGAN

LAND FOR SALE
0.64 Acre Available

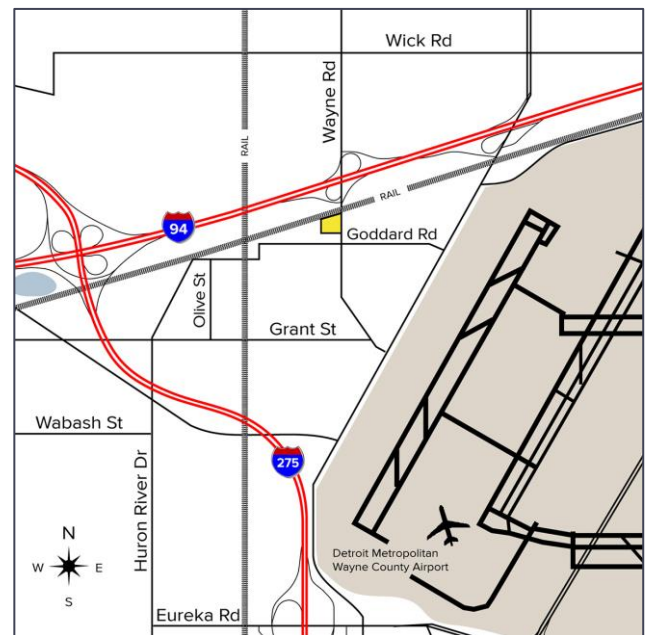


**SIGNATURE
ASSOCIATES**
KNOW SIGNATURE | KNOW RESULTS



PROPERTY FEATURES

- 0.64 acre available
- Zoned CBD-1
- Vacant land located just south of I-94 near Metro Airport in Romulus
- Adjacent to new Concentra Urgent Care
- Asking Price: \$99,840.00



For more information, please contact:

JUSTIN GAFFREY
(248) 799 3143
jgaffrey@signatureassociates.com

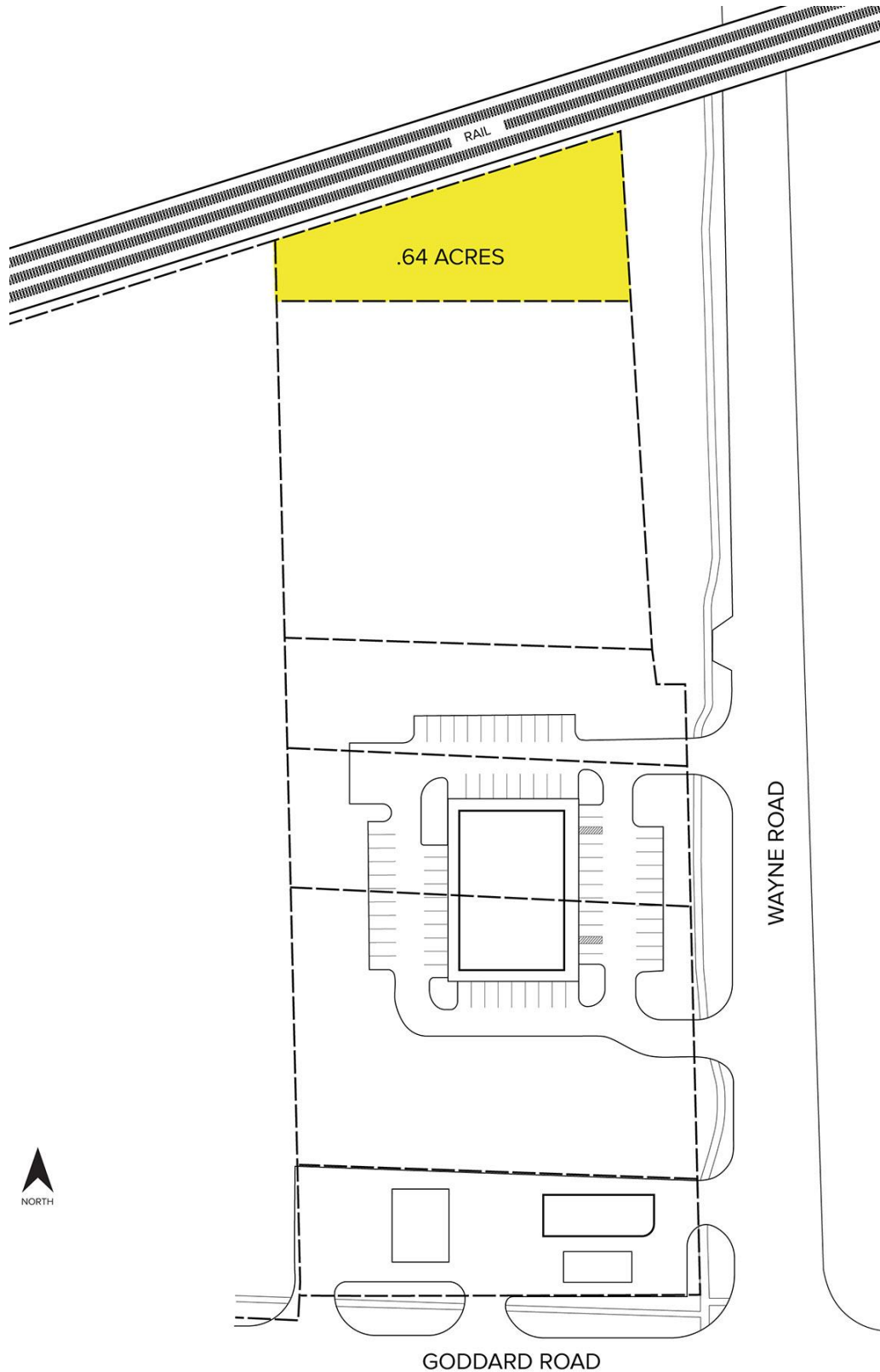
SIGNATURE ASSOCIATES
One Towne Square, Suite 1200
Southfield, MI 48076
www.signatureassociates.com

Wayne Road – Romulus, Michigan

Land For Sale

0.64
Acre
AVAILABLE

Site Plan



For more information, please contact:

JUSTIN GAFFREY
(248) 799 3143
jgaffrey@signatureassociates.com

SIGNATURE ASSOCIATES
One Towne Square, Suite 1200
Southfield, MI 48076
www.signatureassociates.com

Information is subject to verification and no liability for errors or omissions is assumed. Price is subject to change and listing withdrawal.

Wayne Road – Romulus, Michigan

Land For Sale

0.64
Acre
AVAILABLE

Labeled Aerial



For more information, please contact:

JUSTIN GAFFREY

(248) 799 3143

jgaffrey@signatureassociates.com

SIGNATURE ASSOCIATES

One Towne Square, Suite 1200

Southfield, MI 48076

www.signatureassociates.com