



**FOR  
LEASE**

## Park 37

**5233 I.H. 37, Corpus Christi, TX 78408**  
**6,000 or 6,600 sq foot fenced and paved**  
**outside storage yards for lease**



Jack and Ben Super  
 SuperTex Properties L.P.  
 Super Commercial Properties  
 4531 Ayers Street, Suite 201, Corpus Christi, TX 78415  
 (361) 853-3003 Fax: (361) 853-9141 cell: (361) 215-8018



# SuperTex Properties

4531 Ayers, Suite 201

Corpus Christi, Texas 78415

Phone (361) 853-3003 Fax: (361) 853-9141

zjsuper@gmail.com

For Lease

## **Park 37**

6,000 or 6,600 sq foot fenced and paved  
outside storage yards

Address: 5233 I.H. 37, Corpus Christi, TX 78408

Description: Park 37 is located on Interstate Highway 37 at Navigation in the Refinery district. It consists of three well maintained buildings comprising of over 67,000 square feet of warehouse & office space. Ideal for industrial, manufacturing, office, showroom and warehouse uses.

For Lease: Front Yard 6,000 Sq Feet In front of the building facing the street  
\$900 per month (\$0.14 /sf)

Back Yard 6,600 Sq Feet In the back of Building C  
\$900 per month (\$0.14 /sf)

Features: Flexible lease terms  
Situated on 4.75 acres; Zoned Industrial (I-2)  
Ample parking on each side of the building  
Concrete Tilt-up;  
Built in 1984;  
Remodeled in 2000  
Local management

Broker Coop: 3% Broker Cooperation Encouraged

Corpus Christi: Corpus Christi, Texas is a desirable place to live due to its beautiful beaches, subtropical climate, affordable cost of living, and rich cultural heritage. The city's location on the Gulf of America provides ample opportunities for water sports, swimming, and enjoying fresh seafood. Catering to diverse interests, Corpus Christi, offers a variety of attractions, including the Texas State Aquarium, the USS Lexington Museum and the Selena museum.

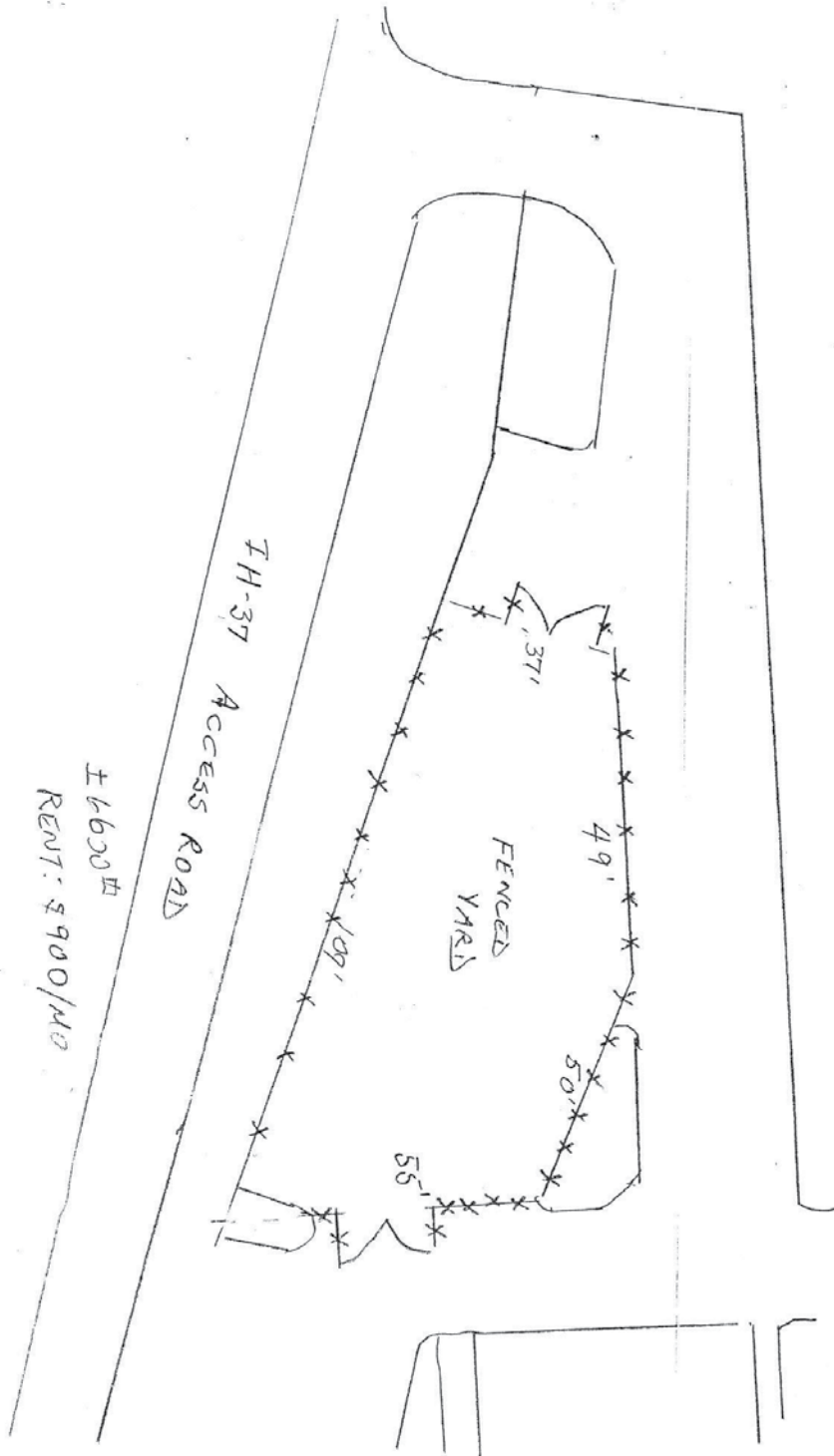
**Park 37**

5233 I.H. 37, Corpus Christi, TX 78408

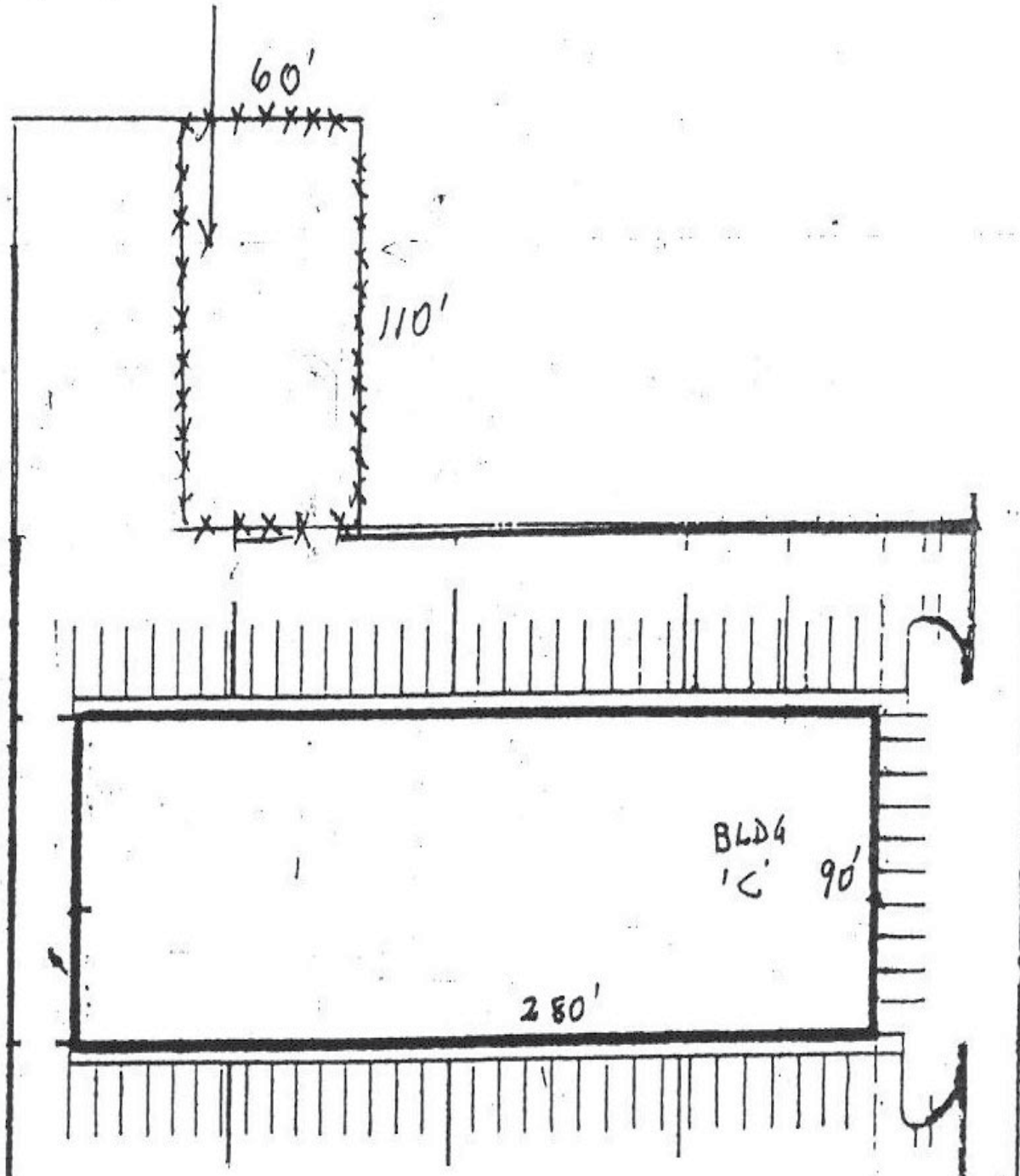
Front Yard

6,000 Sq Feet

In front of the building facing the street



**Park 37**  
5233 I.H. 37, Corpus Christi, TX 78408  
Back Yard  
6,600 Sq Feet  
In back of Building C





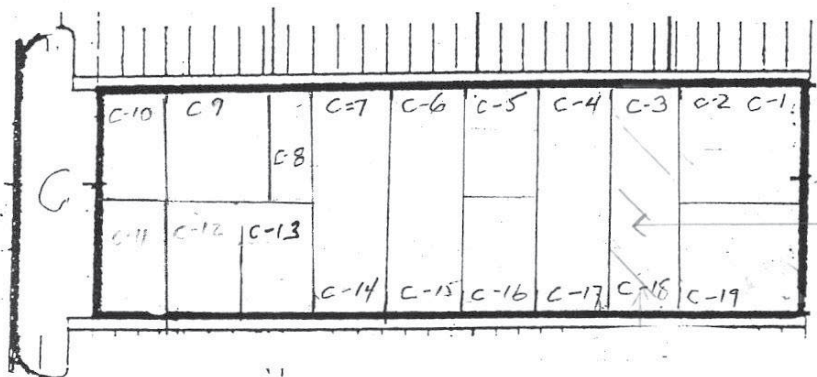
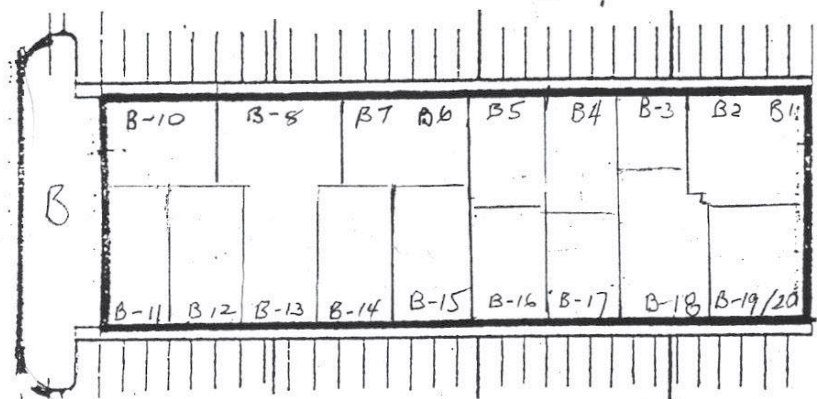
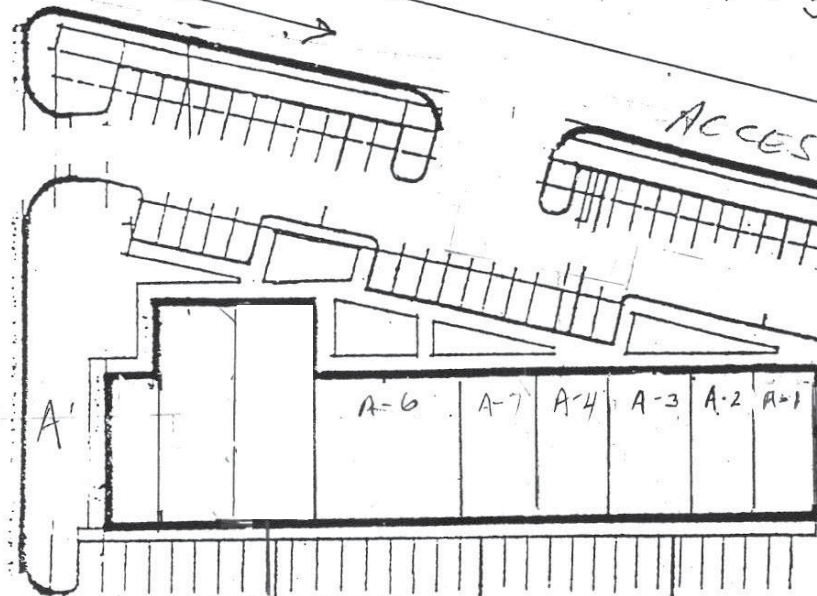
I-H-37

ACCESS ROAD

NAVIGATIL

Front Storage  
Yard  
For Lease

KILL STREET



SUBJECT

SITE PLAN

PARK 37

5233 IH-37

CORPUS CHRISTI

TX 78408

Back  
Storage  
Yard  
For  
Lease

EXHIBIT A

PAGE 1 OF 3







Park 37 Front Yard; 6,000 Sq Feet







Park 37 Back Yard; 6,600 Sq Feet



Park 37



Park 37





Park 37



Park 37



**Park 37**  
**5233 I.H. 37, Corpus Christi, TX 78408**  
**Industrial, office, showroom and warehouse**

