



MERCHANTS EXCHANGE BUILDING

465 CALIFORNIA STREET

OFFICE SPACE FOR LEASE

THOMAS MCKINLEY

Head Of Real Estate



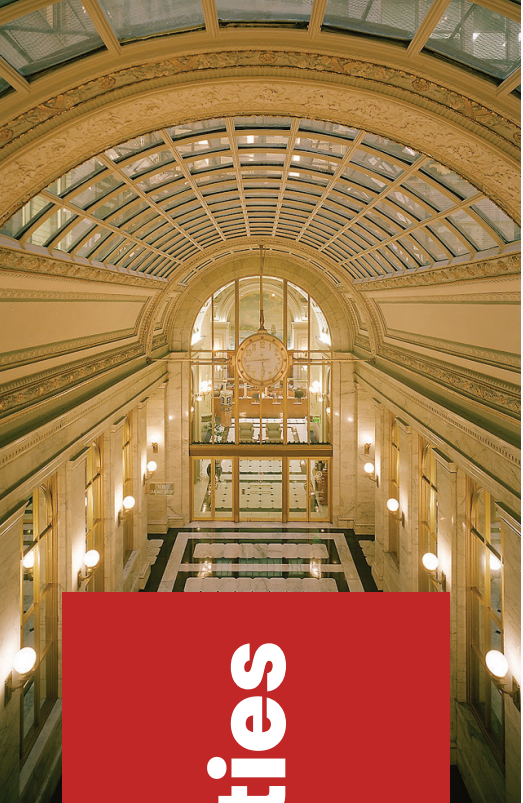
207.837.3243



thomas@clintonreilly.com



<https://clintreilly.com>



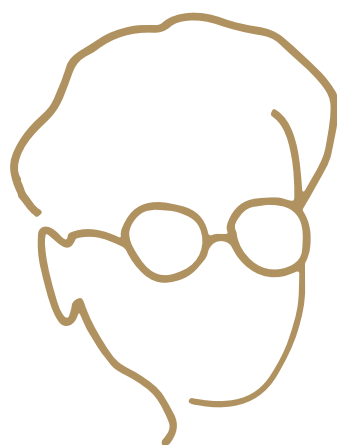
Leasing Opportunities

MODERN. CLASSIC.

The Merchants Exchange building redefines the concept of the “Historic Class A” office building.

Designed in 1903 and meticulously updated with state-of-the-art amenities, the building has served as the hub of civic and financial activity for more than a century. Today, the building is also home to two of the City’s most coveted private event spaces, the Julia Morgan Ballroom and the Merchants Exchange Club. With more than 110 years of unparalleled San Francisco history, we invite you to write your own chapter with us as a tenant at the Merchants Exchange.

Located in the heart of San Francisco’s financial district, The Merchants Exchange has been a center for the City’s civic, economic, political, and cultural life for over 100 years. The building’s distinctive architecture, history of notable inhabitants, and ideal location have resulted in making it a prominent landmark.

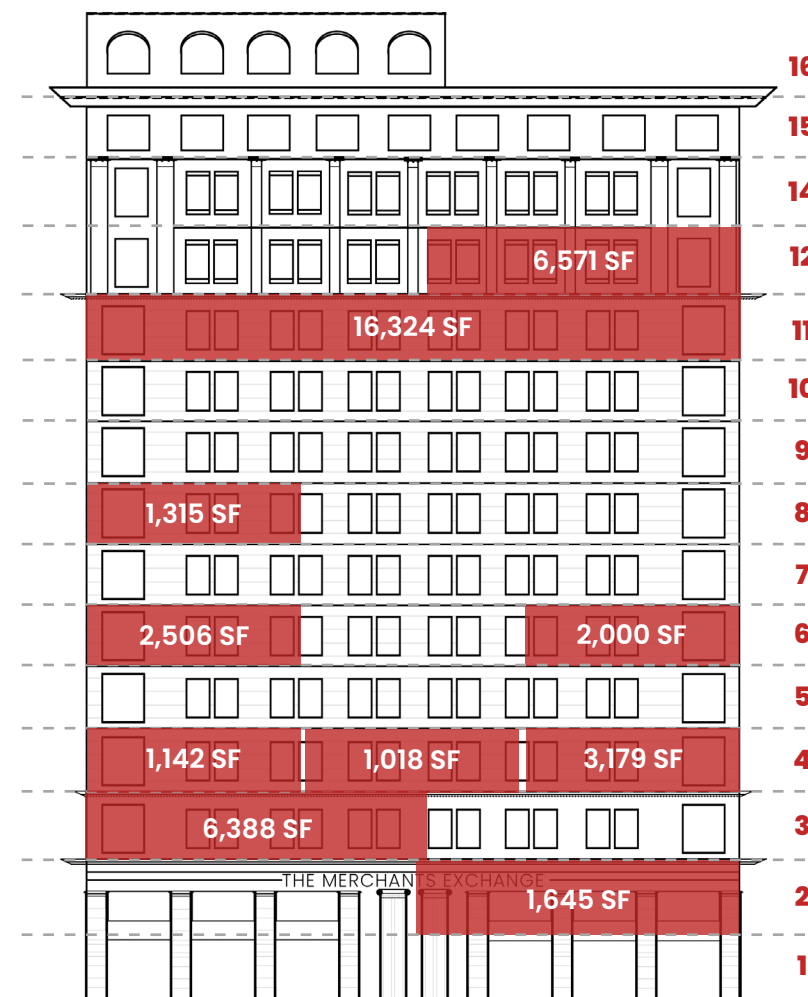


JULIA MORGAN
BALLROOM

The Julia Morgan Ballroom at the Merchants Exchange is the most coveted special event venue in San Francisco. An architectural masterpiece, the Ballroom combines a timeless Beaux-Arts interior with superior modern amenities. The Ballroom’s historic significance, breathtaking details, and professional production staff earn its top-tier spot among San Francisco’s elite wedding venues, party venues, and other special event facilities.

465 CALIFORNIA ST.
SAN FRANCISCO, CA

A San Francisco Icon



THE MERCHANTS EXCHANGE

Building Details

16 Floors

245,000+/- Rentable sqft

Great Building Amenities

Floorplates: 16,000sf +/-Use:

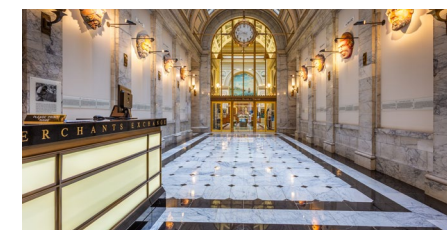
Office / Retail / Events **Three**

Private Venue Spaces



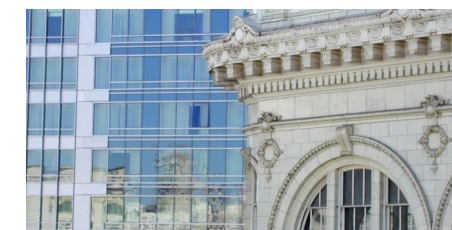
TRANSIT-ORIENTED.

Located at the corner of California and Montgomery Streets in downtown San Francisco, the Merchants Exchange is located within walking distance to BART, and Muni, and sits on the historic California St. Cable Car line. The building is also conveniently located near several parking garages within walking distance.



BUILDING AMENITIES.

Designed in 1903 and meticulously updated with state-of-the-art amenities, The Merchants Exchange building redefines the concept of the “Historic Class A” office building. Building amenities include 24-hour access, a guard-serviced lobby, on-site private event spaces, an atrium, and dedicated on-site professional management.



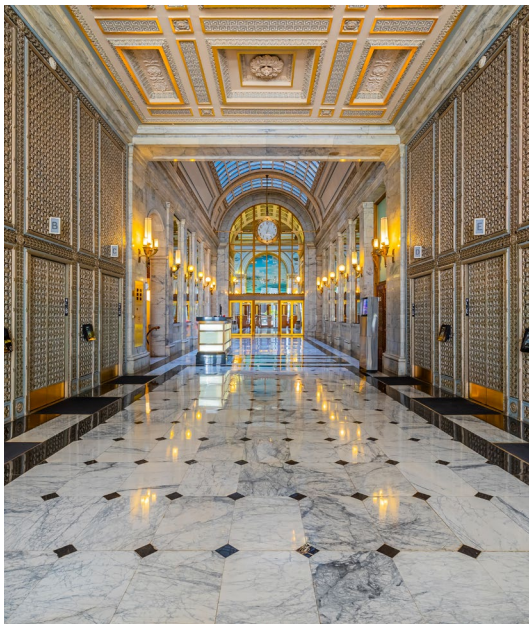
HISTORY.

Situated in the heart of San Francisco’s financial district, The Merchants Exchange has been a center for the City’s civic, economic, political, and cultural life for over 100 years. Built in 1904, the building’s distinctive architecture, history of notable inhabitants, and ideal location have resulted in making it a prominent landmark.

Availabilities



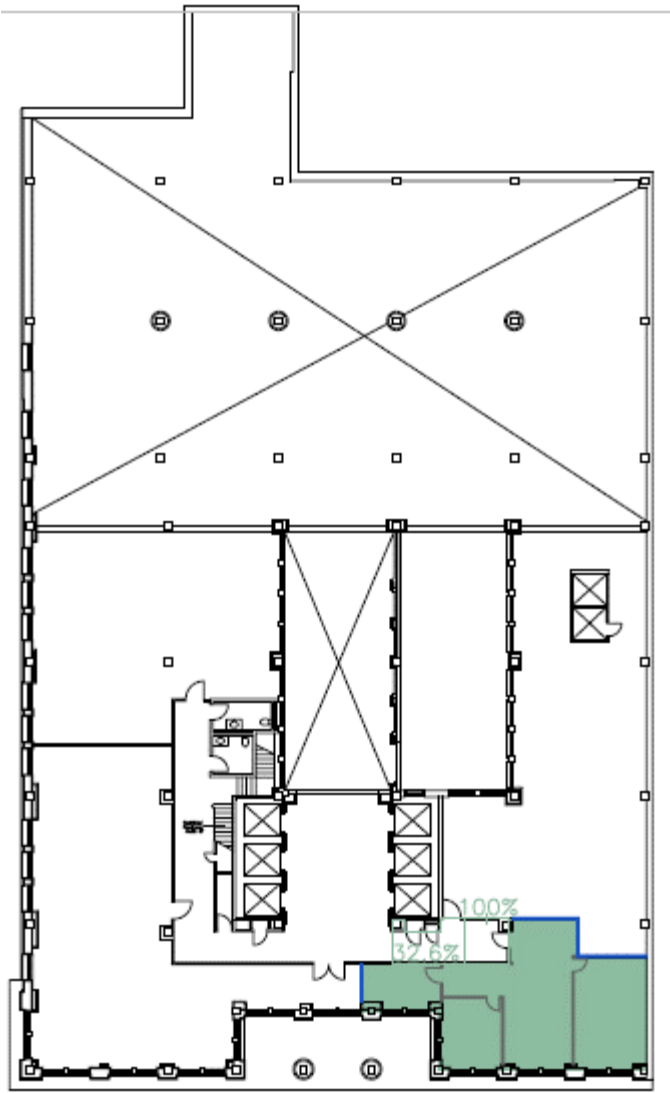
FLOOR	SUITE	SIZE	DELIVERY DATE
2ND	250	1,645 RSF	Now
3RD	350	6,388 RSF	Now
4TH	435	1,142 RSF	Now
4TH	449	1,018 RSF	Now
4TH	475	3,179 RSF	Now
6TH	611	2,506 RSF	Now
6TH	635	2,000 RSF	Now
8TH	809	1,315 RSF	Now
11TH	1100	16,324 RSF	Now
12TH	1200	6,571 RSF	30 Days

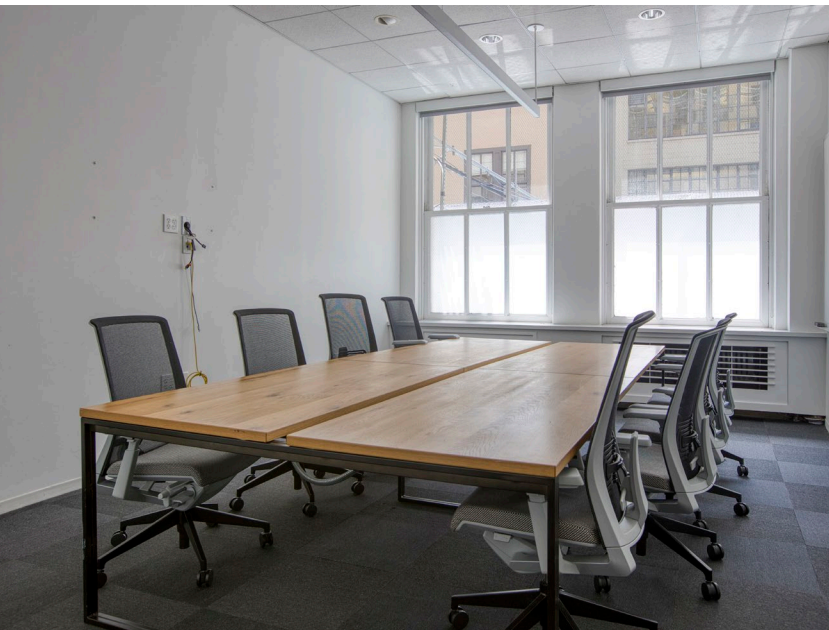


SUITE 250 – 1,645 RSF

AVAILABLE NOW

- 11 Ft Ceilings
- 1 Private Offices/Breakout Room
- 1 Large Conference Room
- Open Area
- IT Closet
- California St. Facade windows
- Flexible Terms
- New Kitchenette

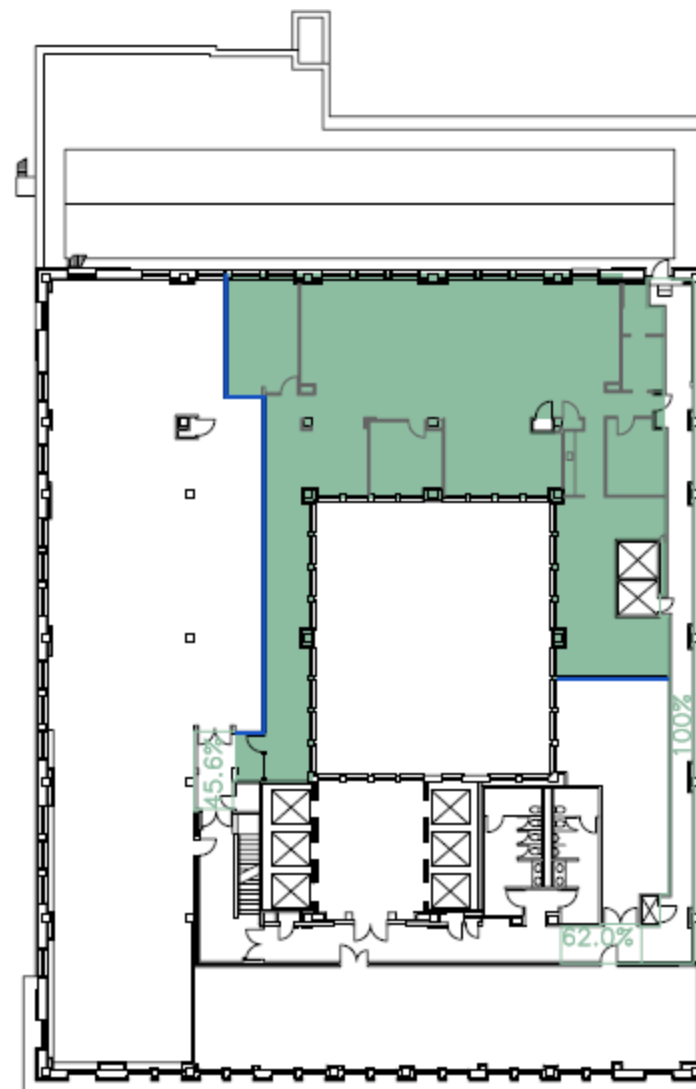
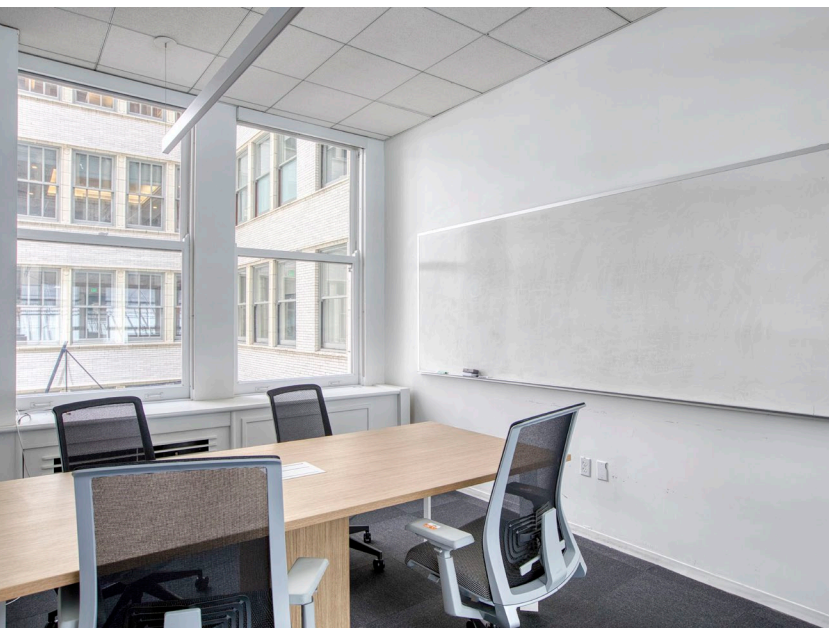
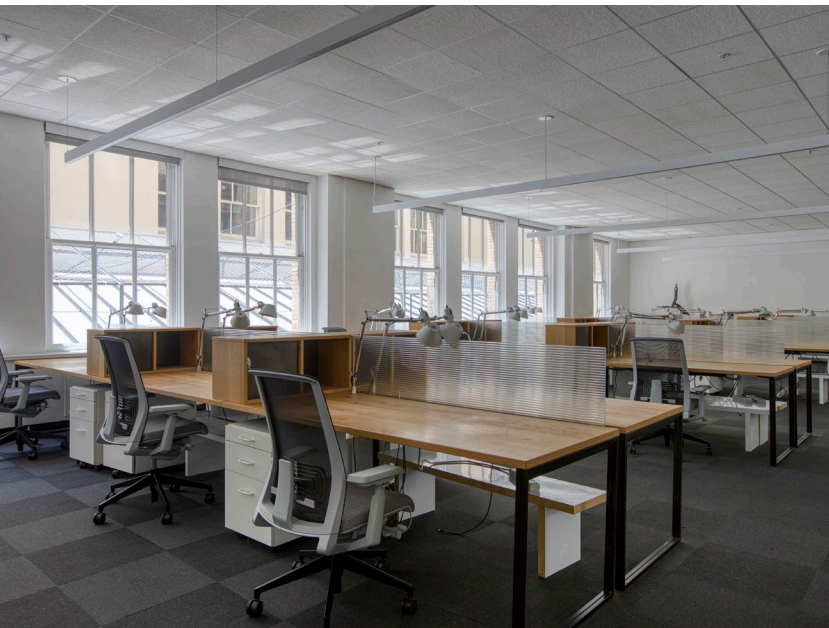




SUITE 350 – 6,388 RSF

AVAILABLE NOW

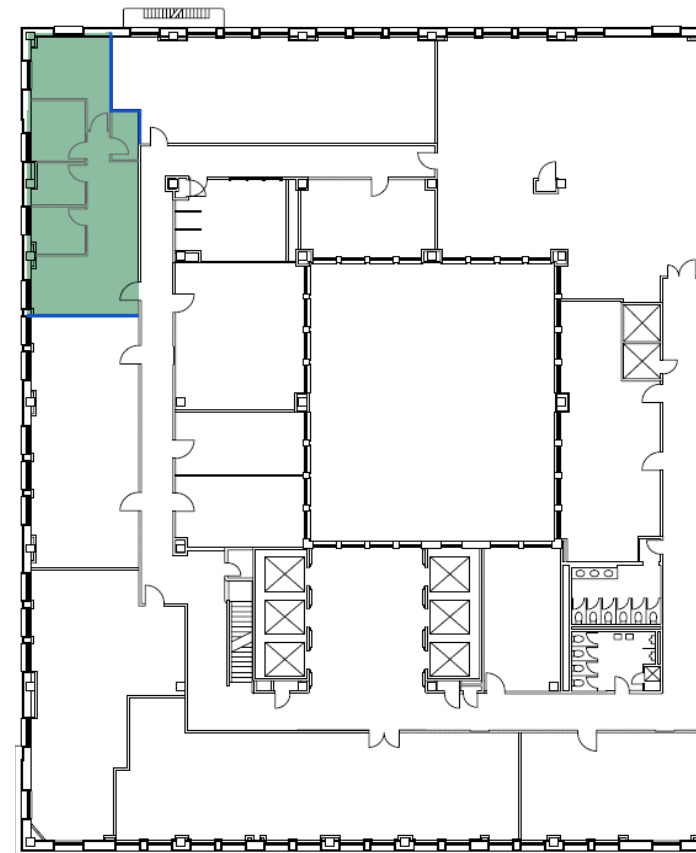
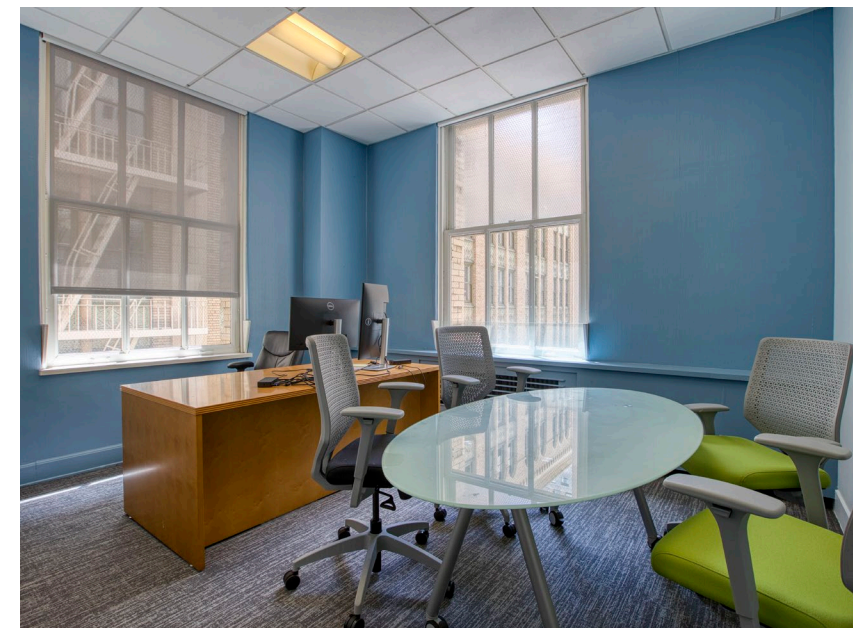
- 11 Ft Ceilings
- Breakout Room W/ Tables & Chairs
- 1 Large Conference Room W/ Tables & Chairs
- Open Area W/ 34 Modern Sit/Stand Desks
- IT Closet
- 4 Sides of Glass With Ample Natural Light
- Remodeled Kitchen
- Open Area Break Room
- Updated Kitchen



SUITE 435 – 1,142 RSF

AVAILABLE NOW

- 11 Ft Ceilings
- 3 Private Offices/Breakout Room
- 1 Large Conference Room
- Open Area
- IT Closet
- Leidsdorf Alley Windows Providing Ample Light
- Flexible Terms
- Landlord Can Provide Furniture

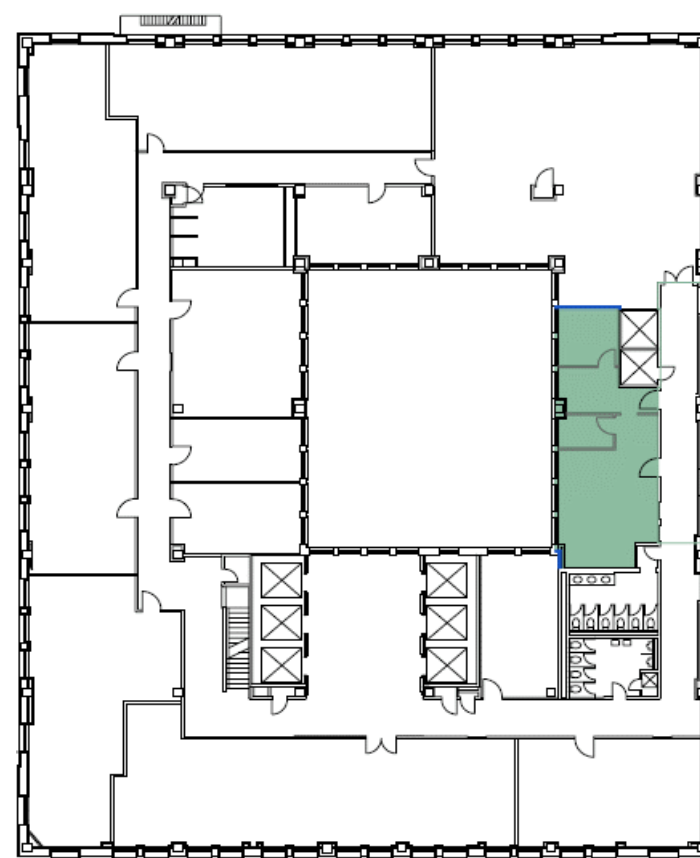




SUITE 449 – 1,018 RSF

AVAILABLE NOW

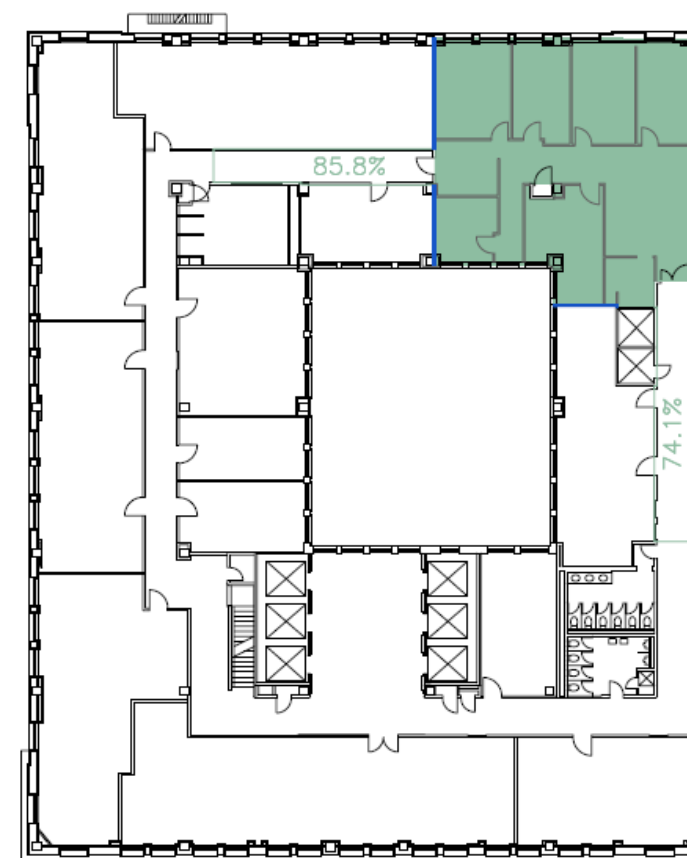
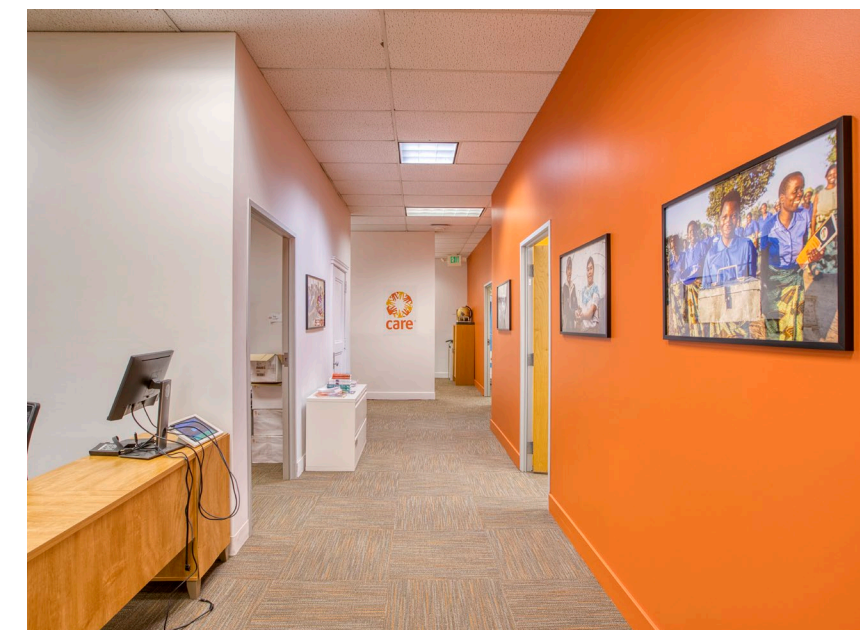
- 1 Drop in Phone Room
- 1 Private Office/Conference Room
- New Kitchenette



SUITE 475 – 3,179 RSF

AVAILABLE NOW

- Efficient Space With 6 Offices
- Interior Windows With Natural Light
- Refurbished Kitchen
- Flexible Terms
- Landlord Can Provide Furniture

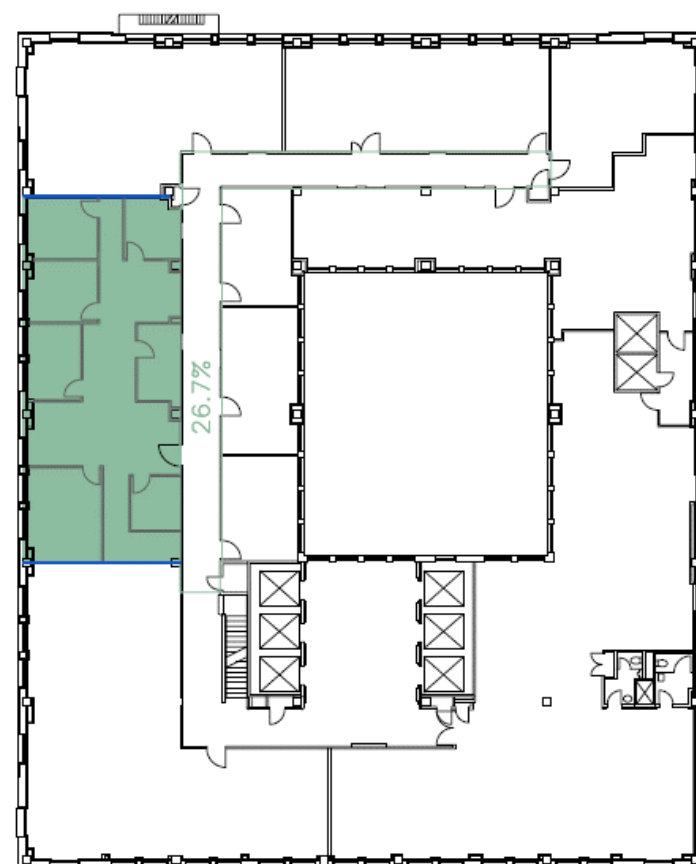
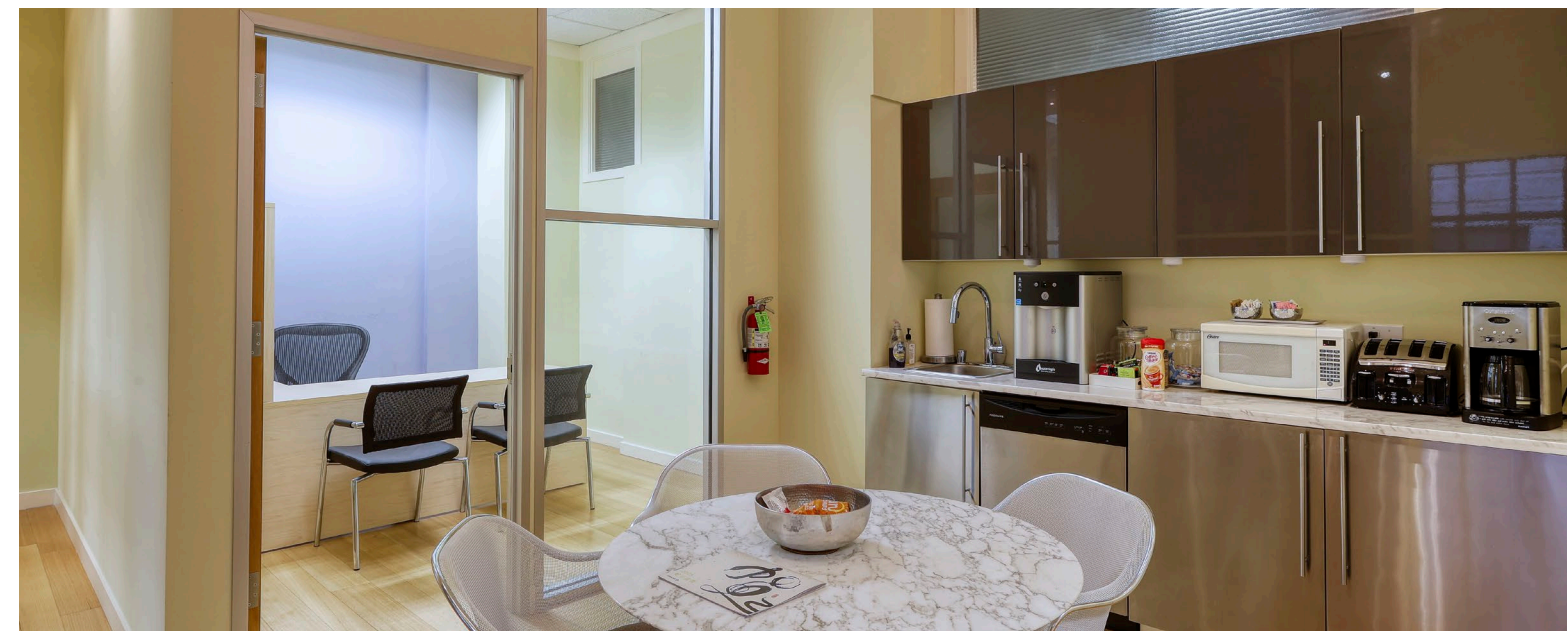




SUITE 611 - 2,506 RSF

AVAILABLE NOW

- Creative Office Finishes
- Suite Length Window Line with Great Natural Light
- 5 Private Offices and a Conference Room
- Modern Kitchen and Kitchenettes

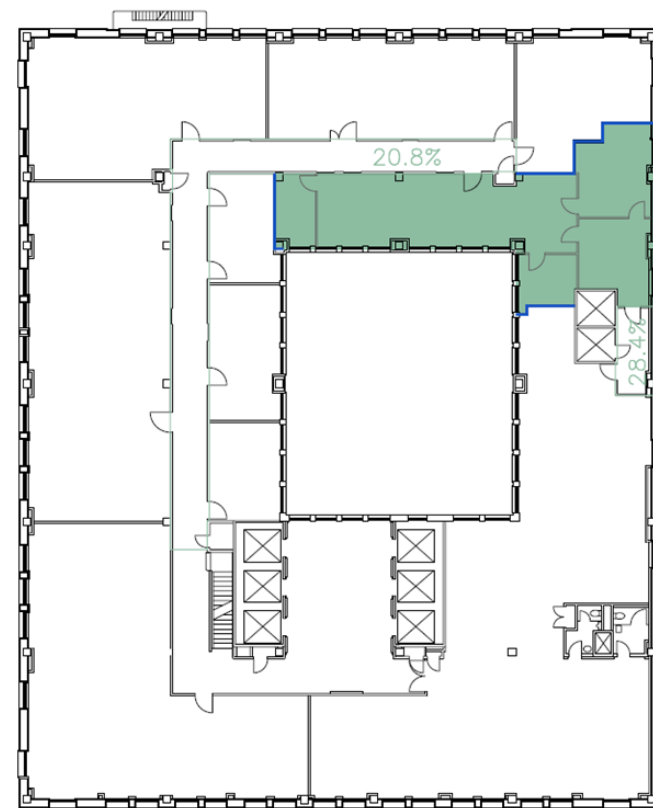




SUITE 635 – 2,000 RSF

AVAILABLE NOW

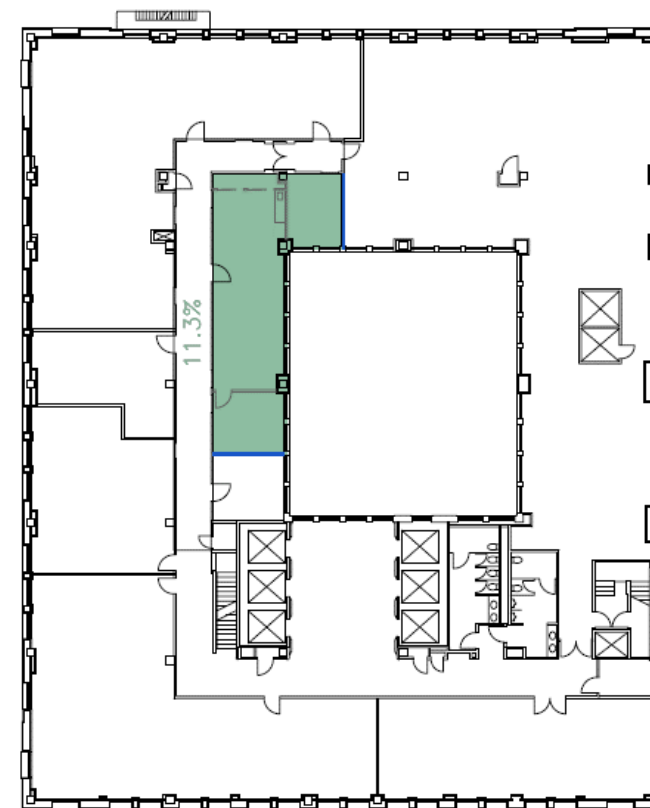
- 11 Ft Ceilings
- 2 Private Offices/Breakout Room
- 1 Large Conference Room
- Open Area
- 10 Sit/Stand Desks, 3 Conference W/ Tables & Chairs Included
- Flexible Terms
- Modern Kitchen



SUITE 809 – 1,315 RSF

AVAILABLE NOW

- Efficient Space Furnished With 7 Desks/ Chairs, 2 Private Office Work Stations
- Interior Windows with Natural Light
- Refurbished Kitchenette
- New Carpet & Paint

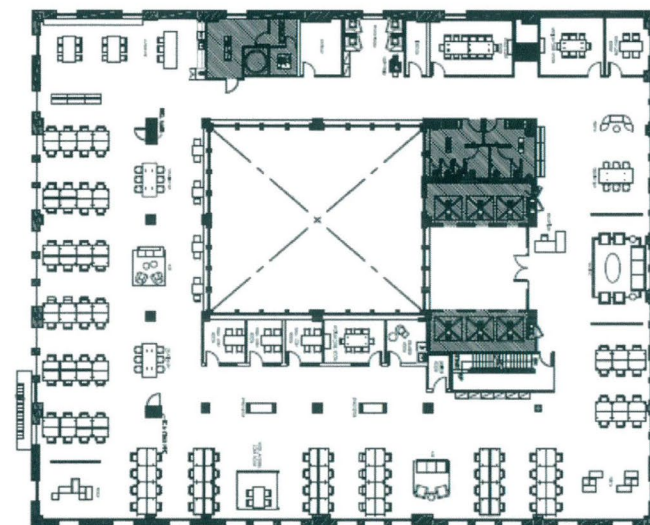
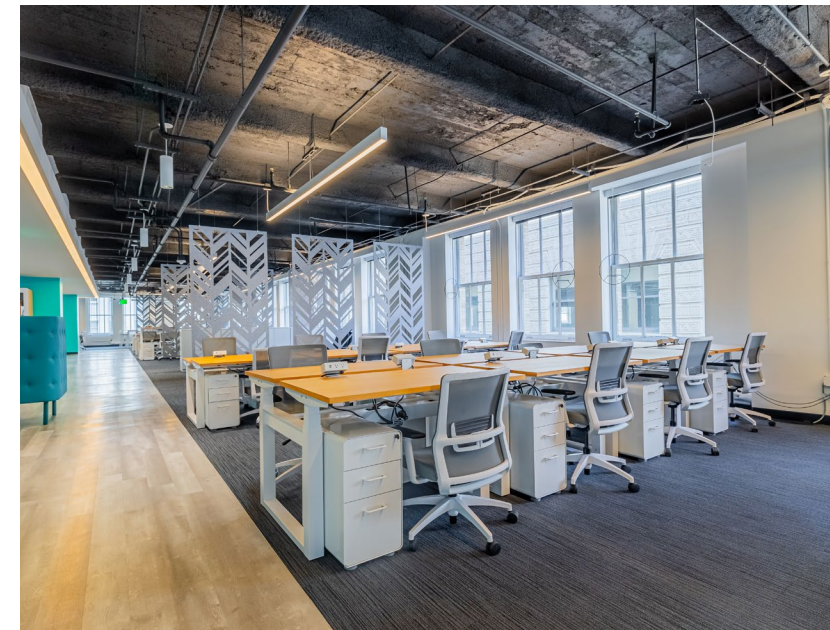




SUITE 1100 – 16,324 RSF

AVAILABLE NOW

- 12 Ft Ceilings
- 1 Private Office/Breakout Room
- 7 Large Conference Rooms
- Open Area
- 7 Sides of Glass With Ample Natural Light
- Updated Kitchen
- 92 Sit/Stand Desks, Conference Room, Kitchen, Break Room Furniture

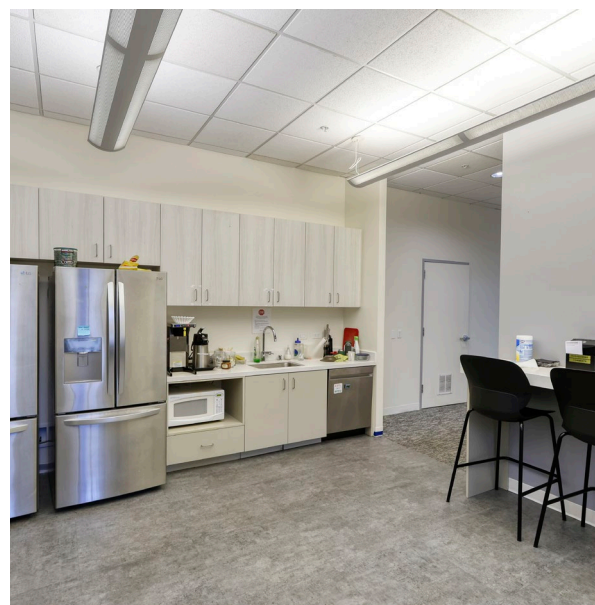
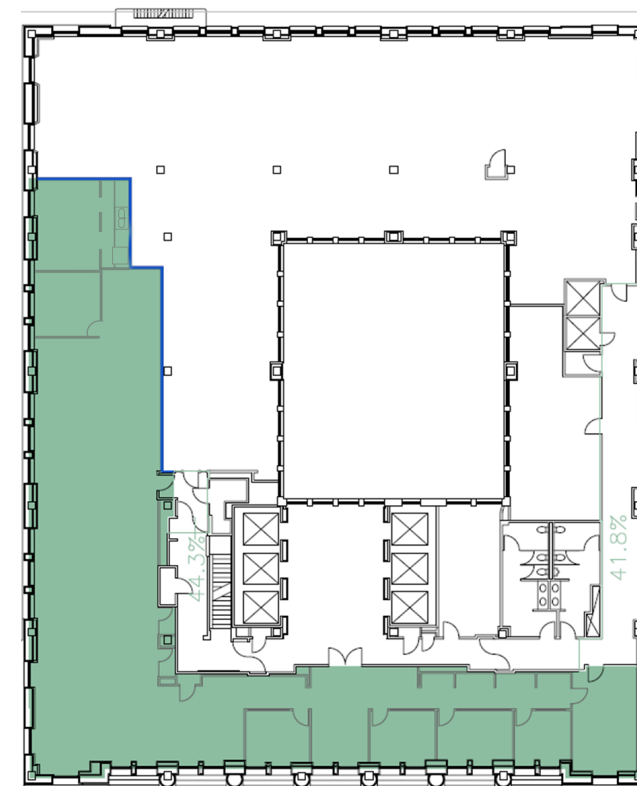
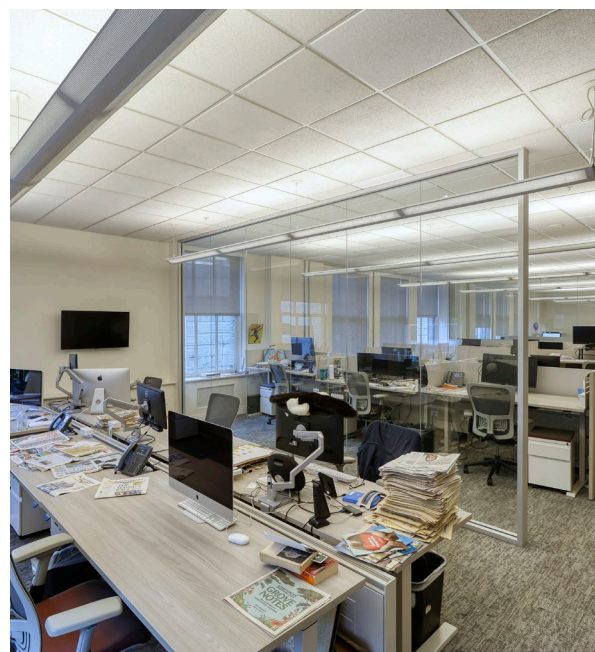
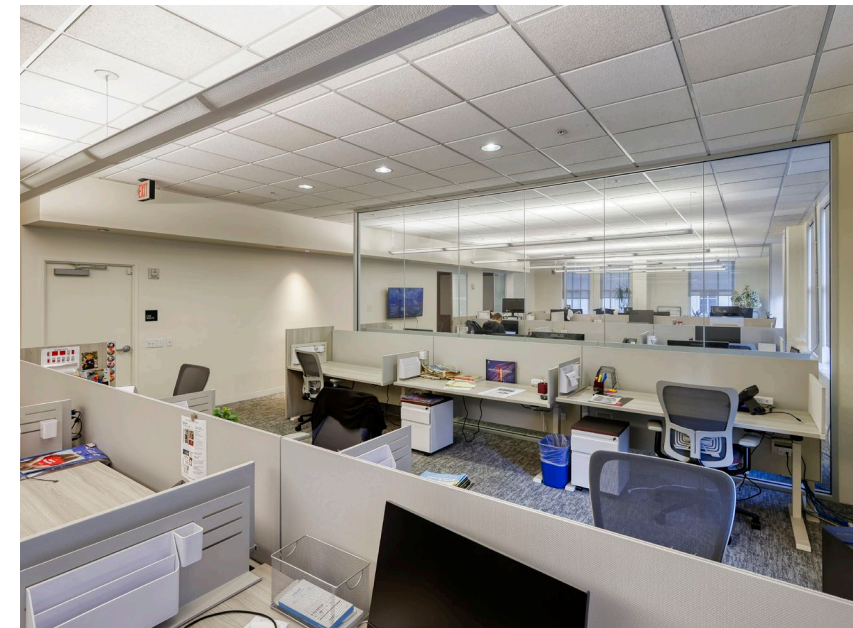




SUITE 1200 – 6,571 RSF

AVAILABLE FOR 30 DAYS

- Ready for Occupancy W/ 30 Days Notice
- 6 Private Office/Conference/Meeting Rooms
- 1 Large Conference Room
- 3 Drop In Call Rooms
- Ample Open Area
- Updated Kitchen
- Space Features Full Building Length California St Frontage W/ Great Natural Light
- Flexible Terms
- Space Can Be Furnished W/ 36 Sit/Stand Desks, Furniture for 6 Private Offices and Large Conference Room



Neighborhood Amenities



MODERN.

CLASSIC.



MERCHANT EXCHANGE BUILDING

465 CALIFORNIA STREET



MERCHANTS EXCHANGE CLUB



JULIA MORGAN
BALLROOM

OFFICE SPACE FOR LEASE

Leasing Opportunities

THOMAS MCKINLEY

HEAD OF REAL ESTATE

📞 207.837.3243 ✉️ thomas@clintonreilly.com 🌐 <https://clintreilly.com>

 **CLINT REILLY**
LANDMARK PROPERTIES