



Palisades One

**Class A Office near RTP**

**4,000-12,000 SF**

**5310 S Alston Ave Suite Durham NC**



**Class A Office – Private wooded setting near RTP**

### **Property Features**

- Building Signage
- Great Visibility
- First Floor, Multiple Entrances
- Wooded Patio
- Convenient to Raleigh, Durham, Chapel Hill, Apex
- Conference Rooms, Breakrooms and more
- Mixed Open Spaces
- Available Early 2024



For more information, please contact [Zack Fisher](mailto:zack@palisadesone.com) (919) 280-2901

[zack@palisadesone.com](mailto:zack@palisadesone.com)

The information contained in this document is proprietary to Palisades One and shall be used solely for the purposes of evaluating this proposal. All such documentation and information remains the property of Palisades One and shall be kept confidential. Reproduction of any part of this document is authorized only to the extent necessary for its evaluation. It is not to be shown to any third party without the prior written authorization of Palisades One. All information contained herein is from sources deemed reliable; however, no representation or warranty is made as to the accuracy thereof.





Palisades One

# Class A Office near RTP

5310 S Alston Ave Suite 210

Durham NC



For more information, please contact [Zack Fisher](mailto:zack@palisadesone.com) (919) 280-2901

[zack@palisadesone.com](mailto:zack@palisadesone.com)

The information contained in this document is proprietary to Palisades One and shall be used solely for the purposes of evaluating this proposal. All such documentation and information remains the property of Palisades One and shall be kept confidential. Reproduction of any part of this document is authorized only to the extent necessary for its evaluation. It is not to be shown to any third party without the prior written authorization of Palisades One. All information contained herein is from sources deemed reliable; however, no representation or warranty is made as to the accuracy thereof.





Palisades One

# Class A Office near RTP

5310 S Alston Ave Suite 210

Durham NC



For more information, please contact [Zack Fisher](tel:9192802901) (919) 280-2901

[zack@palisadesone.com](mailto:zack@palisadesone.com)

The information contained in this document is proprietary to Palisades One and shall be used solely for the purposes of evaluating this proposal. All such documentation and information remains the property of Palisades One and shall be kept confidential. Reproduction of any part of this document is authorized only to the extent necessary for its evaluation. It is not to be shown to any third party without the prior written authorization of Palisades One. All information contained herein is from sources deemed reliable; however, no representation or warranty is made as to the accuracy thereof.





Palisades One

## Class A Office near RTP

5310 S Alston Ave Suite 210

Durham NC



For more information, please contact [Zack Fisher](mailto:zack@palisadesone.com) (919) 280-2901

[zack@palisadesone.com](mailto:zack@palisadesone.com)

The information contained in this document is proprietary to Palisades One and shall be used solely for the purposes of evaluating this proposal. All such documentation and information remains the property of Palisades One and shall be kept confidential. Reproduction of any part of this document is authorized only to the extent necessary for its evaluation. It is not to be shown to any third party without the prior written authorization of Palisades One. All information contained herein is from sources deemed reliable; however, no representation or warranty is made as to the accuracy thereof.

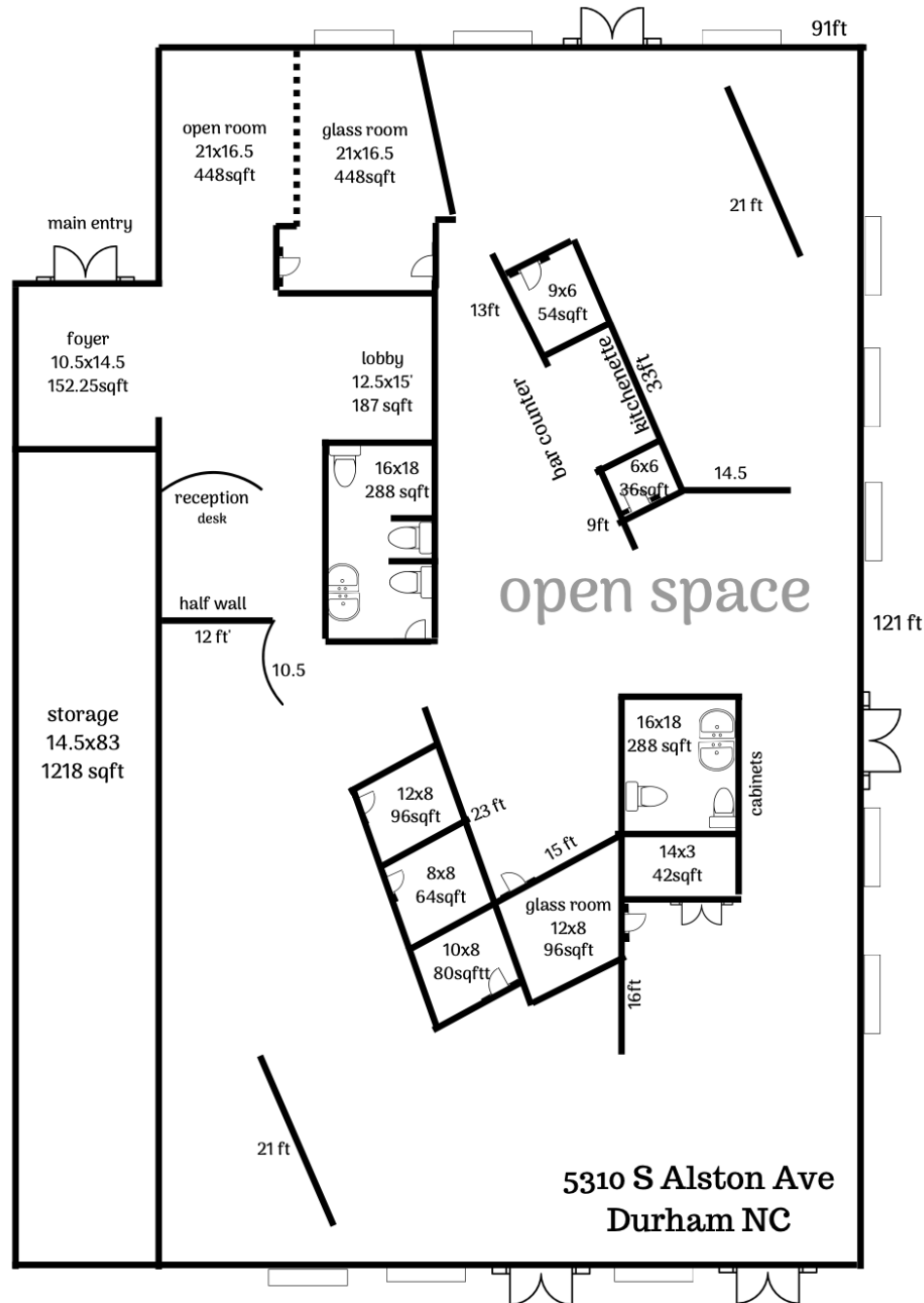


Palisades One

# Class A Office near RTP

5310 S Alston Ave Suite 210

Durham NC



Not to scale – measurements are approximate

Floorplan - ~12,306SF

For more information, please contact [Zack Fisher](mailto:zack@palisadesone.com) (919) 280-2901

[zack@palisadesone.com](mailto:zack@palisadesone.com)

The information contained in this document is proprietary to Palisades One and shall be used solely for the purposes of evaluating this proposal. All such documentation and information remains the property of Palisades One and shall be kept confidential. Reproduction of any part of this document is authorized only to the extent necessary for its evaluation. It is not to be shown to any third party without the prior written authorization of Palisades One. All information contained herein is from sources deemed reliable; however, no representation or warranty is made as to the accuracy thereof.