

BAYSIDE REALTY PARTNERS PRESENTS

Fountaingrove Medical Building

3536 Mendocino Avenue, Santa Rosa, California

±22,000 SF Available for Health System or Medical Clinic



TRASK LEONARD
President and CEO
650.533.2591
tleonard@baysiderp.com
DRE#01152101



CAROLINE DOYLE
Senior Vice President
650.722.1495
cdoyle@baysiderp.com
DRE#01906397

Fountaingrove Medical Building

3536 Mendocino Avenue, Santa Rosa, California

LOCATION

- Central Santa Rosa location near walkable retail amenities, hospital campuses and major highways
- Immediate access to US-101, SR-12 and public transportation
- Proximity to three regional hospitals including:
 - Kaiser Permanente Santa Rosa Medical Center (*across street*)
 - Sutter Health Santa Rosa Regional Hospital (*< 3 miles*)
 - Santa Rosa Memorial Hospital (*< 5 miles*)

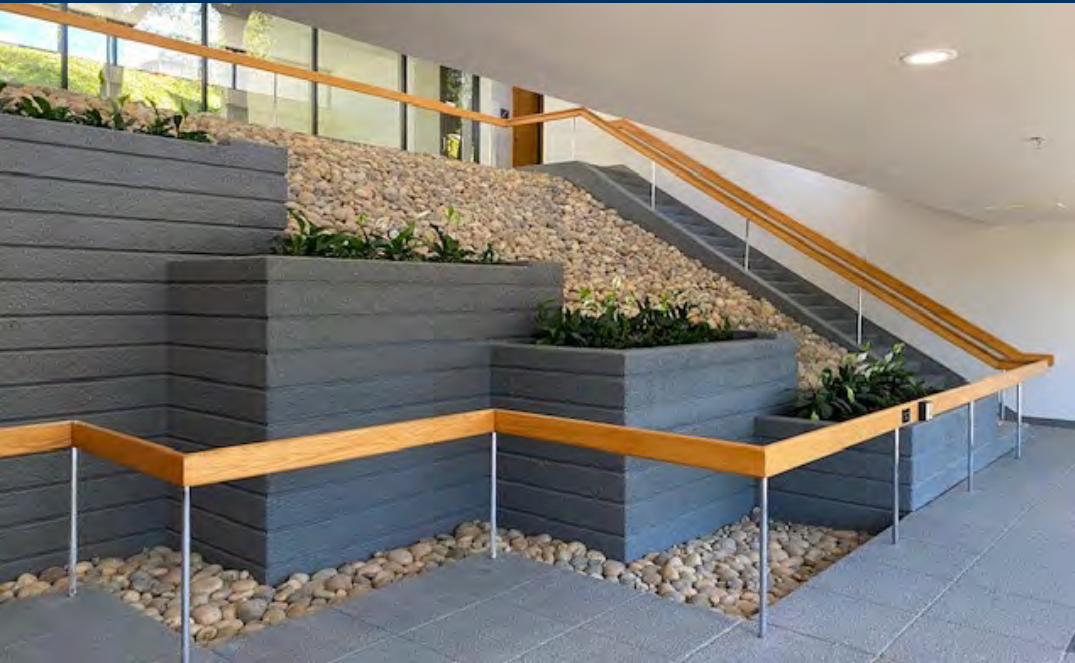


BUILDING

- Class A, premiere medical office building in Santa Rosa market
- Strong and diversified mix of medical practice tenants from primary care and internal medicine to ophthalmology and cardiology
- Greatest MOB parking ratio with abundant spaces at more than 5/1,000 SF
- Spacious lobbies, common areas and outdoor deck for dining
- On-site lab services (LabCorp)

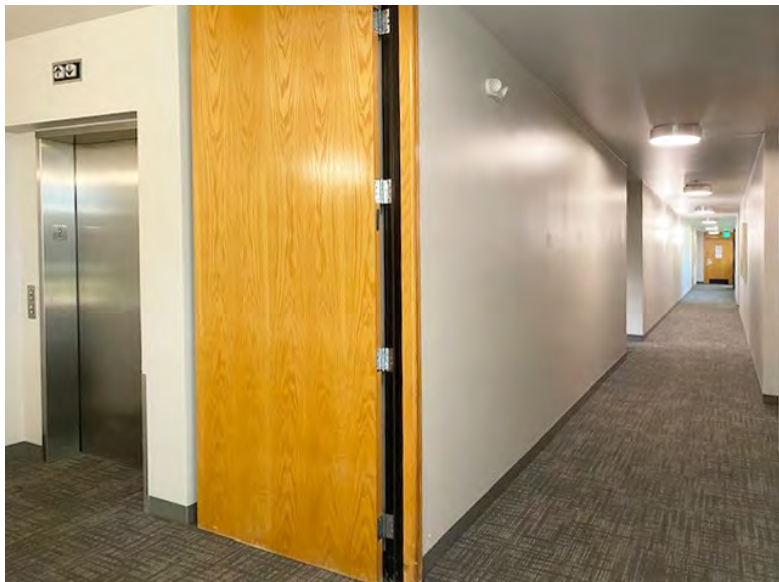
Fountaingrove Medical Building

3536 Mendocino Avenue, Santa Rosa, California



Fountaingrove Medical Building

3536 Mendocino Avenue, Santa Rosa, California



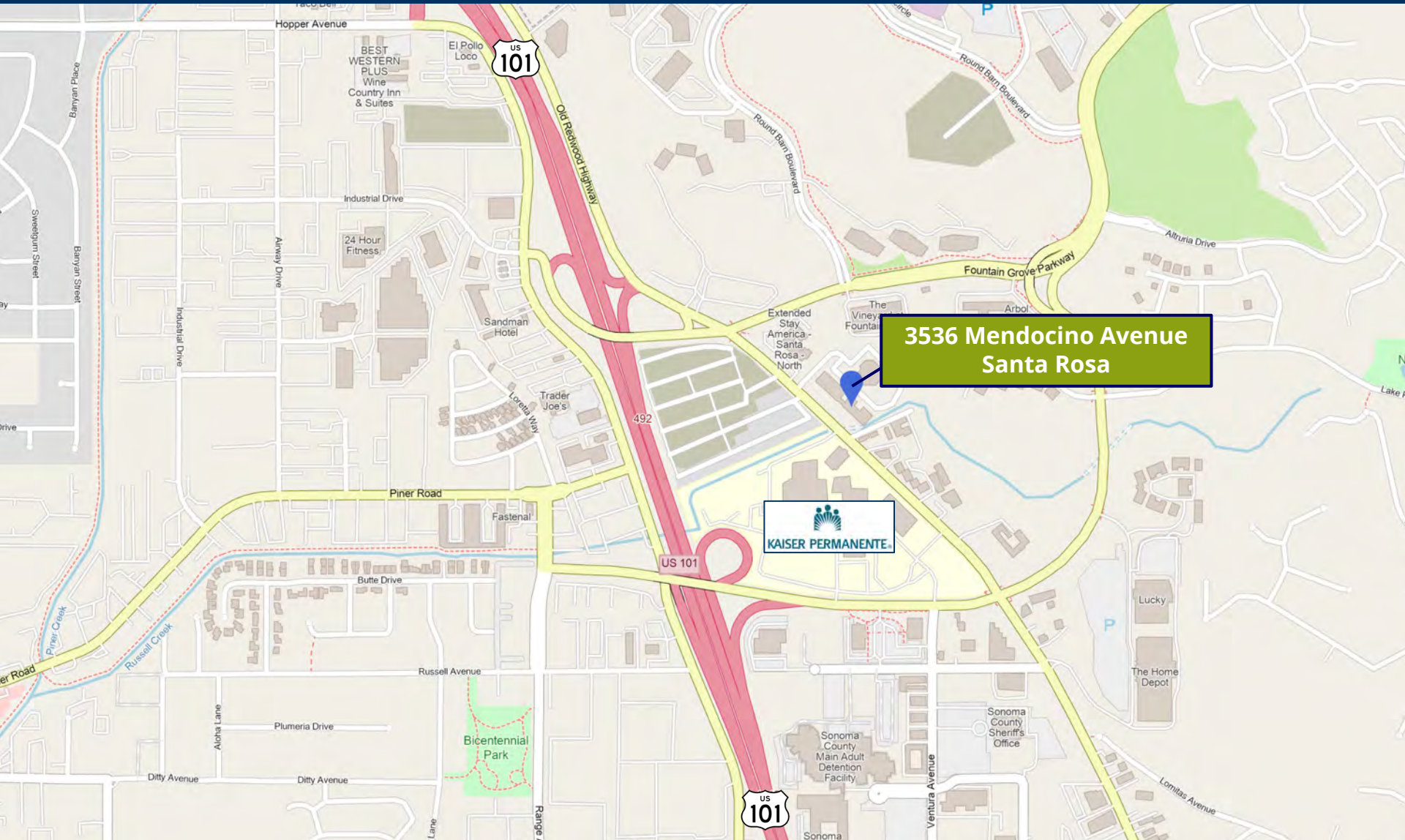
Fountaingrove Medical Building

3536 Mendocino Avenue, Santa Rosa, California



Fountaingrove Medical Building

3536 Mendocino Avenue, Santa Rosa, California

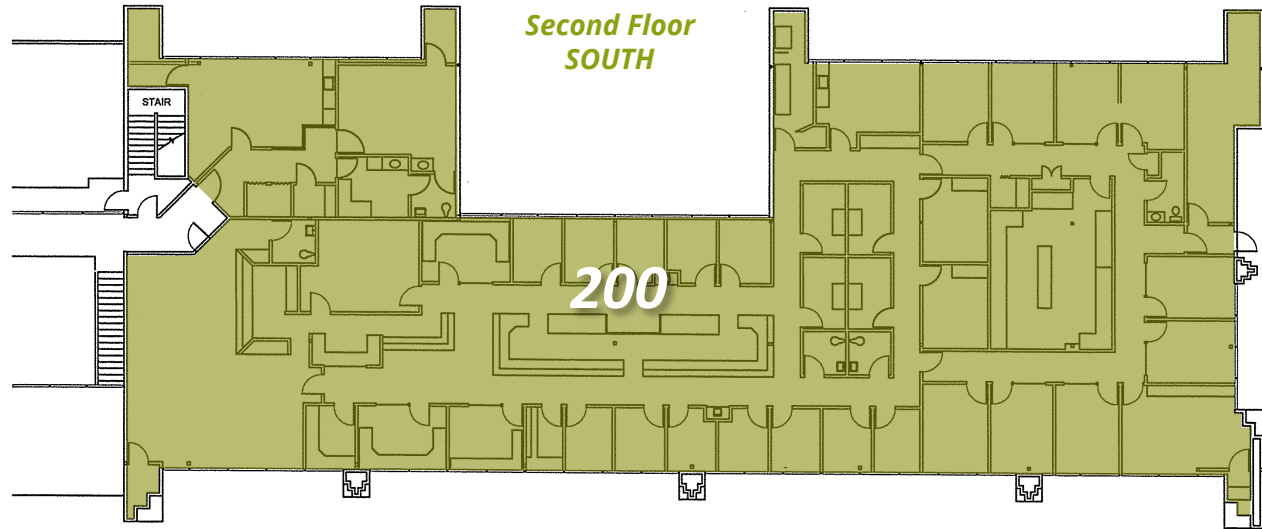


Fountaingrove Medical Building

3536 Mendocino Avenue, Santa Rosa, California

SECOND FLOOR —

Suite 200 **10,607 RSF**
30+ office/exam rooms,
reception/waiting area,
conference room, 5 restrooms

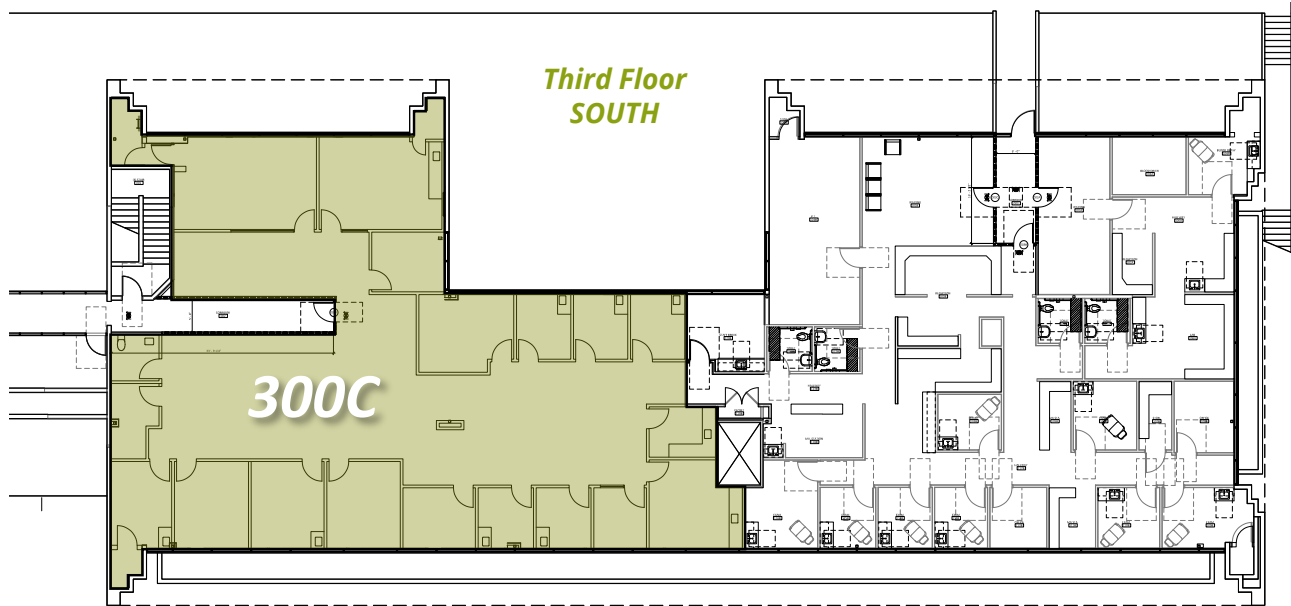


Fountaingrove Medical Building

3536 Mendocino Avenue, Santa Rosa, California

THIRD FLOOR — ACTUAL

Suite 300C 5,269 RSF
16 office/exam rooms,
1 restroom



Fountaingrove Medical Building

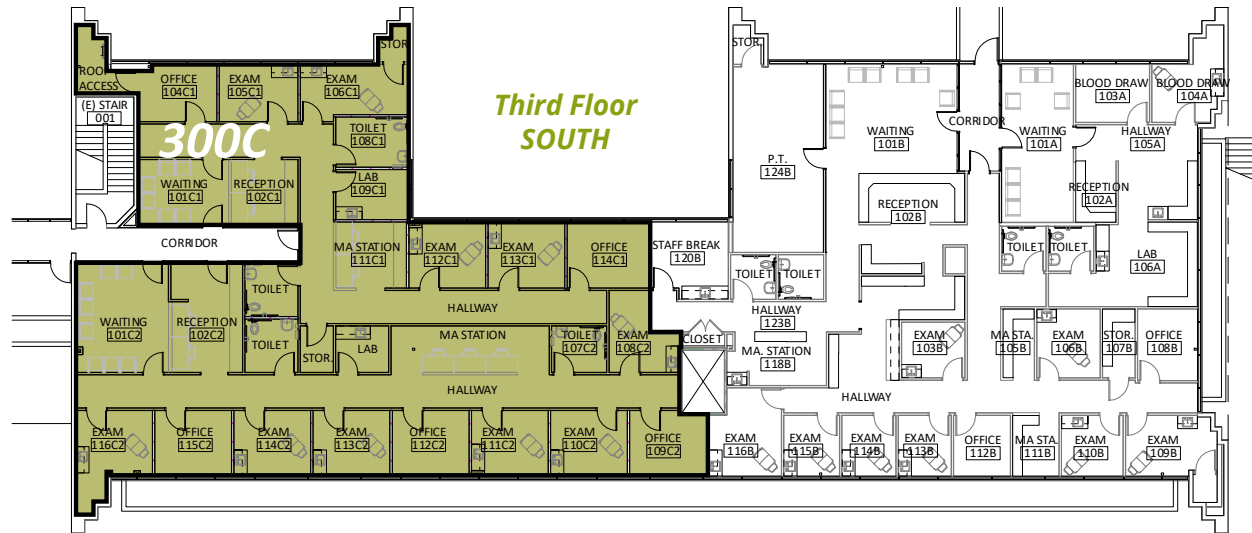
3536 Mendocino Avenue, Santa Rosa, California

THIRD FLOOR— CONCEPTUAL PLANS

SINGLE-TENANT OPTION

Suite 300C 5,269 RSF

15 office/exam rooms,
4 restrooms



TWO-TENANT OPTION

Suite 300C-1 ~2,349 RSF

6 exam/offices, 2 restrooms,
waiting, reception, lab

Suite 300C-2 ~2,920 RSF

9 exam/offices, waiting,
reception, 2 restrooms



Meet Your Expert Team



TRASK LEONARD

President and CEO

650.533.2591

tleonard@baysiderp.com

DRE#01152101



CAROLINE DOYLE

Senior Vice President

650.722.1495

cdoyle@baysiderp.com

DRE#01906397

DOMINANT. EXPERT. INFLUENTIAL.

BAYSIDE REALTY PARTNERS

The preeminent provider of management, leasing, construction management and accounting services for healthcare properties.



MARKET LEADER

- Leasing & Property Management
- Investment Sales
- Tenant Representation
- Construction Management
- Property Repositioning



INFLUENTIAL NETWORK

- Institutional Investors
- Healthcare Systems and Healthcare Districts
- Physicians & Districts
- Private Investors



DOMINANT FOOTPRINT

- 2 million SF leased & managed
 - 50+ MOB portfolio
 - 10,000-240,000 SF
 - 500,000 SF portfolio
- San Francisco's largest MOBs
- 950+ leases executed
- 500+ medical and dental tenants

DOMINANT. EXPERT. INFLUENTIAL.