

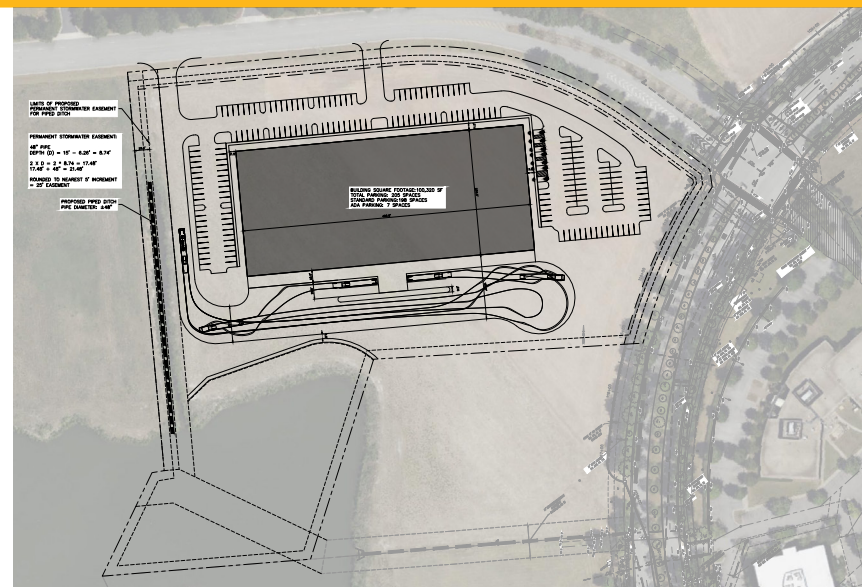
FOR LEASE HIGH BAY WAREHOUSE

**Corporate Landing Pkwy
Virginia Beach, VA**



ABOUT PROPERTY

- ## ABOUT PROPERTY
- 100,320 SF (Subdividable)
 - Office - Built - to-Suit
 - ESFR Fire Suppression
 - 28' Clear Ceiling Height
 - 4 Dock Doors with Dock Levelers
 - 3 Grade-Level Doors
 - 3,000 amps, 480 volt, 3-phase electrical service
 - Building Dimension - 209' x 480'
 - 30' x 69' Column Spacing
 - 205 parking spaces
 - 6" Reinforced Concrete Slab
 - Foreign Trade Zone Eligibility
 - Dominion Energy Certified Data Center Park
 - Conditional I-L (Light Industrial) Zoning
 - Rental Rate: Call Agent



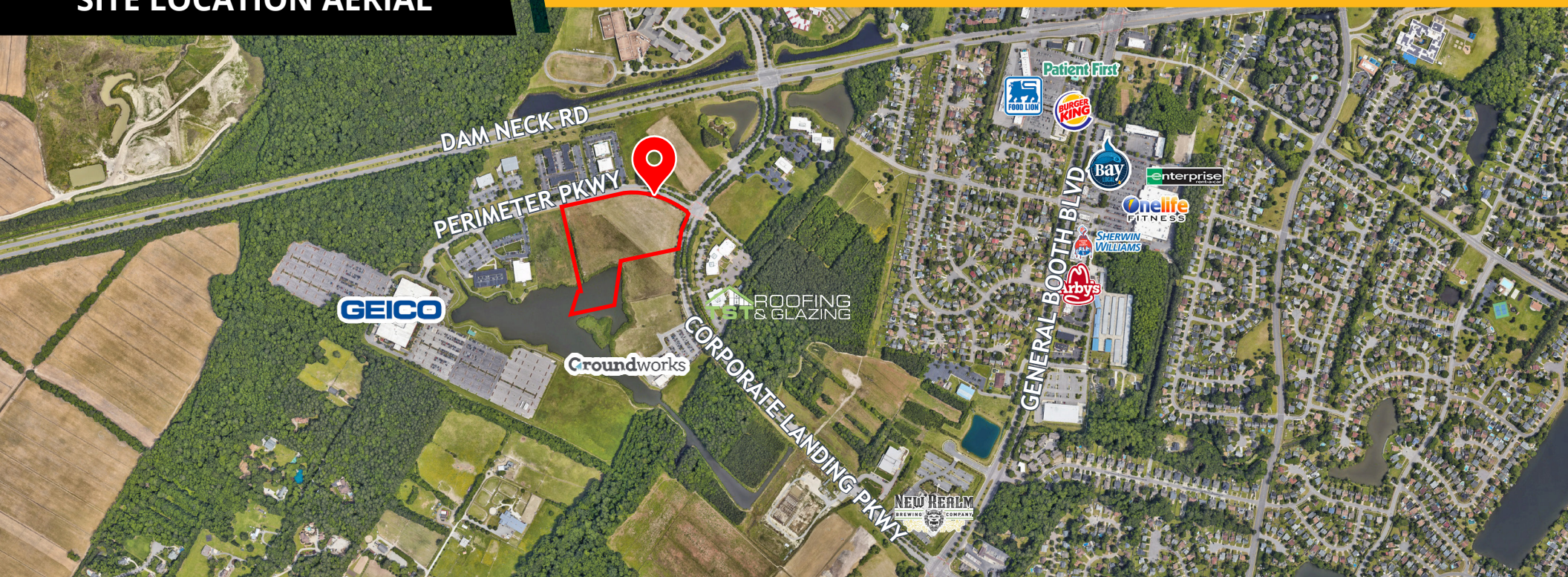
For more information:
BOBBY BEASLEY, III, SIOR
 757.640.8241
BobbyBeasley3@HarveyLindsay.com

HARVEY LINDSAY
COMMERCIAL REAL ESTATE

www.harveylindsay.com

SITE LOCATION AERIAL

HIGH BAY WAREHOUSE | Corporate Landing Pkwy, Virginia Beach, VA

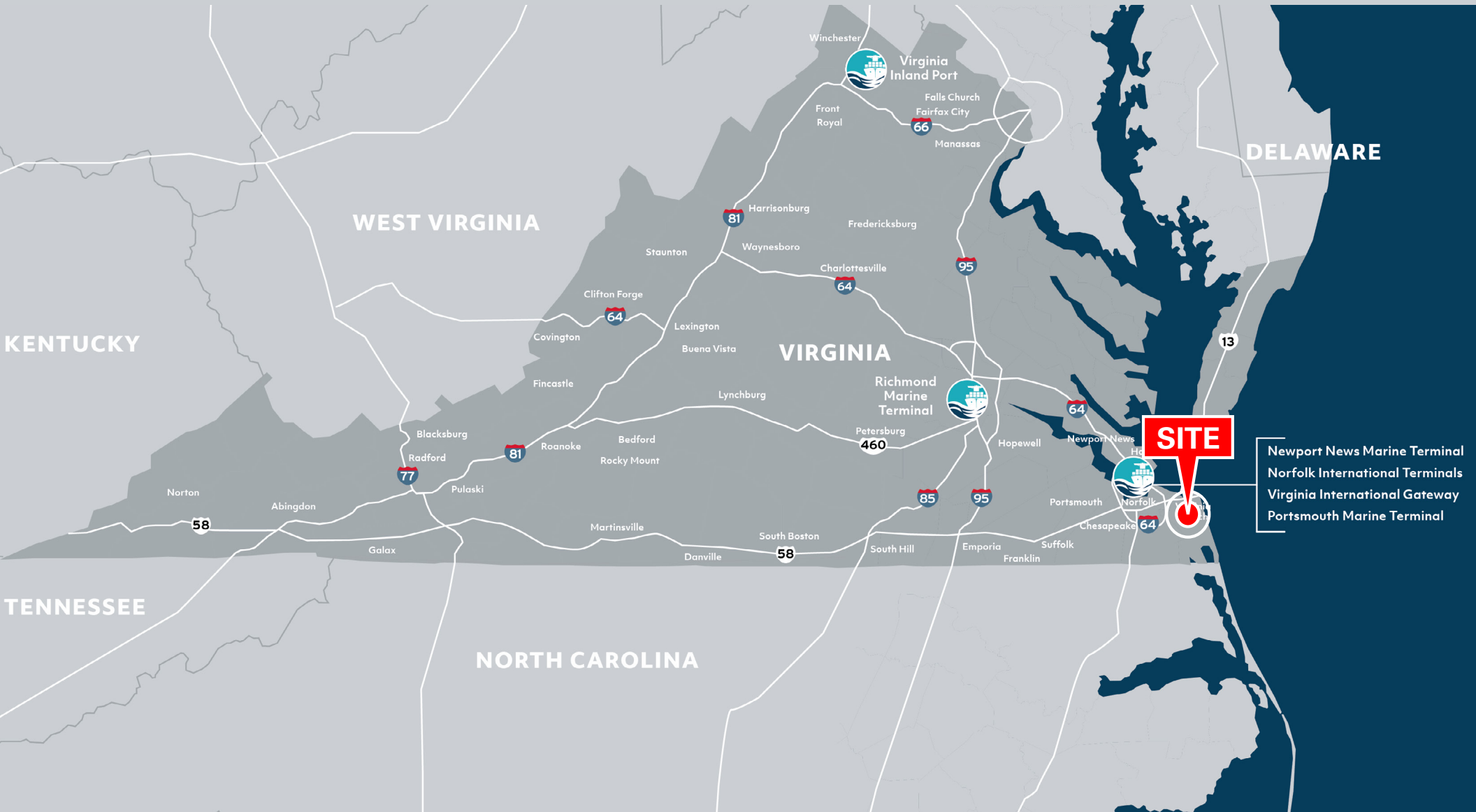


The information contained herein has been obtained from sources believed to be reliable but is not warranted. We cannot be responsible for errors, omissions, withdrawal, or prior lease or sale.

HARVEY LINDSAY
COMMERCIAL REAL ESTATE

DISTANCE TO:

| | |
|--------------------------------|--|
| NORFOLK INTERNATIONAL TERMINAL | 26.0 miles 36 minutes from subject |
| VIRGINIA INTERNATIONAL GATEWAY | 28.0 miles 42 minutes from subject |
| NEWPORT NEWS MARINE TERMINAL | 26.4 miles 43 minutes from subject |
| PORTSMOUTH MARINE TERMINAL | 26.8 miles 45 minutes from subject |
| RICHMOND MARINE TERMINAL | 113.9 miles 130 minutes from subject |





For more information:

BOBBY BEASLEY, III, SIOR

757.640.8241

BobbyBeasley3@HarveyLindsay.com

825 Diligence Drive • Suite 114
Newport News, Virginia 23666
757-873-2020
www.HarveyLindsay.com

HARVEY LINDSAY
COMMERCIAL REAL ESTATE