

FOR LEASE - COMMERCIAL PROPERTY  
QUALICUM CENTRE



Commercial Opportunity- Qualicum Centre

## 2934 Baseline Rd

### Up to 16,451sf office space available

The campus is close to Major transportation routes, amenities, and the Hospital.

Originally constructed in 1988 & 1989, these BOMA Best Certified “Class A” buildings totaling 224,151 sq ft. GFA (gross floor area), have recently undergone extensive modernization & upgrades.

Featuring impressive indoor and outdoor communal amenity spaces, and complete with a 5-level parking tower, Qualicum Centre is a sought-after suburban office campus that houses several esteemed long-term tenants.

Unit 200A at 1,500sq.ft., Unit 204 at 2,535 sq.ft, Unit 400 at 6,132 sq.ft and Unit 500 at 16,451 sq.ft. are all available for immediate possession. Unit 303 at 3,902 sq.ft will be available October 1, 2026 & Unit 102 at 5,340sf will be available as of July 1, 2026.

Leasing Team  
(613) 230-2100  
[commercialleasing@regionalgroup.com](mailto:commercialleasing@regionalgroup.com)

Regional Group  
1737 Woodward Drive, 2<sup>nd</sup>  
Floor  
Ottawa, ON  
K2C 0P9

(613) 230-2100

[commercialleasing@regionalgroup.com](mailto:commercialleasing@regionalgroup.com)



## Property Highlights

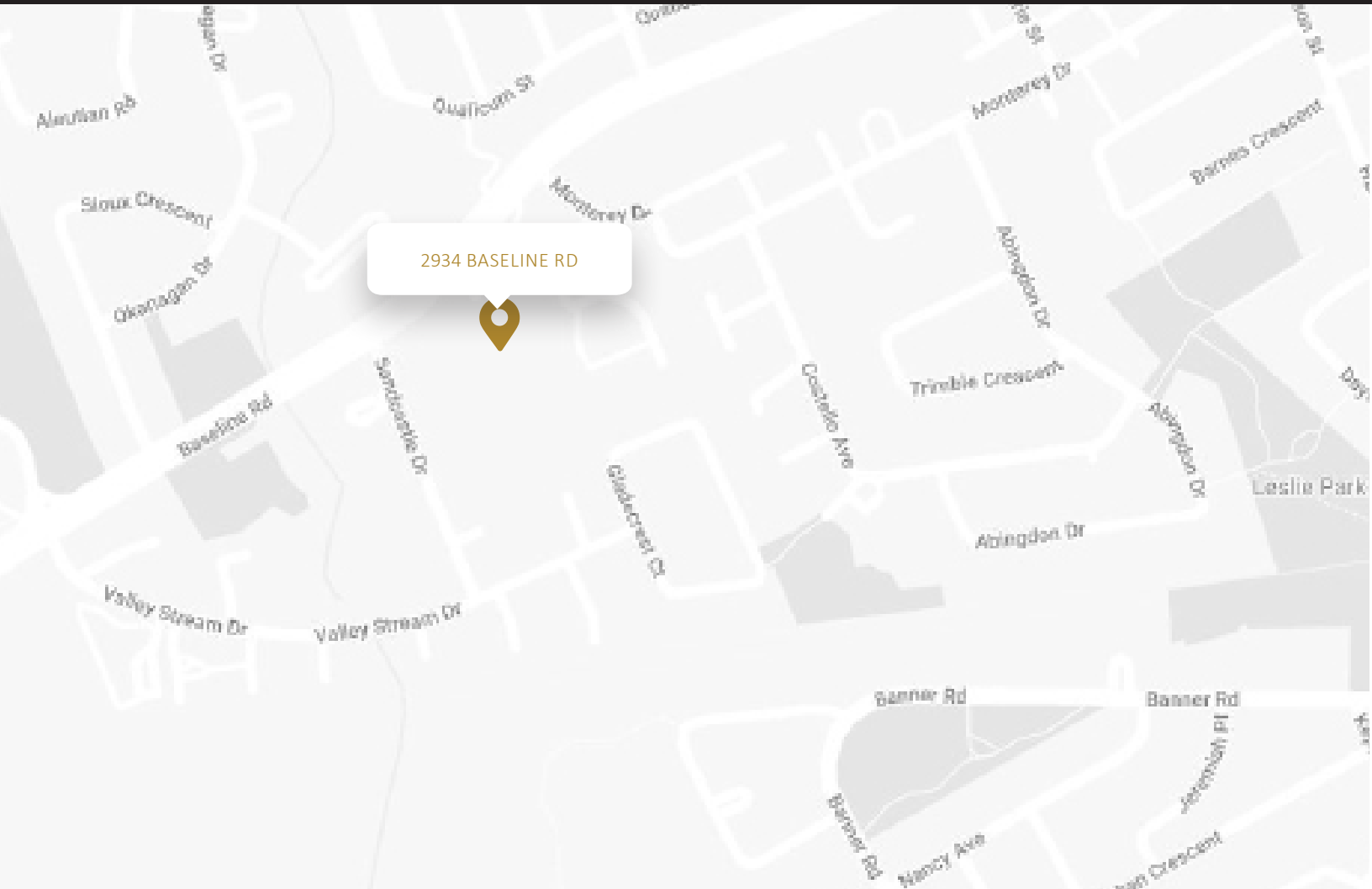
- Indoor and outdoor communal amenity spaces
- Extensive modernization & upgrades
- 5 level parking tower, with 524 parking stalls
- Surface parking of 375 stalls
- Professionally managed building with onsite property manager
- Close to major transportation routes



## Availability & Rates

Suite	Area (sf)	Net Rent (PSF)	Additional Rent (PSF)	Availability
Unit 102	5,340	\$18.00	\$14.88	October 1, 2026
Unit 200A	1,500	\$18.00	\$14.88	Immediate
Unit 204	2,535	\$18.00	\$14.88	TBD
Unit 303	3,902	\$18.00	\$14.88	Deal pending
Unit 400	6,132	\$18.00	\$14.88	Immediate

TI Allowance – Negotiable

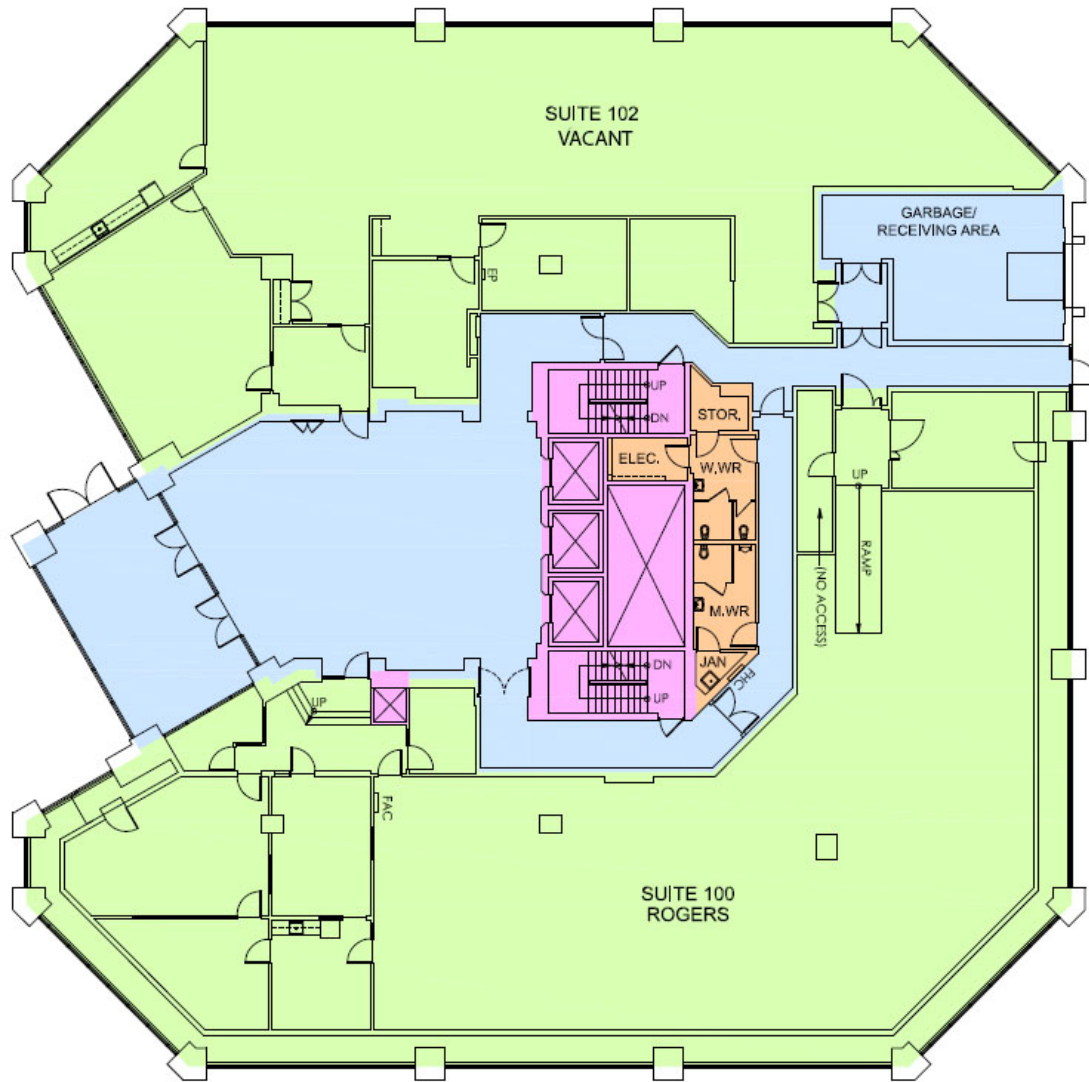


## Property Specifications

Construction	Concrete and steel framed with exterior granite-clad panels and metal siding
Year Built	1989
Loading facilities	No
HVAC	Rooftop Unit- Air Handling units with electric heating & hydrolic colling coils
Electricity	347/600V, three-phase, four-wire
Sprinklered	Yes
Elevator	2 per building + additional service elevator at 2934 Baseline
Parking Spots	5 level parking structure, with 524 stalls & 375 surface parking stalls
Seperately Metered	Yes

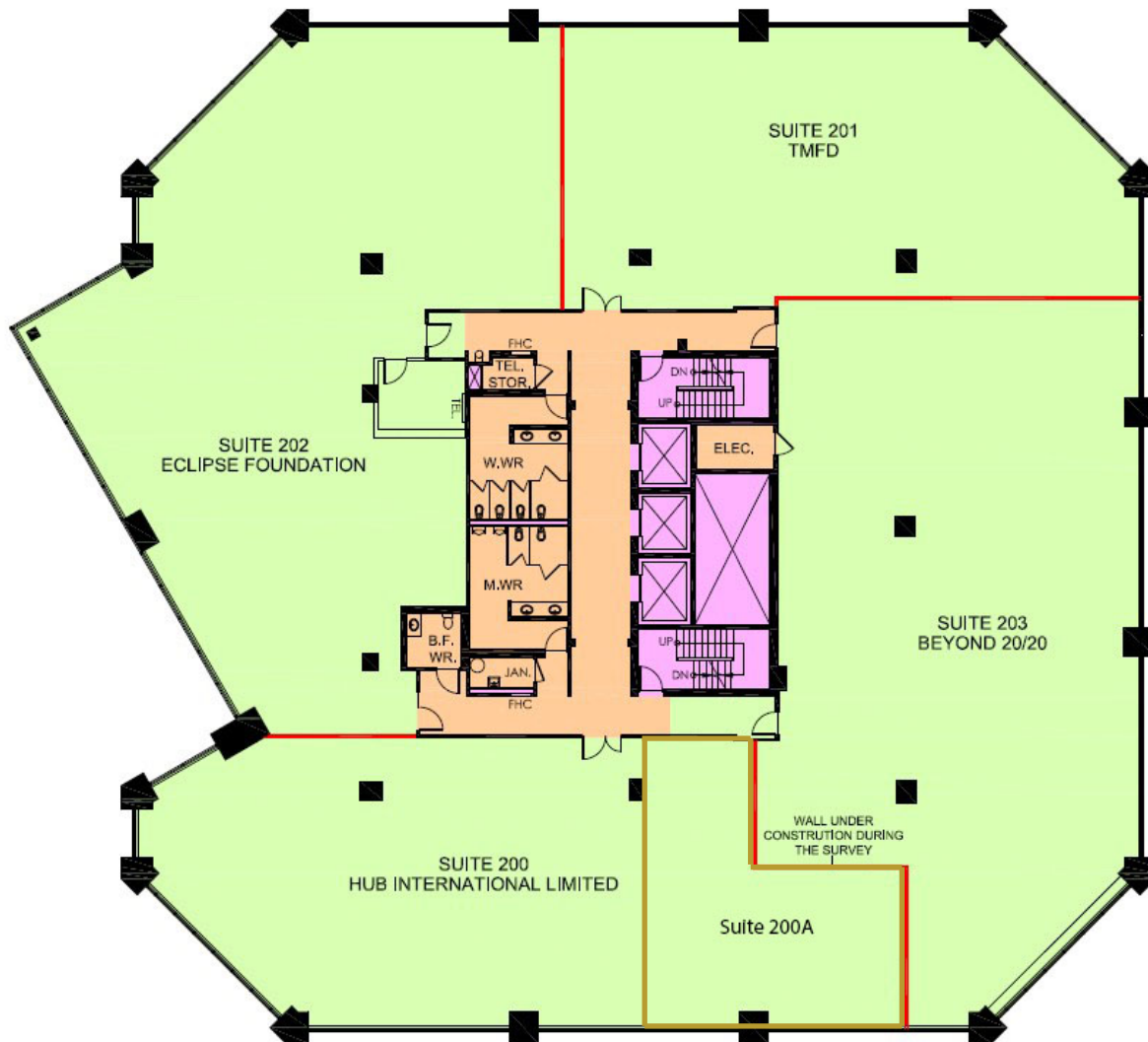
# Unit 102

5,340 sf



# Unit 200A

1,500 sf



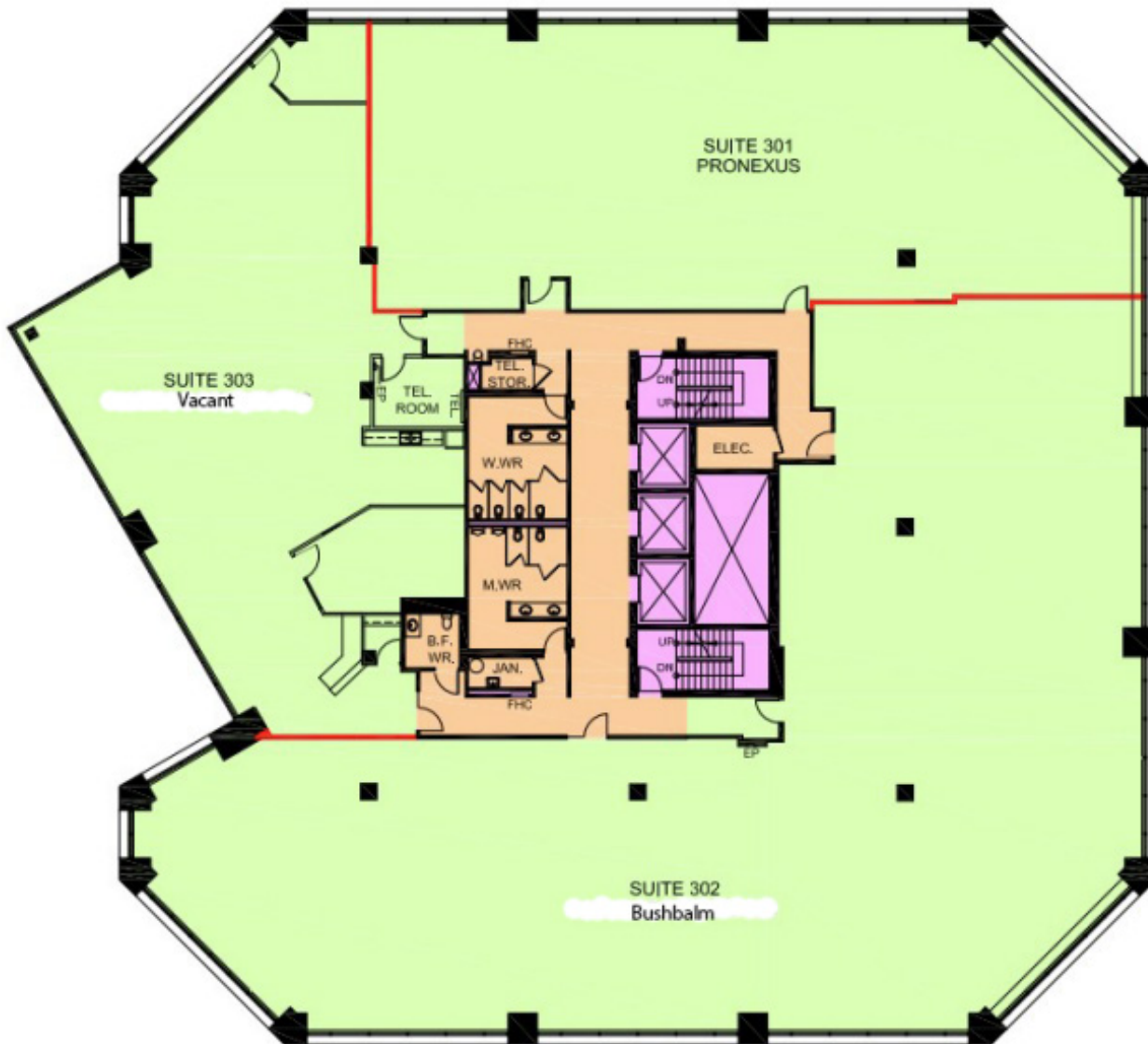
# Unit 204

2,535 sf



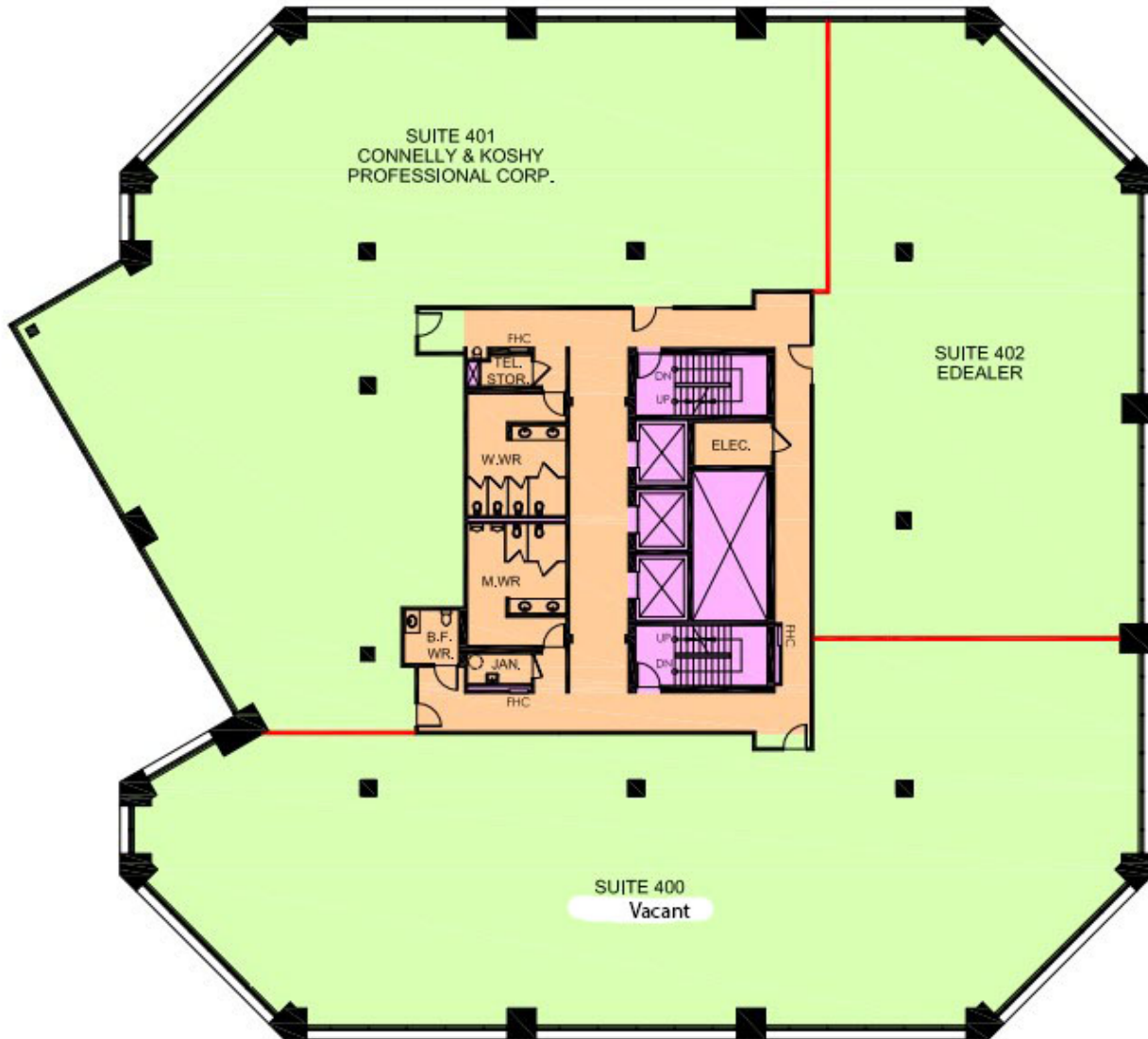
# Unit 303

3,902 sf



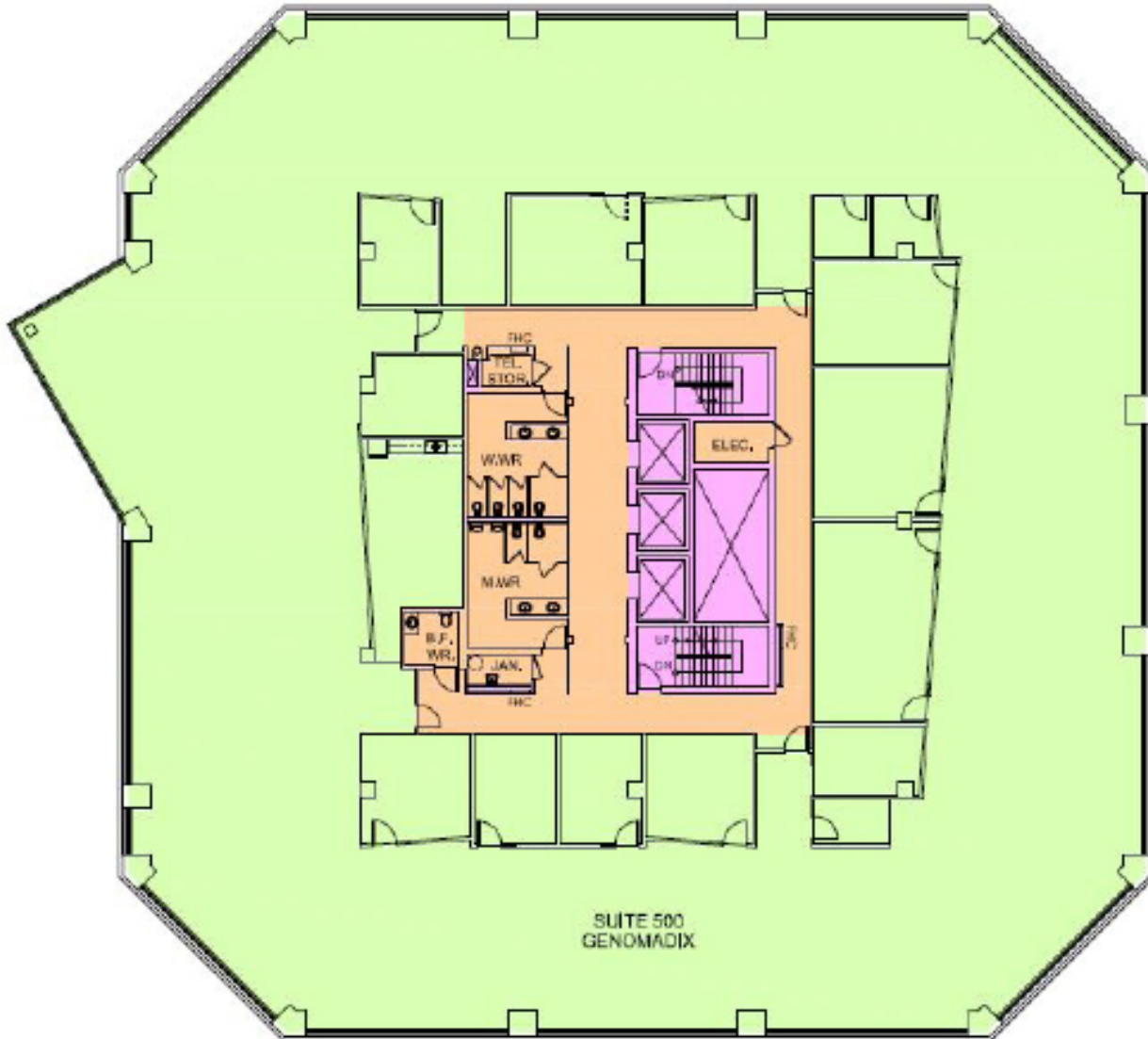
# Unit 400

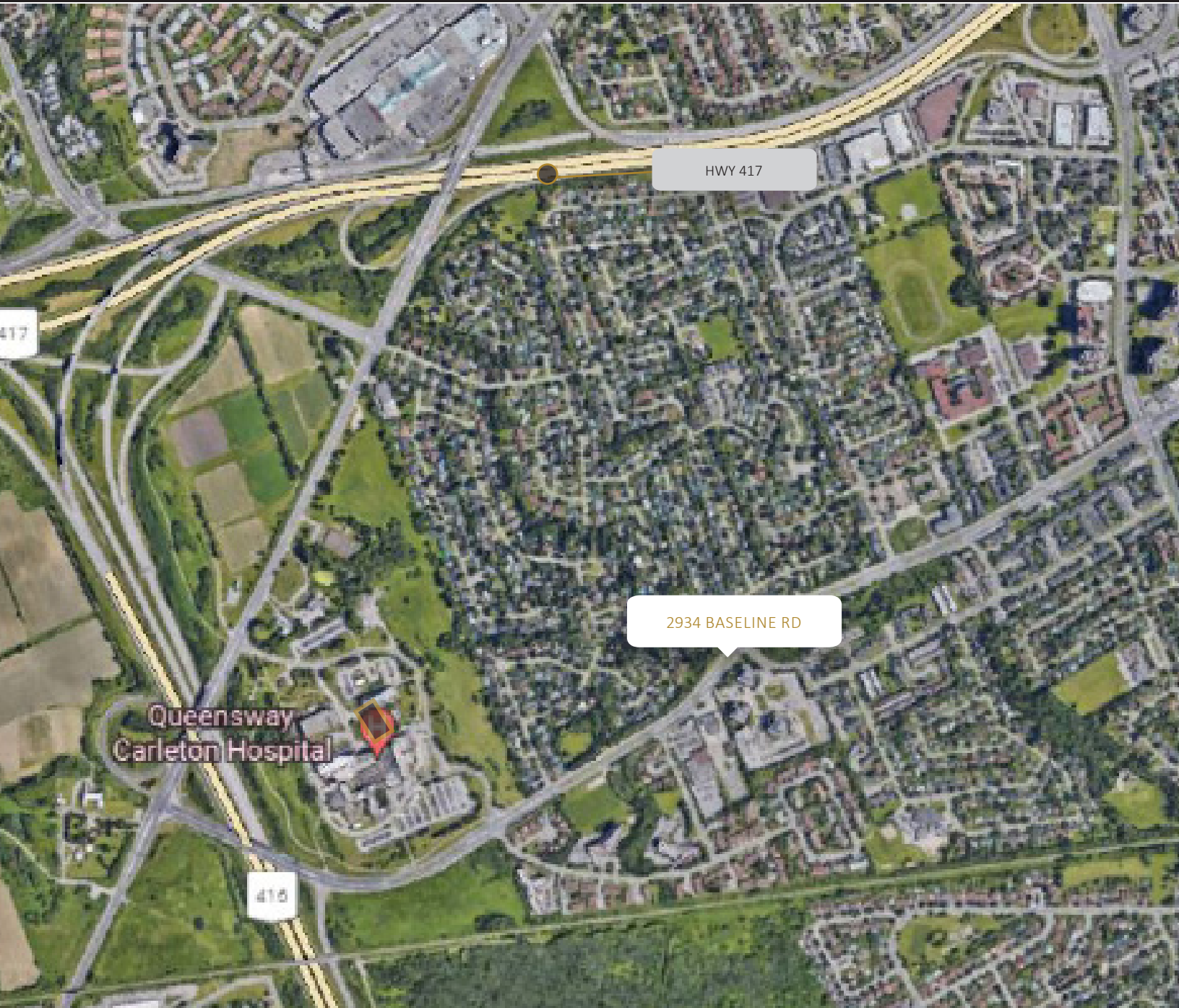
6,132 sf



# Unit 500

16,451sf





## Contact us

Bruce Barrett, Director, Leasing  
bbarrett@regionalgroup.com

613-219-7184

Regional Group  
1737 Woodward Drive, 2<sup>nd</sup> Floor  
Ottawa, ON  
K2C 0P9

(613) 230-2100  
commercialleasing@regionalgroup.com  
regionalgroup.com

The information herein contained has not been verified by The Regional Group of Companies Inc. (the 'Agent'). The Agent does not warrant in any manner, implied or otherwise, that the information herein contained is accurate. The Agent does not, and will not, accept or assume any liability for any consequence or result, negative or otherwise, arising from the reliance of the party receiving the information (the 'Recipient') on the information herein contained. It is the sole and exclusive responsibility of the Recipient to independently verify all information herein contained and perform all due diligence as reasonably required. The information herein contained is subject to change and / or alteration without prior notice, and the Agent hereby reserves the exclusive right to remove from the market said information and / or the Property / Space for Lease to which it pertains. The Regional Group of Companies Inc. is acting solely as an agent for its client, and is not acting in its personal or corporate capacity.

