



Land for sale or lease

7800 Harmony Drive, Bloomington, MN 55439

7800 Harmony Drive / Bloomington

Bloomington Land with I-494 frontage

Up to 4.5 acres available

Location

NWQ of I494 and Hwy 100 Bloomington

PID

16-116-21-22-0003

Description

Up to 4.5 acres on the west side of the 9.25 acre Schmitt Music Corporate Headquarters located at 7800 Harmony Dr., Bloomington, MN 55439

Traffic counts

I-494	169,838 VPD
Highway 100	36,743 VPD
78th Street	5,414 VPD

Property highlights & demographics



Premier freeway development opportunity



Excellent visibility to 150,000 VPD on I-494



Flexible PD (Planned Development) zoning



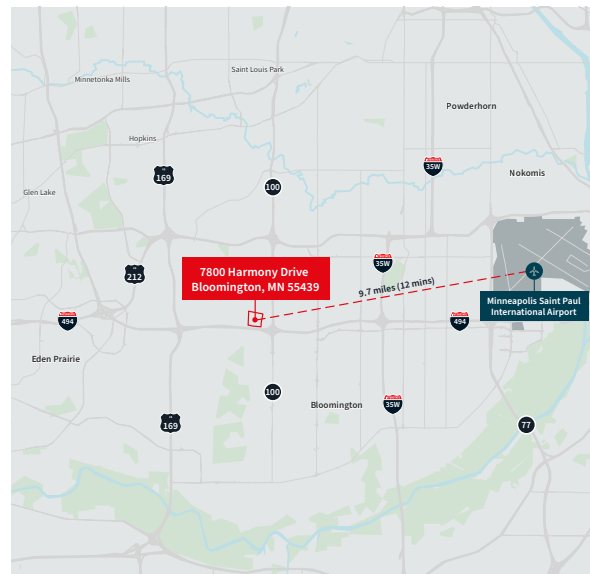
Surrounded by a variety of uses including retail, hospitality, office, multifamily and light industrial



I-494 and Hwy 100 is one of the most heavily trafficked areas of the Twin Cities



One of the last land development opportunities along the I-494 loop with prominent freeway visibility

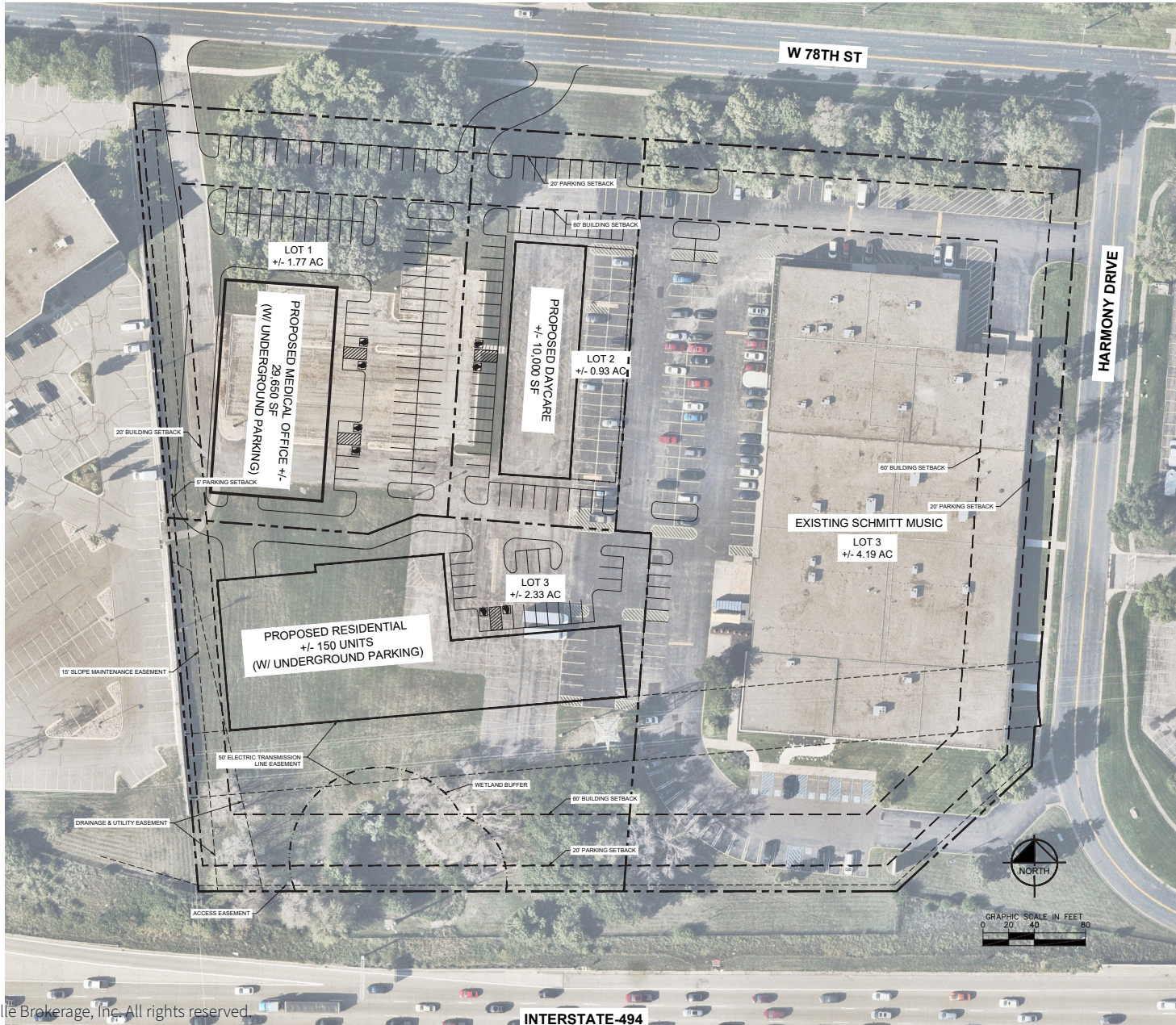


	1 mile	3 miles	5 miles
Population	8,025	73,595	243,773
Daytime Population	37,420	139,998	335,940
Median HH income	\$99,769	\$100,238	\$96,043

Aerial



Concept plan



Thank you

About JLL

For over 200 years, JLL (NYSE: JLL), a leading global commercial real estate and investment management company, has helped clients buy, build, occupy, manage and invest in a variety of commercial, industrial, hotel, residential and retail properties. A Fortune 500 company with annual revenue of \$20.9 billion and operations in over 80 countries around the world, our more than 103,000 employees bring the power of a global platform combined with local expertise. Driven by our purpose to shape the future of real estate for a better world, we help our clients, people and communities SEE A BRIGHTER WAYSM. JLL is the brand name, and a registered trademark, of Jones Lang LaSalle Incorporated. For further information, visit jll.com.

Sara Martin

Executive Vice President

sara.martin@jll.com

+1 612 209 8271

Ted Gonsior, CCIM

Executive Vice President

ted.gonsior@jll.com

+1 651 283 2553