



Colliers

Build-to-suit
Up to 15,000 SF

Century Business Park
7695 S 5th Ave, Pocatello, ID

Don Zebe
208 403 1973
don.zebe@colliers.com

Mike Zebe
208 705 6453
mike.zebe@colliers.com

Jared Zebe
208 709 7311
jared.zebe@colliers.com

Property Overview

Property Type	Warehouse/Office/Showroom BTS
Build to Suit	Up to 15,000 SF
Land Size	3.94 Acres

Demos

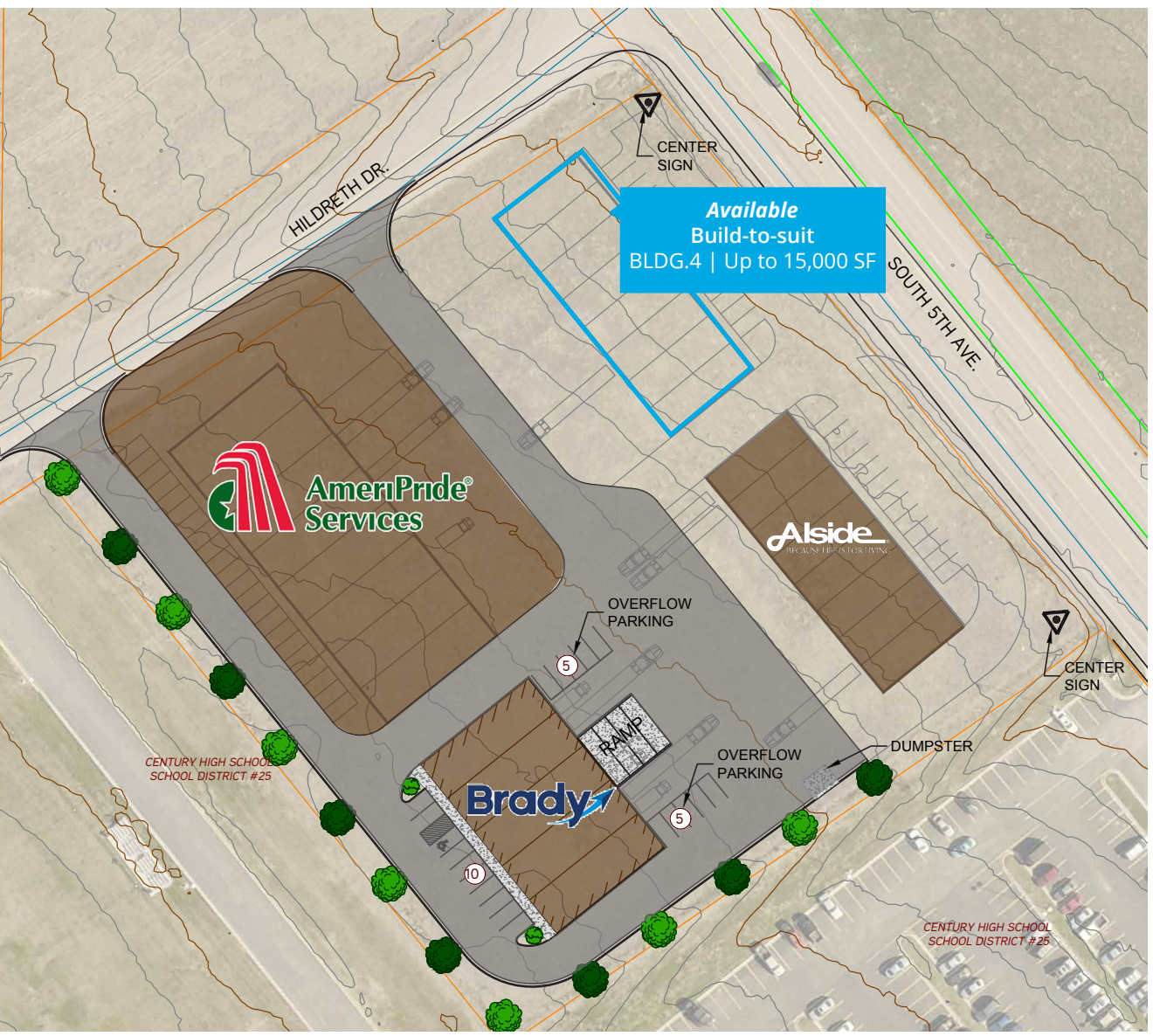
	1 Miles	5 Miles	10 Min Drive
Population	425	16,143	50,726
Avg. Income	\$80,665	\$71,219	\$62,813

Price: Contact Agent

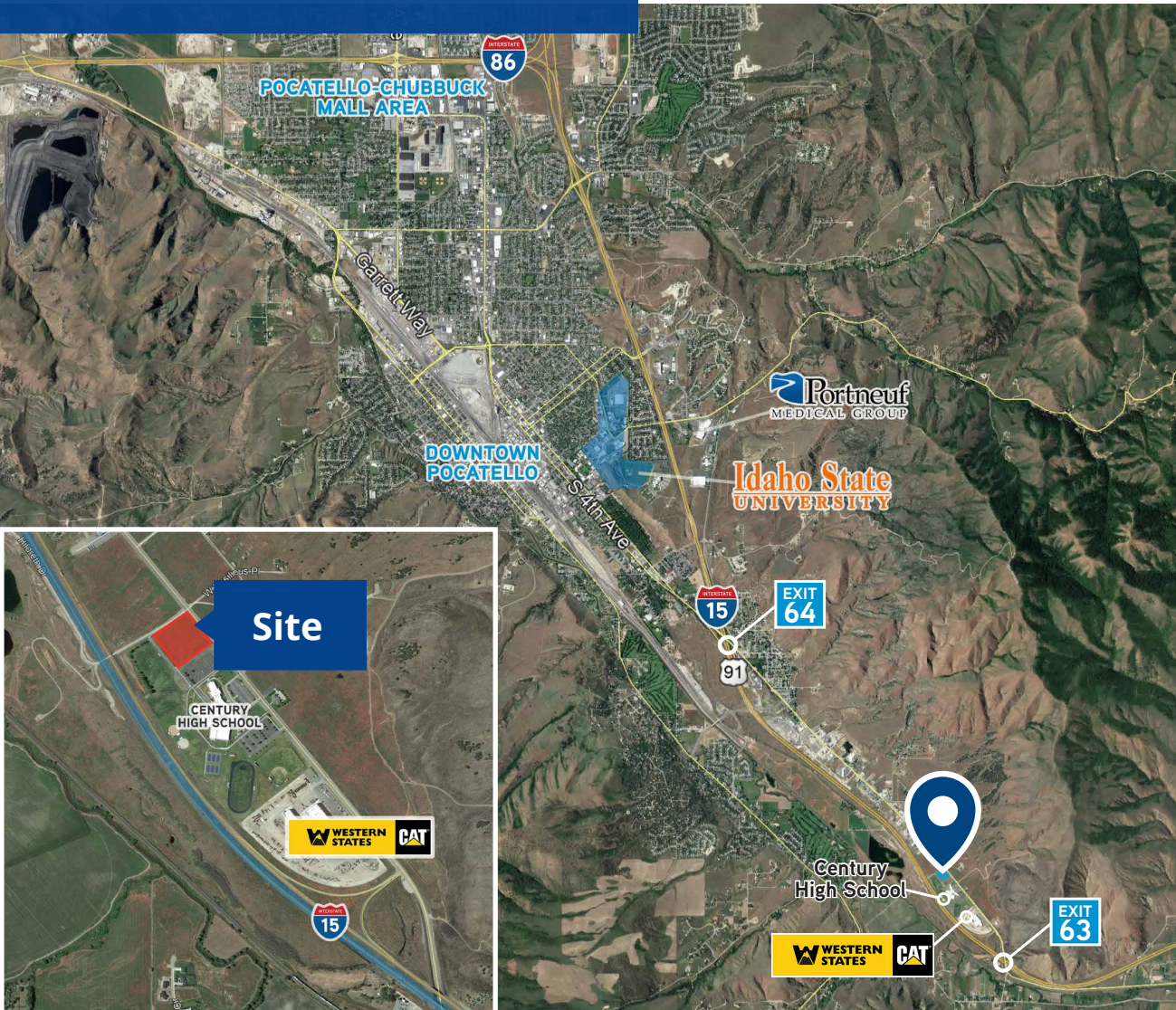
Key Highlights

- New development build-to-suit
- Excellent visibility from I-15 and S 5th Ave
- Modern facilities
- Offices, showrooms, flex, warehousing, distribution and light manufacturing welcome
- Dock-high and drive-in overhead doors
- Pads available build-to-suit
- Located between two I-15 Exits
- Contact agents for more details

Site Plan



Location



2043 E Center Street
Pocatello, Idaho 83201
208 951 2100
colliers.com/idaho

This document has been prepared by Colliers for advertising and general information only. Colliers makes no guarantees, representations or warranties of any kind, expressed or implied, regarding the information including, but not limited to, warranties of content, accuracy and reliability. Any interested party should undertake their own inquiries as to the accuracy of the information. Colliers excludes unequivocally all inferred or implied terms, conditions and warranties arising out of this document and excludes all liability for loss and damages arising there from. This publication is the copyrighted property of Colliers and/or its licensor(s). © 2024. All rights reserved. This communication is not intended to cause or induce breach of an existing listing agreement. Colliers Portneuf Valley, LLC.