



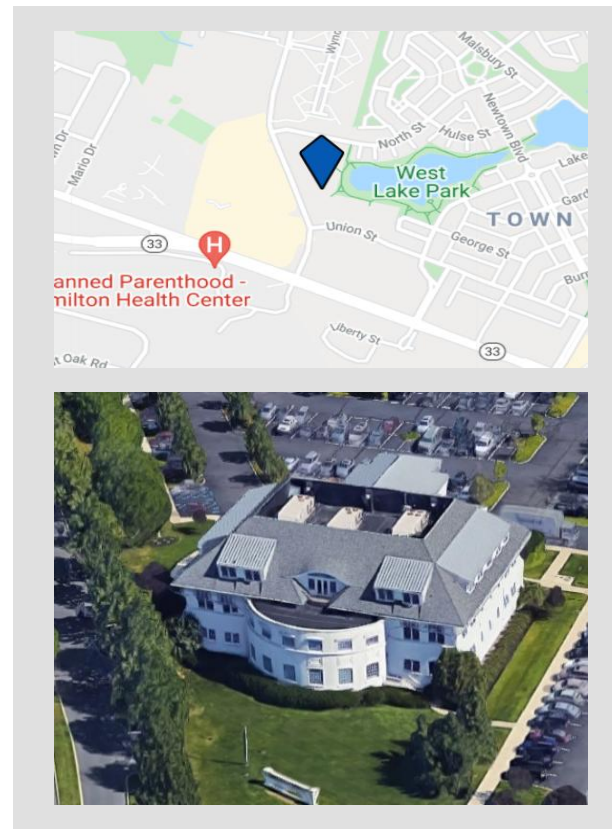
1 Washington Boulevard

Robbinsville, NJ 08691

- Available Space: 2,475 RSF
- Ideal Office/Medical building, 40,000 SF
- Lake views
- Ample parking, reserved parking Spaces
- Zoning: TC
- Located on Route 33, in Mercer County, walking distance to Washington Town Center, easy access to Route 130, I-95, New Jersey Turnpike Exits 7A and 8

Sale: \$275.00/SF

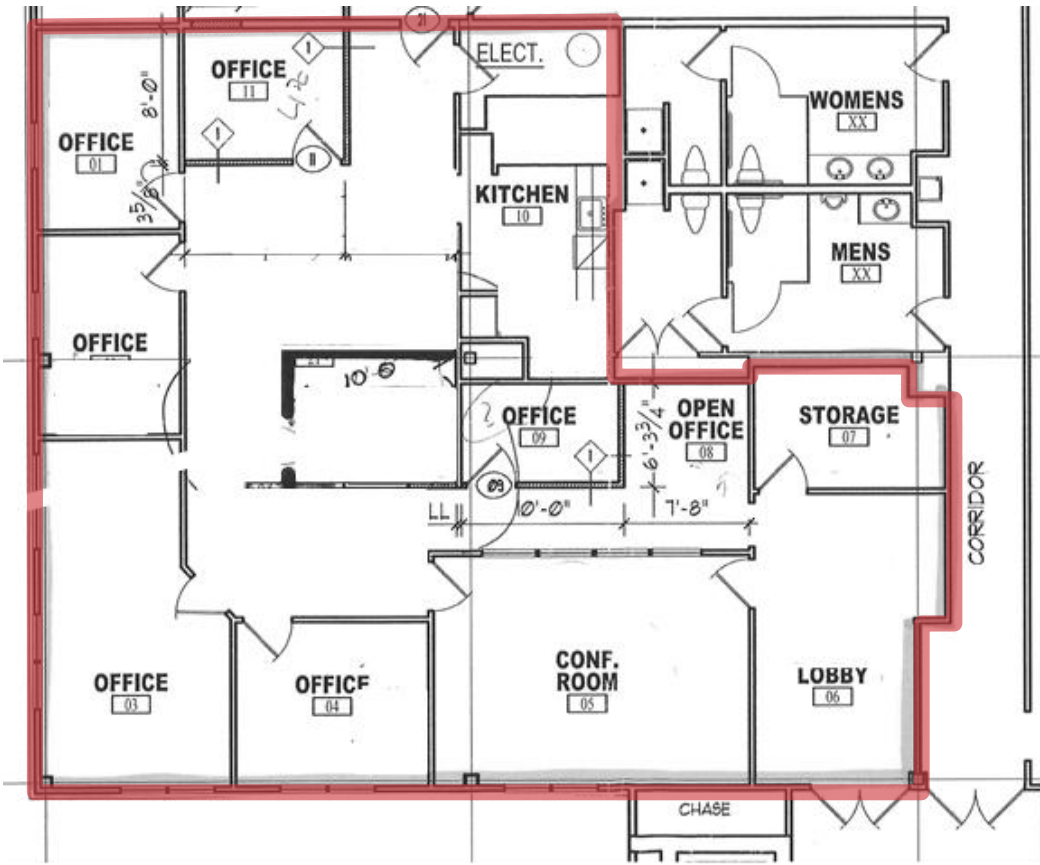
**Lease: \$19.00/SF plus all Operating Exp.
 (Op Ex Estimated at \$8.87/SF)**



For more information:
 Gerard Fennelly
fennelly@fennelly.com

For Sale or Lease
2,475 SF Office Space

1 Washington Blvd
Robbinsville, NJ 08691



2nd Floor

Suite 5
2,475 SF

