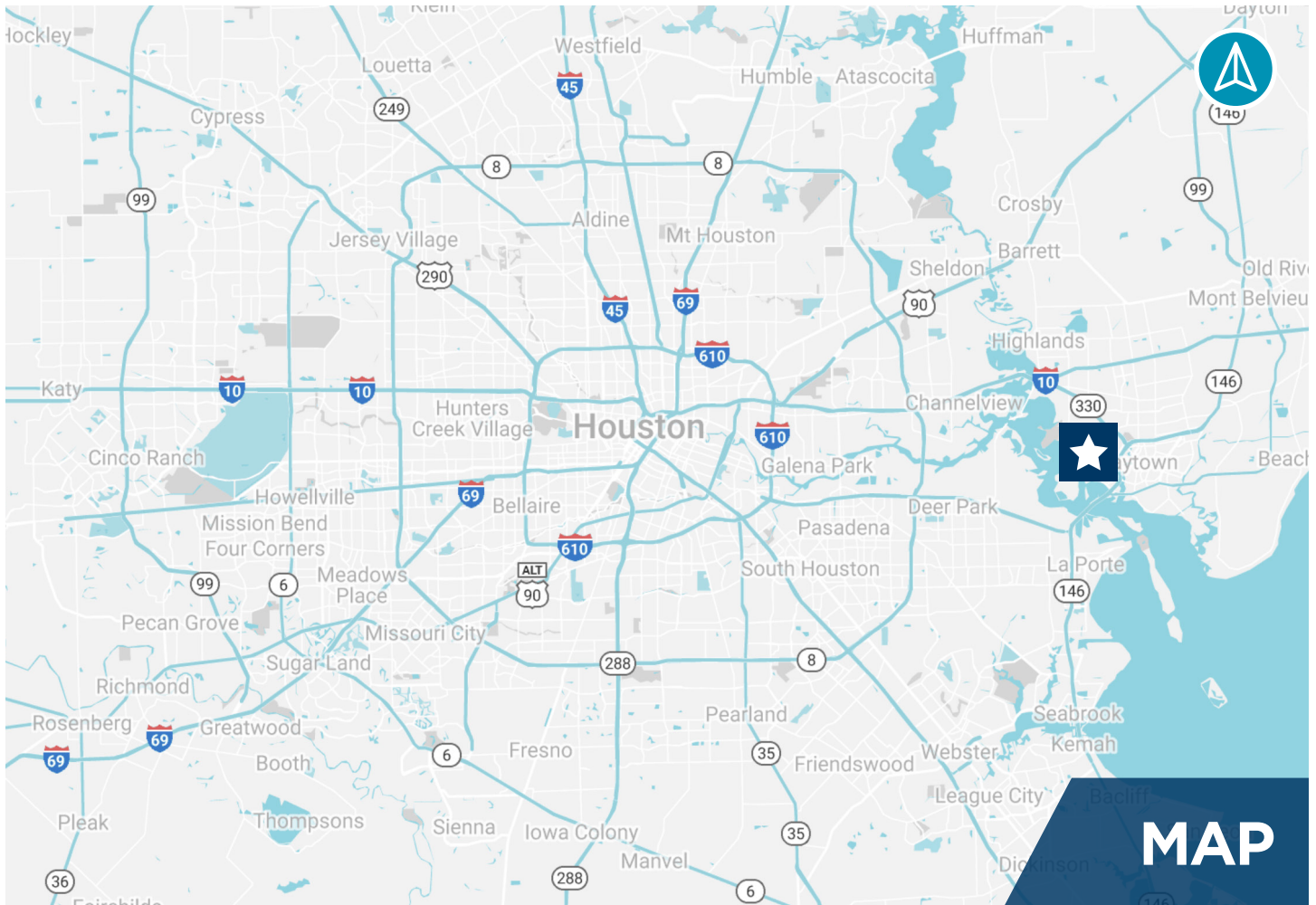




FOR LEASE
1220 S AIRHART
Baytown, TX 77520



PROPERTY FEATURES



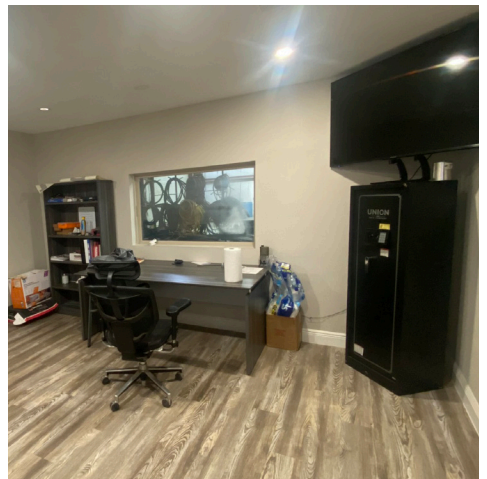
MAP

- Two buildings with a total of $\pm 16,250$ SF
- $\pm 14,000$ SF warehouse
- 4 grade level doors
- $\pm 14'$ eave
- $\pm 2,500$ SF air-conditioned office/warehouse
- 1 grade level door
- $\pm 12'$ eave
- Do not disturb tenant
- ± 6.5206 acres (± 3.2 acres stabilized)
- City of Baytown utilities
- Zoned light-industrial
- Outside 100-year floodplain
- Property did not flood during Harvey or Ike
- Close proximity to Hwy. 146, Exxonobil & Spur 330
- Lease rate: Contact Broker

SITE MAP



PHOTO GALLERY





**CUSHMAN &
WAKEFIELD**

CONTACT

Coe Parker, SIOR

+1 713 963 2825

coe.parker@cushwake.com

B. Kelley Parker III, SIOR

+1 713 963 2896

kelley.parker@cushwake.com

John F. Littman, SIOR

+1 713 963 2862

john.littman@cushwake.com

Cushman & Wakefield

Licensed Real Estate Brokers

1330 Post Oak Boulevard | Suite 2700

Houston, TX 77056

cushmanwakefield.com

©2024 Cushman & Wakefield. All rights reserved. The information contained in this communication is strictly confidential. This information has been obtained from sources believed to be reliable but has not been verified. NO WARRANTY OR REPRESENTATION, EXPRESS OR IMPLIED, IS MADE AS TO THE CONDITION OF THE PROPERTY (OR PROPERTIES) REFERENCED HEREIN OR AS TO THE ACCURACY OR COMPLETENESS OF THE INFORMATION CONTAINED HEREIN, AND SAME IS SUBMITTED SUBJECT TO ERRORS, OMISSIONS, CHANGE OF PRICE, RENTAL OR OTHER CONDITIONS, WITHDRAWAL WITHOUT NOTICE, AND TO ANY SPECIAL LISTING CONDITIONS IMPOSED BY THE PROPERTY OWNER(S). ANY PROJECTIONS, OPINIONS OR ESTIMATES ARE SUBJECT TO UNCERTAINTY AND DO NOT SIGNIFY CURRENT OR FUTURE PROPERTY PERFORMANCE.