

REDEVELOPMENT OPPORTUNITY

Beverly Area | Commercial and Residential Land Available | Off I-57



HIGHWAY VISIBILITY &
ACCESS

HIGH TRAFFIC CORRIDOR

Welcome to the Beverly/Morgan Park
Community

MONTEREY AT 111TH, CHICAGO, IL

THRIVING COMMERCIAL & RESIDENTIAL
CORRIDOR



PERFECT DEVELOPMENT
OPPORTUNITY

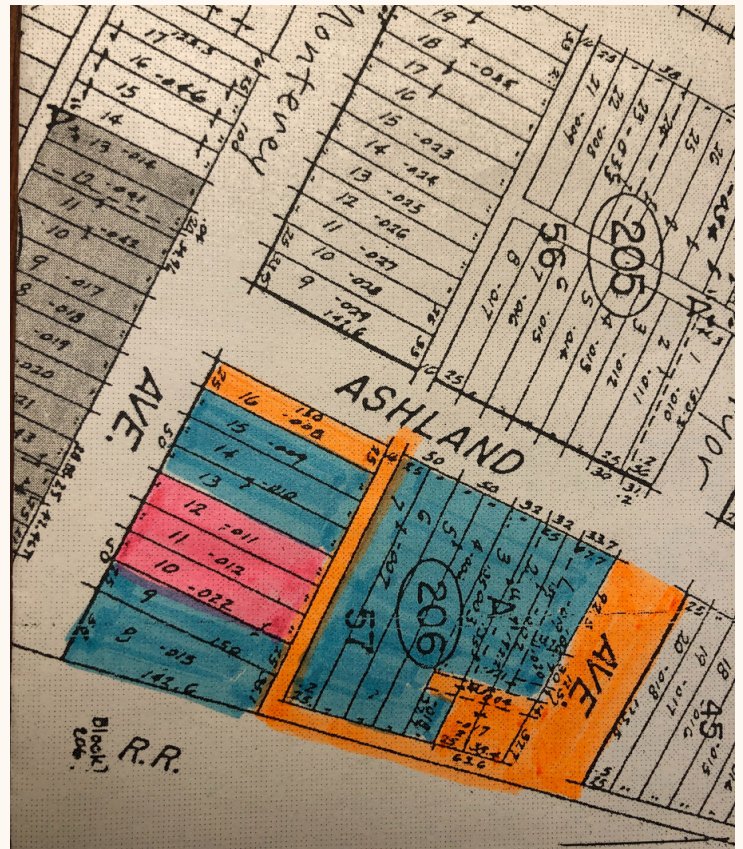
ZONING RM-5



5 Mile Demographics

Demographics:

	<u>1 MILE</u>	<u>3 MILE</u>	<u>5 MILE</u>
Population	23,586	202,546	468,076
# HH's	8,621	71,733	168,390
Avg HH Inc.	\$98,552	\$83,169	\$72,950



FP COMMERCIAL

sale | lease | invest | urban | global

Lauren@LaurenLowery.com | 312.315.5453
FPCommercial.org