

130

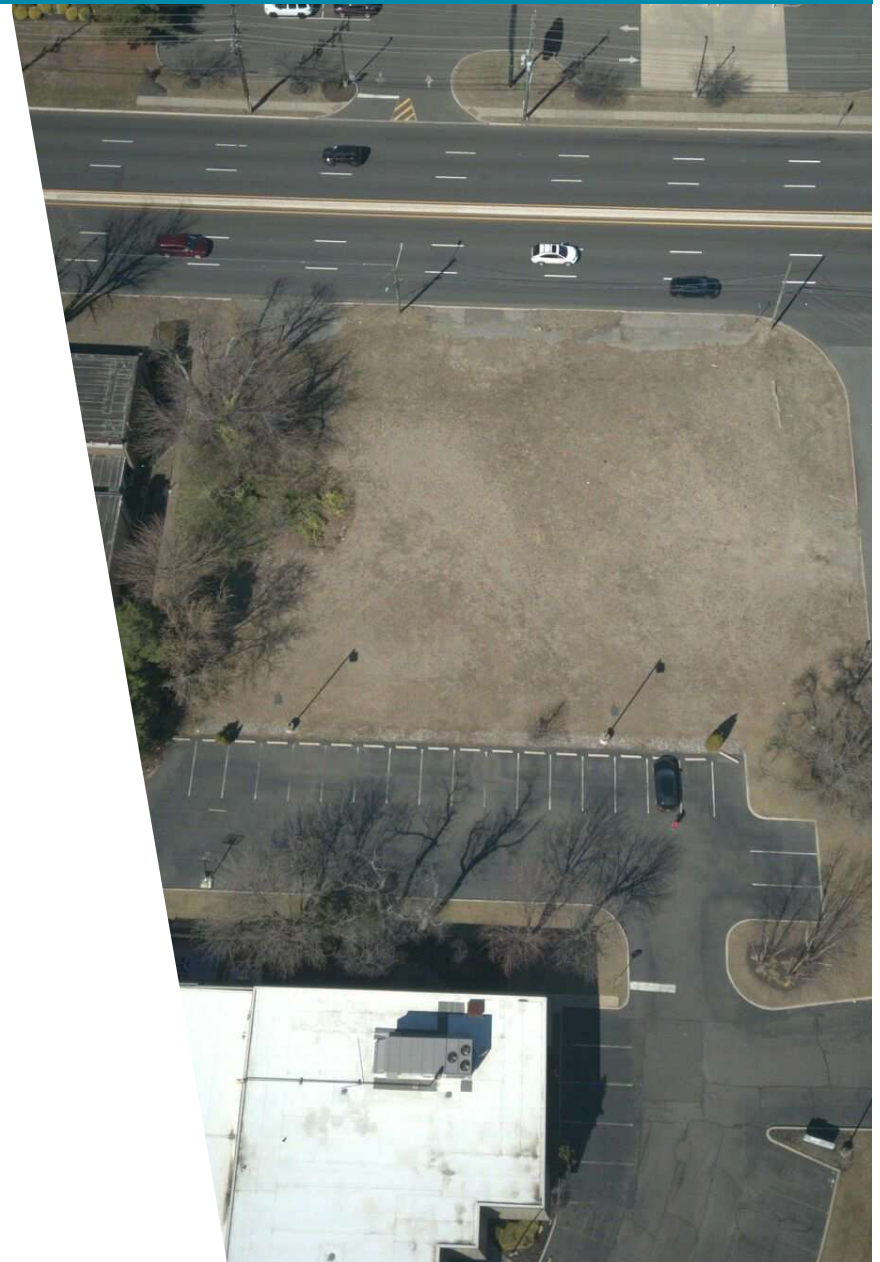
9340 NORTH CRESCENT BOULEVARD
PENNSAUKEN TOWNSHIP, NJ

AVAILABLE FOR LEASE
LAND

0.65 Acres

PROPERTY HIGHLIGHTS

- **SIZE:**
0.65 Acres
- **TOPOGRAPHY:**
Generally Level
- **FRONTAGE:**
200' North Crescent Boulevard (Route 130), 200' Commerce Highway
- **BLOCK/LOT:**
2502/15
- **PARKING:**
Ability to convey up to 10 additional automotive spaces
- **TAXES:**
\$5,181.36 (2024)
- **LOCATION:**
On the intersection of North Crescent Boulevard and Commerce Highway, the property has strategic access to local transportation arteries granting easy access to the Greater Philadelphia region.



ADDITIONAL PHOTOS



ADDITIONAL PHOTOS





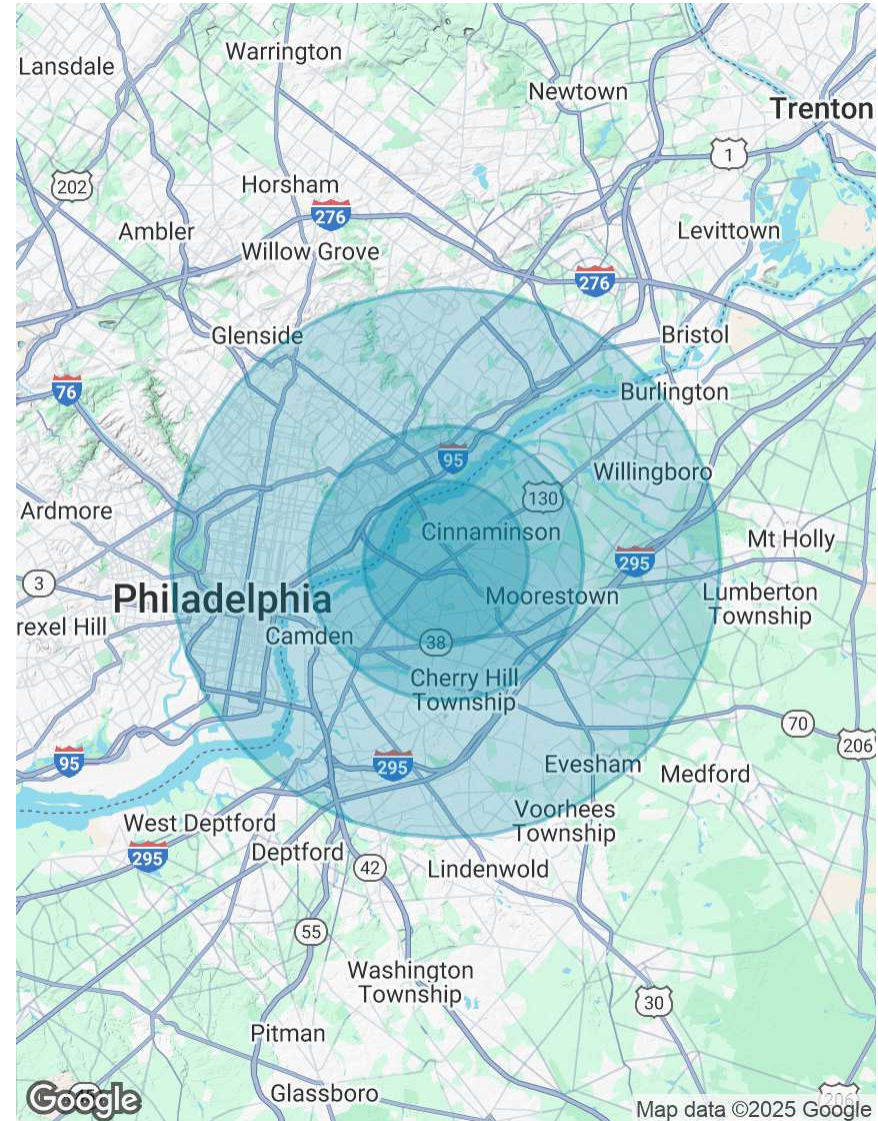
AREA MAP



WORKFORCE STATISTICS

POPULATION

	5 MILES	10 MILES
Total Population	399,541	1,947,125
Service-Producing Industry Employees	126,969	896,468
Goods-Producing Industry Employees	23,899	95,288
Total Specified Consumer Spending	\$4,219,698,024	\$21,675,172,911



CONTACT



Michael Torsiello, SIOR

Senior Vice President

215.448.6210

mtorsiello@binswanger.com



Christopher Pennington

Partner & Senior Vice President

215.448.6053

cpennington@binswanger.com



Three Logan Square
1717 Arch Street, Suite 5100
Philadelphia, PA 19103
Phone: 215.448.6000
binswanger.com

The information contained herein is from sources deemed reliable, but no warranty or representation is made as to the accuracy thereof and no liability may be imposed.