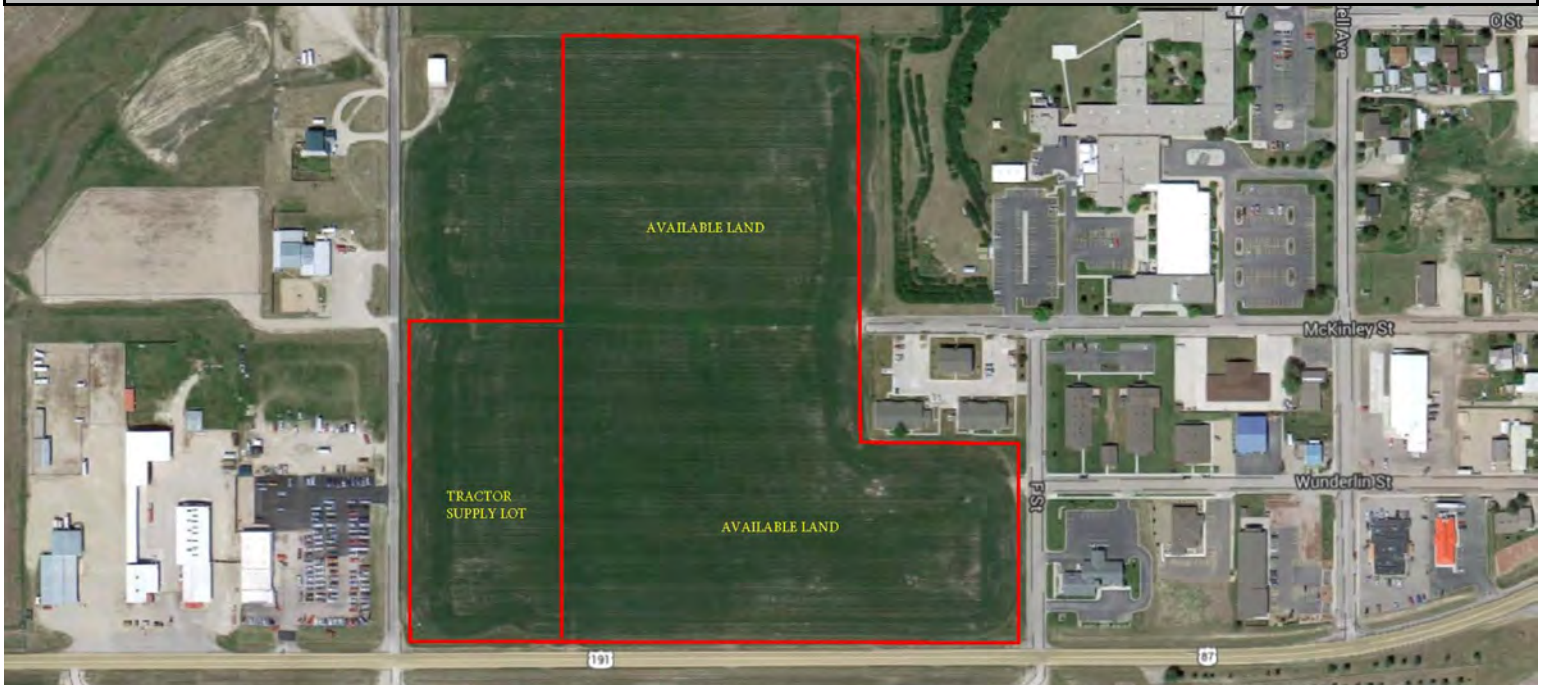


COCCA DEVELOPMENT

VACANT LAND FOR BTS FRONTAGE ROAD LEWISTOWN, MT 59457



- Join Tractor Supply Company and Burger King in new commercial development, with LOIs out for Medical Office and Grocery Store
- Located on US 191/State Highway 87, between Snowy Mountain Ford Dealership and Basin State Bank
- Lewistown is the geographic center of the state of Montana

AVAILABLE 20 ACRES

WILL BUILD TO SUIT

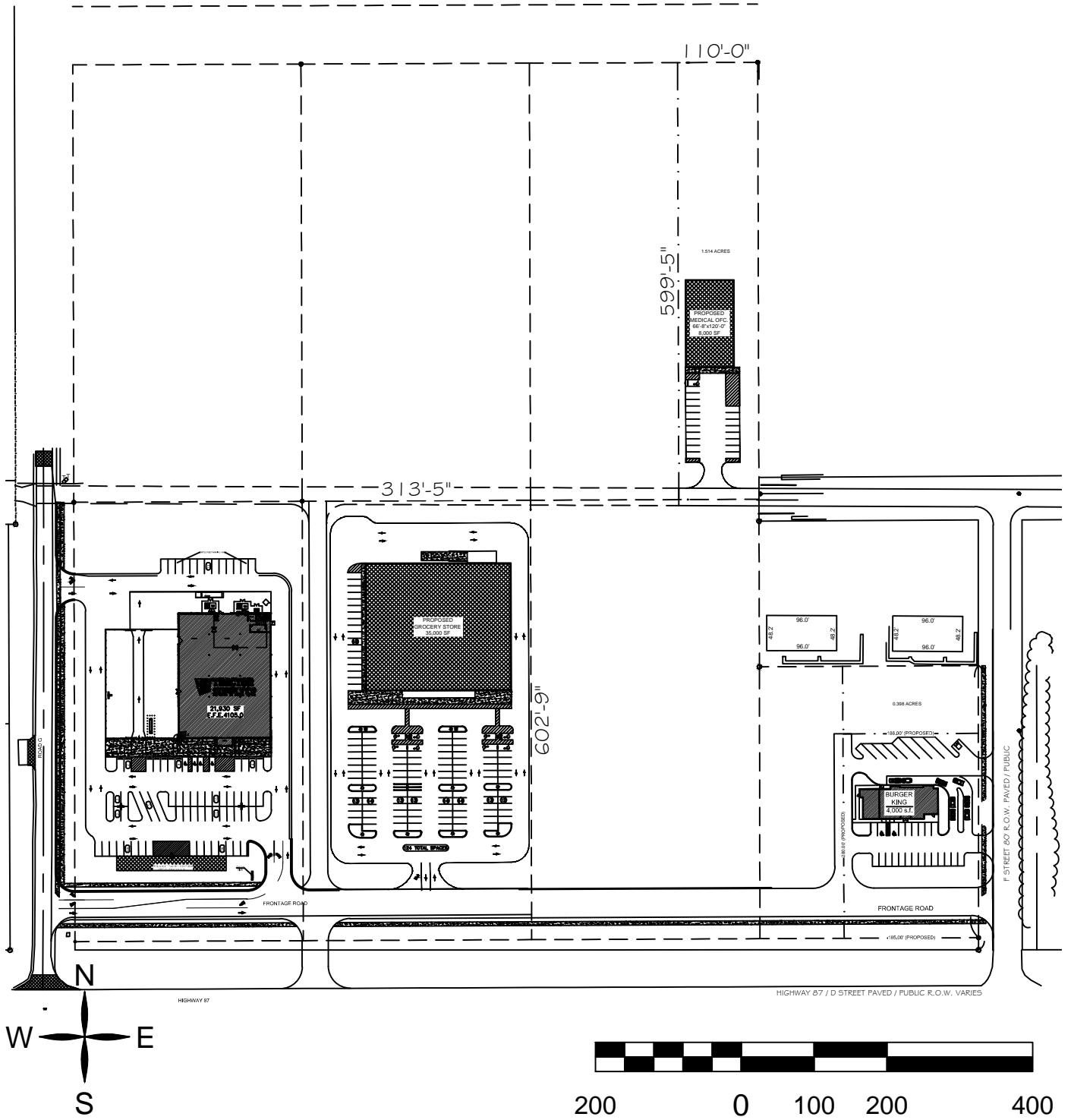
NNN: Base rent plus prorata share of Real Estate Taxes, Insurance, and Common Area expenses, including but not limited to snow removal, lawn care, and parking lot maintenance. Tenant pays separately metered utilities for gas, electric, water, sewer, & trash removal.

CALL 330-729-1010 FOR MORE INFORMATION

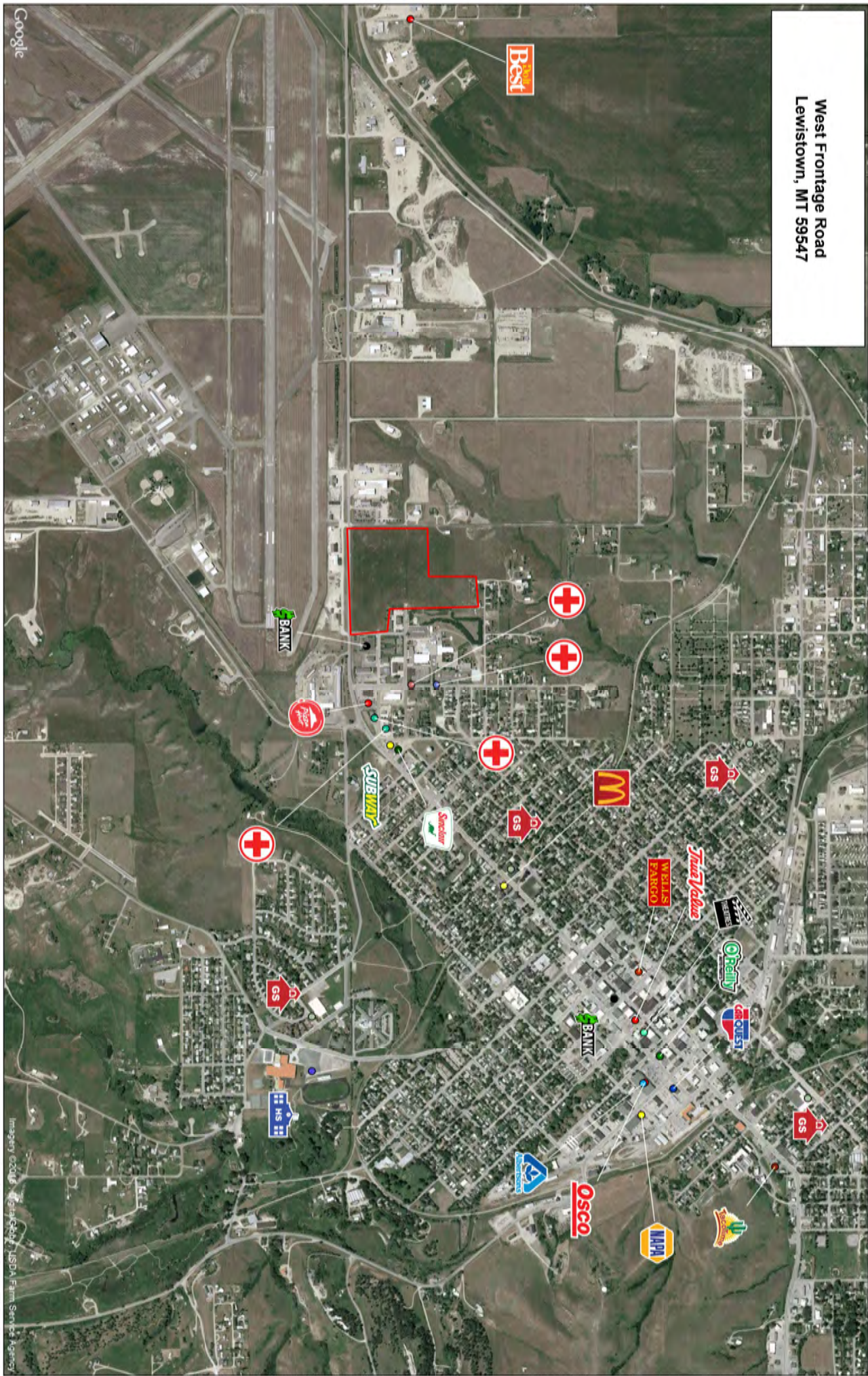
www.coccadevelopment.com

OVERALL SITE

I:\Land Projects\2006 Drawing After 6-12\Lewistown, MT (Grocery Store 2014)\Drawings\05 Preliminary\Site Plan 8-01-16.dwg, 8/1/2016 5:18:53 PM



West Frontage Road
Lewistown, MT 59547



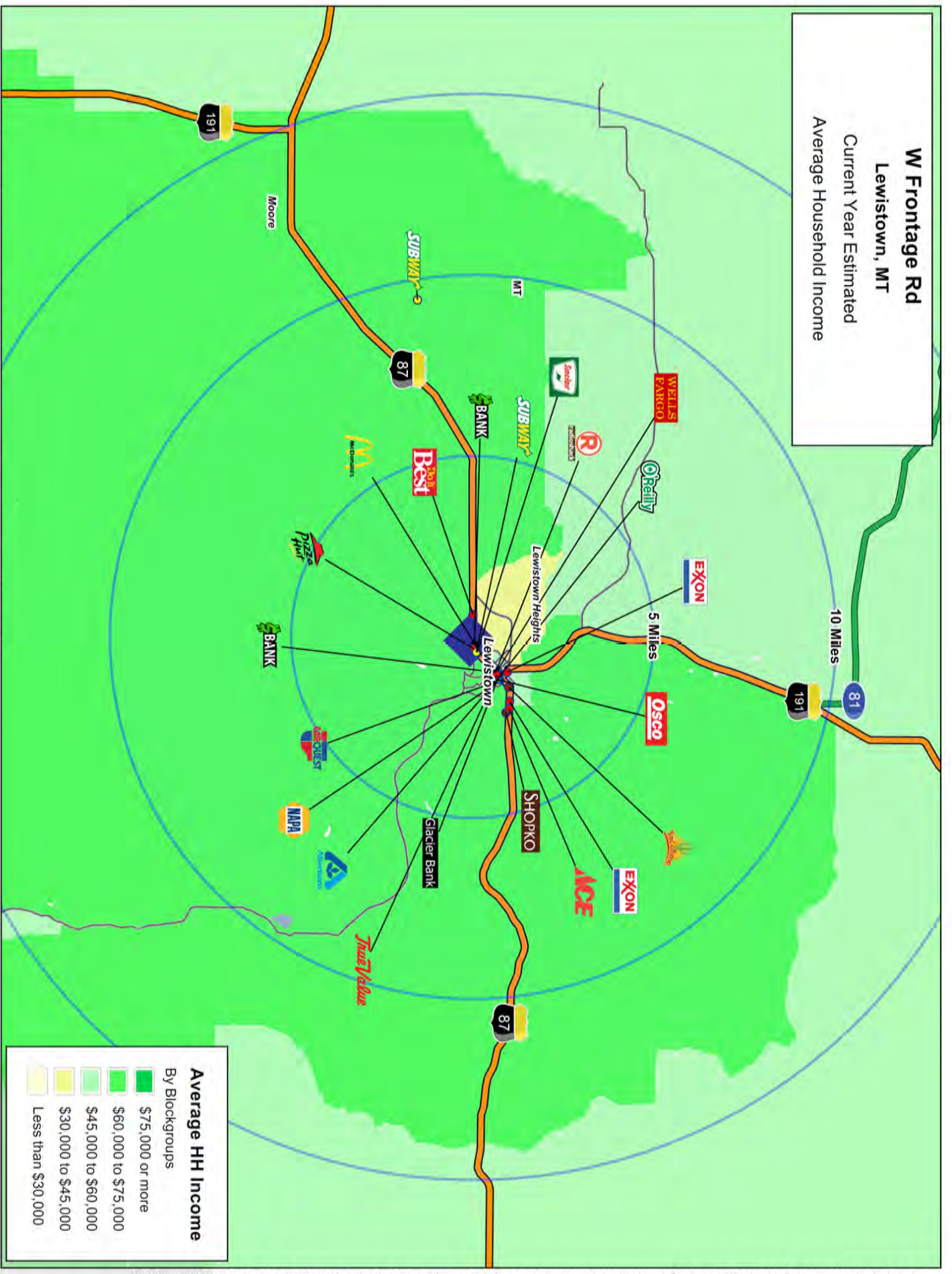
Google

This map was produced using data from private and government sources deemed to be reliable. The information herein is provided without representation or warranty.

Imagery ©2016 Google, ©2016 USDA, Farm Service Agency, ©2016 STSS USA Inc. Chandler, AZ 86014-9912 All Rights Reserved.

Logos are for identification purposes only and may be trademarks of their respective companies. LRF #7 07054 LWF: 1109 44210 Zoom: 15

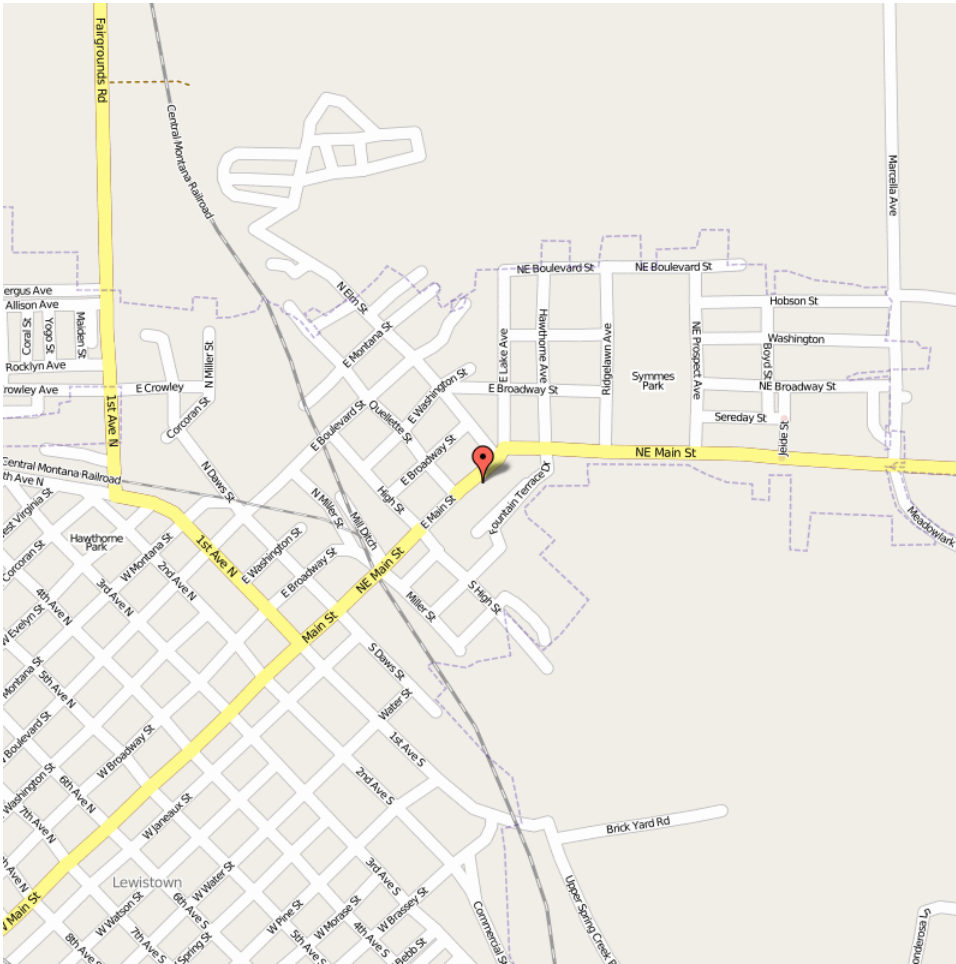
W Frontage Rd
Lewistown, MT
 Current Year Estimated
 Average Household Income



This map was produced using data from private and government sources deemed to be reliable. The information herein is provided without representation or warranty.

West Frontage Road

Lewistown MT 59547



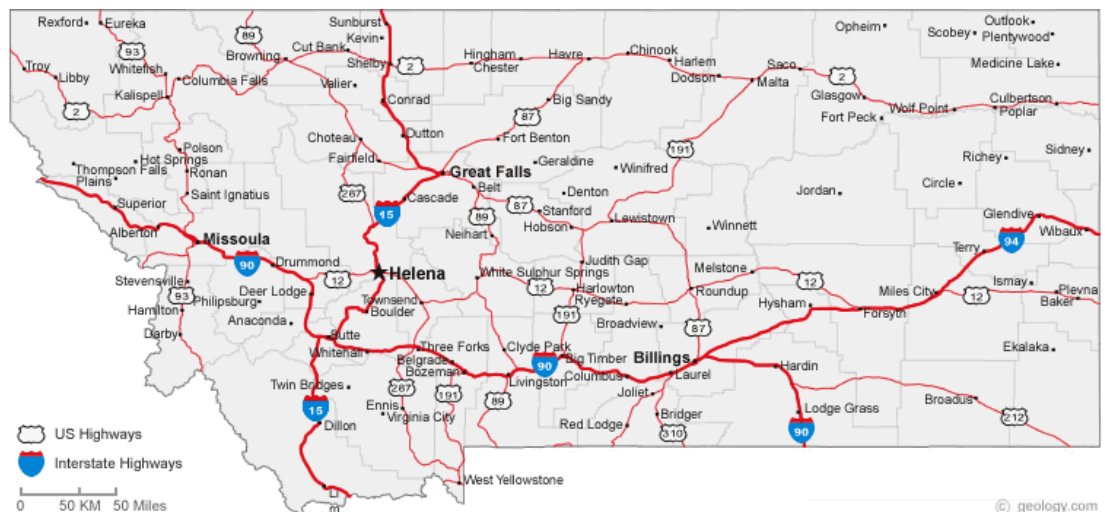
The site is located in Fergus County, Montana on Frontage Road, approximately 16 miles from US-191 and .2 miles off US-87.

Great Falls, MT is 92 miles northwest.

The city is the geographic center of the state of Montana

and is part of the Rocky Mountains, with an elevation of 3,963 feet.

It is 5.32 square miles with approximately 3,078 people per square mile.



COCCA DEVELOPMENT, LTD

Frontage Road/Highway 87 Lewistown, MT 59547

AT A GLANCE

- ◆ Lewistown was the site of a gold rush when gold was discovered in the nearby Judith Mountains in 1880. Before the gold rush, Maiden was the largest city in central Montana. When the gold supply ran out, many of the miners gained new employment in Lewistown and settled there permanently
- ◆ Surrounded by five stunning mountain ranges, Lewistown is steeped in the history of the old west. The Snowies, the Judiths, the Moccasins, the Belts, and the Highwoods all boast magnificent views from which grand 100-mile vistas stretch out below. Picturesque landscapes, mountain terrain, and small quiet towns are typical of the area
- ◆ Cattle ranching, wheat farming and hay production still provide the primary economic base
- ◆ Lewistown is a busy place with a strong sense of community and plenty of activities to keep everyone involved and challenged.

GRAPHIC PROFILE

2000-2010 Census, 2014 Estimates with 2019 Projections

Calculated using Proportional Block Groups

Lat/Lon: 47.0555/-109.4479

RGRAP3

W Frontage Rd

Lewistown, MT

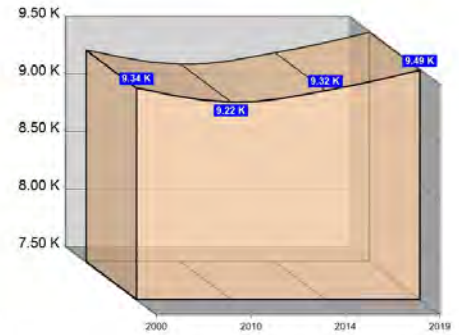
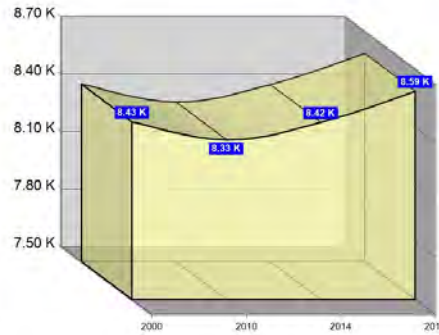
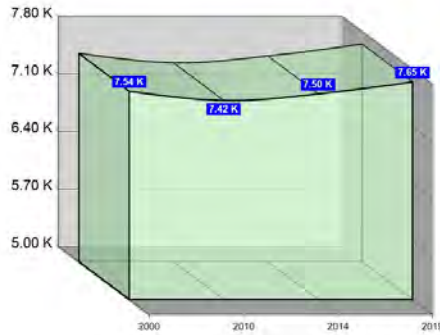
10 Miles

15 Miles

20 Miles

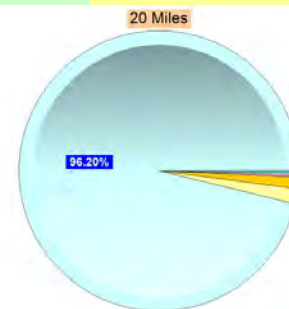
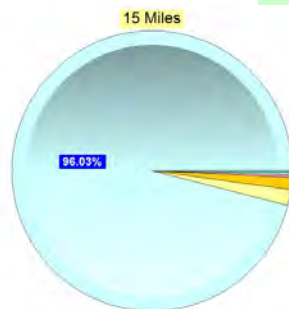
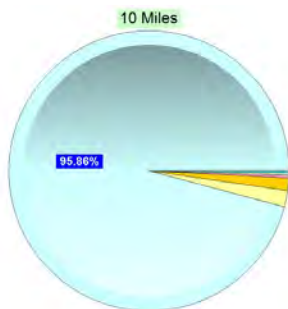
Population

Estimated Population (2014)	7,503	8,424	9,316
Projected Population (2019)	7,649	8,586	9,494
Census Population (2010)	7,422	8,333	9,218
Census Population (2000)	7,536	8,426	9,338
Projected Annual Growth (2014-2019)	145 0.4%	162 0.4%	178 0.4%
Historical Annual Growth (2010-2014)	81 -0.4%	91 -0.3%	99 -0.3%
Historical Annual Growth (2000-2010)	-113 -0.2%	-93 -0.1%	-120 -0.1%
Estimated Population Density (2014)	24 psm	12 psm	7 psm
Trade Area Size	314.0 sq mi	706.6 sq mi	1,256.1 sq mi



Race and Ethnicity (2014)

Not Hispanic or Latino Population	7,323 97.6%	8,230 97.7%	9,111 97.8%
White	7,066 96.5%	7,954 96.6%	8,818 96.8%
Black or African American	13 0.2%	13 0.2%	14 0.2%
American Indian or Alaska Native	100 1.4%	109 1.3%	116 1.3%
Asian	24 0.3%	25 0.3%	26 0.3%
Hawaiian or Pacific Islander	- -	- -	- -
Other Race	- -	- -	- -
Two or More Races	120 1.6%	129 1.6%	137 1.5%
Hispanic or Latino Population	180 2.4%	193 2.3%	205 2.2%
White	126 70.2%	135 69.9%	144 70.1%
Black or African American	7 3.9%	7 3.6%	7 3.4%
American Indian or Alaska Native	8 4.4%	8 4.1%	8 3.9%
Asian	- -	- -	- -
Hispanic Hawaiian or Pacific Islander	- -	- -	- -
Other Race	18 10.1%	19 10.1%	20 10.0%
Two or More Races	20 11.3%	24 12.3%	26 12.6%



White Black or African American American Indian or Alaska Native Asian Hawaiian or Pacific Islander Other Race 2+ Races

This report was produced using data from private and government sources deemed to be reliable. The information herein is provided without representation or warranty.

GRAPHIC PROFILE

2000-2010 Census, 2014 Estimates with 2019 Projections

Calculated using Proportional Block Groups

Lat/Lon: 47.0555/-109.4479

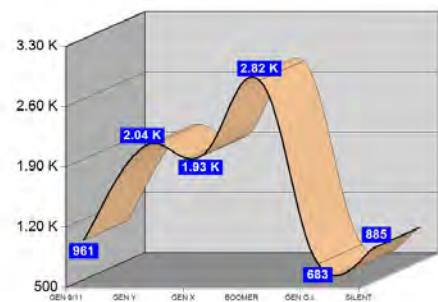
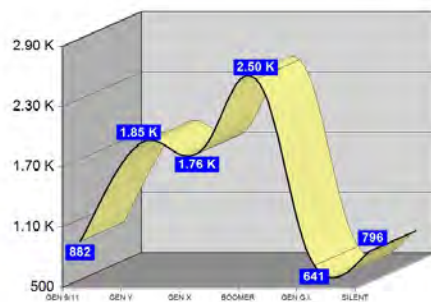
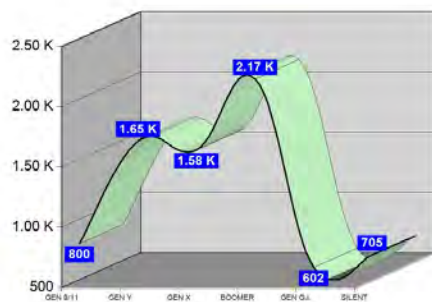
RGRAP3

W Frontage Rd Lewistown, MT

	10 Miles	15 Miles	20 Miles
Age Distribution (2014)			
Age Under 5 Years	377 5.0%	419 5.0%	457 4.9%
Age 5 to 9 Years	423 5.6%	463 5.5%	504 5.4%
Age 10 to 14 Years	401 5.3%	456 5.4%	509 5.5%
Age 15 to 19 Years	422 5.6%	474 5.6%	525 5.6%
Age 20 to 24 Years	365 4.9%	400 4.8%	436 4.7%
Age 25 to 29 Years	390 5.2%	427 5.1%	464 5.0%
Age 30 to 34 Years	442 5.9%	484 5.7%	524 5.6%
Age 35 to 39 Years	387 5.2%	433 5.1%	475 5.1%
Age 40 to 44 Years	388 5.2%	439 5.2%	487 5.2%
Age 45 to 49 Years	433 5.8%	493 5.9%	551 5.9%
Age 50 to 54 Years	504 6.7%	587 7.0%	667 7.2%
Age 55 to 59 Years	574 7.7%	666 7.9%	754 8.1%
Age 60 to 64 Years	594 7.9%	682 8.1%	762 8.2%
Age 65 to 69 Years	494 6.6%	564 6.7%	632 6.8%
Age 70 to 74 Years	393 5.2%	449 5.3%	502 5.4%
Age 75 to 79 Years	312 4.2%	348 4.1%	384 4.1%
Age 80 to 84 Years	274 3.7%	294 3.5%	315 3.4%
Age 85 Years or Over	327 4.4%	347 4.1%	369 4.0%
Median Age	45.6	46.0	46.3

	10 Miles	15 Miles	20 Miles
Generation (2014)			
Generation 9/11 Millennials (Age Under 10 Years)	800 10.7%	882 10.5%	961 10.3%
Gen Y to Echo Boomers (Age 10 to 29 Years)	1,578 21.0%	1,757 20.9%	1,933 20.8%
Gen Xers (Age 30 to 49 Years)	1,651 22.0%	1,848 21.9%	2,037 21.9%
Baby Boomers (Age 50 to 69 Years)	2,167 28.9%	2,499 29.7%	2,816 30.2%
Silent Generation (Age 70 to 79 Years)	705 9.4%	796 9.5%	885 9.5%
G.I. Generation (Age 80 Years or Over)	602 8.0%	641 7.6%	683 7.3%

This report was produced using data from private and government sources deemed to be reliable. The information herein is provided without representation or warranty.



GRAPHIC PROFILE

2000-2010 Census, 2014 Estimates with 2019 Projections

Calculated using Proportional Block Groups

Lat/Lon: 47.0555/-109.4479

RGRAP3

W Frontage Rd

Lewistown, MT

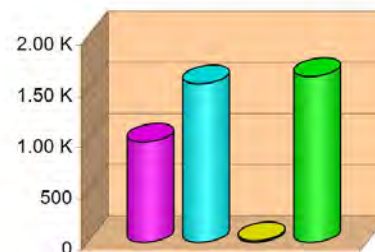
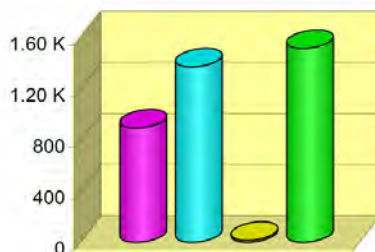
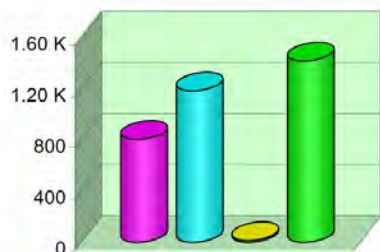
10 Miles

15 Miles

20 Miles

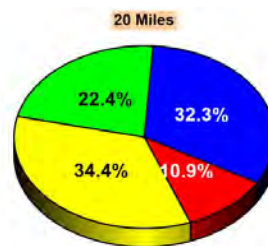
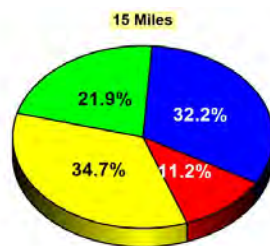
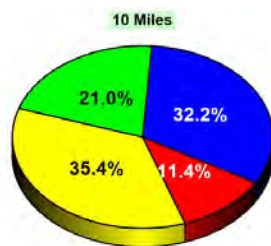
Household Type (2014)

	10 Miles	15 Miles	20 Miles
Total Households	3,422	3,795	4,167
Family Households	1,990 34.6%	2,265 36.1%	2,530 37.2%
Family Households with Children	806 40.5%	893 39.4%	980 38.7%
Family Households No Children	1,185 59.5%	1,371 60.6%	1,550 61.3%
Non-Family Households	1,432 34.6%	1,530 36.1%	1,637 37.2%
Non-Family Households with Children	14 1.0%	15 1.0%	16 1.0%
Non-Family Households No Children	1,418 99.0%	1,515 99.0%	1,621 99.0%



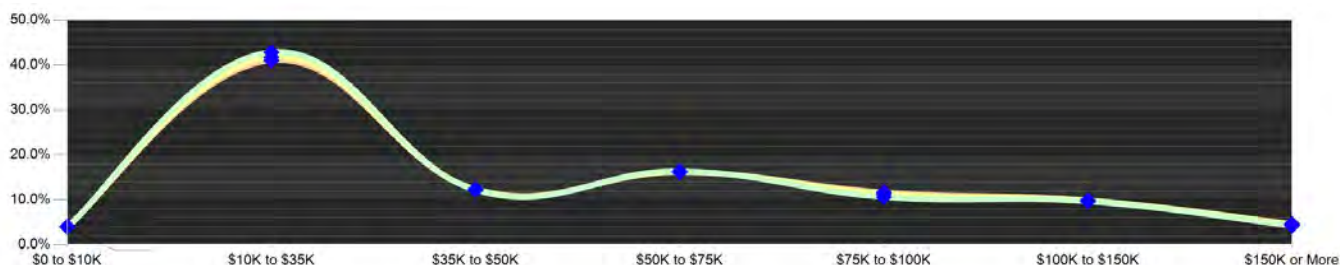
Education Attainment (2014)

	10 Miles	15 Miles	20 Miles
Elementary or Some High School	604 11.4%	666 11.2%	721 10.9%
High School Graduate	1,877 35.4%	2,069 34.7%	2,270 34.4%
Some College or Associate Degree	1,709 32.2%	1,921 32.2%	2,130 32.3%
Bachelor or Graduate Degree	1,117 21.0%	1,305 21.9%	1,481 22.4%



Household Income (2014)

	10 Miles	15 Miles	20 Miles
Estimated Average Household Income	\$47,281	\$48,419	\$49,117
Estimated Median Household Income	\$37,285	\$37,916	\$38,315
HH Income Under \$10,000	134 3.9%	152 4.0%	172 4.1%
HH Income \$10,000 to \$34,999	1,468 42.9%	1,585 41.8%	1,711 41.1%
HH Income \$35,000 to \$49,999	418 12.2%	466 12.3%	516 12.4%
HH Income \$50,000 to \$74,999	561 16.4%	618 16.3%	674 16.2%
HH Income \$75,000 to \$99,999	331 9.7%	374 9.8%	413 9.9%
HH Income \$100,000 to \$149,999	331 9.7%	374 9.8%	413 9.9%
HH Income \$150,000 or More	145 4.2%	172 4.5%	194 4.7%



This report was produced using data from private and government sources deemed to be reliable. The information herein is provided without representation or warranty.

EXPANDED PROFILE

2000-2010 Census, 2014 Estimates with 2019 Projections

Calculated using Proportional Block Groups

Lat/Lon: 47.0555/-109.4479

RF5

W Frontage Rd	10 Miles	15 Miles	20 Miles
Lewistown, MT			
Population			
Estimated Population (2014)	7,503	8,424	9,316
Projected Population (2019)	7,649	8,586	9,494
Census Population (2010)	7,422	8,333	9,218
Census Population (2000)	7,536	8,426	9,338
Projected Annual Growth (2014 to 2019)	145 0.4%	162 0.4%	178 0.4%
Historical Annual Growth (2010 to 2014)	81 0.3%	91 0.3%	99 0.3%
Historical Annual Growth (2000 to 2010)	-113 -0.2%	-93 -0.1%	-120 -0.1%
Estimated Population Density (2014)	24 <i>psm</i>	12 <i>psm</i>	7 <i>psm</i>
Trade Area Size	314.02 <i>sq mi</i>	706.57 <i>sq mi</i>	1,256.06 <i>sq mi</i>
Households			
Estimated Households (2014)	3,422	3,795	4,167
Projected Households (2019)	3,502	3,884	4,264
Census Households (2010)	3,384	3,753	4,119
Census Households (2000)	3,219	3,557	3,907
Estimated Households with Children (2014)	820 24.0%	908 23.9%	996 23.9%
Estimated Average Household Size (2014)	2.13	2.15	2.16
Average Household Income			
Estimated Average Household Income (2014)	\$54,462	\$55,803	\$56,475
Projected Average Household Income (2019)	\$58,796	\$60,219	\$60,927
Estimated Average Family Income (2014)	\$69,593	\$70,261	\$70,364
Median Household Income			
Estimated Median Household Income (2014)	\$40,241	\$41,451	\$42,010
Projected Median Household Income (2019)	\$43,790	\$45,000	\$45,546
Estimated Median Family Income (2014)	\$57,192	\$57,814	\$57,849
Per Capita Income			
Estimated Per Capita Income (2014)	\$25,165	\$25,527	\$25,673
Projected Per Capita Income (2019)	\$27,267	\$27,649	\$27,807
Estimated Per Capita income 5 Year Growth	\$2,103 8.4%	\$2,122 8.3%	\$2,133 8.3%
Estimated Average Household Net Worth (2014)	\$327,466	\$336,272	\$341,686
Daytime Demos (2014)			
Total Businesses	557	609	659
Total Employees	4,289	4,588	4,847
Company Headquarter Businesses	1 0.2%	1 0.2%	1 0.2%
Company Headquarter Employees	26 0.6%	26 0.6%	28 0.6%
Employee Population per Business	7.7	7.5	7.4
Residential Population per Business	13.5	13.8	14.1

This report was produced using data from private and government sources deemed to be reliable. The information herein is provided without representation or warranty.

EXPANDED PROFILE

2000-2010 Census, 2014 Estimates with 2019 Projections

Calculated using Proportional Block Groups

Lat/Lon: 47.0555/-109.4479

RF5

W Frontage Rd

Lewistown, MT

Race & Ethnicity

	10 Miles		15 Miles		20 Miles	
White (2014)	7,193	95.9%	8,089	96.0%	8,962	96.2%
Black or African American (2014)	20	0.3%	20	0.2%	21	0.2%
American Indian or Alaska Native (2014)	108	1.4%	117	1.4%	124	1.3%
Asian (2014)	24	0.3%	25	0.3%	26	0.3%
Hawaiian or Pacific Islander (2014)	-	-	-	-	-	-
Other Race (2014)	18	0.2%	19	0.2%	20	0.2%
Two or More Races (2014)	141	1.9%	153	1.8%	163	1.7%
Not Hispanic or Latino Population (2014)	7,323	97.6%	8,230	97.7%	9,111	97.8%
Hispanic or Latino Population (2014)	180	2.4%	193	2.3%	205	2.2%
Not Hispanic or Latino Population (2019)	7,431	97.2%	8,352	97.3%	9,246	97.4%
Hispanic or Latino Population (2019)	218	2.8%	234	2.7%	248	2.6%
Not Hispanic or Latino Population (2010)	7,285	98.2%	8,185	98.2%	9,061	98.3%
Hispanic or Latino Population (2010)	137	1.8%	147	1.8%	157	1.7%
Not Hispanic or Latino Population (2000)	7,478	99.2%	8,361	99.2%	9,265	99.2%
Hispanic or Latino Population (2000)	58	0.8%	65	0.8%	73	0.8%
Projected Hispanic Annual Growth (2014 to 2019)	38	4.2%	40	4.2%	43	4.2%
Historic Hispanic Annual Growth (2000 to 2014)	122	15.0%	128	14.0%	132	12.9%

Age Distribution (2014)

Age Under 5	377	5.0%	419	5.0%	457	4.9%
Age 5 to 9 Years	423	5.6%	463	5.5%	504	5.4%
Age 10 to 14 Years	401	5.3%	456	5.4%	509	5.5%
Age 15 to 19 Years	422	5.6%	474	5.6%	525	5.6%
Age 20 to 24 Years	365	4.9%	400	4.8%	436	4.7%
Age 25 to 29 Years	390	5.2%	427	5.1%	464	5.0%
Age 30 to 34 Years	442	5.9%	484	5.7%	524	5.6%
Age 35 to 39 Years	387	5.2%	433	5.1%	475	5.1%
Age 40 to 44 Years	388	5.2%	439	5.2%	487	5.2%
Age 45 to 49 Years	433	5.8%	493	5.9%	551	5.9%
Age 50 to 54 Years	504	6.7%	587	7.0%	667	7.2%
Age 55 to 59 Years	574	7.7%	666	7.9%	754	8.1%
Age 60 to 64 Years	594	7.9%	682	8.1%	762	8.2%
Age 65 to 74 Years	888	11.8%	1,013	12.0%	1,134	12.2%
Age 75 to 84 Years	586	7.8%	642	7.6%	698	7.5%
Age 85 Years or Over	327	4.4%	347	4.1%	369	4.0%
Median Age	45.6		46.0		46.3	

Gender Age Distribution (2014)

Female Population	3,839	51.2%	4,270	50.7%	4,691	50.4%
Age 0 to 19 Years	800	20.8%	890	20.8%	977	20.8%
Age 20 to 64 Years	2,056	53.6%	2,304	54.0%	2,544	54.2%
Age 65 Years or Over	983	25.6%	1,076	25.2%	1,170	24.9%
Female Median Age	47.1		47.3		47.5	
Male Population	3,664	48.8%	4,153	49.3%	4,625	49.6%
Age 0 to 19 Years	824	22.5%	922	22.2%	1,018	22.0%
Age 20 to 64 Years	2,022	55.2%	2,306	55.5%	2,577	55.7%
Age 65 Years or Over	818	22.3%	925	22.3%	1,031	22.3%
Male Median Age	44.0		44.6		45.0	

This report was produced using data from private and government sources deemed to be reliable. The information herein is provided without representation or warranty.

EXPANDED PROFILE

2000-2010 Census, 2014 Estimates with 2019 Projections

Calculated using Proportional Block Groups

Lat/Lon: 47.0555/-109.4479

RF5

W Frontage Rd Lewistown, MT	10 Miles		15 Miles		20 Miles	
Household Income Distribution (2014)						
HH Income \$200,000 or More	66	1.9%	84	2.2%	99	2.4%
HH Income \$150,000 to \$199,999	79	2.3%	88	2.3%	95	2.3%
HH Income \$100,000 to \$149,999	331	9.7%	374	9.8%	413	9.9%
HH Income \$75,000 to \$99,999	364	10.6%	429	11.3%	486	11.7%
HH Income \$50,000 to \$74,999	561	16.4%	618	16.3%	674	16.2%
HH Income \$35,000 to \$49,999	418	12.2%	466	12.3%	516	12.4%
HH Income \$25,000 to \$34,999	477	13.9%	514	13.5%	561	13.5%
HH Income \$15,000 to \$24,999	694	20.3%	755	19.9%	813	19.5%
HH Income Under \$15,000	432	12.6%	468	12.3%	509	12.2%
HH Income \$35,000 or More	1,820	53.2%	2,058	54.2%	2,284	54.8%
HH Income \$75,000 or More	840	24.5%	975	25.7%	1,093	26.2%
Housing (2014)						
Total Housing Units	3,699		4,130		4,578	
Housing Units Occupied	3,422	92.5%	3,795	91.9%	4,167	91.0%
Housing Units Owner-Occupied	2,400	70.1%	2,707	71.3%	3,005	72.1%
Housing Units, Renter-Occupied	1,022	29.9%	1,089	28.7%	1,162	27.9%
Housing Units, Vacant	277	7.5%	335	8.1%	411	9.0%
Marital Status (2014)						
Never Married	1,329	21.1%	1,450	20.5%	1,579	20.1%
Currently Married	3,168	50.3%	3,675	51.9%	4,156	53.0%
Separated	291	4.6%	335	4.7%	369	4.7%
Widowed	609	9.7%	637	9.0%	677	8.6%
Divorced	905	14.4%	988	14.0%	1,066	13.6%
Household Type (2014)						
Population Family	5,514	73.5%	6,257	74.3%	6,975	74.9%
Population Non-Family	1,763	23.5%	1,885	22.4%	2,013	21.6%
Population Group Quarters	226	3.0%	281	3.3%	328	3.5%
Family Households	1,990	58.2%	2,265	59.7%	2,530	60.7%
Non-Family Households	1,432	41.8%	1,530	40.3%	1,637	39.3%
Married Couple with Children	543	17.1%	612	16.7%	681	16.4%
Average Family Household Size	2.8		2.8		2.8	
Household Size (2014)						
1 Person Households	1,245	36.4%	1,331	35.1%	1,424	34.2%
2 Person Households	1,279	37.4%	1,457	38.4%	1,628	39.1%
3 Person Households	397	11.6%	448	11.8%	497	11.9%
4 Person Households	301	8.8%	338	8.9%	374	9.0%
5 Person Households	135	4.0%	151	4.0%	166	4.0%
6 or More Person Households	64	1.9%	70	1.8%	77	1.9%
Household Vehicles (2014)						
Households with 0 Vehicles Available	241	7.0%	259	6.8%	272	6.5%
Households with 1 Vehicles Available	1,154	33.7%	1,199	31.6%	1,252	30.0%
Households with 2 or More Vehicles Available	2,028	59.3%	2,338	61.6%	2,642	63.4%
Total Vehicles Available	6,507		7,418		8,336	
Average Vehicles Per Household	1.9		2.0		2.0	

This report was produced using data from private and government sources deemed to be reliable. The information herein is provided without representation or warranty.

EXPANDED PROFILE

2000-2010 Census, 2014 Estimates with 2019 Projections

Calculated using Proportional Block Groups

Lat/Lon: 47.0555/-109.4479

RF5

W Frontage Rd

Lewistown, MT

Labor Force (2014)

	10 Miles	15 Miles	20 Miles
Estimated Labor Population Age 16 Years or Over	6,001	6,725	7,436
Estimated Civilian Employed	3,392 56.5%	3,807 56.6%	4,208 56.6%
Estimated Civilian Unemployed	213 3.6%	238 3.5%	262 3.5%
Estimated in Armed Forces	- -	1 -	1 -
Estimated Not in Labor Force	2,395 39.9%	2,678 39.8%	2,965 39.9%
Unemployment Rate	3.6%	3.5%	3.5%

Occupation (2010)

	10 Miles	15 Miles	20 Miles
Occupation: Population Age 16 Years or Over	3,343	3,831	4,283
Management, Business, Financial Operations	397 11.9%	527 13.8%	658 15.4%
Professional, Related	761 22.8%	874 22.8%	971 22.7%
Service	843 25.2%	912 23.8%	972 22.7%
Sales, Office	710 21.3%	800 20.9%	874 20.4%
Farming, Fishing, Forestry	61 1.8%	92 2.4%	120 2.8%
Construct, Extraction, Maintenance	244 7.3%	265 6.9%	287 6.7%
Production, Transport Material Moving	326 9.8%	363 9.5%	401 9.4%
White Collar Workers	1,869 55.9%	2,200 57.4%	2,503 58.4%
Blue Collar Workers	1,474 44.1%	1,631 42.6%	1,780 41.6%

Consumer Expenditure (2014)

	10 Miles	15 Miles	20 Miles
Total Household Expenditure	\$158 M	\$179 M	\$198 M
Total Non-Retail Expenditure	\$90.4 M 57.1%	\$102 M 57.1%	\$113 M 57.1%
Total Retail Expenditure	\$67.9 M 42.9%	\$76.5 M 42.9%	\$84.7 M 42.9%
Apparel	\$7.49 M 4.7%	\$8.44 M 4.7%	\$9.34 M 4.7%
Contributions	\$5.68 M 3.6%	\$6.44 M 3.6%	\$7.15 M 3.6%
Education	\$3.52 M 2.2%	\$3.98 M 2.2%	\$4.41 M 2.2%
Entertainment	\$8.75 M 5.5%	\$9.88 M 5.5%	\$10.9 M 5.5%
Food and Beverages	\$24.6 M 15.5%	\$27.7 M 15.5%	\$30.6 M 15.5%
Furnishings and Equipment	\$6.73 M 4.3%	\$7.62 M 4.3%	\$8.45 M 4.3%
Gifts	\$4.10 M 2.6%	\$4.64 M 2.6%	\$5.14 M 2.6%
Health Care	\$10.2 M 6.5%	\$11.5 M 6.4%	\$12.7 M 6.4%
Household Operations	\$5.44 M 3.4%	\$6.15 M 3.4%	\$6.82 M 3.4%
Miscellaneous Expenses	\$2.71 M 1.7%	\$3.05 M 1.7%	\$3.37 M 1.7%
Personal Care	\$2.30 M 1.5%	\$2.59 M 1.5%	\$2.87 M 1.5%
Personal Insurance	\$1.56 M 1.0%	\$1.76 M 1.0%	\$1.95 M 1.0%
Reading	\$523 K 0.3%	\$589 K 0.3%	\$652 K 0.3%
Shelter	\$30.5 M 19.3%	\$34.4 M 19.3%	\$38.1 M 19.3%
Tobacco	\$1.11 M 0.7%	\$1.25 M 0.7%	\$1.38 M 0.7%
Transportation	\$31.6 M 20.0%	\$35.7 M 20.0%	\$39.5 M 20.0%
Utilities	\$11.4 M 7.2%	\$12.8 M 7.2%	\$14.2 M 7.2%

Educational Attainment (2014)

	10 Miles	15 Miles	20 Miles
Adult Population Age 25 Years or Over	5,306	5,961	6,602
Elementary (Grade Level 0 to 8)	279 5.3%	300 5.0%	319 4.8%
Some High School (Grade Level 9 to 11)	324 6.1%	366 6.1%	402 6.1%
High School Graduate	1,877 35.4%	2,069 34.7%	2,270 34.4%
Some College	1,199 22.6%	1,352 22.7%	1,507 22.8%
Associate Degree Only	510 9.6%	568 9.5%	623 9.4%
Bachelor Degree Only	666 12.6%	780 13.1%	898 13.6%
Graduate Degree	451 8.5%	526 8.8%	583 8.8%

This report was produced using data from private and government sources deemed to be reliable. The information herein is provided without representation or warranty.

EXPANDED PROFILE

2000-2010 Census, 2014 Estimates with 2019 Projections

Calculated using Proportional Block Groups

Lat/Lon: 47.0555/-109.4479

RF5

W Frontage Rd	10 Miles		15 Miles		20 Miles	
Lewistown, MT						
Units In Structure (2010)						
1 Detached Unit	2,357	69.7%	2,663	71.0%	2,967	72.0%
1 Attached Unit	59	1.7%	66	1.8%	73	1.8%
2 to 4 Units	253	7.5%	256	6.8%	260	6.3%
5 to 9 Units	157	4.6%	157	4.2%	158	3.8%
10 to 19 Units	45	1.3%	45	1.2%	47	1.2%
20 to 49 Units	65	1.9%	66	1.7%	67	1.6%
50 or More Units	50	1.5%	51	1.3%	51	1.2%
Mobile Home or Trailer	399	11.8%	448	11.9%	496	12.0%
Other Structure	-	-	-	-	-	-
Homes Built By Year (2010)						
Homes Built 2005 or later	97	2.9%	127	3.4%	151	3.7%
Homes Built 2000 to 2004	135	4.0%	161	4.3%	182	4.4%
Homes Built 1990 to 1999	292	8.6%	349	9.3%	399	9.7%
Homes Built 1980 to 1989	408	12.1%	449	12.0%	485	11.8%
Homes Built 1970 to 1979	538	15.9%	597	15.9%	655	15.9%
Homes Built 1960 to 1969	229	6.8%	249	6.6%	273	6.6%
Homes Built 1950 to 1959	431	12.7%	460	12.3%	496	12.0%
Homes Built Before 1949	1,254	37.1%	1,362	36.3%	1,479	35.9%
Home Values (2010)						
Home Values \$1,000,000 or More	14	0.6%	22	0.8%	31	1.1%
Home Values \$500,000 to \$999,999	39	1.7%	65	2.4%	87	2.9%
Home Values \$400,000 to \$499,999	31	1.3%	47	1.8%	61	2.0%
Home Values \$300,000 to \$399,999	135	5.7%	181	6.8%	214	7.2%
Home Values \$200,000 to \$299,999	284	12.0%	340	12.7%	388	13.1%
Home Values \$150,000 to \$199,999	436	18.4%	463	17.3%	491	16.6%
Home Values \$100,000 to \$149,999	407	17.2%	430	16.1%	456	15.4%
Home Values \$70,000 to \$99,999	526	22.2%	568	21.2%	610	20.6%
Home Values \$50,000 to \$69,999	206	8.7%	228	8.5%	255	8.6%
Home Values \$25,000 to \$49,999	126	5.3%	145	5.4%	167	5.6%
Home Values Under \$25,000	166	7.0%	183	6.9%	206	6.9%
Owner-Occupied Median Home Value	\$124,374		\$132,262		\$135,251	
Renter-Occupied Median Rent	\$427		\$434		\$437	
Transportation To Work (2010)						
Drive to Work Alone	2,648	79.8%	3,035	79.9%	3,376	79.6%
Drive to Work in Carpool	260	7.8%	299	7.9%	331	7.8%
Travel to Work by Public Transportation	7	0.2%	8	0.2%	8	0.2%
Drive to Work on Motorcycle	-	-	-	-	-	-
Walk or Bicycle to Work	209	6.3%	221	5.8%	242	5.7%
Other Means	62	1.9%	63	1.7%	64	1.5%
Work at Home	133	4.0%	171	4.5%	217	5.1%
Travel Time (2010)						
Travel to Work in 14 Minutes or Less	2,419	75.9%	2,666	73.5%	2,889	71.8%
Travel to Work in 15 to 29 Minutes	472	14.8%	581	16.0%	672	16.7%
Travel to Work in 30 to 59 Minutes	189	5.9%	251	6.9%	314	7.8%
Travel to Work in 60 Minutes or More	107	3.4%	127	3.5%	147	3.6%
Average Minutes Travel to Work	8.8		9.3		9.7	

This report was produced using data from private and government sources deemed to be reliable. The information herein is provided without representation or warranty.