

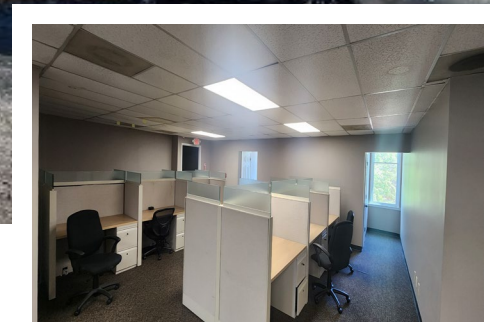
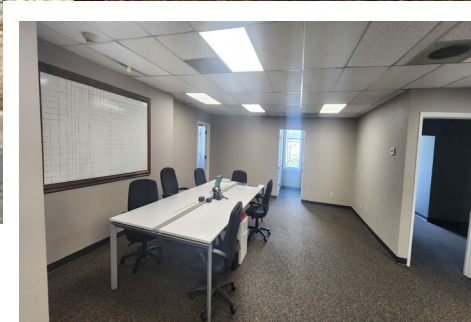
OFFICE FOR LEASE

2ND Floor

±2,500 SF

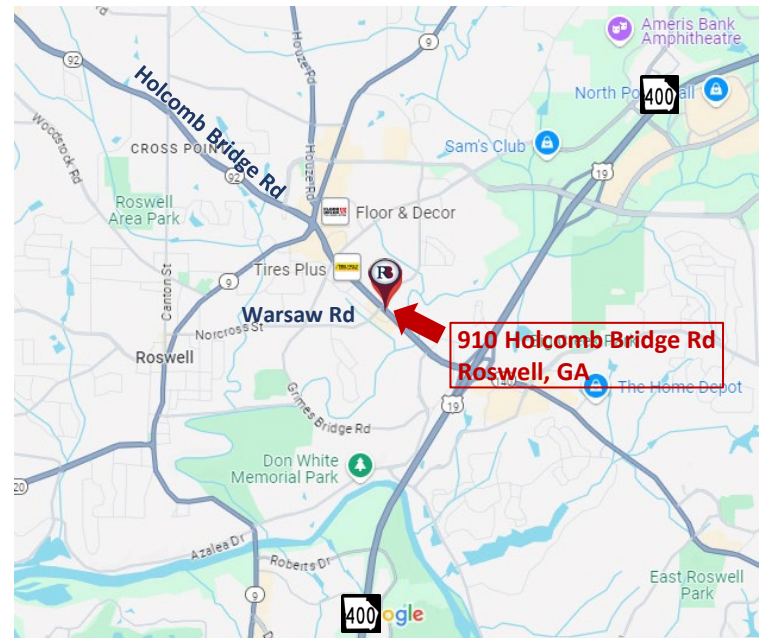
910 Holcomb Road

Roswell, GA 30076



PROPERTY HIGHLIGHTS

- ✓ Approx. 2,500 SF Office Space
- ✓ **Available Now!** Move-in Ready
- ✓ Rate: \$16.00 PSF
- ✓ 2-story Brick Building, **Elevator Served**
- ✓ Break Room & Some Furniture Included
- ✓ Parking: 54 Surface Spaces
- ✓ Highly Visible
- ✓ Signage: Corner of Holcomb Bridge & Warsaw Road
- ✓ Excellent Roswell Amenities, Perfect for Expanding Companies



Richard Bowers & Co.
260 Peachtree Street | Suite 2400
Atlanta, GA 30303
(404) 816-1600
www.richardbowers.com



For More Information contact:

Jeff McMullen, VP
o) 404- 816-1600 Ext. 145
m) 770-380-6538
jmcmullen@richardbowers.com

Dave Morgan, VP
o) 404- 816-1600 ext. 119
m) 404-310-7643
dmorgan@richardbowers.com

OFFICE FOR LEASE

2ND Floor

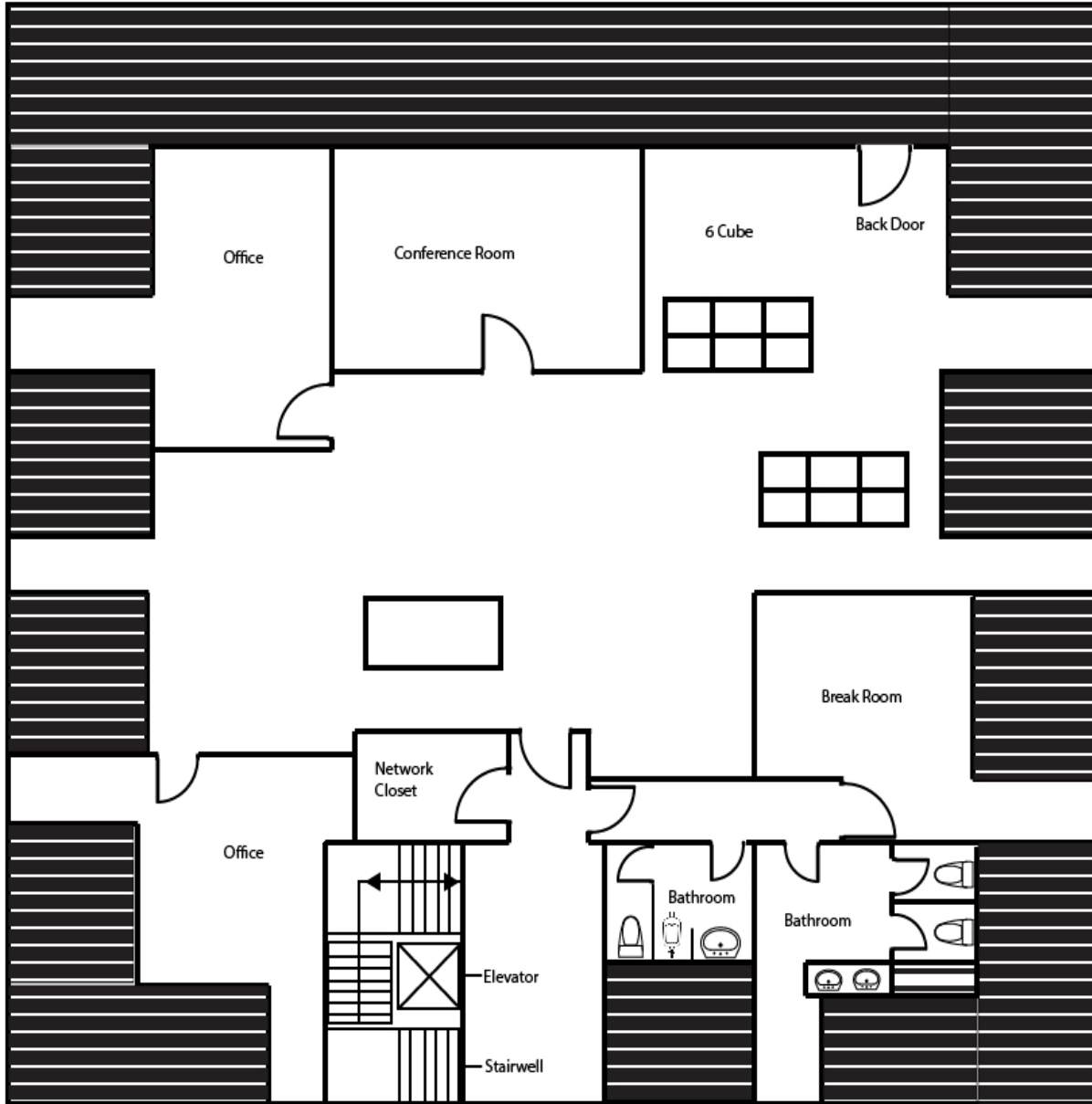
±2,500 SF

910 Holcomb Road

Roswell, GA 30076

FLOOR PLAN

±2,500 sf



LEGEND



- Roofing



Richard Bowers & Co.
260 Peachtree Street | Suite 2400
Atlanta, GA 30303
(404) 816-1600
www.richardbowers.com



For More Information contact:

Jeff McMullen, VP
o) 404- 816-1600 Ext. 145
m) 770-380-6538
jmcullen@richardbowers.com

Dave Morgan, VP
o) 404- 816-1600 ext. 119
m) 404-310-7643
dmorgan@richardbowers.com