

For Lease

Industrial Property

23,412 SF | \$13.00 SF/NNN



23,412 SF Industrial Facility - Oak Ridge

100 Mecco Lane

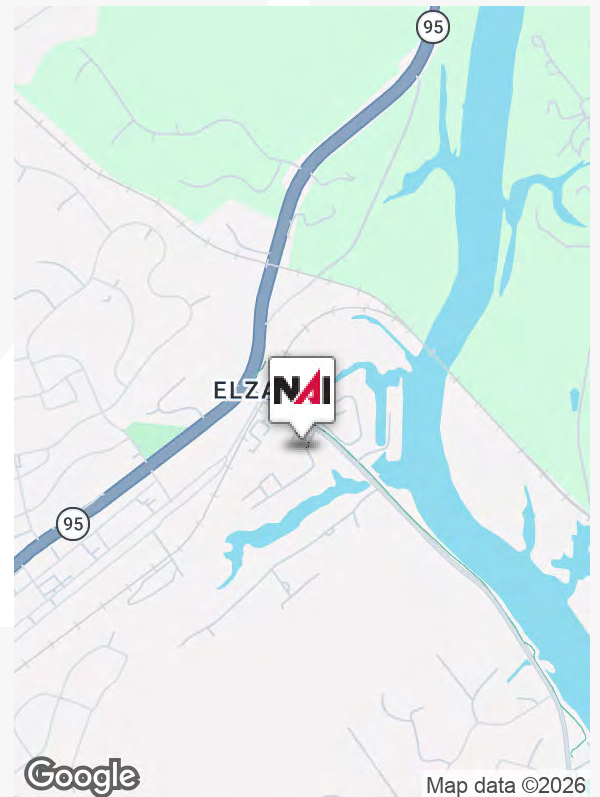
Oak Ridge, Tennessee 37830

Property Highlights

- (2) 5 ton bridge cranes (20' hook height), (1) 2 ton bridge crane
- 2000 Amp 480V electrical
- Property taxes - \$12,762
- Zoned IND-2
- 2,600 SF office, 3,946 SF outside covered storage
- 6 grade level doors, 1 dock high door (limited dock access)
- 2.88 acre lot with fenced and graveled storage yard
- 23' clear height at the eaves, 28' clear at center of bldg.
- 2000 Amp/480V electrical service
- Available 4/1/2026

Property Description

Melton Lake Industrial Park is located on the east side of Oak Ridge. The building on the subject property was built in 1975 and is designed as a steel fabrication facility.



For more information

Sam Tate, CCIM

O: 865 777 3035

state@koellamoore.com

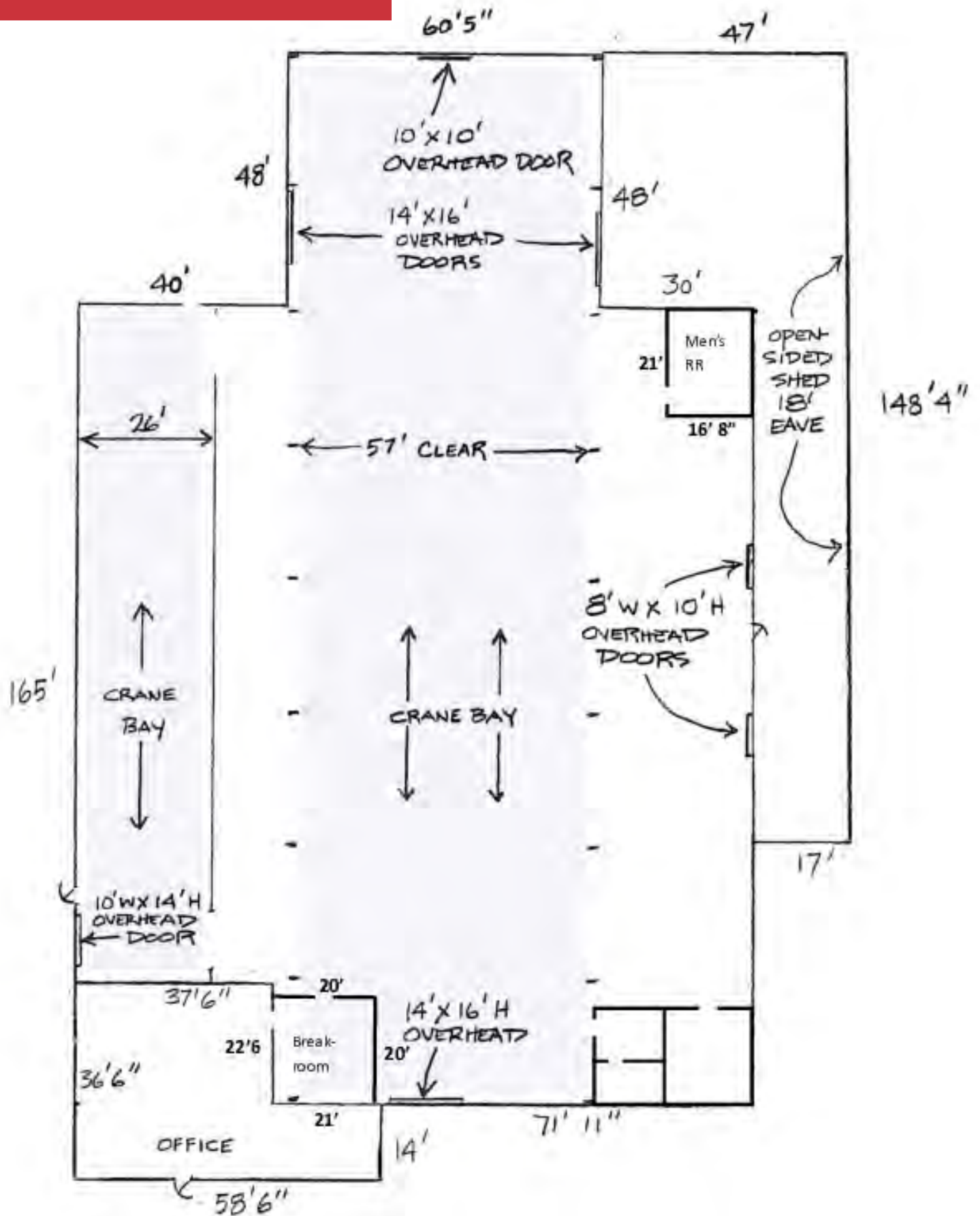
Additional Photos



Additional Photos



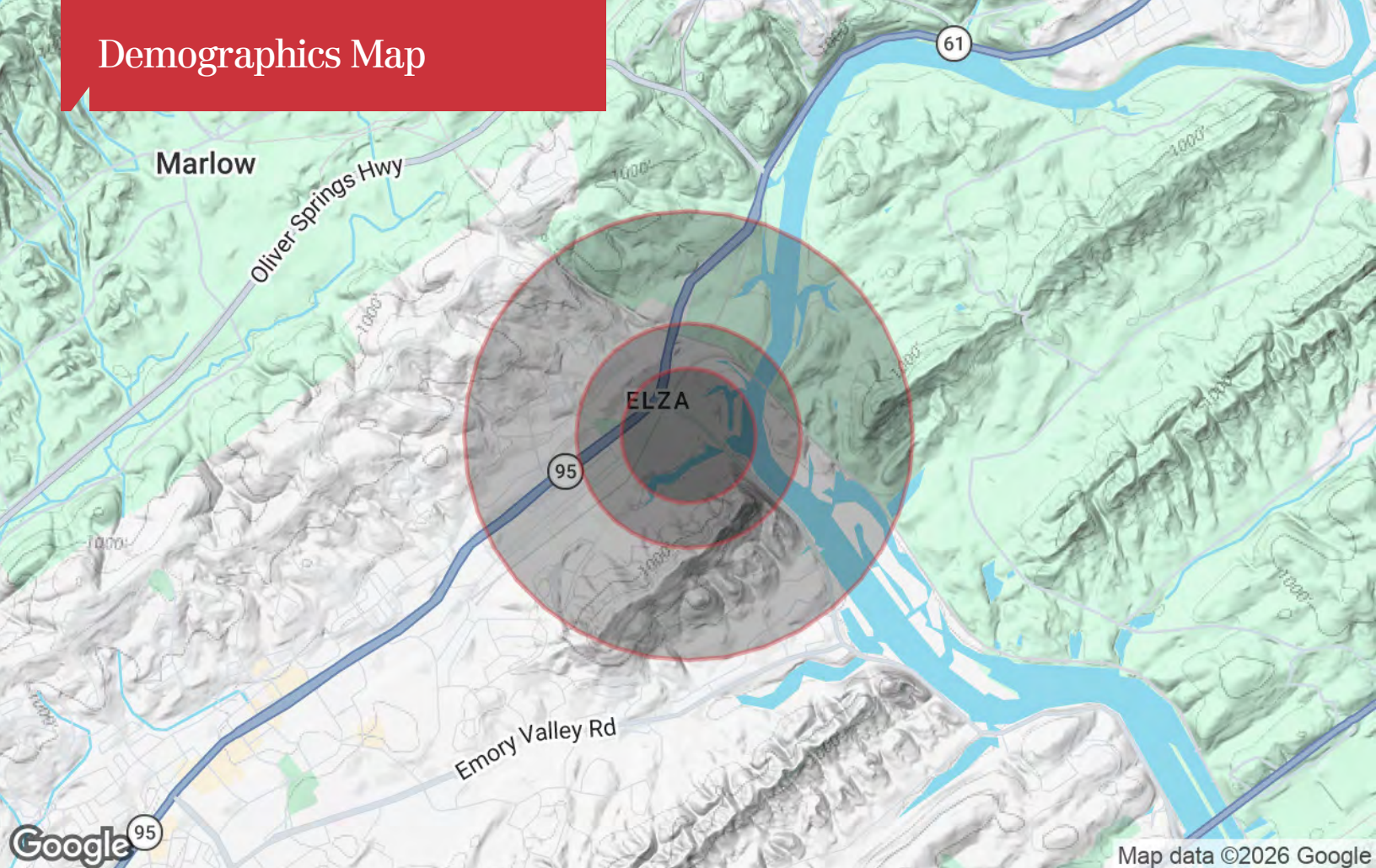
Floor Plan



Location Maps



Demographics Map



Population

	0.3 Miles	0.5 Miles	1 Mile
TOTAL POPULATION	126	515	2,682
MEDIAN AGE	48	44	43
MEDIAN AGE (MALE)	48	43	42
MEDIAN AGE (FEMALE)	48	44	44

Households & Income

	0.3 Miles	0.5 Miles	1 Mile
TOTAL HOUSEHOLDS	50	206	1,069
# OF PERSONS PER HH	2.5	2.5	2.5
AVERAGE HH INCOME	\$148,451	\$112,432	\$112,115
AVERAGE HOUSE VALUE	\$354,905	\$272,672	\$259,153

Race

	0.3 Miles	0.5 Miles	1 Mile
% WHITE	95.7%	92.9%	92.8%
% BLACK	0.9%	2.9%	3.4%
% ASIAN	1.7%	1.7%	1.3%
% HAWAIIAN	0.0%	0.0%	0.1%
% INDIAN	0.0%	0.4%	0.4%
% OTHER	1.7%	2.1%	2.1%

Ethnicity

	0.3 Miles	0.5 Miles	1 Mile
% HISPANIC	2.4%	4.3%	4.6%

* Demographic data derived from 2020 ACS - US Census