

Promenade One & Two at Eilan

17806 & 17802 Interstate 10 / San Antonio, Texas 78257



Space Highlights

- Private window & interior offices
- Conference & meeting rooms
- Break rooms & work rooms
- Storage, filing, IT, copy & mail rooms
- Executive offices
- Open workstations
- Reception areas
- Furniture negotiable

Building & Area Amenities

- 24-hour-card access
- Onsite conference & meeting facilities
- Onsite mail room
- In complex retail, fitness, salon, dentist and Hotel Eilan and Spa. Restaurants: Ruth's Chris Steak House, Piatti (Italian), Uni'Ko Japanese House; Sustenio (Southwestern)

Up to 69,086 RSF Class A Office Space Available

Bryan Sethney
Managing Director
+1 210 467 8294
bryan.sethney@cushwake.com
4040 Broadway Street, Suite 240
San Antonio, TX 78209

Scott Wegmann
Vice Chairman
+1 713 877 8261
scott.wegmann@cushwake.com
1330 Post Oak Blvd., Suite 1330
Houston, TX 77056

cushmanwakefield.com

Space Available - Promenade One

Suite 100 13,684 RSF

Suite 210A 16,007 RSF

Rental Rate:

Negotiable

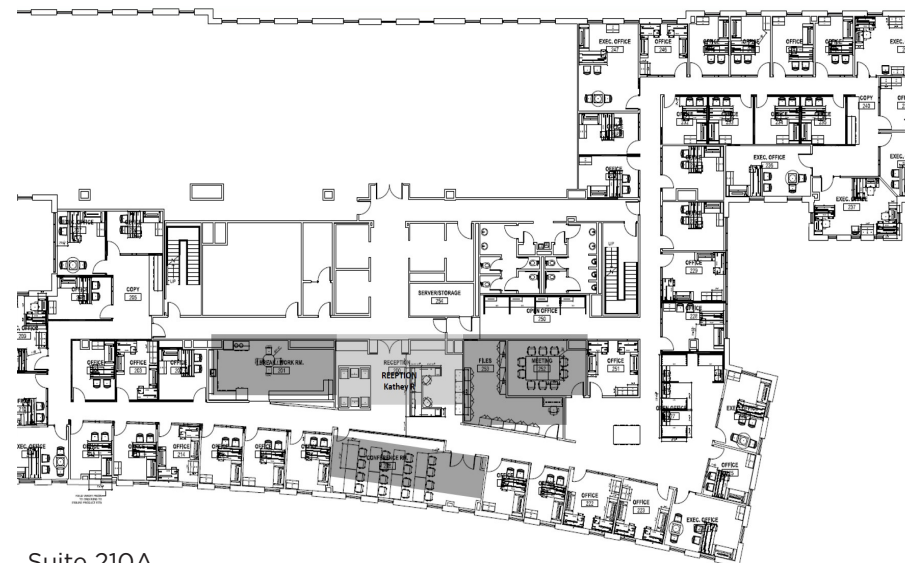
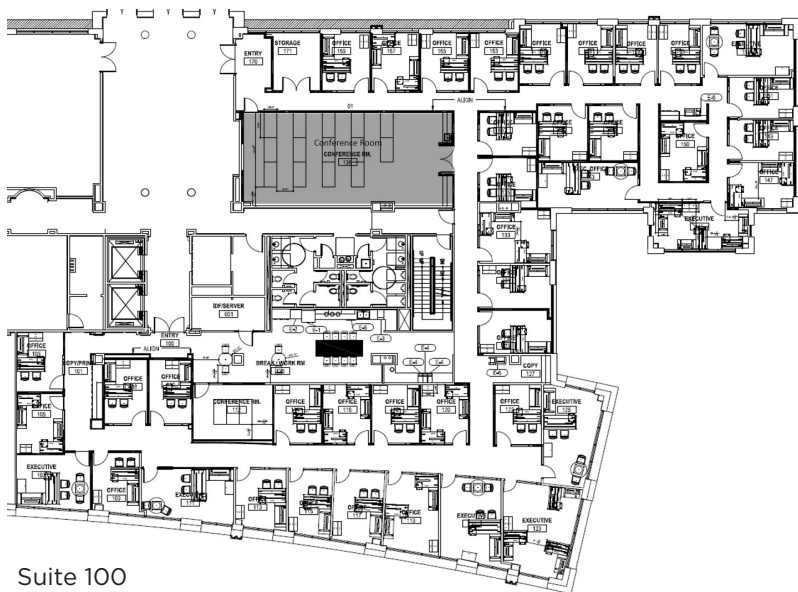
Availability:

Available through 7/30/24

2020 Estimated Opex:

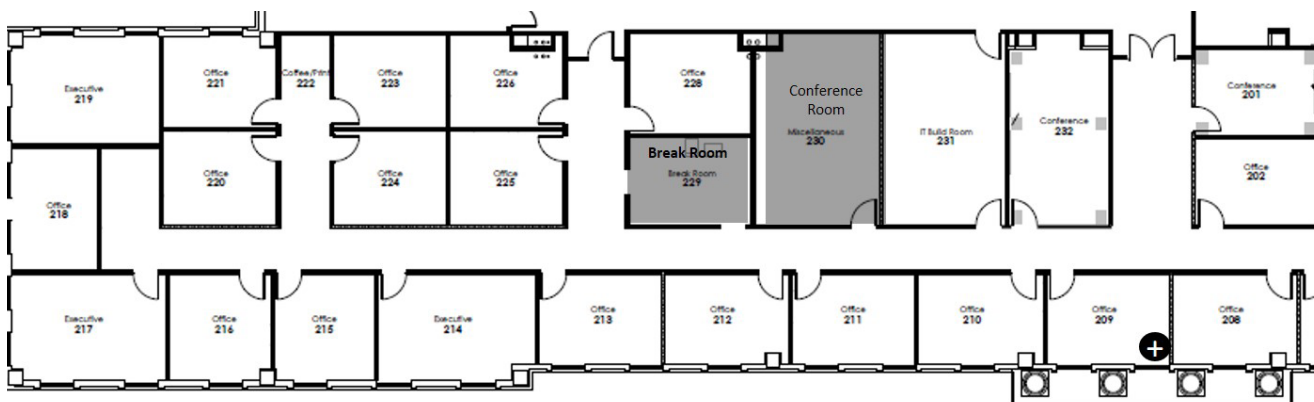
\$16.66/RSF

Total 29,691 RSF



Space Available - Promenade Two

Suite 230	11,061 RSF	Rental Rate:	Negotiable
Suite 300	28,334 RSF	Availability:	Available through 7/30/24
		2020 Estimated Opex:	\$15.68/RSF
Total		39,395 RSF	



Suite 230



Suite 300

Promenade One & Two at Eilan

17806 & 17802 Interstate 10 / San Antonio, Texas 78257



Bryan Sethney
+1 210 467 8294
bryan.sethney@cushwake.com

Scott Wegmann
+1 713 877 8261
scott.wegmann@cushwake.com

Promenade One & Two at Eilan

17806 & 17802 Interstate 10 / San Antonio, Texas 78257



Bryan Sethney
Managing Director
+1 210 467 8294
bryan.sethney@cushwake.com
4040 Broadway Street, Suite 240
San Antonio, TX 78209

Scott Wegmann
Vice Chairman
+1 713 877 8261
scott.wegmann@cushwake.com
1330 Post Oak Blvd., Suite 1330
Houston, TX 77056

cushmanwakefield.com



Promenade One & Two at Eilan

17806 & 17802 Interstate 10 / San Antonio, Texas 78257



Bryan Sethney
Managing Director
+1 210 467 8294
bryan.sethney@cushwake.com
4040 Broadway Street, Suite 240
San Antonio, TX 78209

Scott Wegmann
Vice Chairman
+1 713 877 8261
scott.wegmann@cushwake.com
1330 Post Oak Blvd., Suite 1330
Houston, TX 77056

cushmanwakefield.com