

# FOR LEASE

Office Space

916 Bryan Ave.

Fort Worth, TX, 76104



Tim Coker  
tim@hatfieldadvisors.com  
(214)683-1330

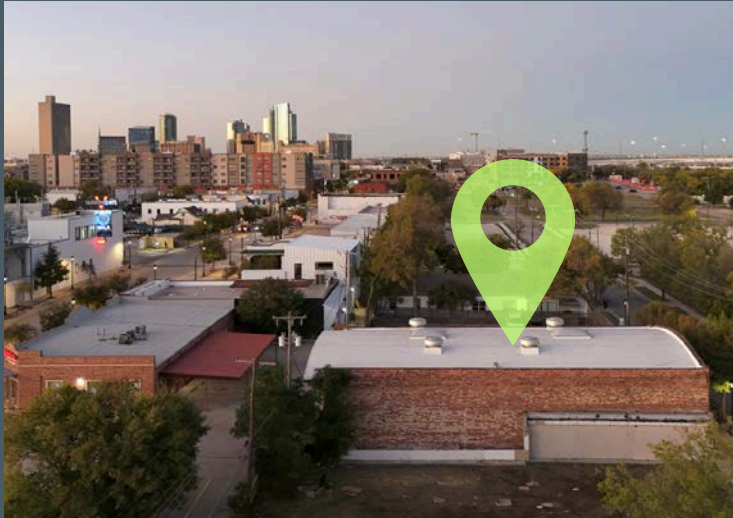


Dak Hatfield, CCIM, PMP  
dak@hatfieldadvisors.com  
(817)239-9701

# OFFICE FOR LEASE

916 Bryan Ave.  
Fort Worth, TX  
76104

Located in the the Near Southside



## Proximity to Hospitals

- Baylor Scott & White All Saints Medical Center
- Texas Health Harris Methodist Hospital
- JPS Health Network
- Cook Children's Medical Center
- UTSW Hospital

## Nearby Restaurants

- Coco Shrimp - 0.4 miles
- Panther City BBQ - 0.2 miles
- Wishbone & Flint - 0.4 miles
- Brix BBQ - 0.1 miles
- Pouring Glory - 0.1 miles

## Nearby Coffee Shops

- Summer Moon Coffee - 0.3 miles
- Brewed - 0.7 miles
- Avoca Coffee Roasters - 1.2 miles



Tim Coker

 [tim@hatfieldadvisors.com](mailto:tim@hatfieldadvisors.com)  
 (214)683-1330

Dak Hatfield, CCIM, PMP

 [dak@hatfieldadvisors.com](mailto:dak@hatfieldadvisors.com)  
 (817)239-9701

## OFFICE FOR LEASE

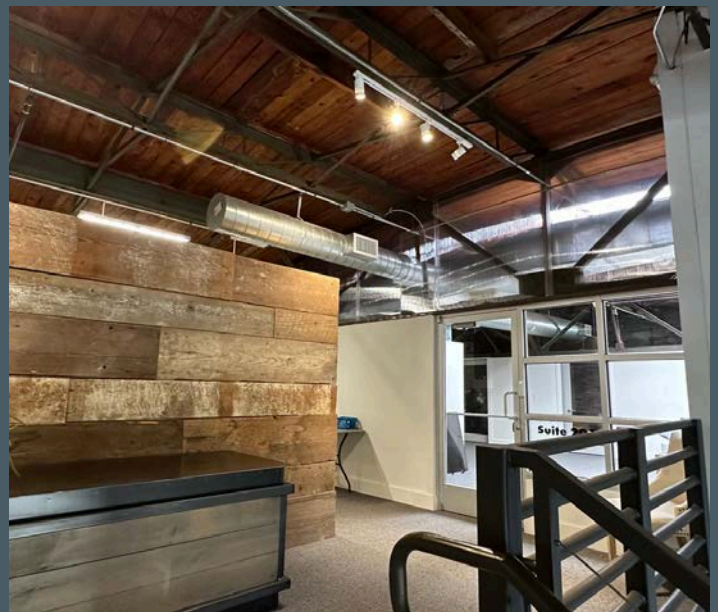
916 Bryan Ave.  
Fort Worth, TX  
76104

## INTERIOR



## BUILDING FEATURES

- Creative office space
- Suite 201
- 2132 SF
- 5 dedicated offices
- Conference room



Tim Coker  
tim@hatfieldadvisors.com  
(214)683-1330

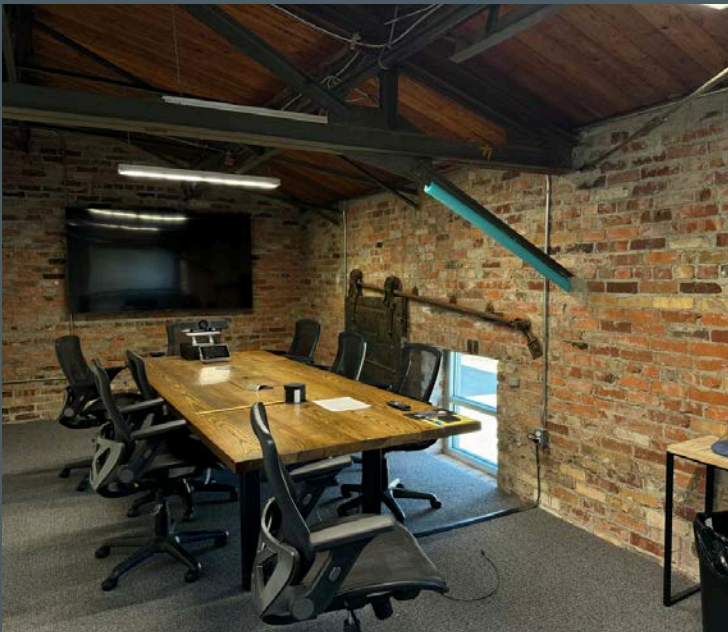
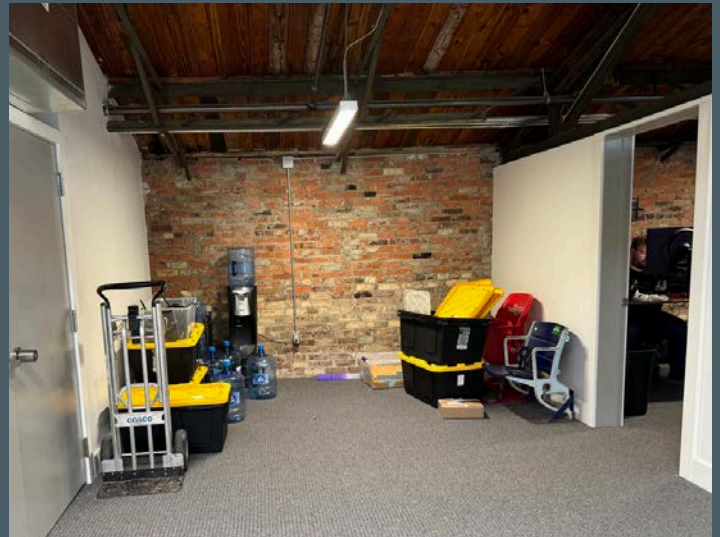


Dak Hatfield, CCIM, PMP  
dak@hatfieldadvisors.com  
(817)239-9701

# OFFICE FOR LEASE

916 Bryan Ave.  
Fort Worth, TX  
76104

## INTERIOR



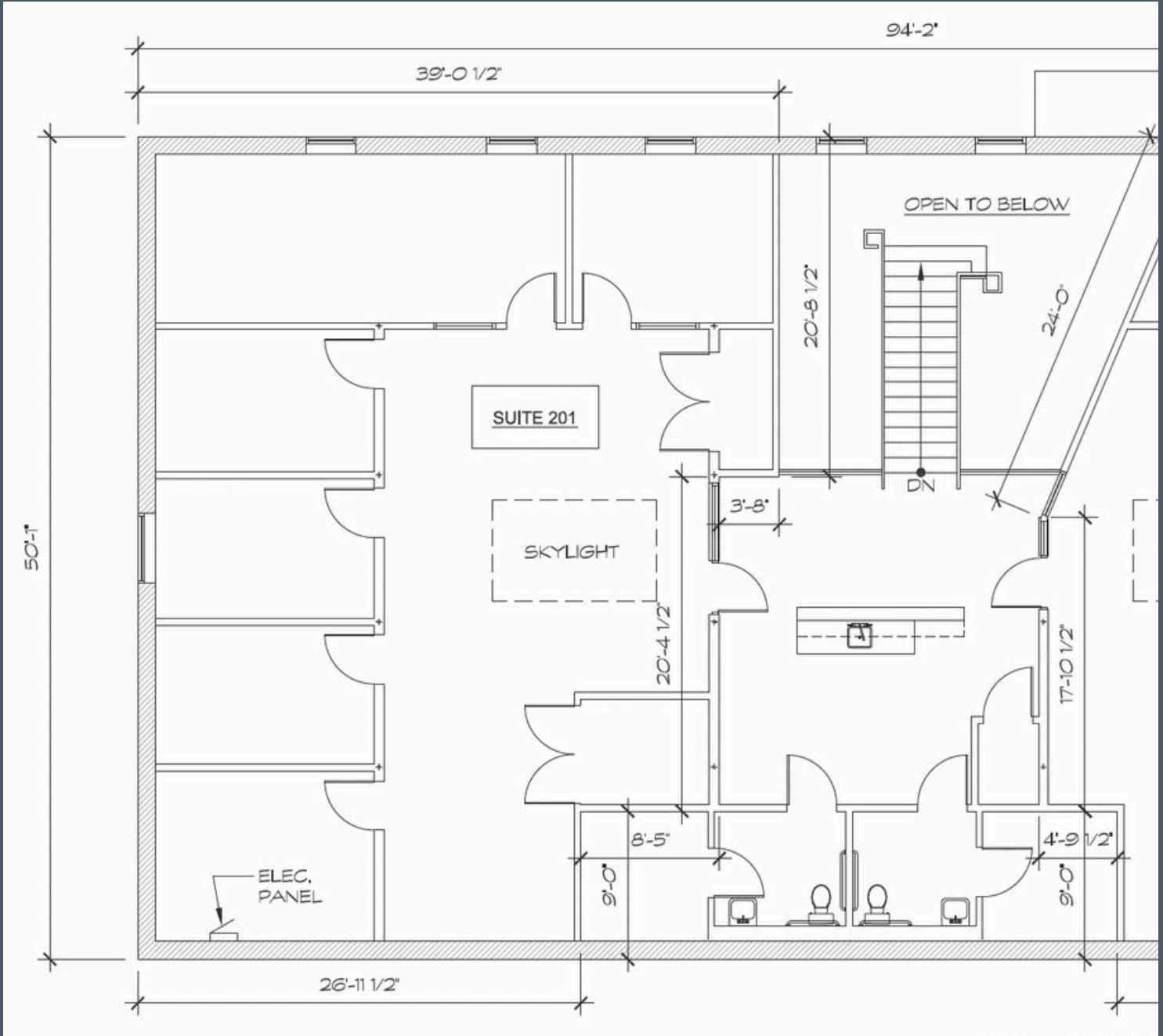
Tim Coker  
tim@hatfieldadvisors.com  
(214)683-1330

Dak Hatfield, CCIM, PMP  
dak@hatfieldadvisors.com  
(817)239-9701

# OFFICE FOR LEASE

916 Bryan Ave.  
Fort Worth, TX  
76104

## FLOOR PLAN



Tim Coker  
tim@hatfieldadvisors.com  
(214)683-1330



Dak Hatfield, CCIM, PMP  
dak@hatfieldadvisors.com  
(817)239-9701



[WWW.HATFIELDADVISORS.COM](http://WWW.HATFIELDADVISORS.COM)

BOUTIQUE ADVISORY, STRATEGY  
AND BROKERAGE COMMERCIAL  
REAL ESTATE FIRM SINCE 2005.