



4569 WHITTIER BLVD, EAST LOS ANGELES, CA 90022

STOREFRONT RETAIL



FOR SALE

OFFERING MEMORANDUM



● SITE DESCRIPTION

IKON Properties is proud to present 4569 Whittier Boulevard, East Los Angeles, CA 90022. This standalone retail property offers approximately 2,751 square feet of building space on a 6,421-square-foot lot, providing an excellent opportunity for businesses seeking visibility in a bustling commercial corridor.

Strategically located along Whittier Boulevard—a major thoroughfare with heavy daily traffic—this property boasts 42 feet of street frontage, enhancing its exposure to both vehicular and pedestrian traffic. The site is zoned LCM1, allowing for a mix of commercial, office, and residential uses, offering flexibility for various business models.

Built in 1922, the property maintains its historical charm while serving modern business needs. Its proximity to major freeways, including the I-710 and I-5, ensures easy accessibility for customers and employees alike.



PROPERTY HIGHLIGHTS

- Excellent opportunity for Owner-user/investor
- Prime retail storefront with 42 feet of frontage on bustling Whittier Boulevard
- Approximately 2,751 SF of building space on a 6,421 SF lot.
- Zoned LCM1, allowing for commercial, office, and residential mixed-use.
- Located in a high-traffic area with easy access to the 710 and 60 freeways.
- Situated in a vibrant commercial district with strong foot traffic and nearby public transit.

PROPERTY TYPE
Storefront Retail

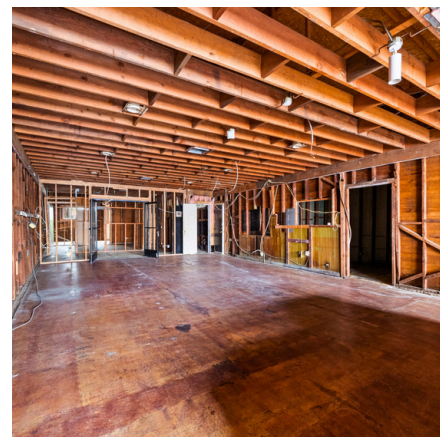
BUILDING
2,751 SF

LOT
6,421SF

YEAR BUILT
1922

ZONING
LCM1

PROPERTY PHOTOS

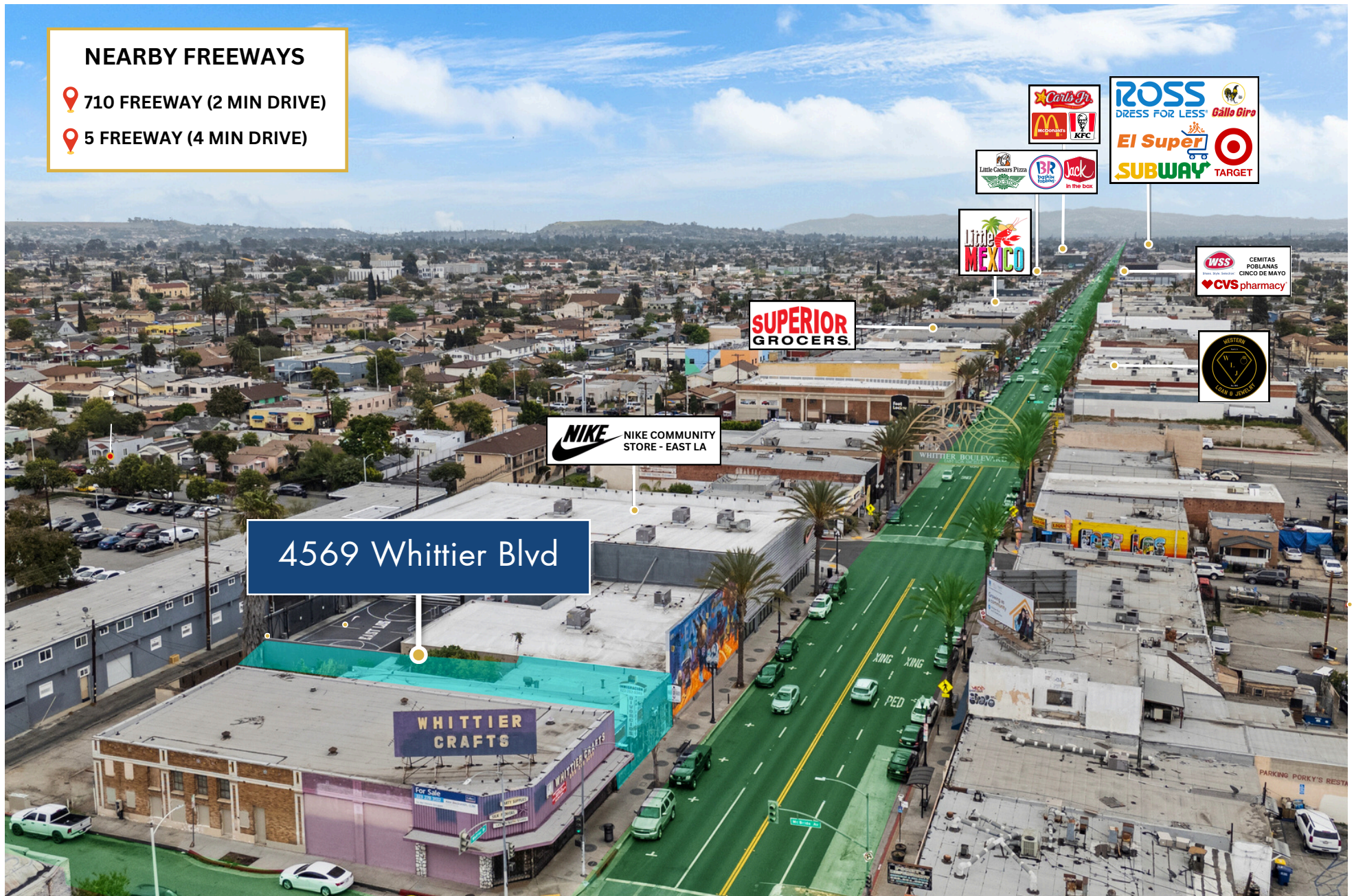


RETAIL MAP

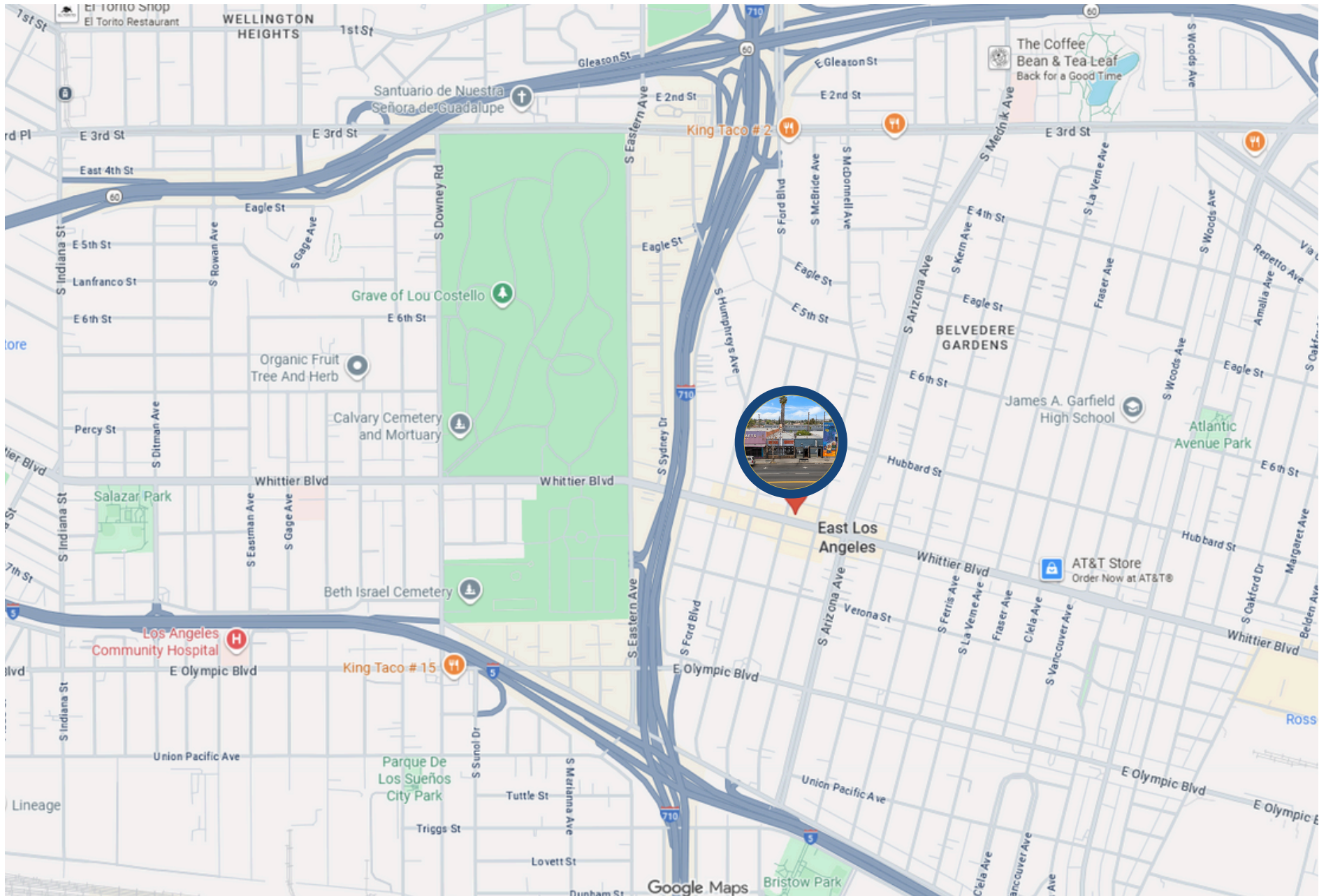
NEARBY FREEWAYS

📍 710 FREEWAY (2 MIN DRIVE)

📍 5 FREEWAY (4 MIN DRIVE)



LOCATION MAP





Category	1 Mile	3 Mile	5 Mile
2024 Total Population	38,611	241,381	693,299
2029 Population	35,597	227,501	654,944
Pop Growth 2024-2029	-7.81%	-5.75%	-5.53%
Average Age	36.10	37.40	38.50
2024 Total Households	9,836	66,864	201,071
HH Growth 2024-2029	-8.42%	-6.12%	-5.76%
Median Household Income	\$54,794	\$59,798	\$59,300
Avg Household Size	3.80	3.50	3.30
2024 Avg HH Vehicles	2	2	2
Median Home Value	\$597,371	\$659,388	\$677,391
Median Year Built	1948	1950	1955



The information contained in the following listing is proprietary and strictly confidential. It is intended to be reviewed only by the party receiving it from Equity Union Commercial and it should not be made available to any other person or entity without the written consent of Equity Union Commercial. By taking possession of and reviewing the information contained herein the recipient agrees to hold and treat all such information in the strictest confidence. The recipient further agrees that the recipient will not photocopy or duplicate any part of the email content. If you have no interest in the subject property, please promptly delete this email. This email has been prepared to provide summary, unverified financial and physical information to prospective purchasers, and to establish only a preliminary level of interest in the subject property. The information contained herein is not a substitute for a thorough due diligence investigation. Equity Union Commercial has not made any investigation, and makes no warranty or representation with respect to the income or expenses for the subject property, the future projected financial performance of the property, the size and square footage of the property and improvements, the presence or absence of contaminating substances, PCBs or asbestos, the compliance with local, state and federal regulations, the physical condition of the improvements thereon, or financial condition or business prospects of any tenant, or any tenant's plans or intentions to continue its occupancy of the subject property. The information contained in this offering memorandum has been obtained from sources we believe we believe reliable; however, Equity Union Commercial has not verified, and will not verify, any of the information contained herein, nor has Equity Union Commercial conducted any investigation regarding these matters and makes no warranty or representation whatsoever regarding the accuracy or completeness of the information provided. All potential buyers must take appropriate measures to verify all of the information set forth herein. Prospective buyers shall be responsible for their costs and expenses of investigating the subject property. verified,





BLAS FERNANDEZ
DIRECTOR, COMMERCIAL INVESTMENTS

818.319.9191
blas@ikonpropertiesla.com
ikonpropertiesla.com
LIC NO. 02012036



BRIAN VU
INVESTMENT ASSOCIATE

818.913.8819
brian@ikonpropertiesla.com
ikonpropertiesla.com
LIC NO. 02181861

