



Miracle Mile Retail Opportunity

1536 Northern Blvd, Manhasset





Key Details

Size: 1,500 sqft

Dimensions: 20ft Frontage x 75ft Depth

Lease Type: NNN - Price upon request

Parking: Approximately 53 parking stalls + 2 Handicapped

Zoning: Town of North Hempstead - Business A

Utilities: All separately metered

Ceiling Height: 10ft to drop ceiling

Electric: 400 amps - 3 phase

HVAC: 2 Zones

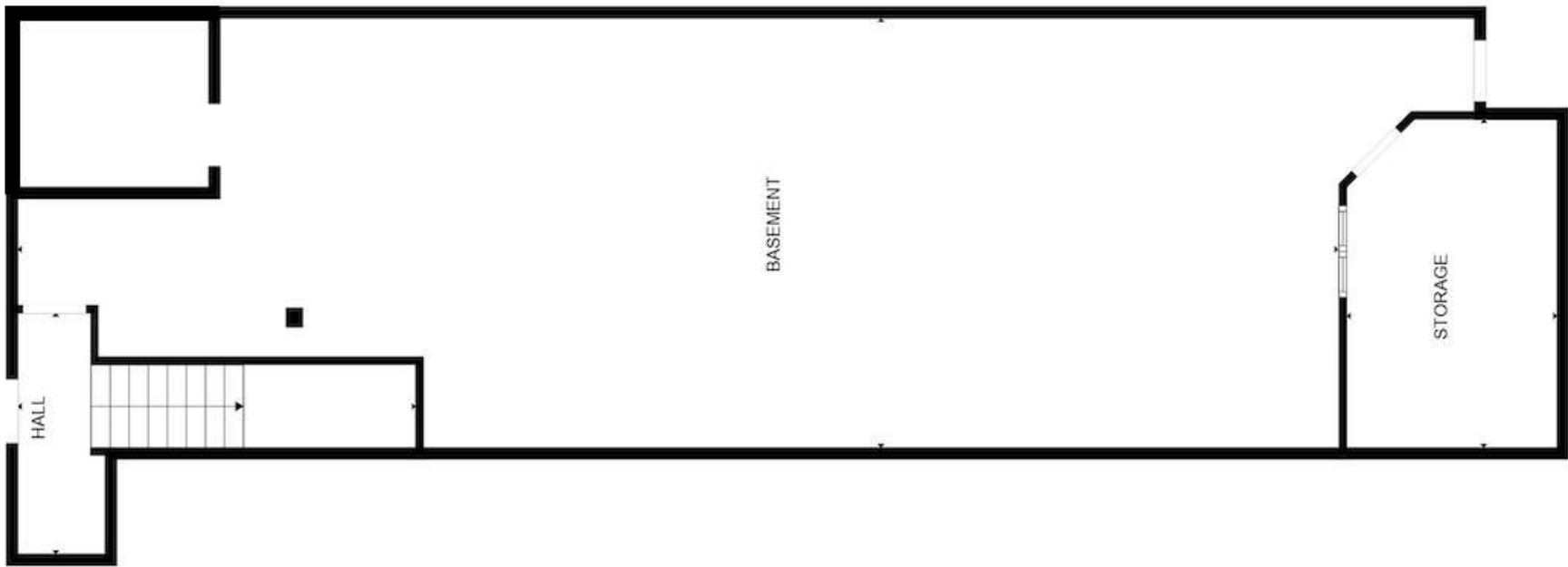
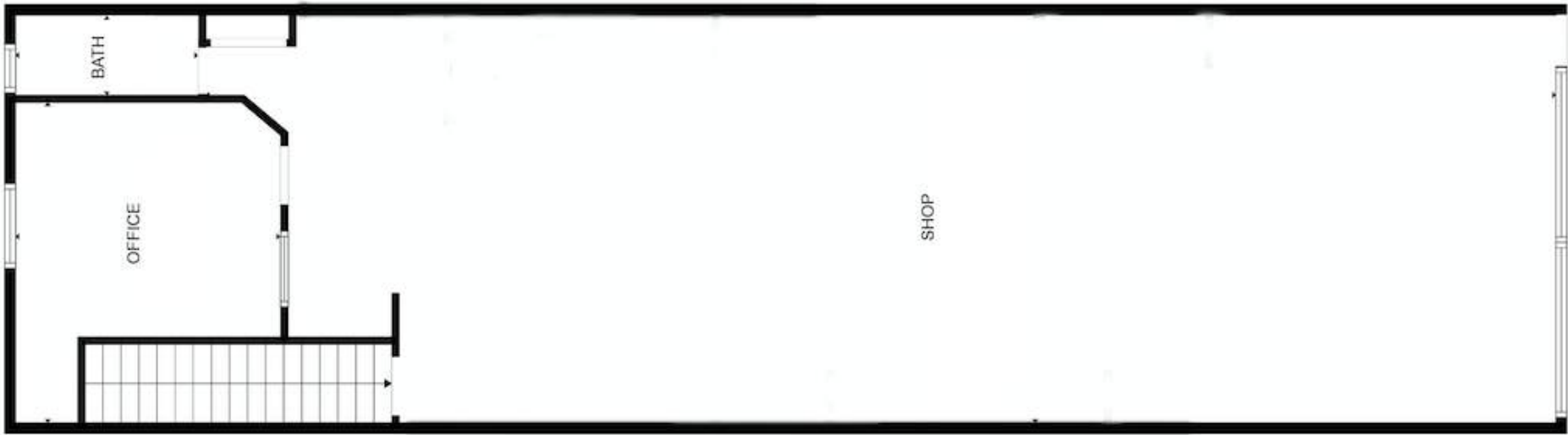
Traffic: 29,661 VPD

Demographics:	2 Mile	5 Mile	10 Mile
2023 Population:	44,165	367,052	2,460,119
2023 Households:	16,176	133,429	841,718
AVG HH Income:	\$182,632	\$149,901	\$112,495
Median Age:	45.5 yrs	45.2 yrs	42.5 yrs

COMPASS COMMERCIAL



Disclaimer: Any information set-forth herein has been obtained from sources deemed reliable, however, we have not verified it, and make no representation or warranty of any kind, including with-out limitation: condition: either latent or patent, income, expenses, size or manner of construction of the property, compliance with local law and environmental conditions. All information submitted herein is subject to errors and omissions, and the right of our principal(s), to withdraw, modify, or condition the listing without prior notice.
THE PROSPECTIVE BUYER OR TENANT SHOULD CAREFULLY VERIFY EACH ITEM OF INCOME, AND ALL OTHER INFORMATION HEREIN





Chris K. Pappas

VP of Commercial Services
Lic. Assoc. R.E. Broker
M: 516.659.6508
O: 516.427.2000
chris.pappas@compass.com



Compass is a licensed real estate broker. All material is intended for informational purposes only and is compiled from sources deemed reliable but is subject to errors, omissions, changes in price, condition, sale, or withdrawal without notice. No statement is made as to the accuracy of any description or measurements (including square footage). This is not intended to solicit property already listed. No financial or legal advice provided. Equal Housing Opportunity. All Coming Soon listings in NYC are simultaneously syndicated to the REBNY RLS. Photos may be virtually staged or digitally enhanced and may not reflect actual property conditions.