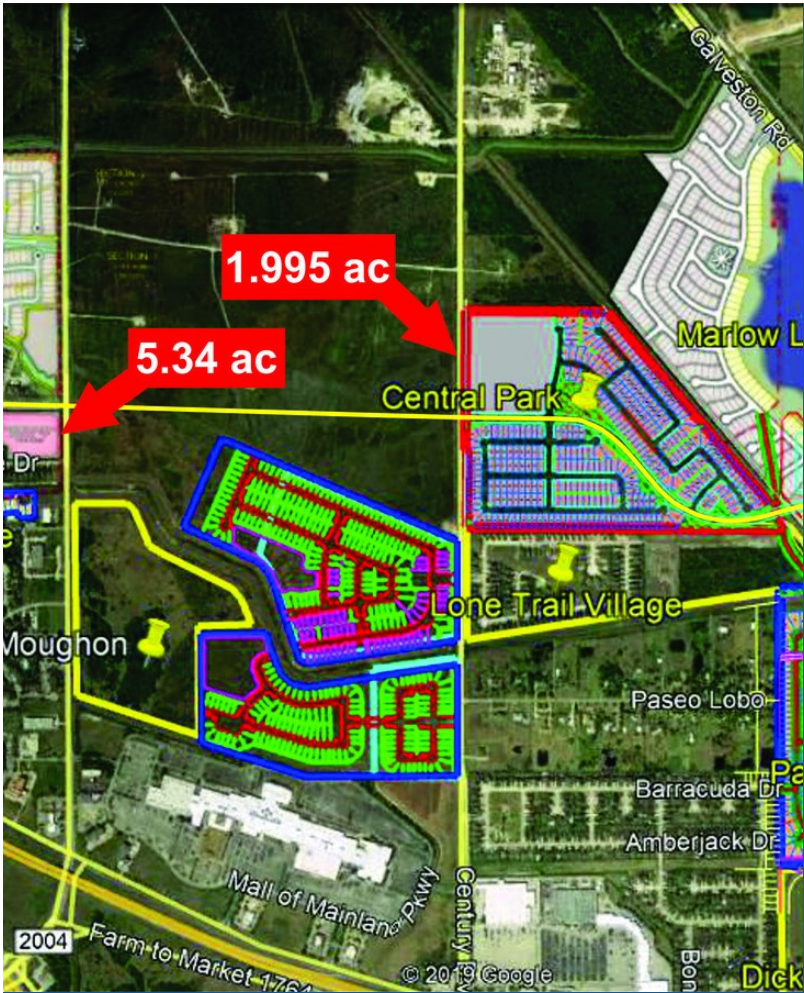


Central Park

Century Blvd, Texas City, TX 77591



Jeff George
K W Commercial
18050 Saturn Ln, Houston, TX 77058
jgeorge@kw.com
(281) 336-3121



Central Park

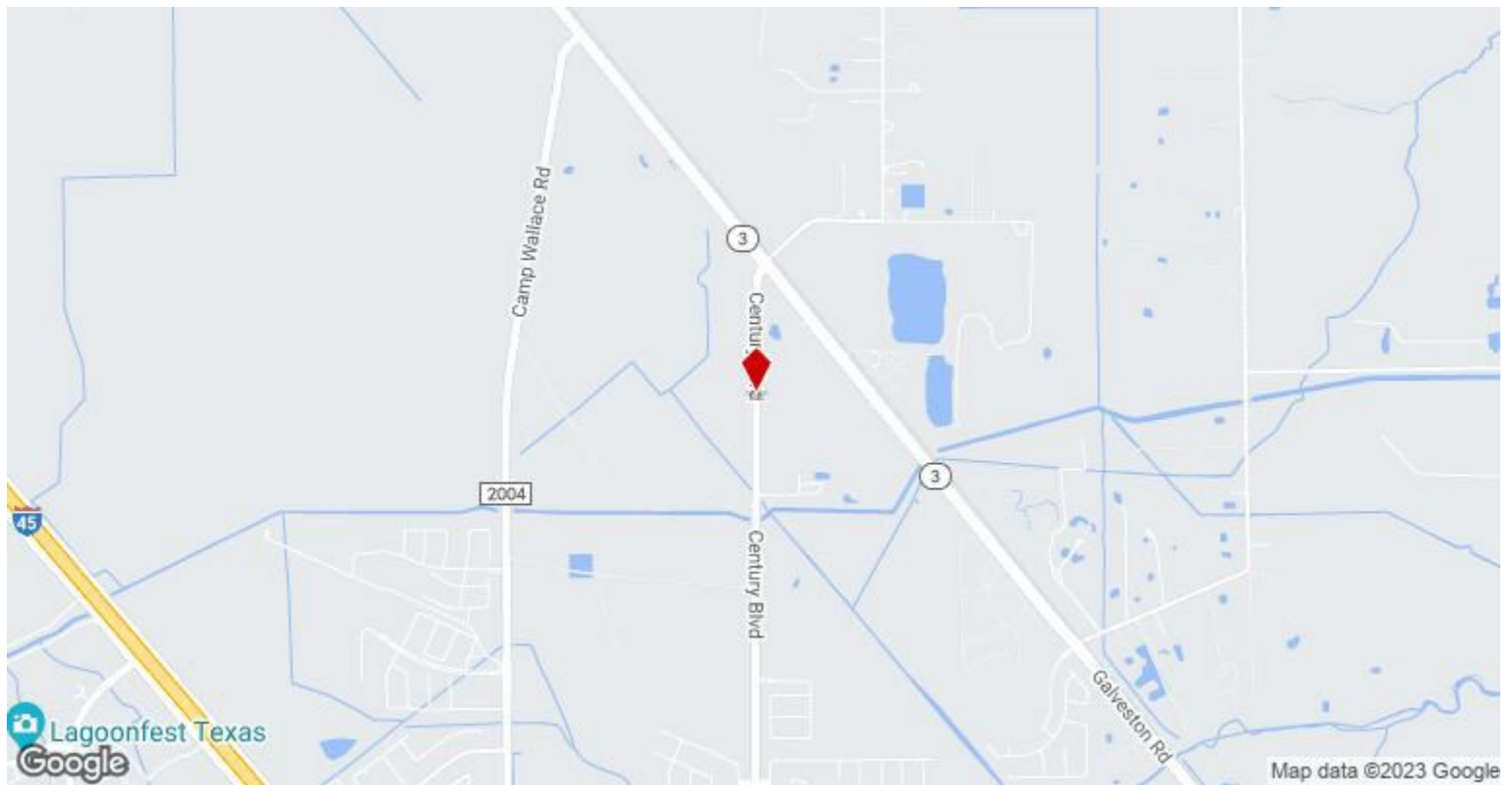
\$15.00

1.95 acre corner lot part of 8.99 acres total in 3 separate Commercial Corners (5.34 & 1.70 ac) to be located on the future Central Park Parkway extending from I-45 to Hwy 3. Lots can be sold separately or all together. Detention and fill dirt are not required, site is ready for immediate commercial development. Traffic count will increase tremendously to all sites. Price will increase as subdivision is completed and Central Parkway begins development, which is to be completed in the next 18 months according to TXDOT....

- Plug & Play
- Current Ongoing Residential Development
- Corner Lot



Price:	\$15.00
Property Type:	Land
Property Subtype:	Commercial
Proposed Use:	Office
Sale Type:	Investment or Owner User
Total Lot Size:	1.99 AC
No. Lots:	1



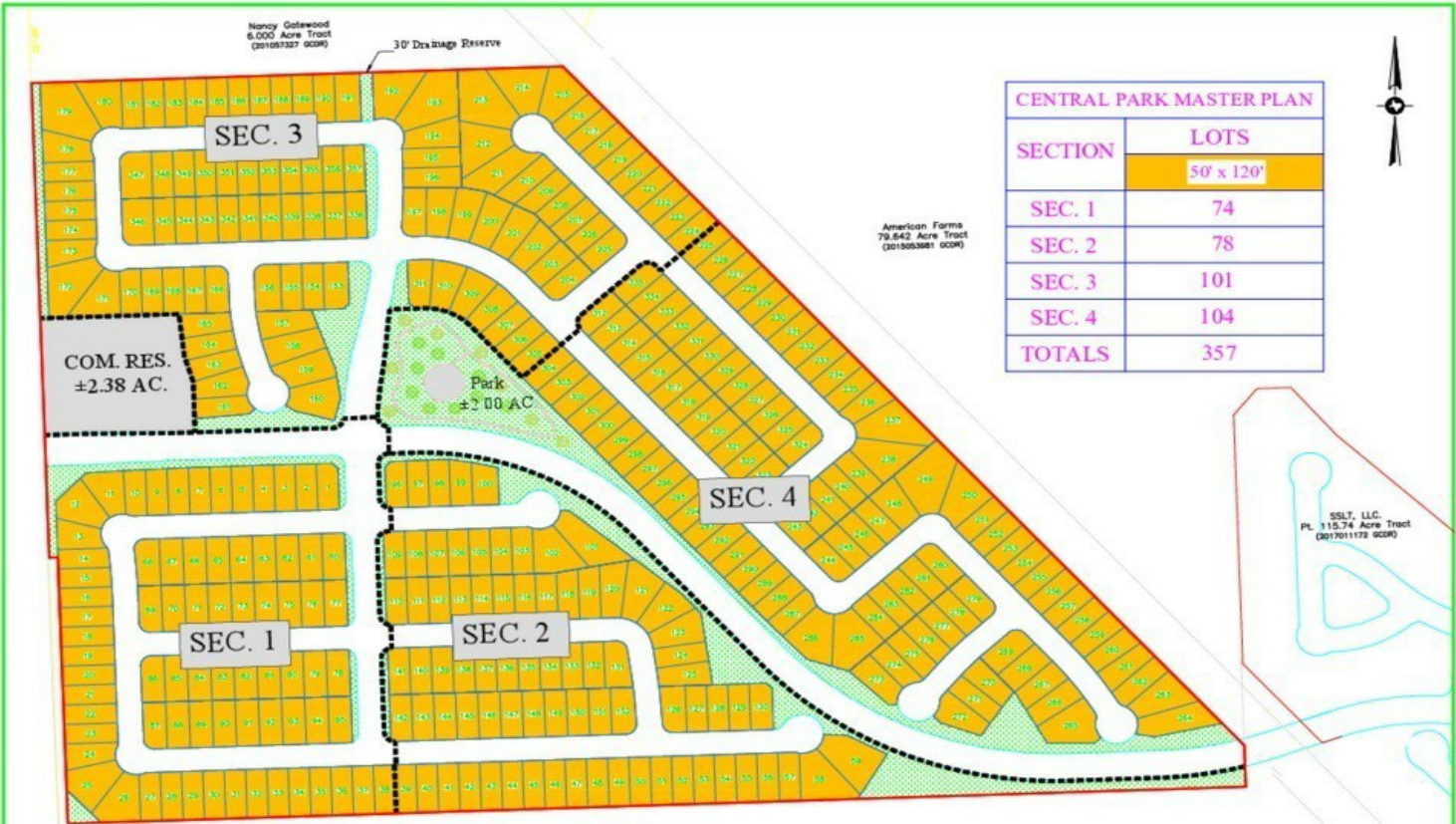
Century Blvd, Texas City, TX 77591

1.95 acre corner lot part of 8.99 acres total in 3 separate Commercial Corners (5.34 & 1.70 ac) to be located on the future Central Park Parkway extending from I-45 to Hwy 3. Lots can be sold separately or all together. Detention and fill dirt are not required, site is ready for immediate commercial development. Traffic count will increase tremendously to all sites. Price will increase as subdivision is completed and Central Parkway begins development, which is to be completed in the next 18 months according to TXDOT.

Property Photos



BeFunky-photo



Central Park Rd Tract