



QUAKERPARK

AVISON
YOUNG

BPG

UP TO 120,000 RSF AVAILABLE • CLASS A OFFICE SPACE • CONSHOHOCKEN, PA

QUAKERPARK

Welcome to a modern business environment with easy access to an unparalleled selection of restaurants, fitness, shopping and transportation options.

PROPERTY HIGHLIGHTS



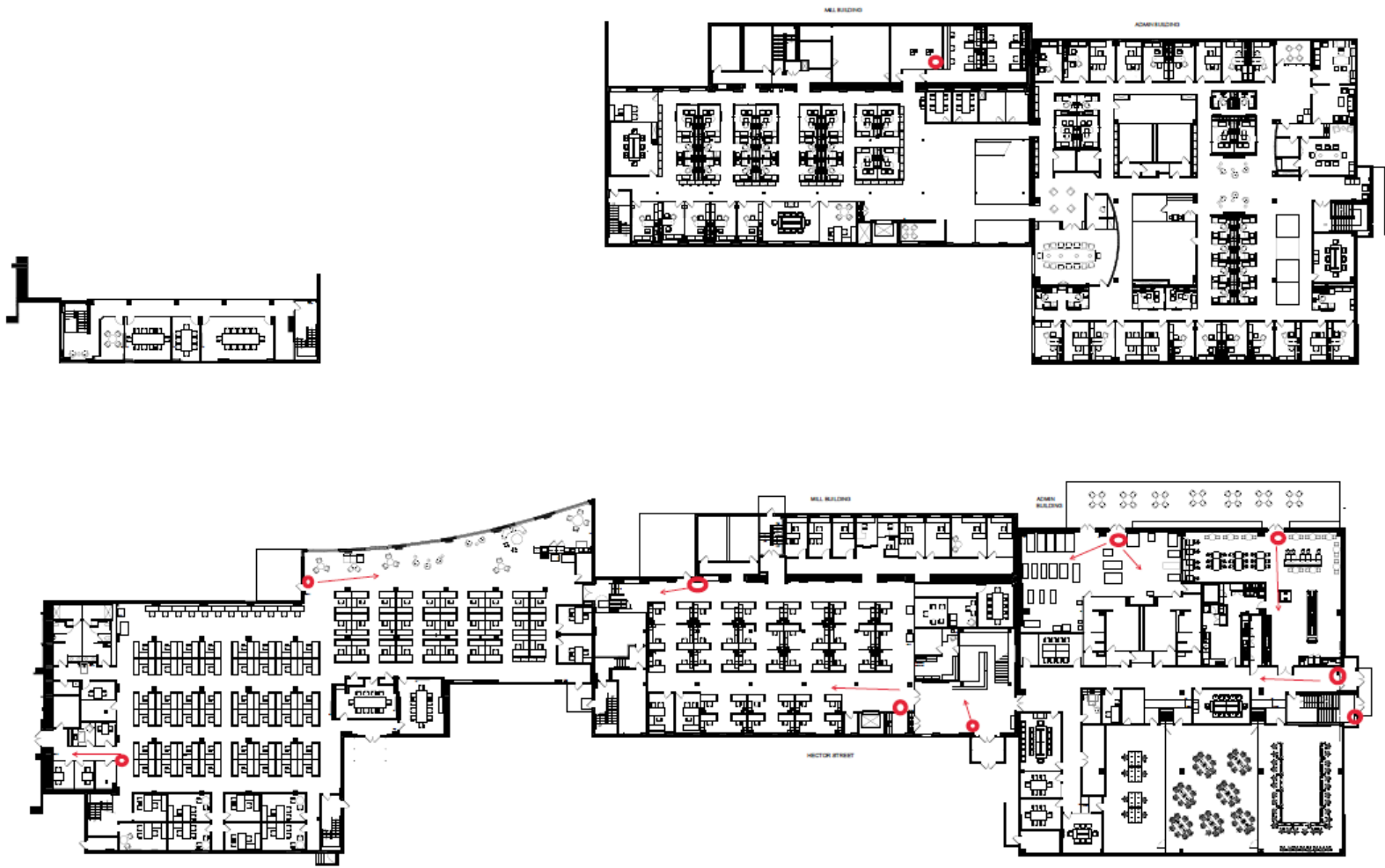
- **Location:** 1001 E Hector St, Conshohocken, PA 19428
- **Suite Availability**
 - **Top Floor:** Up to 30,000 RSF
 - **Second Floor:** 5,741 -20,000 RSF
 - **Ground Floor:** 2,500 RSF
 - **901 Building (1st & 2nd Floor):** 70,000 RSF
- **Located on the Septa R6 Rail line at the Spring Mill Station**
- **Located on the Conshohocken “rails to trails” bike path**
- **Convenient access to I-76, I-476 and the Pennsylvania Turnpike**
- **Multiple restaurants within walking distance**
- **4/1000 parking**
- **4th floor outdoor balconies overlooking the River**
- **Recently renovated lobbies and common areas**
- **Dramatic Exposed ceilings and over 10’ finished ceiling heights**



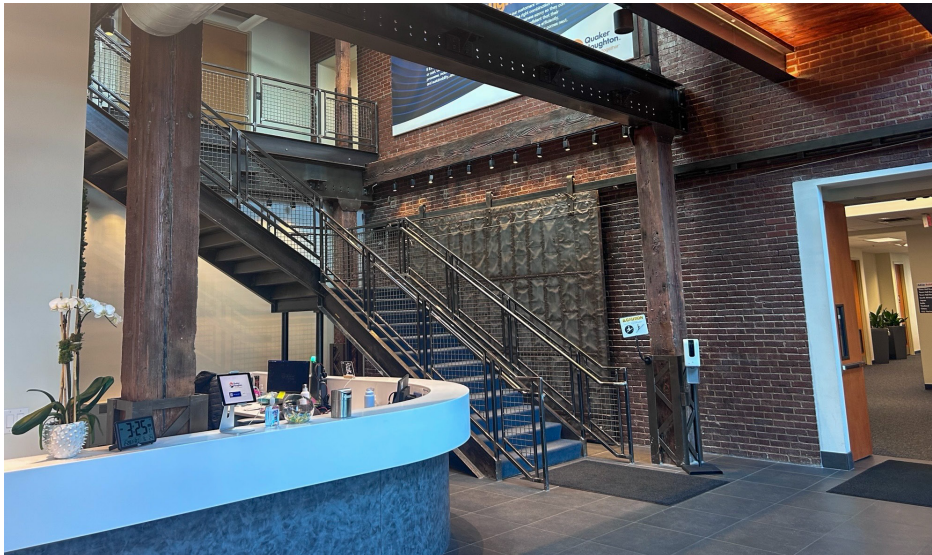
901 BUILDING



1st & 2nd Floor
70,000 SF



INTERIORS



AMENITIES MAP



LEASING CONTACTS



Ken Kearns

ken.kearns@avisonyoung.com

tel +1 610 639 1302

Brendan H. Kelley

brendan.kelley@avisonyoung.com

tel +1 215 820 3828

Visit: [avisonyoung.com](https://www.avisonyoung.com)

