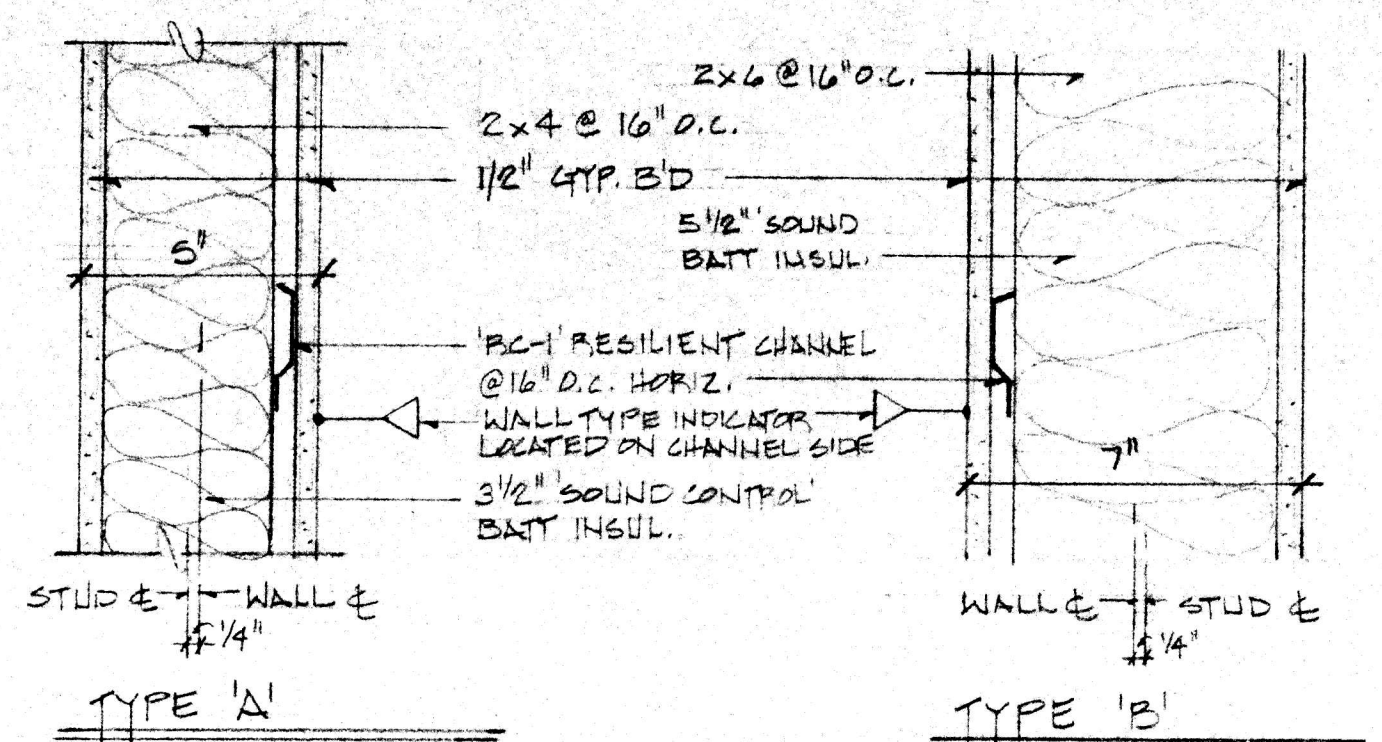
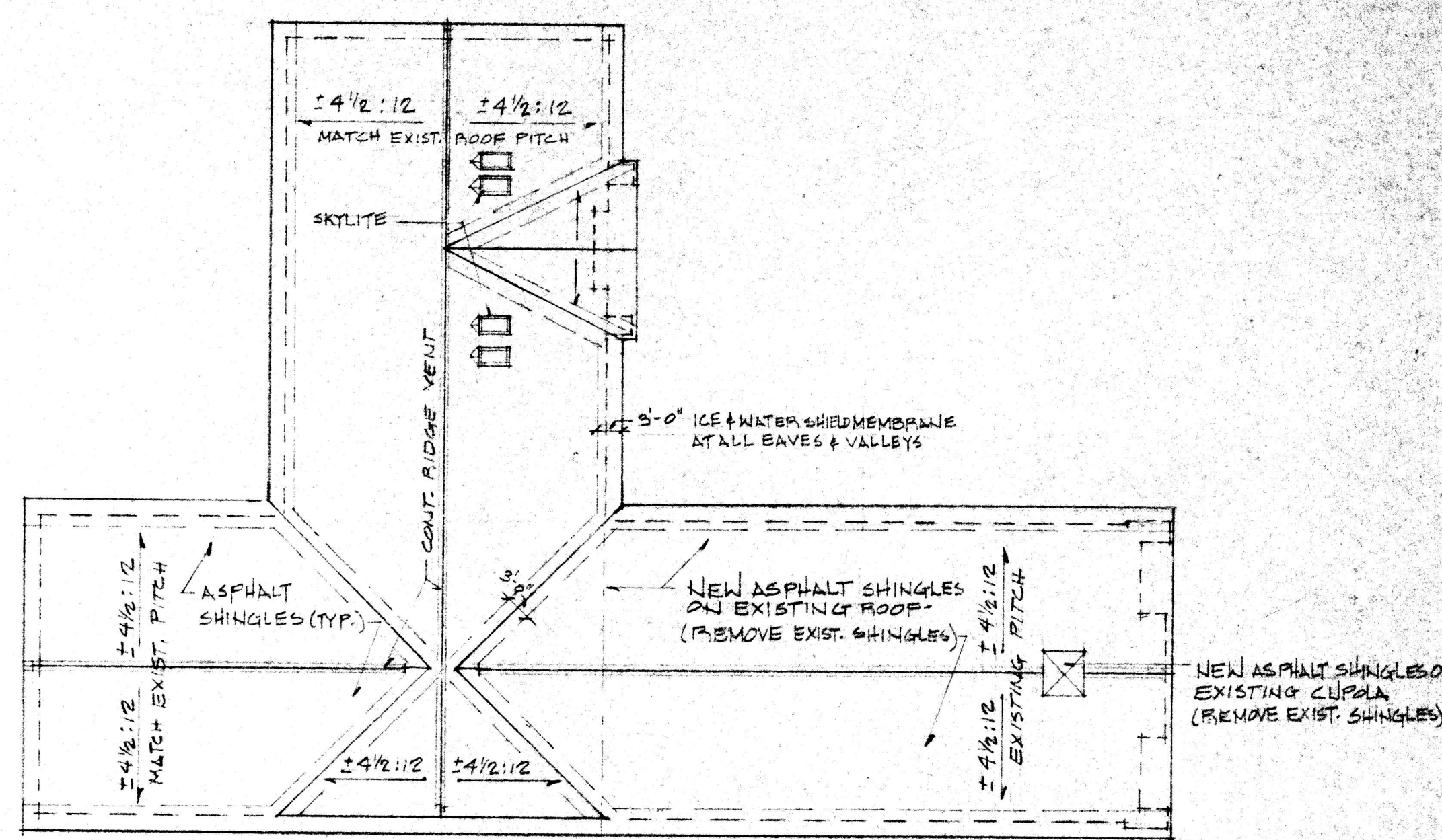


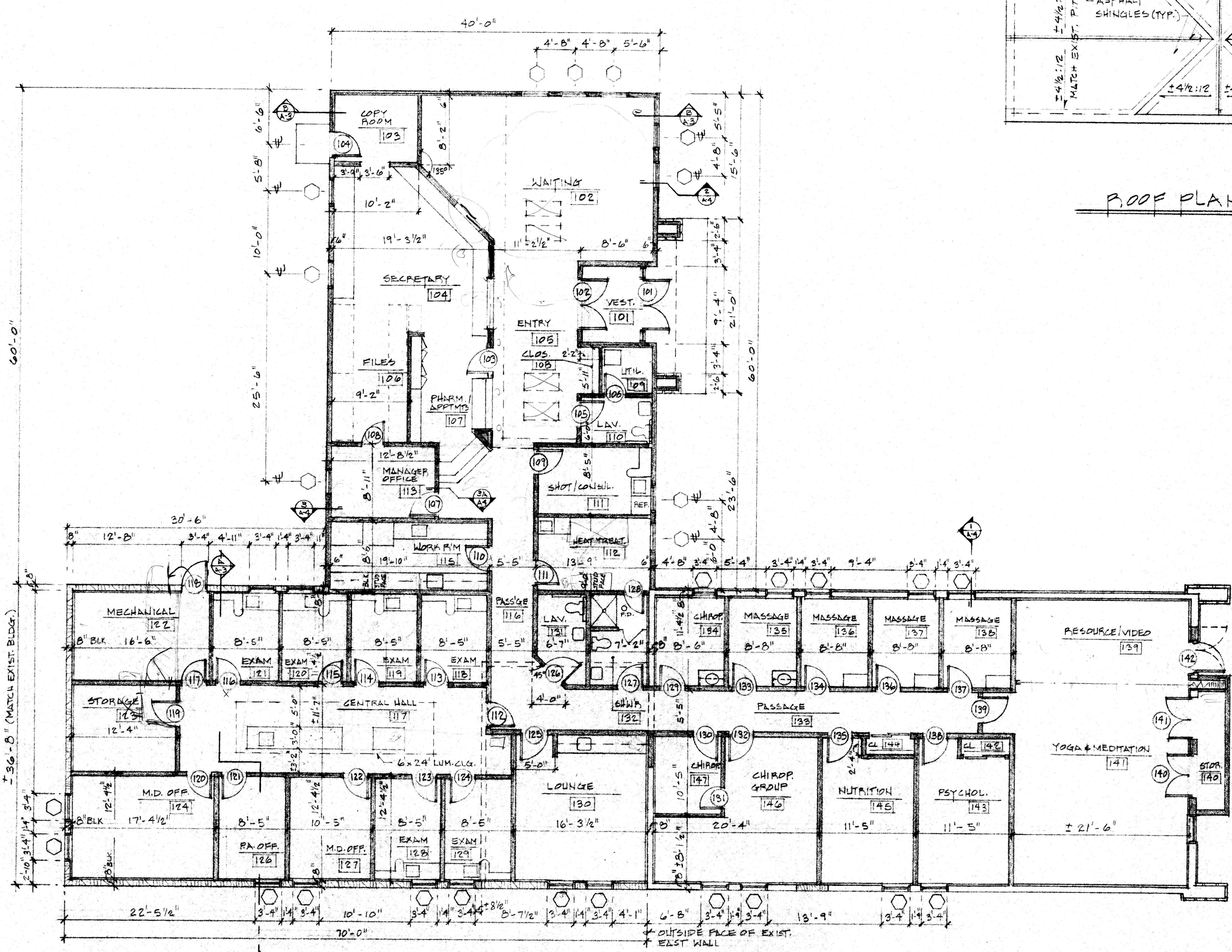
NO.	NAME	FLOOR	BASE	WALL MAT. FINISH	CEILING TYPE / MAT. FINISH	CLIG. HT.	REMARKS
101	VESTIBULE		RECESSED MNT.	VINYL	GYP. BD / SUSP. AC. TILE	8'-6"	
102	WAITING		CARPET	"	GYP. BD / FURRED GYP. BD / PAINT	9'-6"	
103	COPY		CARPET	"	GYP. BD / SUSP. AC. TILE	8'-6"	
104	SECRETARY		CARPET	"	GYP. BD / SUSP. AC. TILE	8'-6"	
105	ENTRY		CARPET	"	GYP. BD / GYP. BD / PAINT	VARIES	
106	FILES		CARPET	"	GYP. BD / SUSP. AC. TILE	8'-6"	
107	PHARM./APP.		CARPET	"	GYP. BD / SUSP. AC. TILE	8'-6"	
108	CLOSET		CARPET	"	GYP. BD / FURRED GYP. BD / PAINT	8'-0"	
109	UTILITY		VINYL TILE	"	GYP. BD / FURRED GYP. BD / PAINT	8'-0"	
110	LAVATORY		CERAMIC TILE	CER. TILE	A.C.T. W/NSCT GYP. BD / SUSP. AC. TILE	8'-6"	
111	SHOT/CONSUL.		SHEET VINYL	VINYL	GYP. BD / SUSP. AC. TILE	8'-6"	
112	HEAT TREAT.		SHEET VINYL	"	GYP. BD / SUSP. AC. TILE	8'-6"	
113	MANAGER OFF.		CARPET	"	GYP. BD / SUSP. AC. TILE	8'-6"	
114	STORAGE		VINYL TILE	"	GYP. BD / SUSP. AC. TILE	8'-0"	
115	WORK R.M.		VINYL TILE	"	GYP. BD / SUSP. AC. TILE	8'-6"	
116	PASSAGE		CARPET	"	GYP. BD / SUSP. AC. TILE	8'-0"	
117	CENTRAL HALL		CARPET	"	GYP. BD / SUSP. AC. TILE	8'-0"	
118	EXAM		SHEET VINYL	"	GYP. BD / SUSP. AC. TILE	8'-6"	
119	EXAM		SHEET VINYL	"	GYP. BD / SUSP. AC. TILE	8'-6"	
120	EXAM		SHEET VINYL	"	GYP. BD / SUSP. AC. TILE	8'-6"	
121	EXAM		SHEET VINYL	"	GYP. BD / SUSP. AC. TILE	8'-6"	
122	MECHANICAL		VINYL TILE	"	GYP. BD / SURFACE GYP. BD / PAINT	11'-6"	
123	STORAGE		VINYL TILE	"	GYP. BD / SURFACE GYP. BD / PAINT	8'-6"	
124	M.D. OFF.		CARPET	"	GYP. BD / SUSP. AC. TILE	8'-6"	
125							
126	P.A. OFF.		CARPET	VINYL	GYP. BD / SUSP. AC. TILE	8'-6"	
127	M.D. OFF.		CARPET	"	GYP. BD / SUSP. AC. TILE	8'-6"	
128	EXAM		SHEET VINYL	"	GYP. BD / SUSP. AC. TILE	8'-6"	
129	EXAM		SHEET VINYL	"	GYP. BD / SUSP. AC. TILE	8'-6"	
130	LOUNGE		CARPET	"	GYP. BD / SUSP. AC. TILE	8'-6"	
131	LAVATORY		CERAMIC TILE	CER. TILE	A.C.T. W/NSCT GYP. BD / SUSP. AC. TILE	8'-6"	
132	SHOWER		CER. TILE	"	A.C.T. W/NSCT GYP. BD / SUSP. AC. TILE / FURRED GYP. BD	8'-6"	
133	PASSAGE		CARPET	VINYL	GYP. BD / SUSP. AC. TILE	8'-0"	
134	CHIROP.		CARPET	"	GYP. BD / SUSP. AC. TILE	8'-6"	
135	MESSAGE		SHEET VINYL	"	GYP. BD / SUSP. AC. TILE	8'-6"	
136	MESSAGE		SHEET VINYL	"	GYP. BD / SUSP. AC. TILE	8'-6"	
137	MESSAGE		SHEET VINYL	"	GYP. BD / SUSP. AC. TILE	8'-6"	
138	MESSAGE		SHEET VINYL	"	GYP. BD / SUSP. AC. TILE	8'-6"	
139	RESOURCE		CARPET	"	GYP. BD / SUSP. AC. TILE	8'-10"	
140	STORAGE		CARPET	"	GYP. BD / FURRED GYP. BD / PAINT	8'-6"	
141	YOGA		CARPET	"	GYP. BD / SUSP. AC. TILE	8'-10"	
142	CLOSET		CARPET	"	GYP. BD / SUSP. AC. TILE	8'-6"	
143	PSYCHOL.		CARPET	"	GYP. BD / SUSP. AC. TILE	8'-6"	
144	CLOSET		CARPET	"	GYP. BD / SUSP. AC. TILE	8'-0"	
145	NUTRITION		CARPET	"	GYP. BD / SUSP. AC. TILE	8'-6"	
146	CHIROP. GROUP		CARPET	"	GYP. BD / SUSP. AC. TILE	8'-6"	
147	CHIROP.		CARPET	"	GYP. BD / SUSP. AC. TILE	8'-6"	



WALL TYPES
3" = 1'-0"



ROOF PLAN
SCALE: 1/16" = 1'-0"



FLOOR PLAN
SCALE: 1/8" = 1'-0"

EXIT SIGNS
PRELIMINARY
NOT FOR CONSTRUCTION
NOV 06 1996

ADDITION AND ALTERATIONS FOR
NEW MEDICAL HEALTH CENTER
558 ALBANY POST ROAD, HYDE PARK, NY, 12538
FOR RICHARD I. HOROWITZ, M.D.

FLOOR PLAN / ROOF PLAN

KIRCHHOFF CONSTRUCTION MANAGEMENT AND

WARREN-CORNACCHINI
ASSOCIATES ARCHITECTS
2 BOICE ROAD HYDE PARK, NEW YORK 12538

SCALE AS NOTED	DWG. NO.
DRAWN MKL	A-2
DATE	
REVISED	

OF 6