



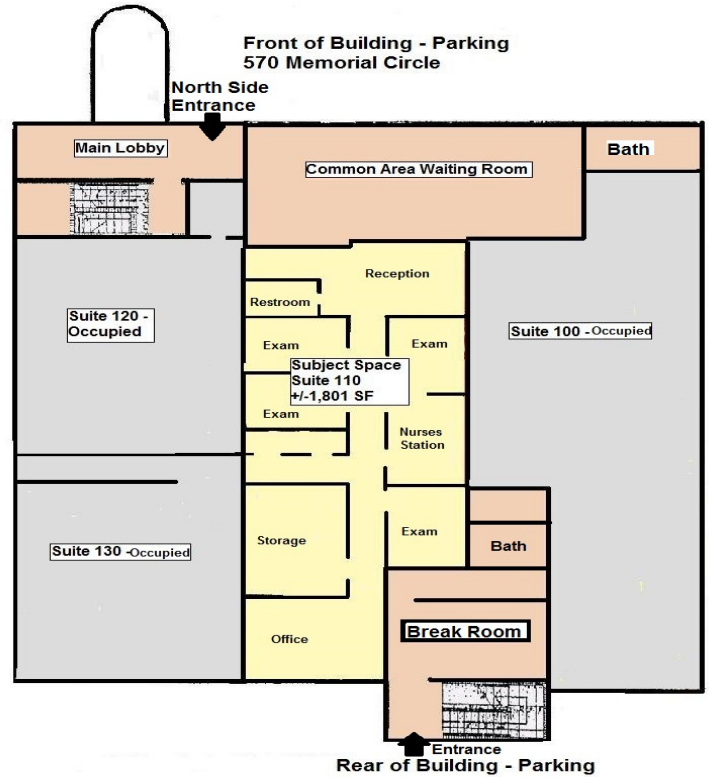
# 570 MEMORIAL CIRCLE

## Unit 110

Ormond Beach, FL 32174



LEASE



### OFFERING SUMMARY

Available SF: Unit 110	1,801SF
Lease Rate:	\$14.00 SF/yr (NNN)
Lot Size:	52,707 SF
Year Built:	1984
Building Size:	23,000 SF
Zoning:	B-1
Market:	East Central Florida

CBCBENCHMARK.COM

Ed Schwarz  
O: 386 672 8530 | C: 386 405 7388  
eschwarz@cbcbenchmark.com

G.G Galloway  
O: 386 672 8530 | C: 386 295 0839  
ggalloway@cbcbenchmark.com

### PROPERTY OVERVIEW

Exceptional Medical office space available in central Ormond Beach location. 3 story multi-tenant office building. Unit 110 available October, 2021. Tenant pays share of utilities. Pass-throughs @ \$3.50/SF. Lease terms negotiable. Well maintained office building with medical and other professional services in building. Subject Yellow Area 110 includes 5 exam rooms, Nurses Station, Doctors Office, Receptionist Area, 2 Restrooms, Record Storage, and Common Area Kitchen. Elevator and On Site Management. Featured space includes some furniture and doctors equipment. Close to Trails Shopping Center off Nova Road and near Granada Blvd. Minutes to I-95. Call or email for additional information.

### PROPERTY HIGHLIGHTS

- B-1 Zoning
- Minutes to I-95
- Well Maintained Professional Building
- Private Restrooms
- Professional/Clinics/Labs/Medical
- Ample Parking

