

# AVAILABLE

## COMMERCIAL

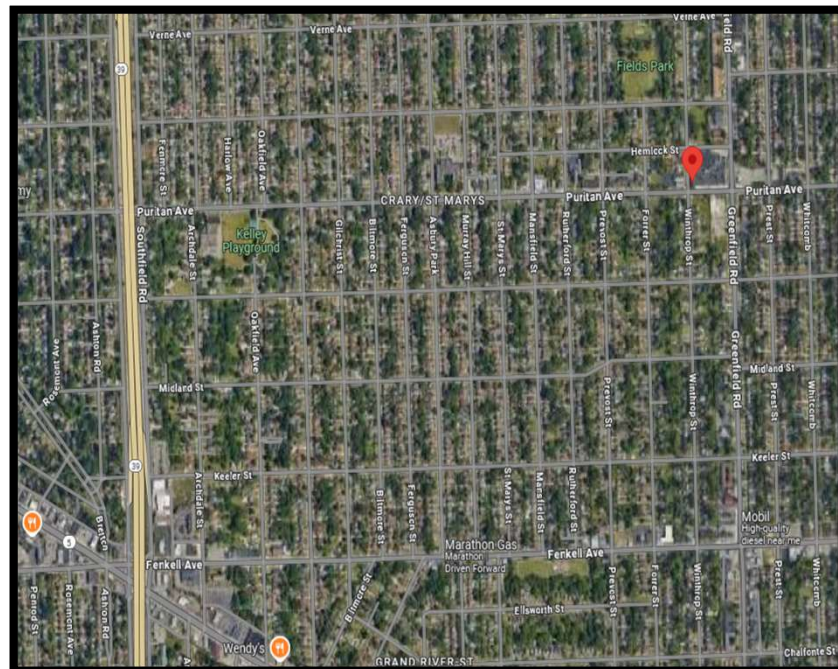
15560 Puritan Street  
DETROIT, MI 48227

2,200 Square Feet  
GENERAL COMMERCIAL



### PROPERTY FEATURES

- Adjacent to Greenfield Market
- Walk Up Window
- Greenfield Near Fenkell Ave
- Zoned B2 (Local Business)
- Many Possible Uses (See Page 4)



**BEAL**  
— REAL ESTATE

**734.602.5700**  
**Listings@GoBeal.com**

Information is subject to verification and no liability for errors or omissions is assumed. Price is subject to change and listing withdrawal.

# AVAILABLE

## COMMERCIAL

15560 Puritan Street  
DETROIT, MI 48227

2,200 Square Feet  
GENERAL COMMERCIAL

---

### BUILDING SIZE / AVAILABILITY

Total Building Sq. Ft.:	N/A	Total Available Sq. Ft.:	2,200 SF	Class:	N/A
Typical Floor Plate:	N/A	Min / Max Cont. Sq. Ft.:	N/A	No. of Floors:	N/A

---

### PROPERTY INFORMATION

Zoning:	N/A	Parking:	N/A
Exterior Construction:	N/A	Power:	N/A
Structural System:	N/A	Security Systems:	N/A
Roof:	N/A	Restrooms:	N/A
Floors / Covering:	N/A	Sprinklers:	N/A
Heating:	N/A	Signage:	N/A
Air-Conditioning:	N/A	Delivery Area:	N/A
Ceiling Height:	N/A	Date Available:	N/A
Year Built:	N/A	Acreage:	N/A

---

### OCCUPANCY

---

### PRICING INFORMATION

Lease Rate:	N/A	Rentable/Usable:	N/A	Impr Allowance:	N/A
Lease Term:	N/A	Total Taxes:	N/A	Deposit:	N/A
Options:	N/A	Parcel #:	N/A		
Tenant Responsibility:	N/A				

---

**Comments** Conveniently located close to Capital Region International Airport, this retail site sits within a thriving commercial corridor in north Lansing. Formerly leased to Subway, which vacated after a substantial tenure, the space is well-positioned for a new occupant to capitalize on its strong location history and built-in visibility.



734.602.5700  
Listings@GoBeal.com

# AVAILABLE

## COMMERCIAL

15560 Puritan Street  
DETROIT, MI 48227

2,200 Square Feet  
GENERAL COMMERCIAL

### INTERIOR PHOTO



**BEAL**  
— REAL ESTATE

**734.602.5700**  
**Listings@GoBeal.com**

Information is subject to verification and no liability for errors or omissions is assumed. Price is subject to change and listing withdrawal.