

FOR SALE

MEDICAL OFFICE CONDO

±13,132 SF

ChristianaCare Hospital Campus: Medical Arts Pavilion 2
4735 Ogletown Stanton Rd | Newark, DE 19713 | New Castle County



PRICE: \$5,199,000


ZOMMICK MCMAHON
COMMERCIAL REAL ESTATE

1306 Wilmington Pike, Suite A-2
West Chester, PA 19382
610.359.1100 | www.zmcre.com

**KNOWLEDGE.
INTEGRITY.
RESULTS.**

VIRTUAL TOUR



 Exclusive Marketing Advisor:



MARK TRANI

e: m.trani@zmcre.com
o: 610.359-1100
c: 302.383.5156

RARE PURCHASE OPPORTUNITY: MEDICAL OFFICE SPACE WITHIN THE CHRISTIANA HOSPITAL CAMPUS

Address: Christiana Hospital Campus
Medical Arts Pavilion 2
4735 Ogletown Stanton Rd
Newark, DE 19713

Size: ±13,132 SF

Price: \$5,199,000.00

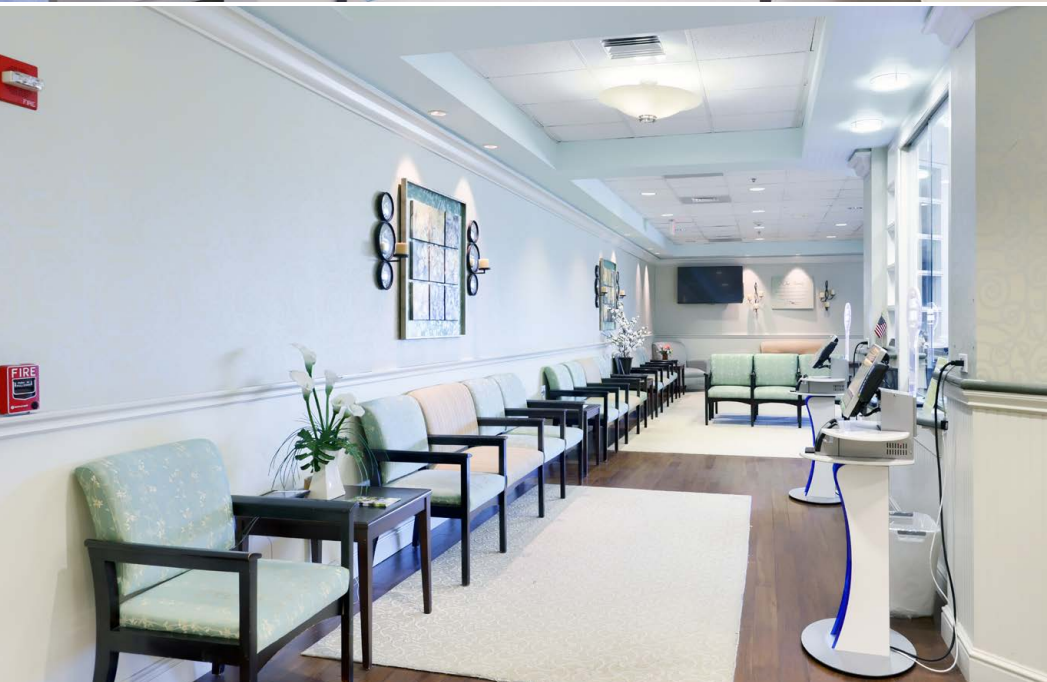
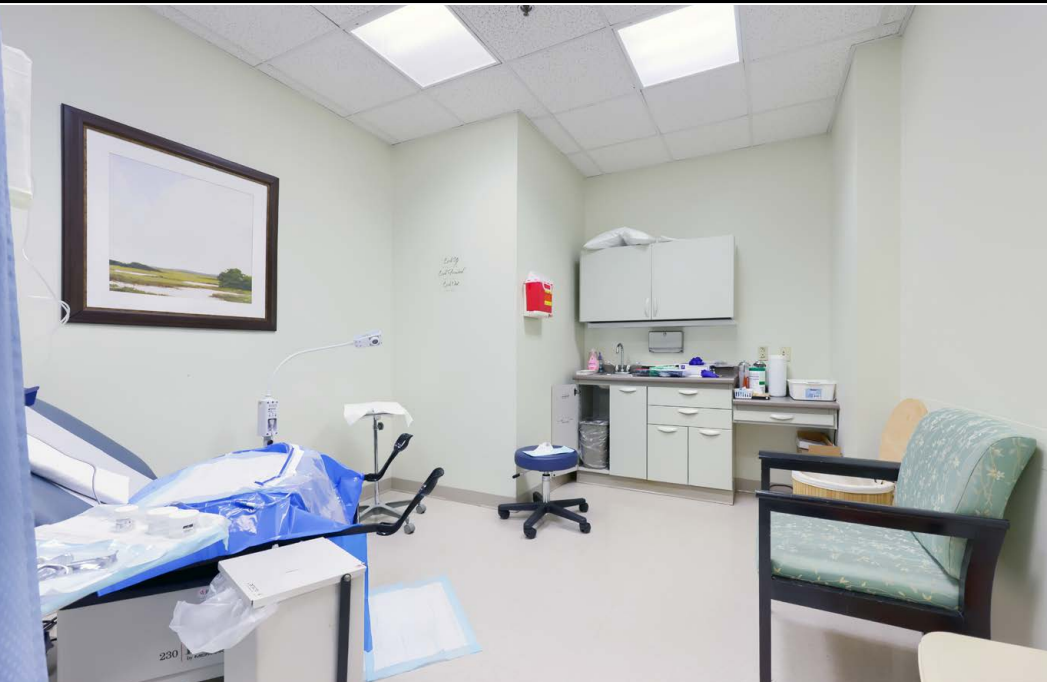
- Elevator Service
- 19 Exam Rooms
- 9 Individual Offices
- 2 Large Back office or conference rooms
- 1 Large Staff Kitchen and Break room
- 1 Large Laboratory
- 9 Bathrooms
- Spacious waiting room with child friendly cut out
- Large reception and front office

Attached Suite with separate entrance off second floor

- 3 Exam Rooms
- 1 Office
- 1 Bathroom
- Reception and Waiting Area
- Locked access to main suite









±13,132 SF



 **ChristianaCare**
Hospital Campus


SITE

 **Bank of America**
Newark Corporate Campus

MILLER'S
ALE-HOUSE

Cheddar's
SCRATCH KITCHEN

 **TD Bank**

 **Blood Bank of Delmarva**

  **URGENT CARE**

 **Chick-fil-A**

Wawa

DUNKIN'

metro
-diner-



ABOUT ZOMMICK MCMAHON COMMERCIAL REAL ESTATE

Zommick McMahon Commercial Real Estate, Inc. has been a Metro Philadelphia Area staple since its inception in 1949. The Company was founded by Joseph Zommick, and continues today with Ryan McMahon and his highly experienced staff. We are much more than just a real estate brokerage firm – we are a team of experienced, consummate professionals who are dedicated to superb customer service. Partner with us for support from some of the top commercial brokers in Pennsylvania, New Jersey and Delaware.



ZOMMICK MCMAHON COMMERCIAL REAL ESTATE

KNOWLEDGE. INTEGRITY. RESULTS

MARK TRANI

e: m.trani@zmcre.com

o: 610.359-1100

c: 302.383.5156

1306 Wilmington Pike, Suite A-2
West Chester, PA 19382

610.359.1100

www.zmcre.com
