

For Lease

Crosswind Business Center

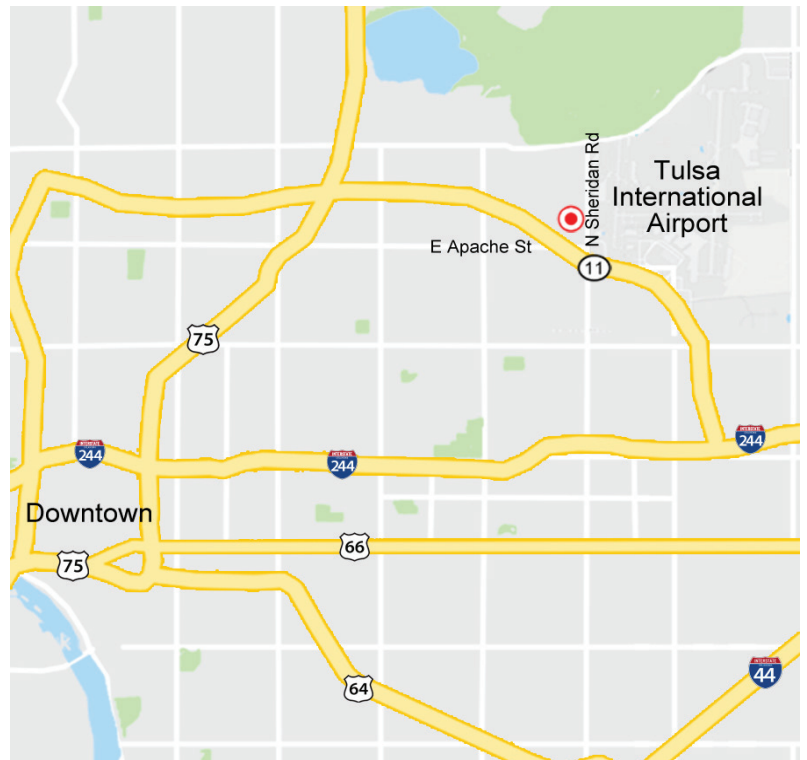
2708 N Sheridan Rd., Tulsa, OK 74115

WIGGIN
PROPERTIES, LLC



Property Features

- ±3,000 SF
- Reception Area, (6) Private Offices, (3) Restrooms, Small Warehouse, and (2) Large Open Assembly / Creative Spaces
- 8' x 8' Pick Up High Loading Door
- 16' Clear Height (Above Drop Ceiling)
- Frontage on N Sheridan Rd.
- Close Proximity to Hwy 11 & Tulsa International Airport
- Glass Storefronts, Exterior Paint, Repaved Parking Lot
- Exterior Lighting
- Zoned IL (Light Industrial)



Call Shawna Hale, CCIM, or John Watchous at 918.935.2010

shale@wigginprop.com | jwatchous@wigginprop.com | wigginprop.com

This material is provided for information purposes only. It is from sources believed to be reliable. However, Wiggin Properties makes no warranties or representations, expressed or implied, as to the accuracy or sufficiency of the information. It is presented subject to errors, omissions, changes or withdrawal without notice. Square footage is provided by the local County Assessor or the Owner. Photos and graphics with copyrights by Costar, Google, Wiggin Properties and independent contractors are used with permission.

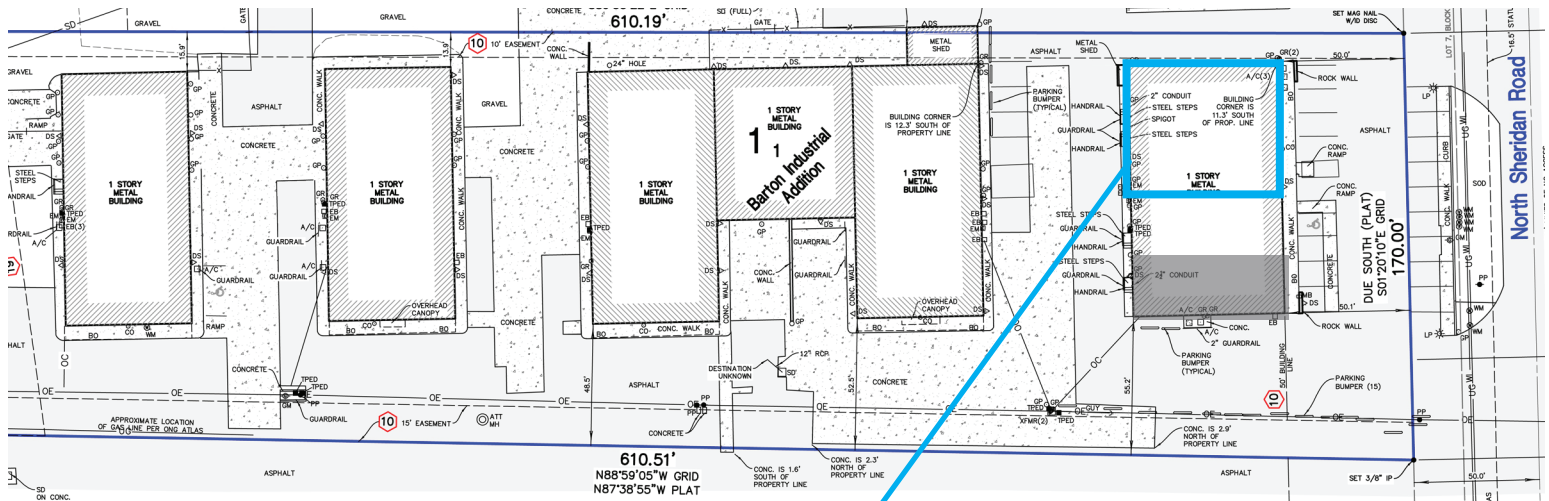
For Lease

Crosswind Business Center

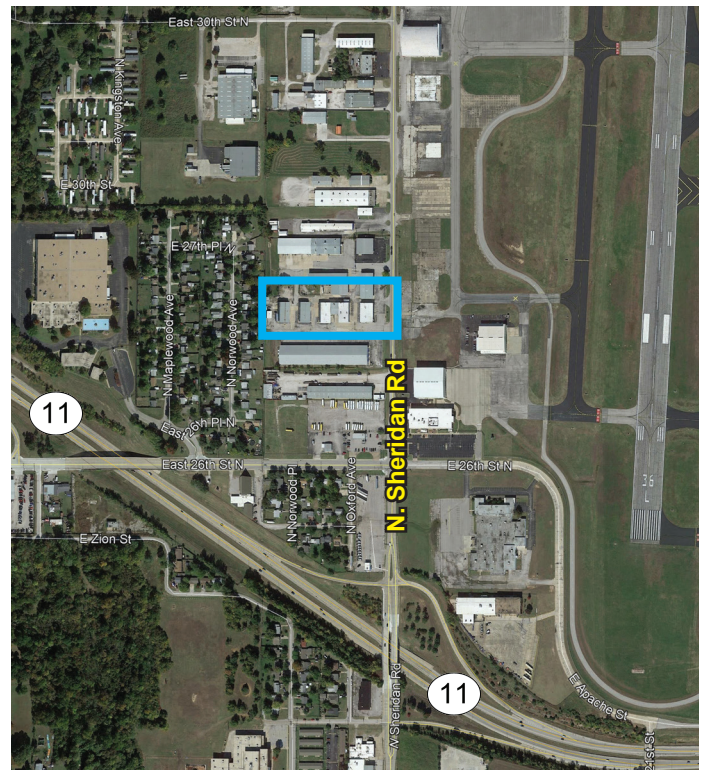
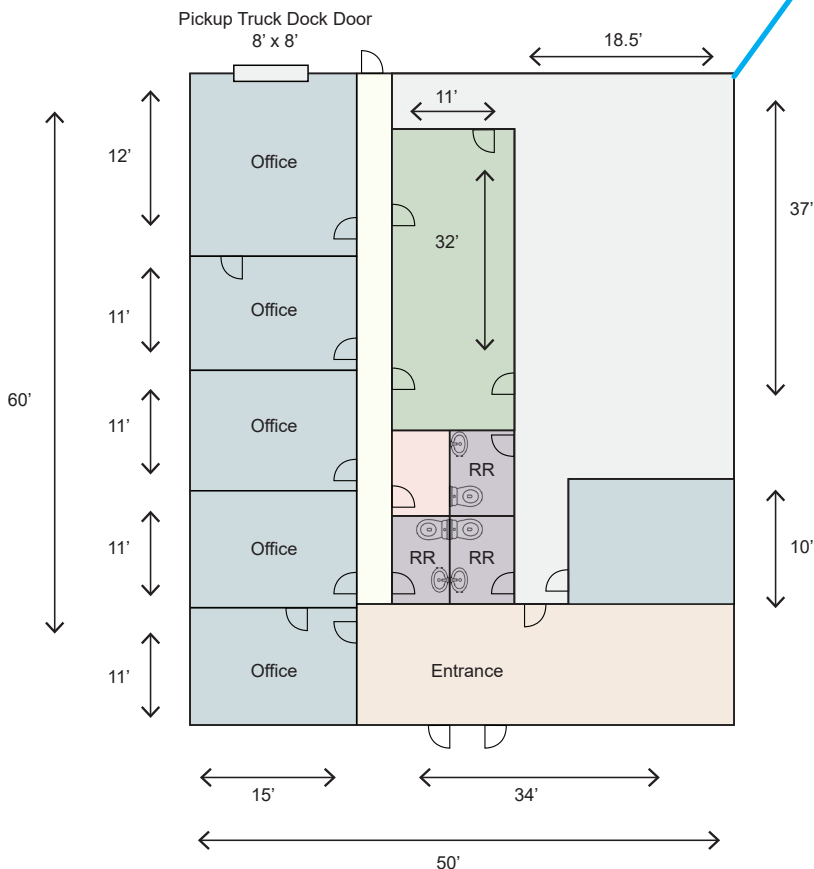
2708 N Sheridan Rd., Tulsa, OK 74115

WIGGIN
PROPERTIES, LLC

Site Plan



Floor Plan - Building A



Call Shawna Hale, CCIM, or John Watchous at **918.935.2010**

shale@wigginprop.com | jwatchous@wigginprop.com | wigginprop.com

This material is provided for information purposes only. It is from sources believed to be reliable. However, Wiggin Properties makes no warranties or representations, expressed or implied, as to the accuracy or sufficiency of the information. It is presented subject to errors, omissions, changes or withdrawal without notice. Square footage is provided by the local County Assessor or the Owner. Photos and graphics with copyrights by Costar, Google, Wiggin Properties and independent contractors are used with permission.