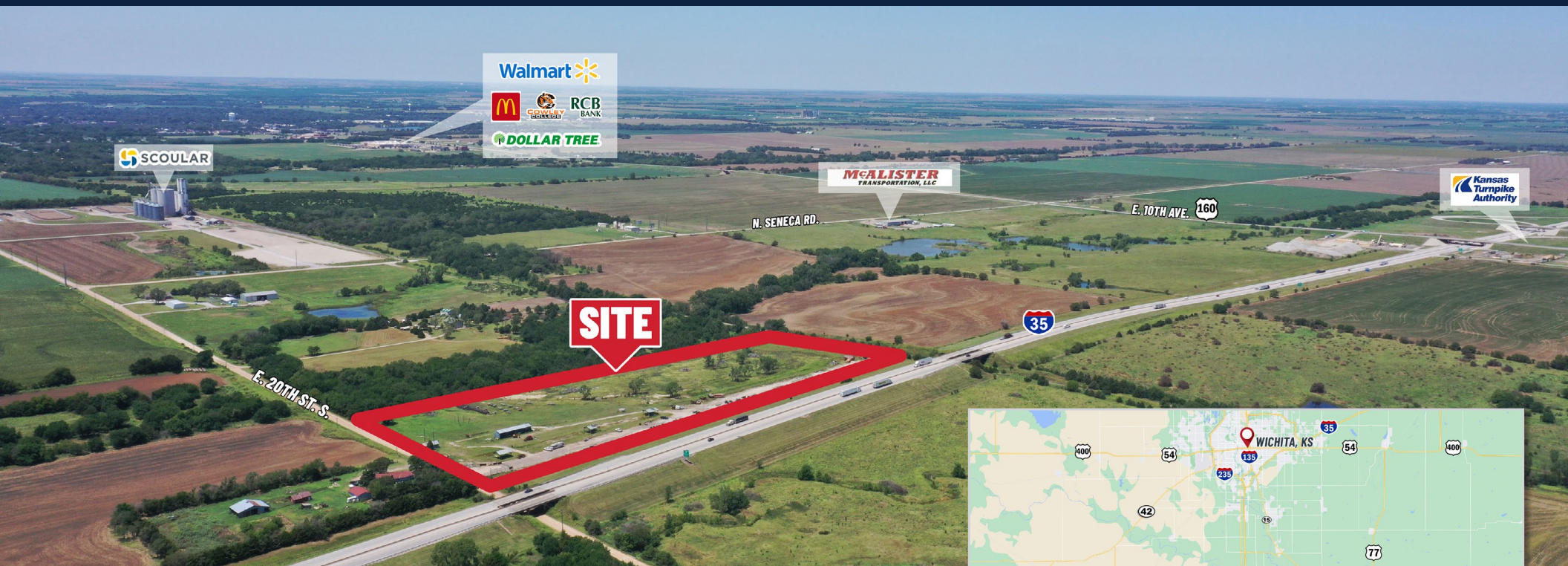


15± ACRES JUST OFF HWY. I-35 IN WELLINGTON

FOR SALE 846 E. 20th St. S. | Wellington, KS 67152 in Sumner County



SALE PRICE

\$400,000.00

~~\$450,000.00~~

SITE SIZE

15± ACRES

2023 TAXES

GENERALS: \$2,968.76

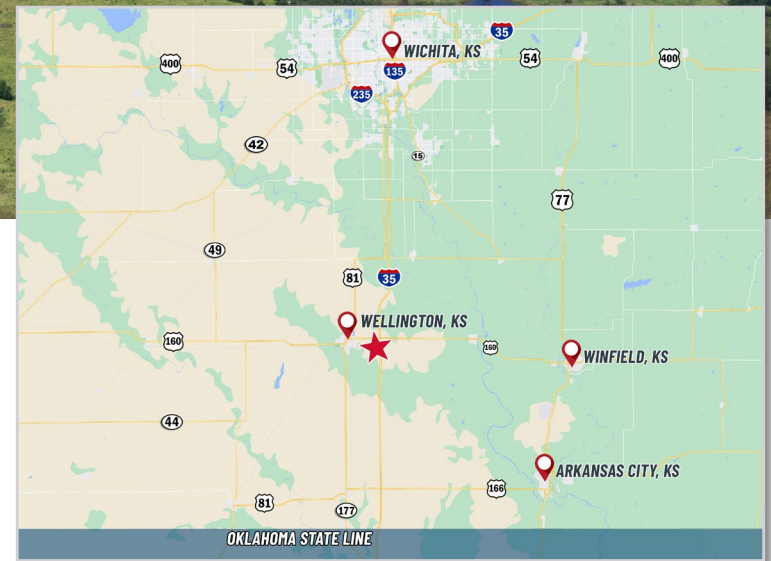
PROPERTY HIGHLIGHTS

- 15± acres located just off Hwy. I-35 with highway frontage, and 5 minutes from downtown Wellington, KS.
- Possible rail access.
- Easy to access land with improvements.
- Several storage areas on property.
- Access gate.
- Improvements include a farm utility shelter, prefabricated storage shed, farm utility storage shed, and a tool shed.



TRAFFIC COUNTS

APPROX. 11,116 VPD ALONG HWY. I-35



TRAVEL TIME

WICHITA, KS » 35 MINS. | OKLAHOMA CITY, OK » 2 HRS.



Offered exclusively by:

Kevin Howell

| 316-292-3971

| khowell@weigand.com

15± ACRES JUST OFF HWY. I-35 IN WELLINGTON

FOR SALE 846 E. 20th St. S. | Wellington, KS 67152 in Sumner County



Offered exclusively by:

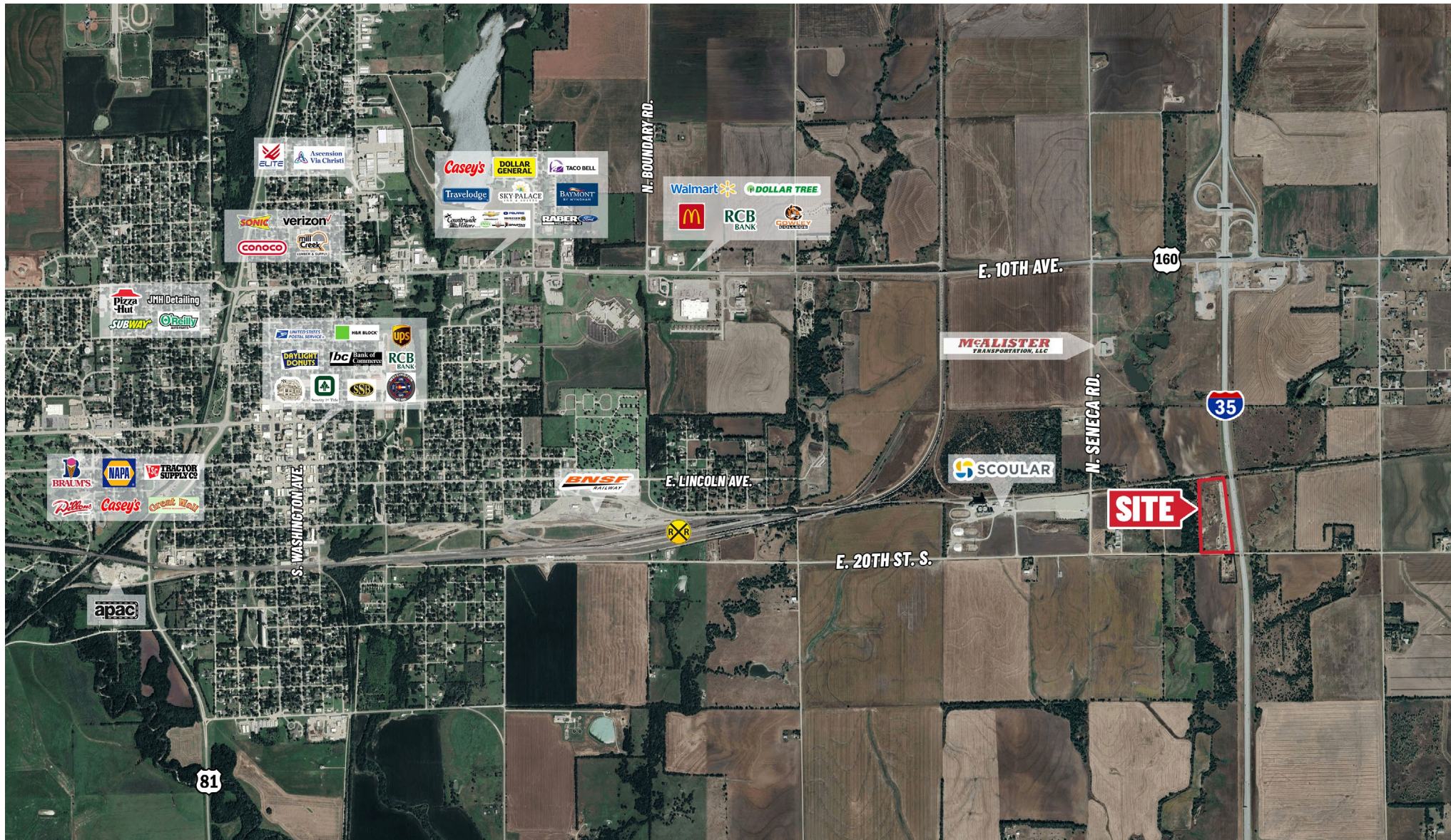
Kevin Howell

| 316-292-3971

| khowell@weigand.com

15± ACRES JUST OFF HWY. I-35 IN WELLINGTON

FOR SALE 846 E. 20th St. S. | Wellington, KS 67152 in Sumner County



Offered exclusively by: **Kevin Howell** | 316-292-3971 | khowell@weigand.com