

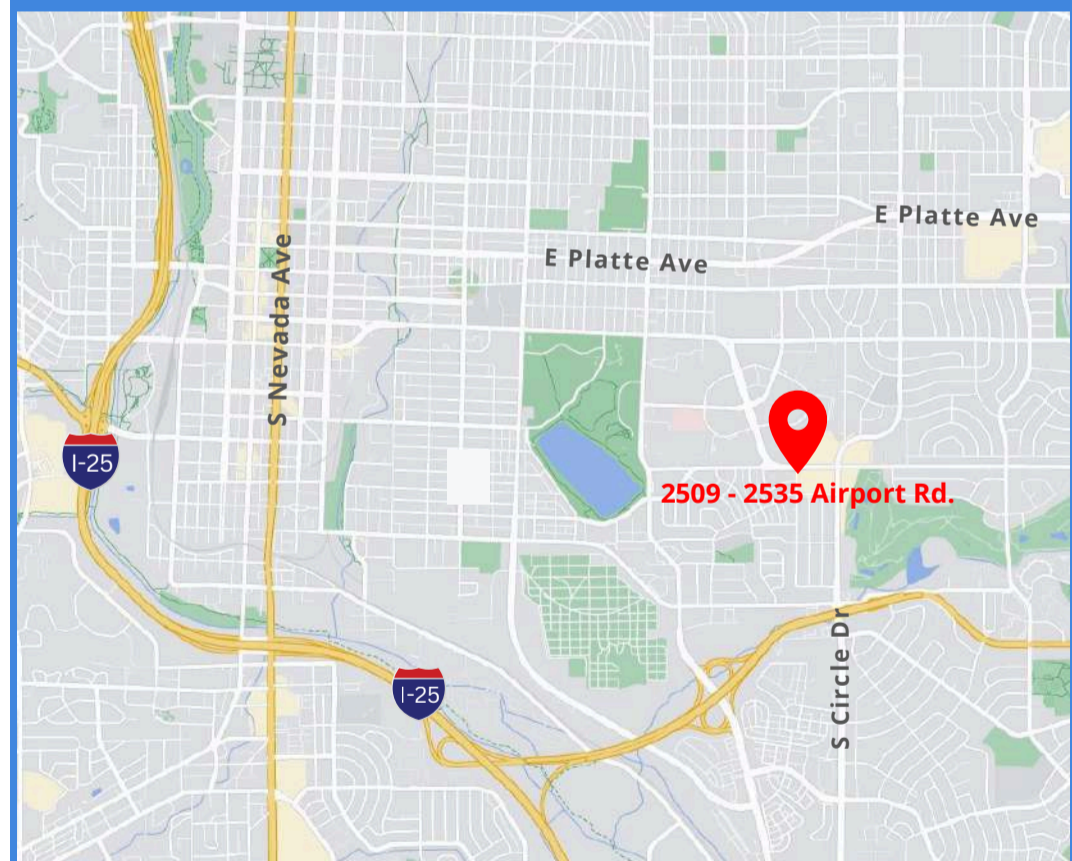
**FLEX SPACE
FOR LEASE**

**2511 Airport Road
Colorado Springs, CO 80910**

PROPERTY SPECIFICATIONS

- 
LOCATION: 2511 Airport Road
Colorado Springs, CO 80910
- 
AVAILABLE SPACE: ±8,313 SF
- 
LEASE RATE: \$11.50 PSF + NNN
NNN: \$3.40 PSF
- 
LOADING: 2 - Drive-In Doors
1 - Exterior Dock
- 
ZONING: Flex, Industrial/Office

MAP



Additional Information:

- Office / Warehouse layout
- Ample Parking

JASON CASTRO
President



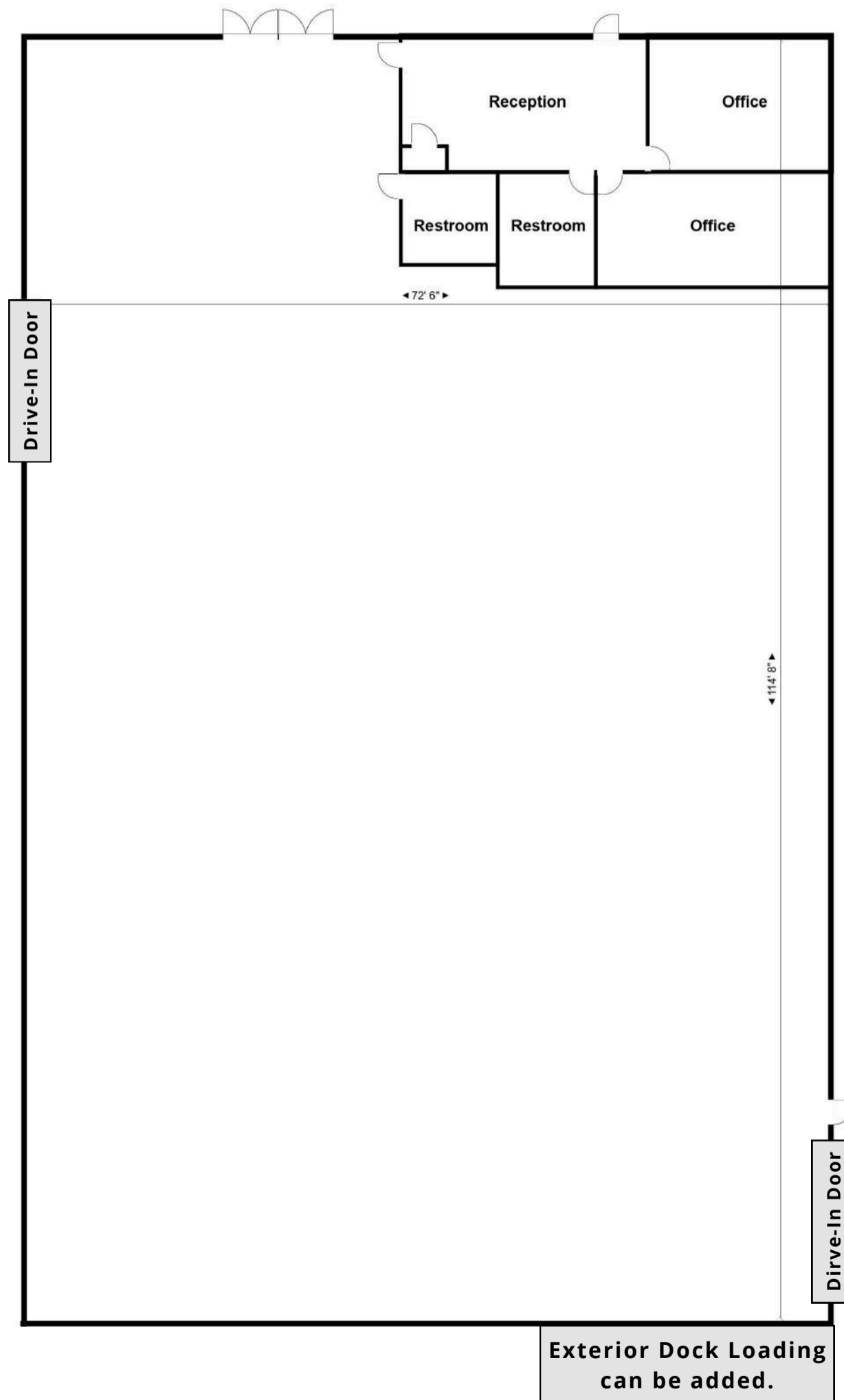
jason@peakcp.net
719.227.9987

FLEX SPACE FOR LEASE

2511 Airport Road
Colorado Springs, CO 80910

FLOOR PLAN

2511



The particulars, details and visuals shown herein are intended to give a general idea of the property. As such, they are not to be relied upon as statements of fact



2727 N. Cascade Avenue,
Suite 127, Colorado Springs, CO 80907

719.227.9987

www.peakcp.net

Peak Commercial Properties believes information contained herein, while not guaranteed, is from sources they believe reliable. Price, terms, and information are subject to change without notice.

FLEX SPACE FOR LEASE


2511 Airport Road
Colorado Springs, CO 80910


AERIAL



The particulars, details and visuals shown herein are intended to give a general idea of the property. As such, they are not to be relied upon as statements of fact



 2727 N. Cascade Avenue,
Suite 127, Colorado Springs, CO 80907

 719.227.9987

 www.peakcp.net

Peak Commercial Properties believes information contained herein, while not guaranteed, is from sources they believe reliable. Price, terms, and information are subject to change without notice.