

THE FREDETTE GROUP
FOR LEASE
COMMERCIAL SPACE
NEIL FREDETTE
978-302-6377
FREDETTEGROUP.COM

KW MERRIMACK VALLEY
 KELLER WILLIAMS REALTY
 BOSTON, MA

FOR LEASE

**At Groton Road Convenience Plaza
 Rt 40 Westford**

Visible Location
 High Traffic Corridor

3 Spaces Available

1. Larger end unit; with kitchen and freezer/refrigerator; previously a Dunkin Donuts
2. End Unit; multiple private backrooms, 2-bath; second floor office & utility space
3. Middle unit; large open space with smaller private back area and 1-bath; previous nail salon



221-225 Groton Rd. Westford, MA

#1



Perfect for Restaurant
 or Fast Food Service
\$5,000



#2



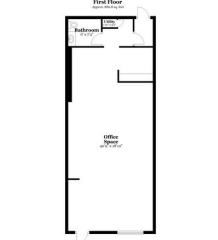
225 Groton Road, Unit 1, Westford, MA



#3



225 Groton Road, Unit 2, Westford, MA



Flexible for use. Previously used as Hair and Nail Salon
\$1,850 and \$1,700