

FOR SALE

THE SHOPPES AT UPPER HANOVER

GRAVEL PIKE & BLOMMER DRIVE | EAST GREENVILLE, PA

RETAIL

PAD AVAILABLE FOR SALE - 0.76 ACRES



CONTACT US

Jeffrey Cohen

Executive Vice President
610 834 8000
jeffrey.cohen@cbre.com
Licensed: DE, MD, PA
Licensed Salesperson: NJ

Nicole Johnson

Senior Vice President
484 567 2470
nicole.johnson@cbre.com
Licensed: PA
Licensed Salesperson: NJ

CBRE, Inc.

625 West Ridge Pike
Building A; Suite 100
Conshohocken, PA 19428
T 610 834 8000

© 2019 CBRE, Inc. All rights reserved. This information has been obtained from sources believed reliable, but has not been verified for accuracy or completeness. You should conduct a careful, independent investigation of the property and verify all information. Any reliance on this information is solely at your own risk. CBRE and the CBRE logo are service marks of CBRE, Inc. All other marks displayed on this document are the property of their respective owners.

CBRE

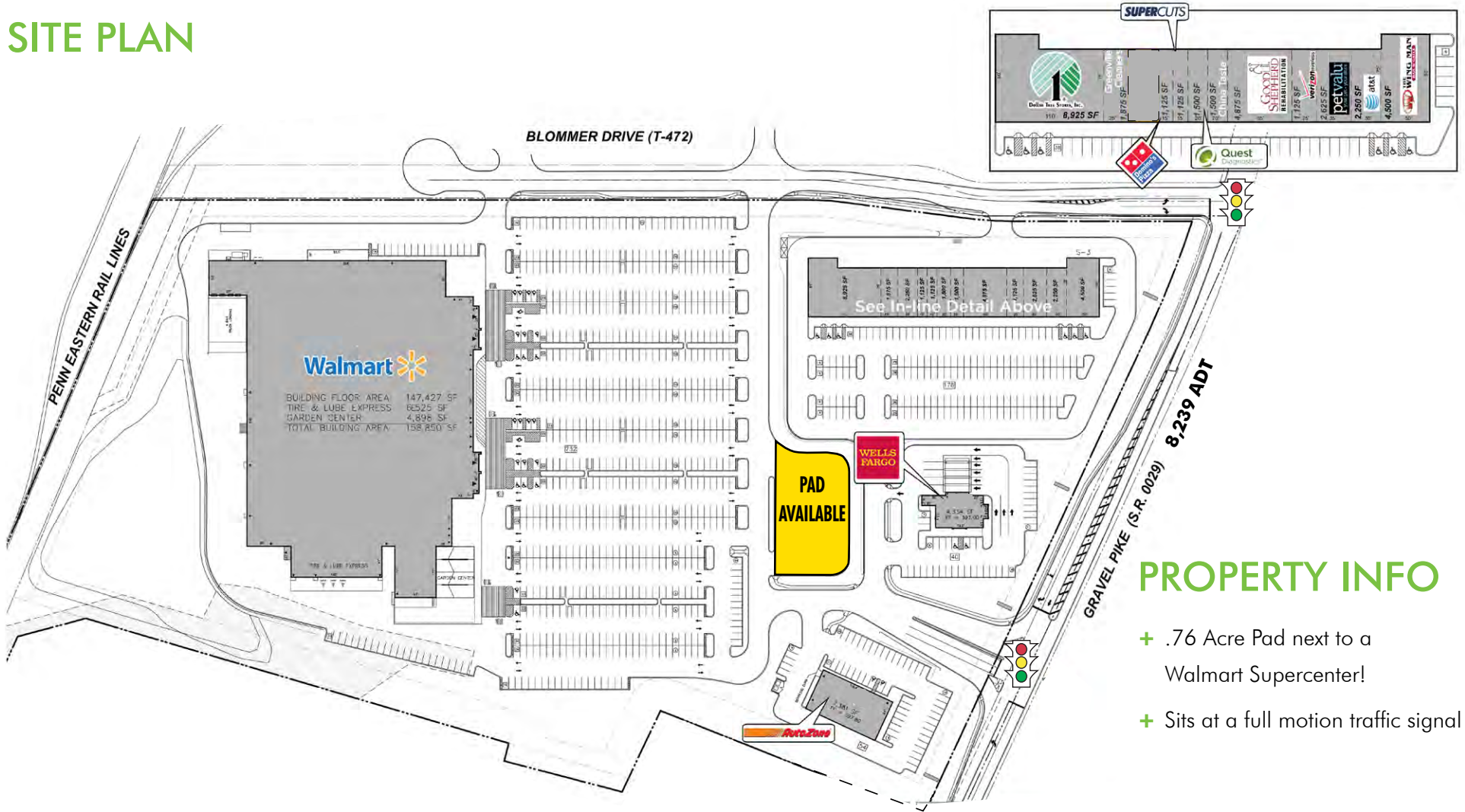
FOR SALE

THE SHOPPES AT UPPER HANOVER

GRAVEL PIKE & BLOMMER DRIVE | EAST GREENVILLE, PA

RETAIL

SITE PLAN



PROPERTY INFO

- + .76 Acre Pad next to a Walmart Supercenter!
- + Sits at a full motion traffic signal

JOIN: **Walmart** **petvalu** **WELLS FARGO** **Quest** **SUPERCUTS** **AT&T** & MORE...

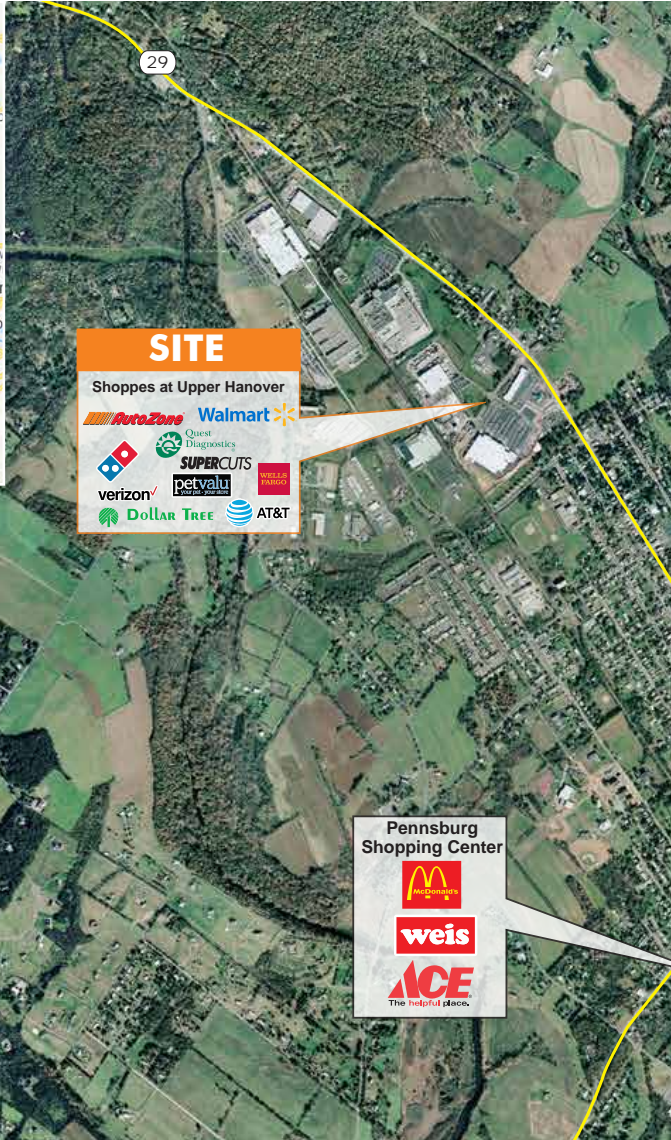
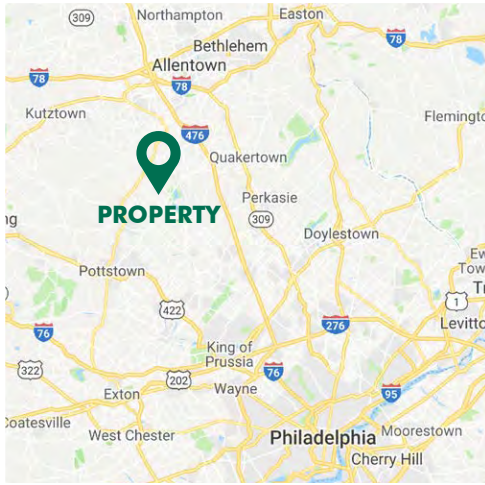
CBRE

FOR SALE

THE SHOPPES AT UPPER HANOVER

GRAVEL PIKE & BLOMMER DRIVE | EAST GREENVILLE, PA

RETAIL



| DEMOGRAPHICS | 1 Mile | 3 Miles | 5 Miles |
|------------------------|----------|----------|----------|
| Population (Est. 2018) | 4,204 | 16,436 | 31,232 |
| Median HH Income | \$70,145 | \$75,347 | \$76,550 |
| Daytime Population | 5,636 | 14,283 | 24,324 |