



Keegan & Coppin
COMPANY, INC.

FOR LEASE

6570 OAKMONT DRIVE
SANTA ROSA, CA

OFFICE SPACE
144+/- SF

OAKMONT REALTY
& PROPERTY MANAGEMENT

6570

<p>Suite 100-A</p> <p>Daytripping</p> <p>(707) 577-8894 www.godaytripping.com</p>	<p>TWEETEN ELDERCARE ADVISORS</p> <p>URGENT PLACEMENT SUPPORT</p>	<p>SUITE 110</p> <p>REAL PROPERTY Advisors, Inc.</p> <p>Orly Zuckerman 707-521-4075</p>	<p>Suite 106</p> <p>SHIRA RIDGE COMMERCIAL REAL ESTATE</p> <p>(415) 721-0275 www.shiraridge.com</p>
<p>Sue Carrell & ASSOCIATES</p> <p>RESIDENTIAL PROPERTY MANAGEMENT</p> <p>SUITE 100</p>	<p>Local Office of TRICIA A. SHINDLEDECKER</p> <p>Flourish your path in the future.</p>	<p>Suite 104</p> <p>valley moon SKIN CAFE</p> <p>(707) 596-0116</p>	

REAL PROPERTY
Advisors, Inc.

Go beyond broker.

REPRESENTED BY:

DOUGLASS A. BRAIK, SENIOR REAL ESTATE ADVISOR
LIC # 00544642 (707) 528-1400, EXT 245
DBRAIK@KEEGANCOPPIN.COM



PROPERTY DETAILS



6570 OAKMONT DRIVE
SANTA ROSA, CA

OFFICE SPACE
144+/- SF

HIGHLIGHTS

- 144+/- RSF
- High Quality Improvements In Place
- Excellent On-Site Parking
- Monument & Building Signage
- 1/4 Mile from Highway 12
- Common Kitchen & Outdoor Patio
- Three (3) Minutes from Oakmont Golf Club

DETAILS

AVAILABLE SPACES

Suite 103: 144+/- SF; \$525/Month

Fully Serviced with Janitorial, Nice sized 144+/- SF private office operable window, glass front, common restrooms and kitchen.

PRIMARY TYPE

Professional Office

ZONING

PM / Office

TOTAL BUILDING SF

5,350+/- sf

PARKING

5 : 1,000 Ratio

DESCRIPTION OF PREMISES

Multi tenant building of private office suites. Shared common kitchen, bathrooms, and patio.

LEASE TERMS

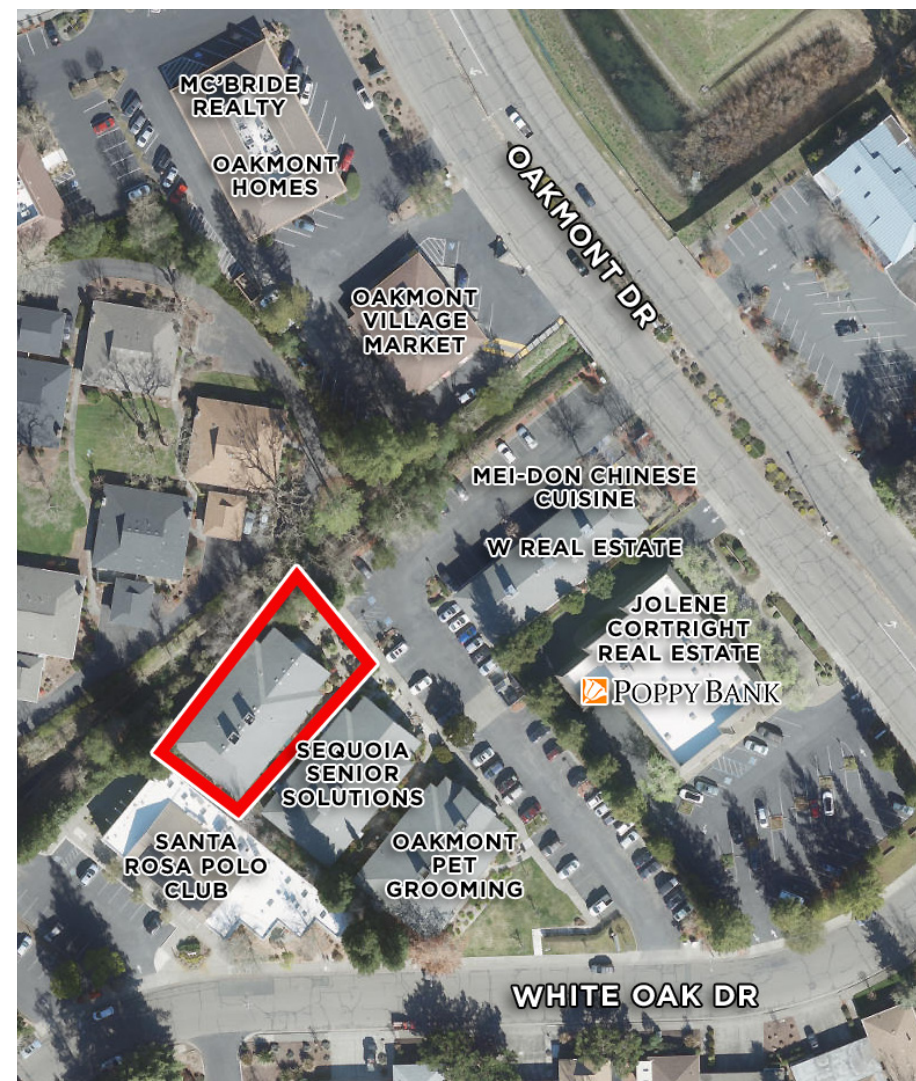
RATE

\$525/Month

TERMS

1-3-5 years preferred. Ownership is flexible. Fully Serviced.

Available August 1, 2024.



PRESENTED BY:

DOUGLASS A. BRAIK, SREA
LIC # 00544642 (707) 528-1400, EXT 245
DBRAIK@KEEGANCOPPIN.COM

The above information, while not guaranteed, has been secured from sources we believe to be reliable. Submitted subject to error, change or withdrawal. An interested party should verify the status of the property and the information herein.



PROPERTY VICINITY



6570 OAKMONT DRIVE
SANTA ROSA, CA

OFFICE SPACE
144+/- SF

DESCRIPTION OF AREA

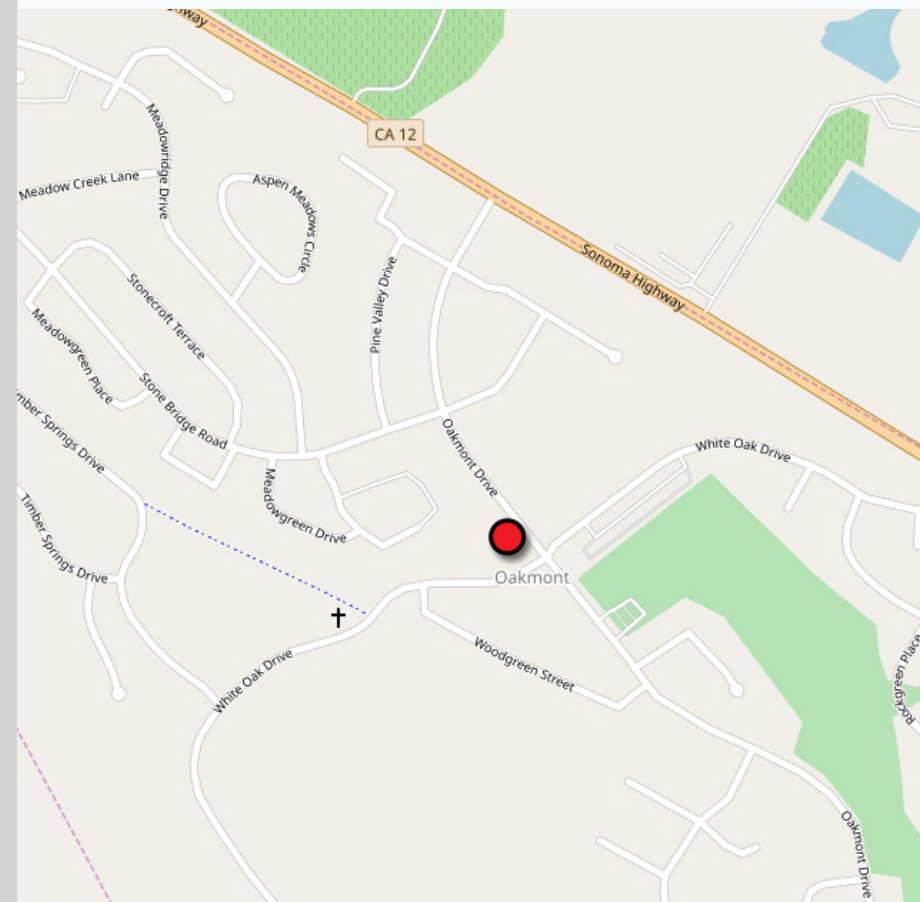
Located in Oakmont - senior active community, ten (12-15) minutes from downtown Santa Rosa.

NEARBY AMENITIES

- Three (3) minutes to two (2) Oakmont golf courses.
- Restaurants
- Wild Oak Saddle Club
- Real Estate Offices, Salons, DDS, Etc.
- Convenience Market & Deli
- Banks & Financial Services

TRANSPORTATION ACCESS

- Easy access to Hwy. 12.
- Bus stop nearby
- Polo field



PRESENTED BY:

DOUGLASS A. BRAIK, SREA
LIC # 00544642 (707) 528-1400, EXT 245
DBRAIK@KEEGANCOPPIN.COM



FLOOR PLAN



6570 OAKMONT DRIVE
SANTA ROSA, CA

OFFICE SPACE
144+/- SF



- AVAILABLE - SUITE 103
- COMMON AREA
- NOT AVAILABLE

Keegan & Coppin Co., Inc.
 1355 North Dutton Avenue
 Santa Rosa, CA 95401
www.keegancoppin.com
 (707) 528-1400

The above information, while not guaranteed, has been secured from sources we believe to be reliable. Submitted subject to error, change or withdrawal. An interested party should verify the status of the property and the information herein.

REPRESENTED BY:

DOUGLASS A. BRAIK, SREA
 LIC # 00544642 (707) 528-1400, EXT 245
DBRAIK@KEEGANCOPPIN.COM