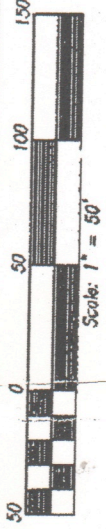
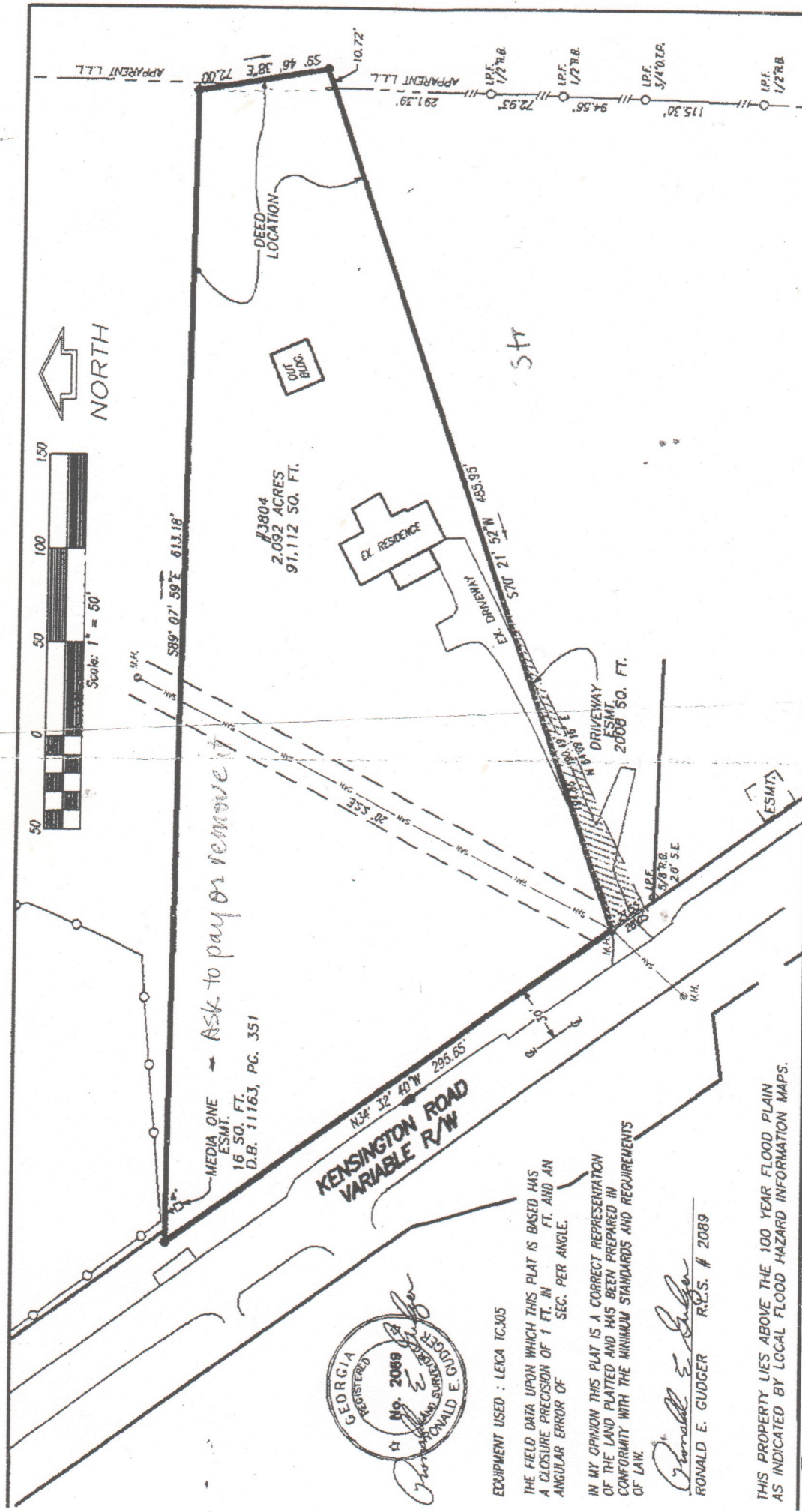


O&I  
RM85

Joint owning driveway

stream buffer - 75 ft from edge of creek



ASK TO PAYOR REMOVE IT

MEDIA ONE → ASK TO PAYOR REMOVE IT

16 SQ. FT. ESMT. D.B. 11163, PG. 351

KENSINGTON ROAD  
VARIABLE R/W



EQUIPMENT USED : LEICA TC305

THE FIELD DATA UPON WHICH THIS PLAT IS BASED HAS A CLOSURE PRECISION OF 1 FT. IN 100,000 FT. AND AN ANGULAR ERROR OF 1 SEC. PER ANGLE.

IN MY OPINION THIS PLAT IS A CORRECT REPRESENTATION OF THE LAND PLATED AND HAS BEEN PREPARED IN CONFORMITY WITH THE MINIMUM STANDARDS AND REQUIREMENTS OF LAW.

*Ronald E. Gudger*  
RONALD E. GUDGER R.L.S. # 2089

THIS PROPERTY LIES ABOVE THE 100 YEAR FLOOD PLAIN AS INDICATED BY LOCAL FLOOD HAZARD INFORMATION MAPS.

**GUDGER SURVEYING, INC.**  
LAND & ENGINEERING SURVEYS  
7000 PEACHTREE-DUNWOODY ROAD  
BUILDING 6, SUITE 250  
ATLANTA, GEORGIA 30328  
PH (770)396-8011 FAX (770)398-2379

SURVEY FOR  
**3804 KENSINGTON ROAD, LLC**  
L.L. 229, DISTRICT 15  
DEKALB COUNTY, GEORGIA

SURVEYED LW, TPO  
DRAWN RAM  
DWC. Kensington J804  
DATE JUNE 25, 2008

SOREN THOMAS