

BALLPARK VILLAGE | Broke Ground September 2025!

±1.47 Acres Available for Sale | NEC Estrella Parkway & Yuma Road, Goodyear, AZ

PROPERTY HIGHLIGHTS

- \$150M+ Development comprised of multi-family, entertainment, retail, restaurants and more!
- ± 27.43-Acre project comprised of 11 acres of retail, which includes The Rush Funplex, a 73,000 SF indoor family fun venue, and approximately 17.6 acres dedicated to two-gated multi-family development communities totaling 550 housing units on site.
- Just north of the Goodyear Ballpark - home of Spring Training for the Cincinnati Reds and Cleveland Guardians.
- Fulton Homes underway on a residential development at the SEC of the intersection slated for 796 single family homes.
- One mile west of the 2.7 million square foot Airpark Logistics Center.
- Well located less than 2 miles from the interchange I-10 & Loop 303 freeways



**CONCEPTUAL
OVERALL
SITE PLAN
RENDERING**

**27.43-ACRE
MIXED-USE
DEVELOPMENT**

D **DIVERSIFIED
PARTNERS**

Nationwide Real Estate Services

7339 E McDonald Drive
Scottsdale, AZ 85250
www.dpcrc.com

MARTI WEINSTEIN
Cell: 224.612.2332
marti@dpcrc.com

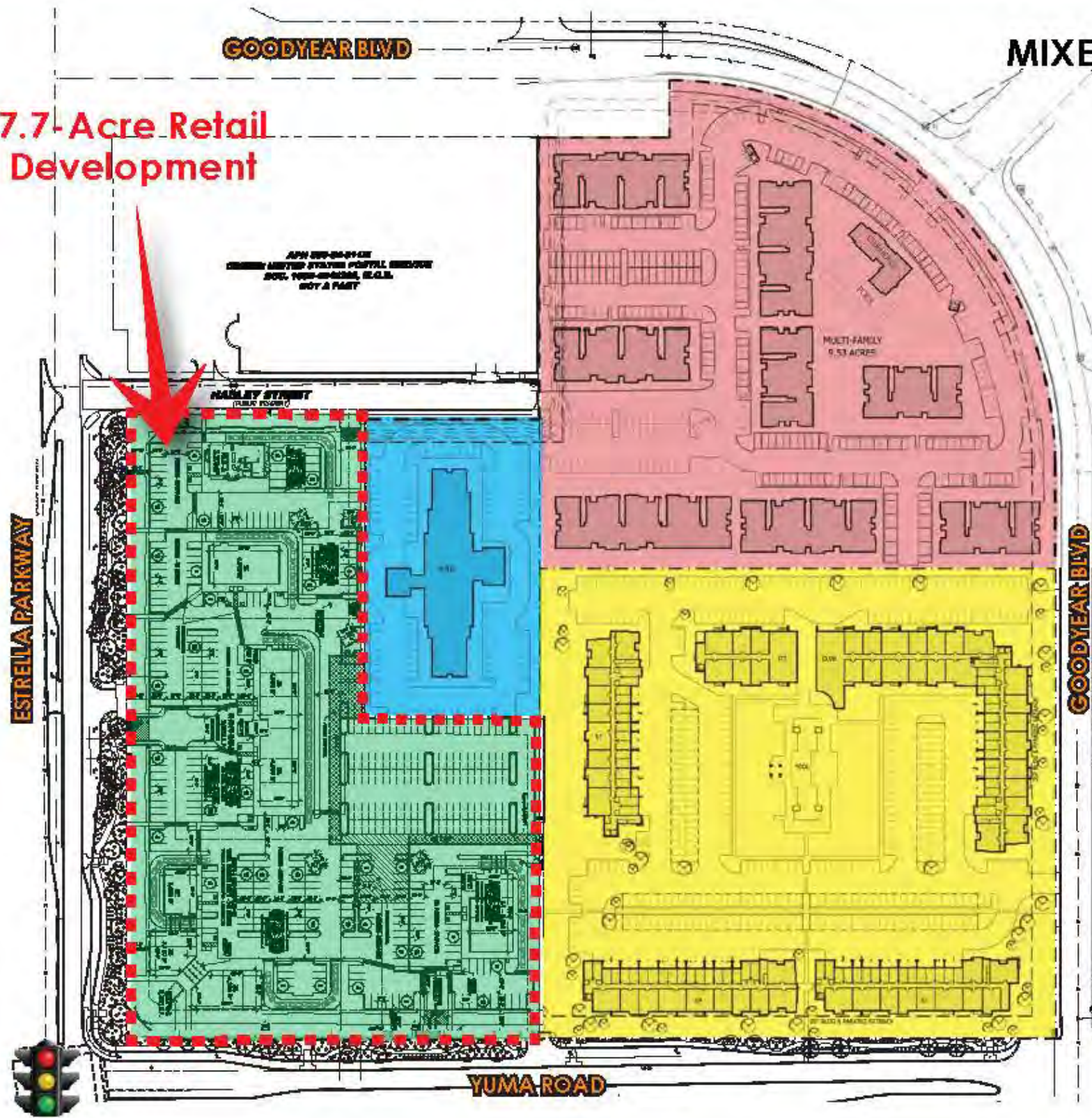
DELANEY MCGROARTY
Cell: 909.524.9669
delaney.mcgroarty@dpcrc.com

The information contained herein has been obtained from sources believed reliable. While we do not doubt its accuracy, we have not verified it and make no guarantee, warranty or representation about it. It is your responsibility to independently confirm its accuracy and completeness. Any projections, opinions, assumptions or estimates used for example only, and do not represent the current or future performance of the property. The value of this transaction to you depends on tax and other factors which should be evaluated by your tax, financial & legal advisors. You and your advisors should conduct a careful, independent investigation of the property to determine, to your satisfaction, the suitability of the property for your needs.

NEW 7.7-ACRE RETAIL DEVELOPMENT COMING Q2 2024

NEC Estrella Parkway & Yuma Road, Goodyear, AZ

7.7-Acre Retail Development



27.43-ACRE MIXED-USE DEVELOPMENT at Estrella Falls

RETAIL SITE
7.70 ACRES (335,804 SF)
BUILDING A REA:
SHOPS 1: 14,400 SF
SHOPS 2: 9,000 SF
SHOPS 3: 13,500 SF
PAD A: 3,200 SF
TOTAL BUILDING A REA: 40,100 SF
APPROX. PATIO AREA:
SHOPS 1: 800 SF
SHOPS 2: 1,600 SF
SHOPS 3: 1,000 SF
PAD A: 600 SF
TOTAL APPROX. PATIO AREA: 4,000 SF

HOTEL SITE
2.07 Acres (89,932 sf)
101 Rooms
101 Parking Spaces

MULTI-FAMILY SITE - A
3 Story Apartments
8.21 Acres (357,542 sf)
258 Units
9 Buildings
7 Apartment Buildings
Clubhouse
Leasing Office
439 Parking Spaces (1.7 spaces per unit)

MULTI-FAMILY SITE - B
4 Story Luxury Apartments
9.36 Acres (407,632 sf)
300+ Units
3 Buildings
Apartment Clubhouse
Pleasure Center
496 Parking Spaces
199 Surface | 184 Covered | 42 Garage | 51 Total



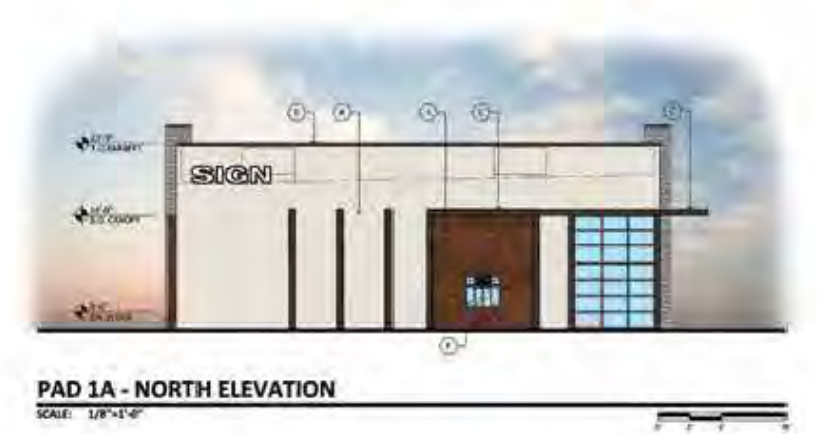
PAD 1A - WEST ELEVATION
SCALE: 1/8"=1'-0"



PAD 1A - EAST ELEVATION
SCALE: 1/8"=1'-0"



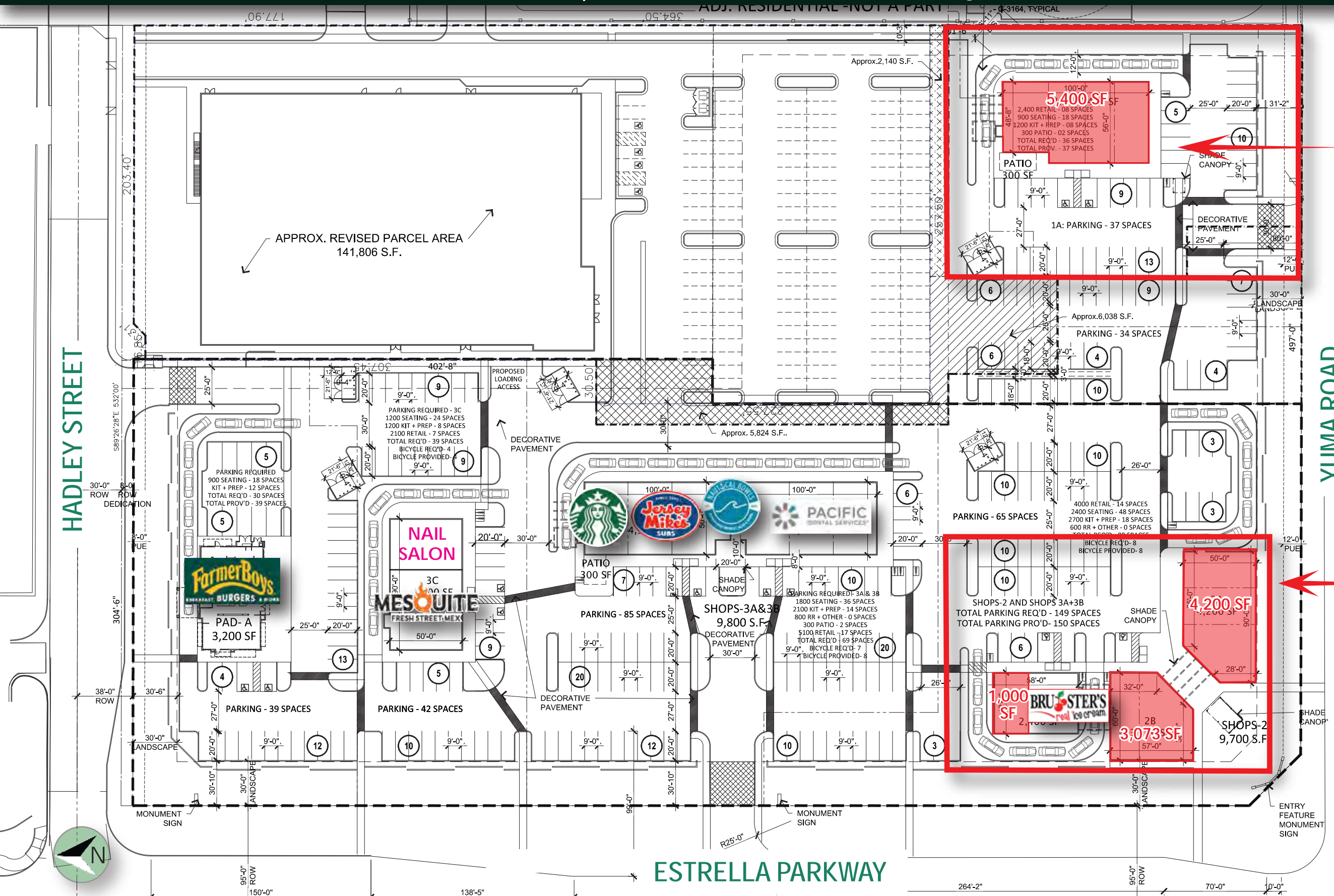
PAD 1A - SOUTH ELEVATION
SCALE: 1/8"=1'-0"



PAD 1A - NORTH ELEVATION
SCALE: 1/8"=1'-0"

OVERALL SITE PLAN
27.43-ACRE MIXED-USE DEVELOPMENT

BALLPARK VILLAGE | Broke Ground September 2025!
±1.47 Acres Available for Sale | NEC Estrella Parkway & Yuma Road, Goodyear, AZ



**AVAILABLE
FOR SALE, LEASE OR
GROUND LEASE
± 1.04 ACRES**

7.7-Acre Retail Development Conceptual Site Plan *Option 1*

**AVAILABLE
FOR LEASE
± 8,273**

MARTI WEINSTEIN
Cell: 224.612.2332
marti@dpcr.com

DELANEY MCGROARTY
Cell: 909.524.9669
delaney.mcgroarty@dpcrc.com

DIVERSIFIED PARTNERS

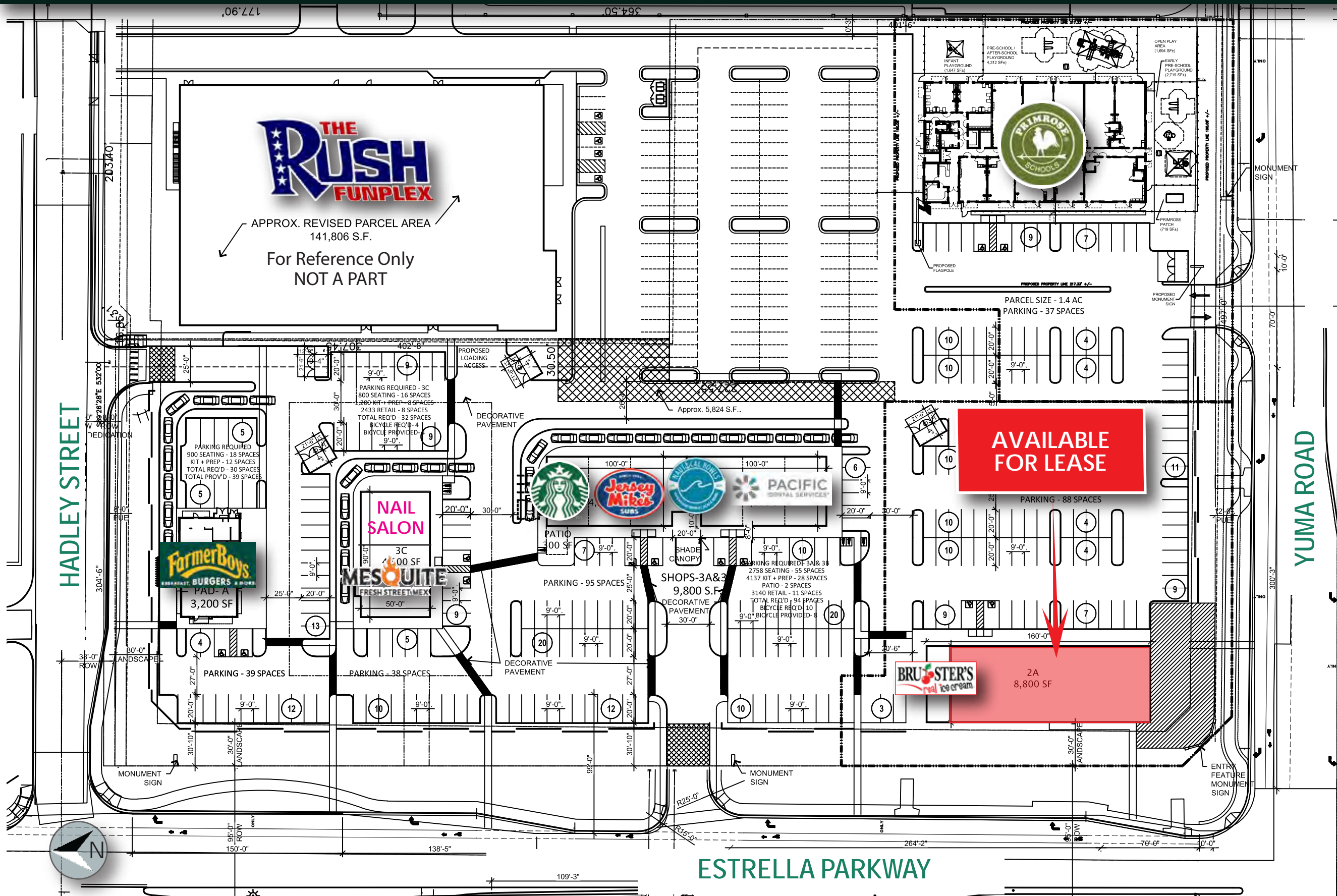
Nationwide Real Estate Services

The information contained herein has been obtained from sources believed reliable. While we do not doubt its accuracy, we have not verified it and make no guarantee, warranty or representation about it. It is your responsibility to independently confirm its accuracy and completeness. Any projections, opinions, assumptions or estimates used for example only, and do not represent the current or future performance of the property. The value of this transaction to you depends on tax and other factors which should be evaluated by your tax, financial & legal advisors. You and your advisors should conduct a careful, independent investigation of the property to determine, to your satisfaction, the suitability of the property for your needs.

7339 E McDonald Drive
Scottsdale, AZ 85250
www.dpcrc.com

NEW 7.7-ACRE RETAIL DEVELOPMENT COMING Q2 2024

NEC Estrella Parkway & Yuma Road, Goodyear, AZ



7.7-Acre Retail Development Conceptual Site Plan Option 2

MARTI WEINSTEIN
Cell: 224.612.2332
marti@dpcr.com

DELANEY McGROARTY
Cell: 909.524.9669
delaney.mcgroarty@dpcr.com



Nationwide Real Estate Services

7339 E McDonald Drive
Scottsdale, AZ 85250
www.dpcr.com

The information contained herein has been obtained from sources believed reliable. While we do not doubt its accuracy, we have not verified it and make no guarantee, warranty or representation about it. It is your responsibility to independently confirm its accuracy and completeness. Any projections, opinions, assumptions or estimates used for example only, and do not represent the current or future performance of the property. The value of this transaction to you depends on tax and other factors which should be evaluated by your tax, financial & legal advisors. You and your advisors should conduct a careful, independent investigation of the property to determine, to your satisfaction, the suitability of the property for your needs.

NEW 7.7-ACRE RETAIL DEVELOPMENT COMING Q2 2024
NEC Estrella Parkway & Yuma Road, Goodyear, AZ



4-STORY LUXURY APARTMENT DEVELOPMENT RENDERING



3-STORY LUXURY APARTMENT DEVELOPMENT RENDERING



RESTAURANT PATIO RENDERING



RESTAURANT PATIO RENDERING

JANUARY 2024

GOODYEAR
BY THE NUMBERS

Total Acres

122,369

Total Square Miles

191.2

Total Population
age 15 and over
within 30 minute drive time

1.36 M

Professional Workers
management, business,
sales, office

66.4%

Education Attainment
population 25 years and older

36.6%

Some College or
Associate Degree

35.9 %


Bachelor Degree
or Higher

Days of Sunshine

300+



DEMOGRAPHICS



Population

111,508

Median Age


37.4

Male

50.6 %

Female

49.3 %



Total Housing Units

43,650


Median Home Value

\$398,993

Single-Family
Home Permits

6,777

5 year total
(2019 thru 2023)



Median Household Income

\$100,538

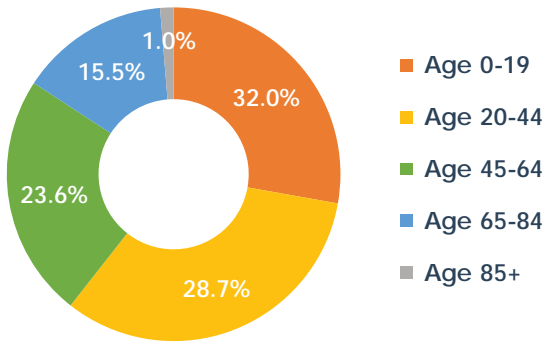
Mean Household Income

\$128,835

Median Gross Rent

\$1,642

POPULATION BY AGE



WORKER COMMUTE FLOWS



TOP EMPLOYERS BY # OF JOBS

Amazon (multiple facilities)	4,900
UPS Regional Operations Center	2,309
Chewy	1,200
Abrazo West Campus	1,200
Macy's Global Supply Chain	1,085
Sub-Zero, Wolf and Cove	805
City of Hope	508
Anderson Windows	429
AerSale	372
REI (Recreational Equipment, Inc.)	371
McLane Sunwest	309
Dicks Sporting Goods	300

WORKFORCE OCCUPATIONS

Management, Business, Financial, Professional	45.6%
Sales, Administrative Support	20.7%
Service (healthcare, fire/police, personal care, food)	14.4%
Production, Transport, Material Moving	12.6%
Natural Resources, Construction, Maintenance	6.7%

EDUCATION

Elementary: 4 districts, 13 in Goodyear, 34 in districts

High School: 2 districts, 3 in Goodyear, 10 in districts

Private & Charter: 3 private, 7 charter schools

Higher Ed: Local - Franklin Pierce University, Estrella Mtn. Community College, Commercial Divers International, Unmanned Vehicle University, United Aviate Academy; Regional - ASU, Arizona Christian University, DeVry Univ., Grand Canyon Univ., Midwestern Univ., Ottawa Univ., Park Univ., Thunderbird School of Global Mgmt, Universal Technical Institute, University of Phoenix

RESIDENTIAL HOUSING GROWTH

Single-Family Permits

Single-family permits have averaged over 1,300 new homes per year to keep up with significant growth in Goodyear.

6,777

5 year total | 2019-2023

Year	# Permits	Y/Y Change
2019	1,435	+20.9%
2020	1,697	+18.3%
2021	1,799	+6.0%
2022	902	-49.9%
2023	944	+4.7%

Source: Goodyear Development Services – January 2024

West Valley City Comparison

Goodyear is one of the fastest growing West Valley cities in Arizona with a combined total of over 41,000 single-family home permits being issued over the last 5 years.

41,248

5 year total | 2019-2023

City	2019-2023
Buckeye	12,704
Surprise	11,159
Goodyear	6,777
Peoria	4,965
Avondale	3,418
Glendale	2,225

Source: Home Builders Association of America – January 2024

Multi-family Permits

Multi-family units, including apartment building units and detached luxury rentals, nearly doubled in 2023 over the previous year.

1,759

2023 total units | +89% year over year
(2022 - 931 total units)

Source: Goodyear Development Services – January 2024

You're in
Good
company.

DIVERSIFIED
PARTNERS

Nationwide Real Estate Services

BALLPARK VILLAGE | ±1.47 Acres Available for Sale | NEC Estrella Parkway & Yuma Road, Goodyear, AZ

DEMOGRAPHICS 2025

Source: Sites USA

ESTIMATED POPULATION

11,218	67,311	149,703
1 MI	3 MI	5 MI

ESTIMATED POPULATION (2030)

11,692	72,885	158,018
1 MI	3 MI	5 MI

AVERAGE HH INCOME

\$120,753	\$1115,435	\$120,466
1 MI	3 MI	5 MI

AVERAGE HH INCOME (2030)

\$118,753	\$113,774	\$118,279
1 MI	3 MI	5 MI

MEDIAN AGE

32.8	34.3	36.0
1 MI	3 MI	5 MI

TRAFFIC COUNTS

Source: Sites USA

ESTRELLA PKWY	22,182 VPD
YUMA RD	11,580 VPD
I-10	150,140 VPD



MARTI WEINSTEIN | Cell: 224.612.2332 | marti@dpcrc.com
DELANEY MCGROARTY | Cell: 909.524.9669 | delaney.mcgroarty@dpcrc.com

7339 E McDonald Drive
Scottsdale, AZ 85250
www.dpcre.com

DIVERSIFIED PARTNERS

Nationwide Real Estate Services