



FOR SALE



**PRICE REDUCED
TO \$699,000!**

4340 SW 110TH AVENUE

Available Office Space

± 2,192 SF | \$699,000

4340 SW 110th Ave, Beaverton, OR 97005

- Situated in Beaverton's thriving business district with excellent exposure and easy access to major transportation routes
- Private paved parking lot at the rear of the building
- Located across from Home Depot and close to major retailers and service providers, ensuring strong business presence and convenience

DANIEL SAYLES, SIOR

Senior Associate Broker | Licensed in OR & WA

503-542-4351

dsayles@capacitycommercial.com

DANIEL HELM, SIOR

Senior Vice President | Licensed in OR & WA

503-789-5750

dhelm@capacitycommercial.com

MARK CHILDS, SIOR

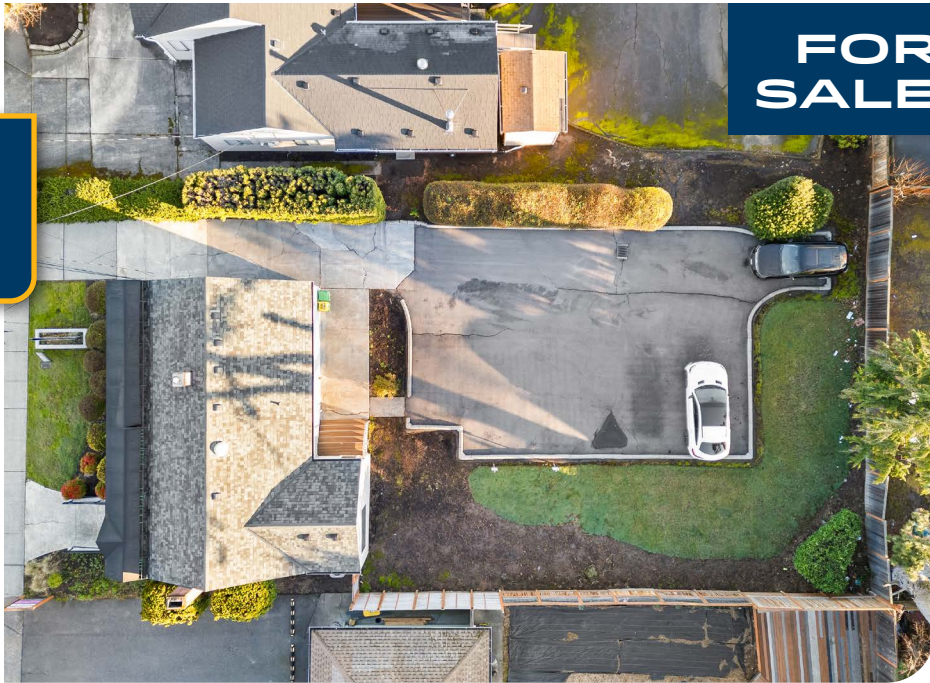
Principal | Licensed in OR & WA

503-542-4350

markc@capacitycommercial.com



PROPERTY SUMMARY



**FOR
SALE**

PROPERTY DETAILS

| | |
|-----------------|--|
| Address | 4340 SW 110th Ave, Beaverton, OR 97005 |
| Available Space | 2,192 SF |
| Lot Size | 8,700 SF |
| Zoning | CBD – Community Business District (Washington County) |
| Sale Price | \$699,000 |

Location Features

- Frontage on SW 110th Avenue
- In close proximity to Highway-217 and Highway-26
- Adjacent to Home Depot

Nearby Highlights

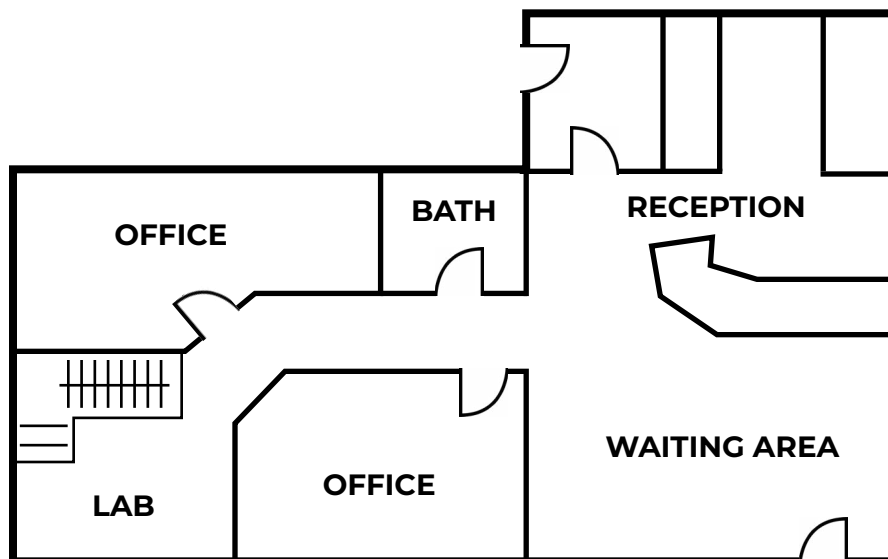
- Afuri
- Ava Roasteria
- Bank of America
- Beaverton Farmers Market
- Big's Chicken
- Carina's Bakery
- Ex Novo Brewing Company
- Fred Meyer
- Giovanni's
- Home Depot
- Loyal Legion Beer Hall
- Mingo
- Orangetheory Fitness
- Peet's Coffee
- Raindrop Tap House
- Sizzle Pie
- Starbucks
- Trader Joe's





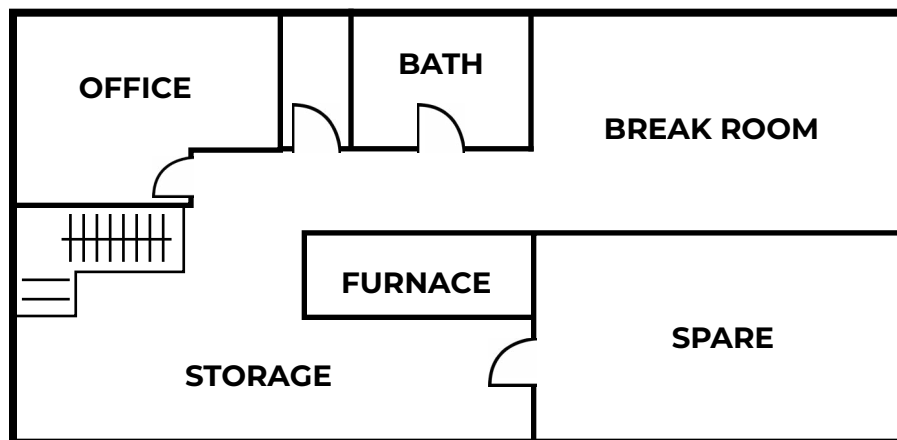
FLOOR PLAN

MAIN LEVEL



*Not to Scale

BASEMENT



*Not to Scale



INTERIOR PHOTOS



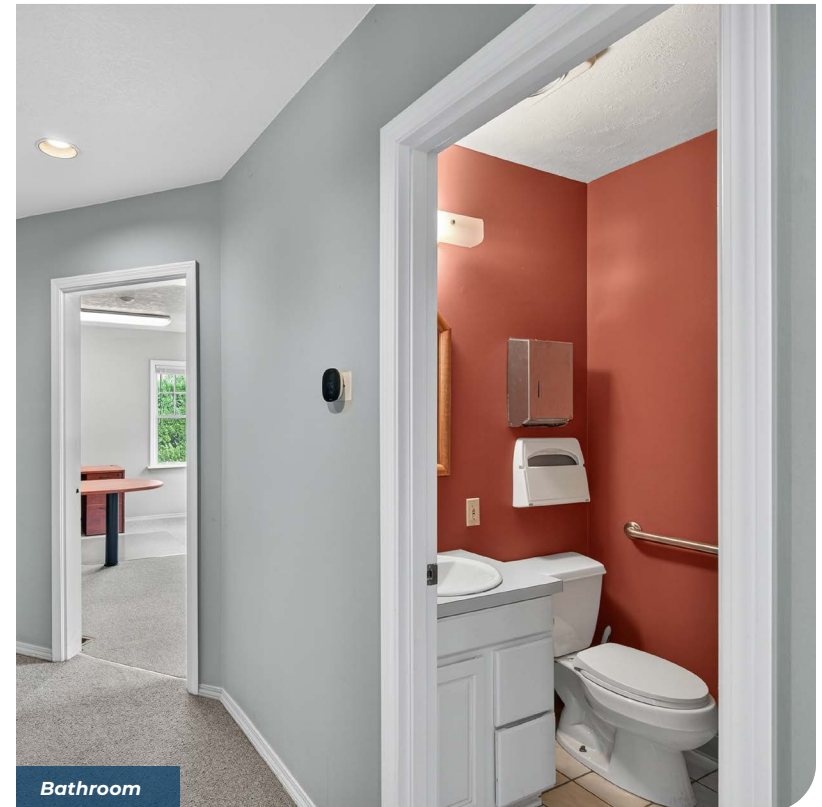
Reception



Office



Office



Bathroom



INTERIOR PHOTOS



Office



Basement Office



Office



Basement Storage



LOCAL AERIAL MAP



*Average Daily Traffic Volume | Traffic Counts are Provided by REGIS Online at SitesUSA.com ©2025 | Map data ©2025 Google Imagery ©2025, Airbus, CNES / Airbus, Maxar Technologies, Metro, Portland Oregon, Public Laboratory, State of Oregon, U.S. Geological Survey, USDA/FPAC/GEO

DANIEL SAYLES, SIOR
Senior Associate Broker | OR & WA
503-542-4351
dsayles@capacitycommercial.com

DANIEL HELM, SIOR
Senior Vice President | OR & WA
503-789-5750
dhelm@capacitycommercial.com

MARK CHILDS, SIOR
Principal | OR & WA
503-542-4350
markc@capacitycommercial.com