



FOR LEASE

521 NW ENGLEWOOD ROAD, KANSAS CITY, MO

GREAT OPPORTUNITY OFF 169 HWY



Great Retail/Office Space Available

- This great space offers excellent visibility and high foot traffic, making it ideal for both office and retail use.
- With ample parking, it's ready to accommodate your business needs.
- Don't miss this opportunity to establish your presence in a thriving community.

\$1,500 per month includes
Base Rent and NNN
865 sq ft

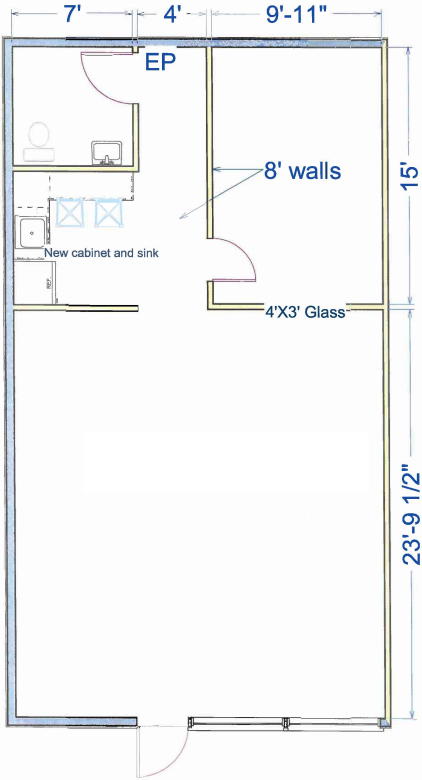
Tenant Responsible for Utilities



Matt Pepper • 816-414-5228 • mpepper@curryre.com
2700 Kendallwood Pkwy., Gladstone, MO 64119
www.curryre.com



521 NW ENGLEWOOD ROAD, KANSAS CITY, MO



Total Population
 1-mile: 10,139
 3-mile: 74,110
 5-mile: 165,353



Median Home Value
 1-mile: \$245,539
 3-mile: \$199,324
 5-mile: \$214,546



Household Income (Avg.)
 1-mile: \$ 75,850
 3-mile: \$ 80,865
 5-mile: \$ 84,047



Easy Highway Access



All information furnished regarding property for sale or lease is from sources deemed reliable, but no warranty or representation is made as to the accuracy thereof and the same is subject to errors, omissions, changes of prices, rental or other conditions, prior sale or lease or withdrawal without notice.



CURRY

Real Estate Services

Matt Pepper • 816-414-5228 • mpepper@curryre.com
 2700 Kendallwood Pkwy., Gladstone, MO 64119
 www.curryre.com