

CHARLESTON OFFICE PARK

2915 W. Charleston Blvd. | Las Vegas, NV 89102



BRUCE FOLLMER

President / Broker | Lic.# B.0018023

JUSTIN MICHAELS

Vice President | Lic.# S.0068221

📍 1129 S. Casino Center Blvd. | Las Vegas, NV 89104 📞 702.347.7777 🌐 mfrenv.com



Disclaimer: The information above has been obtained from sources believed reliable. While we do not doubt its accuracy, we have not verified it and make no guarantee, warranty or representation about it. It is your responsibility to independently confirm its accuracy and completeness. Any projections, opinions, assumptions or estimates used are for example only and do not represent the current or future performance of the property. The value of this transaction to you depends on tax and other factors which should be evaluated by your tax, financial and legal advisors. You and your advisors should conduct a careful, independent investigation of the property to determine for your satisfaction the suitability of the property for your needs. This information has been prepared exclusively for the clients of Michaels Follmer Real Estate (MFRE) and is confidential. It is the property of MFRE, and reproduction of any portion without the written consent of MFRE is strictly prohibited.



PROPERTY DETAILS

- Suite 150 & 155: 3,126 SF lease space available 12.1.24
- Suite 125 & 130: 2,986 SF lease space available immediately
- Leasing for \$1.55 PSF/NNN
- NNN charges of \$.45 PSF/mo (includes utilities)
- 3 to 5 year lease terms
- Ideal for medical and professional office, conveniently located near UMC and Valley Hospitals
- Built out, ready for immediate occupancy
- Ample parking
- 1 mile from I-15 and West Charleston

BRUCE FOLLMER

President / Broker | Lic.# B.0018023

JUSTIN MICHAELS

Vice President | Lic.# S.0068221

📍 1129 S. Casino Center Blvd. | Las Vegas, NV 89104 📞 702.347.7777 🌐 mfrenv.com



Disclaimer: The information above has been obtained from sources believed reliable. While we do not doubt its accuracy, we have not verified it and make no guarantee, warranty or representation about it. It is your responsibility to independently confirm its accuracy and completeness. Any projections, opinions, assumptions or estimates used are for example only and do not represent the current or future performance of the property. The value of this transaction to you depends on tax and other factors which should be evaluated by your tax, financial and legal advisors. You and your advisors should conduct a careful, independent investigation of the property to determine for your satisfaction the suitability of the property for your needs. This information has been prepared exclusively for the clients of Michaels Follmer Real Estate (MFRE) and is confidential. It is the property of MFRE, and reproduction of any portion without the written consent of MFRE is strictly prohibited.

FLOOR PLAN



- LEASED

BRUCE FOLLMER
President / Broker | Lic.# B.0018023

JUSTIN MICHAELS
Vice President | Lic.# S.0068221

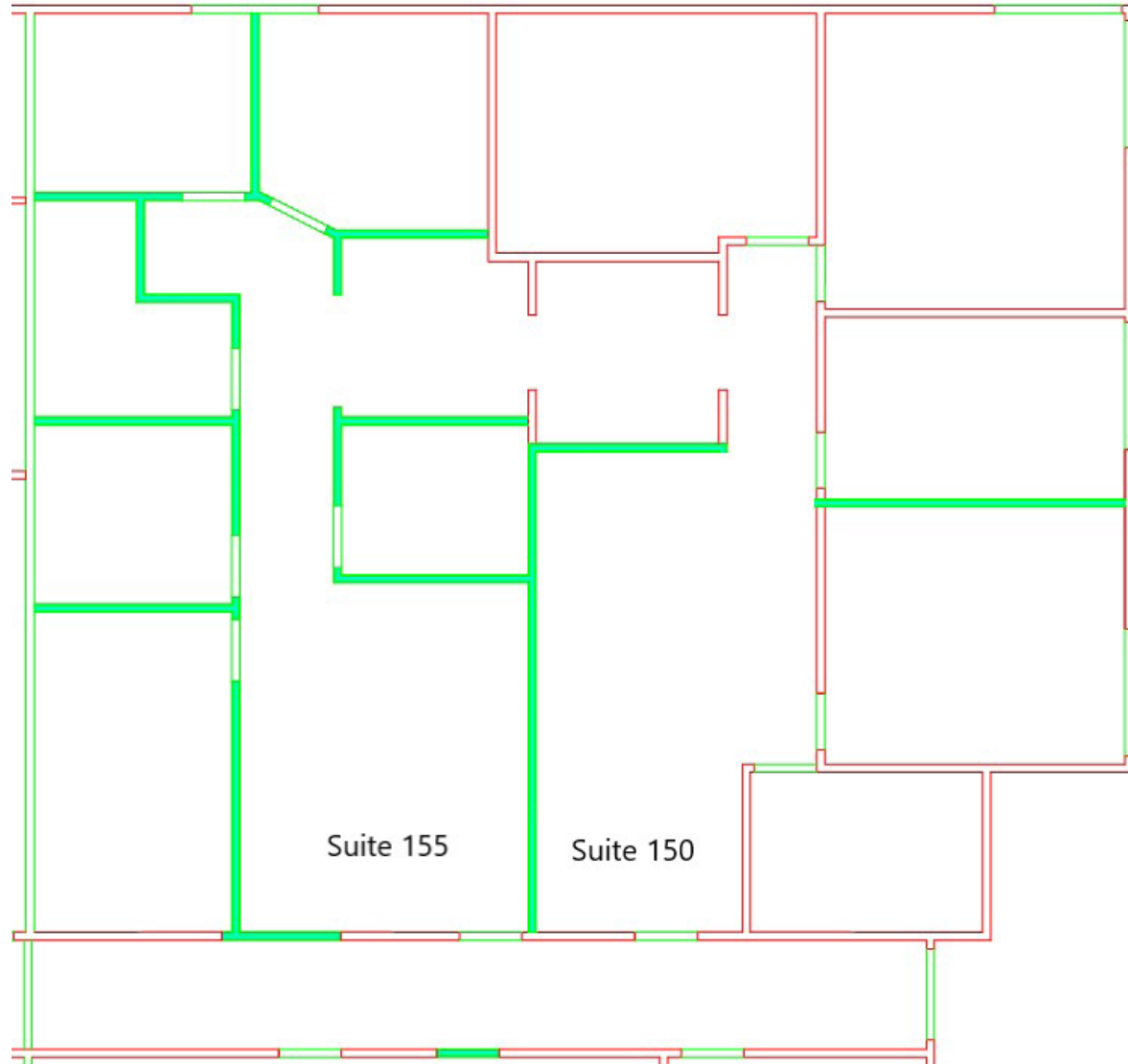
📍 1129 S. Casino Center Blvd. | Las Vegas, NV 89104 📞 702.347.7777 🌐 mfrenv.com



Disclaimer: The information above has been obtained from sources believed reliable. While we do not doubt its accuracy, we have not verified it and make no guarantee, warranty or representation about it. It is your responsibility to independently confirm its accuracy and completeness. Any projections, opinions, assumptions or estimates used are for example only and do not represent the current or future performance of the property. The value of this transaction to you depends on tax and other factors which should be evaluated by your tax, financial and legal advisors. You and your advisors should conduct a careful, independent investigation of the property to determine for your satisfaction the suitability of the property for your needs. This information has been prepared exclusively for the clients of Michaels Follmer Real Estate (MFRE) and is confidential. It is the property of MFRE, and reproduction of any portion without the written consent of MFRE is strictly prohibited.

FLOOR PLAN

Suite 155 & 150



BRUCE FOLLMER

President / Broker | Lic.# B.0018023

JUSTIN MICHAELS

Vice President | Lic.# S.0068221

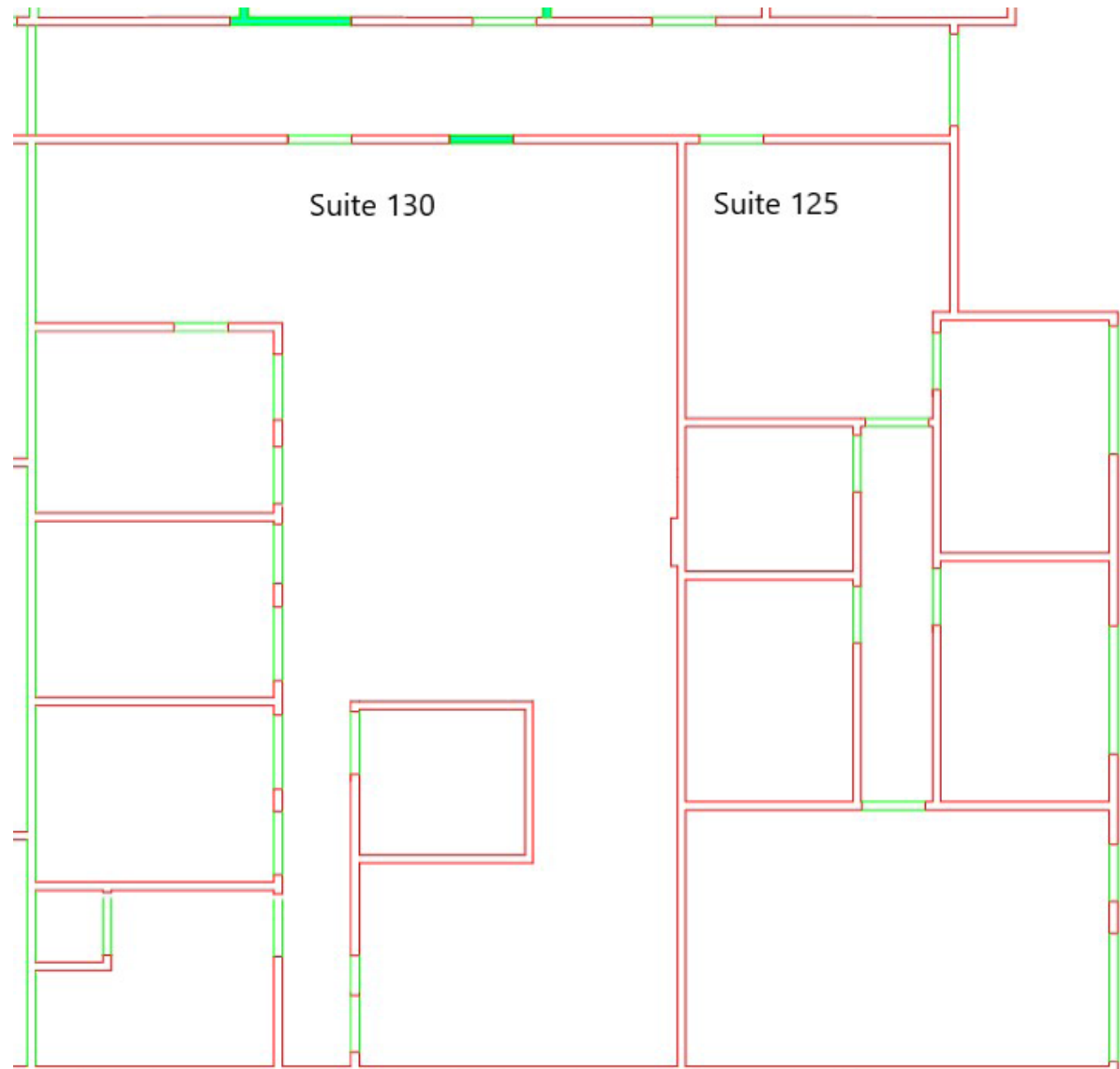
📍 1129 S. Casino Center Blvd. | Las Vegas, NV 89104 📞 702.347.7777 🌐 mfrenv.com



Disclaimer: The information above has been obtained from sources believed reliable. While we do not doubt its accuracy, we have not verified it and make no guarantee, warranty or representation about it. It is your responsibility to independently confirm its accuracy and completeness. Any projections, opinions, assumptions or estimates used are for example only and do not represent the current or future performance of the property. The value of this transaction to you depends on tax and other factors which should be evaluated by your tax, financial and legal advisors. You and your advisors should conduct a careful, independent investigation of the property to determine for your satisfaction the suitability of the property for your needs. This information has been prepared exclusively for the clients of Michaels Follmer Real Estate (MFRE) and is confidential. It is the property of MFRE, and reproduction of any portion without the written consent of MFRE is strictly prohibited.

FLOOR PLAN

Suite 125 & 130



BRUCE FOLLMER

President / Broker | Lic.# B.0018023

JUSTIN MICHAELS

Vice President | Lic.# S.0068221

📍 1129 S. Casino Center Blvd. | Las Vegas, NV 89104 📞 702.347.7777 🌐 mfrenv.com



Disclaimer: The information above has been obtained from sources believed reliable. While we do not doubt its accuracy, we have not verified it and make no guarantee, warranty or representation about it. It is your responsibility to independently confirm its accuracy and completeness. Any projections, opinions, assumptions or estimates used are for example only and do not represent the current or future performance of the property. The value of this transaction to you depends on tax and other factors which should be evaluated by your tax, financial and legal advisors. You and your advisors should conduct a careful, independent investigation of the property to determine for your satisfaction the suitability of the property for your needs. This information has been prepared exclusively for the clients of Michaels Follmer Real Estate (MFRE) and is confidential. It is the property of MFRE, and reproduction of any portion without the written consent of MFRE is strictly prohibited.

SURROUNDING AREA



RANCHO TOWN & COUNTRY

Smith's
FOOD & DRUG STORES

Roberto's
RESTAURANT

PORT OF SUBS
Sliced Fresh Sandwiches!

ups

STARBUCKS
COFFEE

HORIZON SPECIALTY HOSPITAL

VALLEY HEALTH SYSTEMS



BANK OF AMERICA

UMC HOSPITAL

UNLV SCHOOL OF MEDICINE

UNITED HEALTHCARE

OMELET HOUSE

UNLV HEALTHCARE CAMPUS

W CHARLESTON BLVD.

LE THAI 2

CVS PHARMACY

CHASE BANK

CHARLESTON OFFICE PARK

BRUCE FOLLMER

President / Broker | Lic.# B.0018023

JUSTIN MICHAELS

Vice President | Lic.# S.0068221

📍 1129 S. Casino Center Blvd. | Las Vegas, NV 89104 📞 702.347.7777 🌐 mfrenv.com



Disclaimer: The information above has been obtained from sources believed reliable. While we do not doubt its accuracy, we have not verified it and make no guarantee, warranty or representation about it. It is your responsibility to independently confirm its accuracy and completeness. Any projections, opinions, assumptions or estimates used are for example only and do not represent the current or future performance of the property. The value of this transaction to you depends on tax and other factors which should be evaluated by your tax, financial and legal advisors. You and your advisors should conduct a careful, independent investigation of the property to determine for your satisfaction the suitability of the property for your needs. This information has been prepared exclusively for the clients of Michaels Follmer Real Estate (MFRE) and is confidential. It is the property of MFRE, and reproduction of any portion without the written consent of MFRE is strictly prohibited.