

1545-1645 HOLMES ROAD
YPSILANTI, MICHIGAN

RETAIL FOR LEASE
2,000 - 9,000 Square Feet Available



**SIGNATURE
ASSOCIATES**
KNOW SIGNATURE | KNOW RESULTS

SUNRISE SHOPPING CENTER



PROPERTY FEATURES

- 2,000 - 9,000 square feet available
- Perfect for retail, office or medical uses
- Join 12 established tenants including Shoppers Marketplace, Dollar Tree and more
- Significant parking with ideal visibility
- Lease Rate:
 - 1625 Holmes Road: \$3,750/month Gross
 - 1647 Holmes Road: \$5,980/month Gross



For more information, please contact:

DRAKE FILIPPIS

(248) 799 3161

dfilippis@signatureassociates.com

MARVIN PETROUS

(248) 359 0647

mpetrous@signatureassociates.com

SIGNATURE ASSOCIATES

One Towne Square, Suite 1200

Southfield, MI 48076

www.signatureassociates.com

Information is subject to verification and no liability for errors or omissions is assumed. Price is subject to change and listing withdrawal.

1545 – 1645 Holmes Road – Ypsilanti, Michigan

Retail For Lease

2,000 - 9,000
Square Feet
AVAILABLE

Interior Photos



For more information, please contact:

DRAKE FILIPPIS

(248) 799 3161

dfilippis@signatureassociates.com

MARVIN PETROUS

(248) 359 0647

mpetrous@signatureassociates.com

SIGNATURE ASSOCIATES

One Towne Square, Suite 1200

Southfield, MI 48076

www.signatureassociates.com

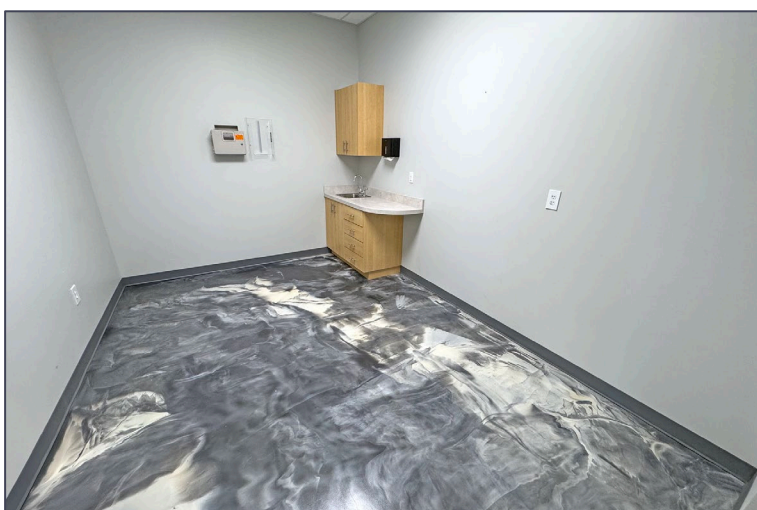
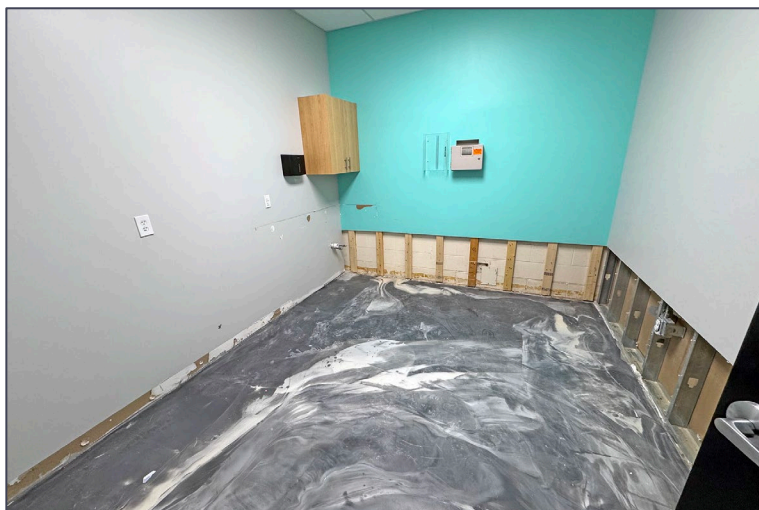
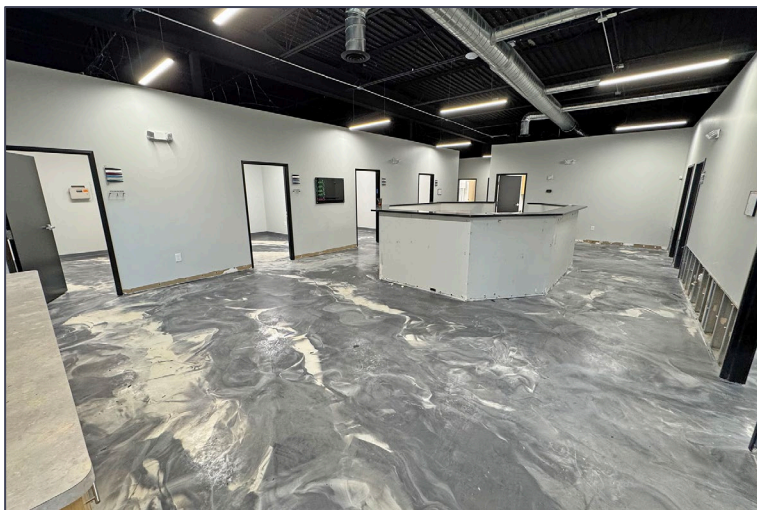
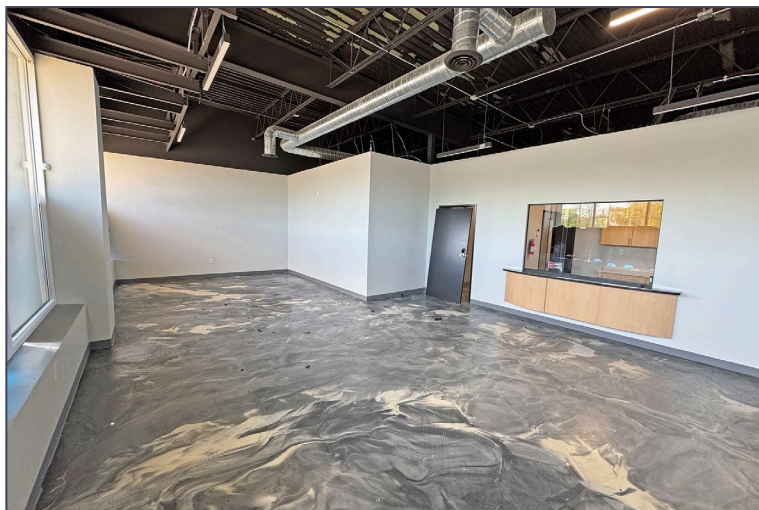
Information is subject to verification and no liability for errors or omissions is assumed. Price is subject to change and listing withdrawal.

1545 – 1645 Holmes Road – Ypsilanti, Michigan

Retail For Lease

2,000 - 9,000
Square Feet
AVAILABLE

Interior Photos



For more information, please contact:

DRAKE FILIPPIS

(248) 799 3161

dfilippis@signatureassociates.com

MARVIN PETROUS

(248) 359 0647

mpetrous@signatureassociates.com

SIGNATURE ASSOCIATES

One Towne Square, Suite 1200

Southfield, MI 48076

www.signatureassociates.com

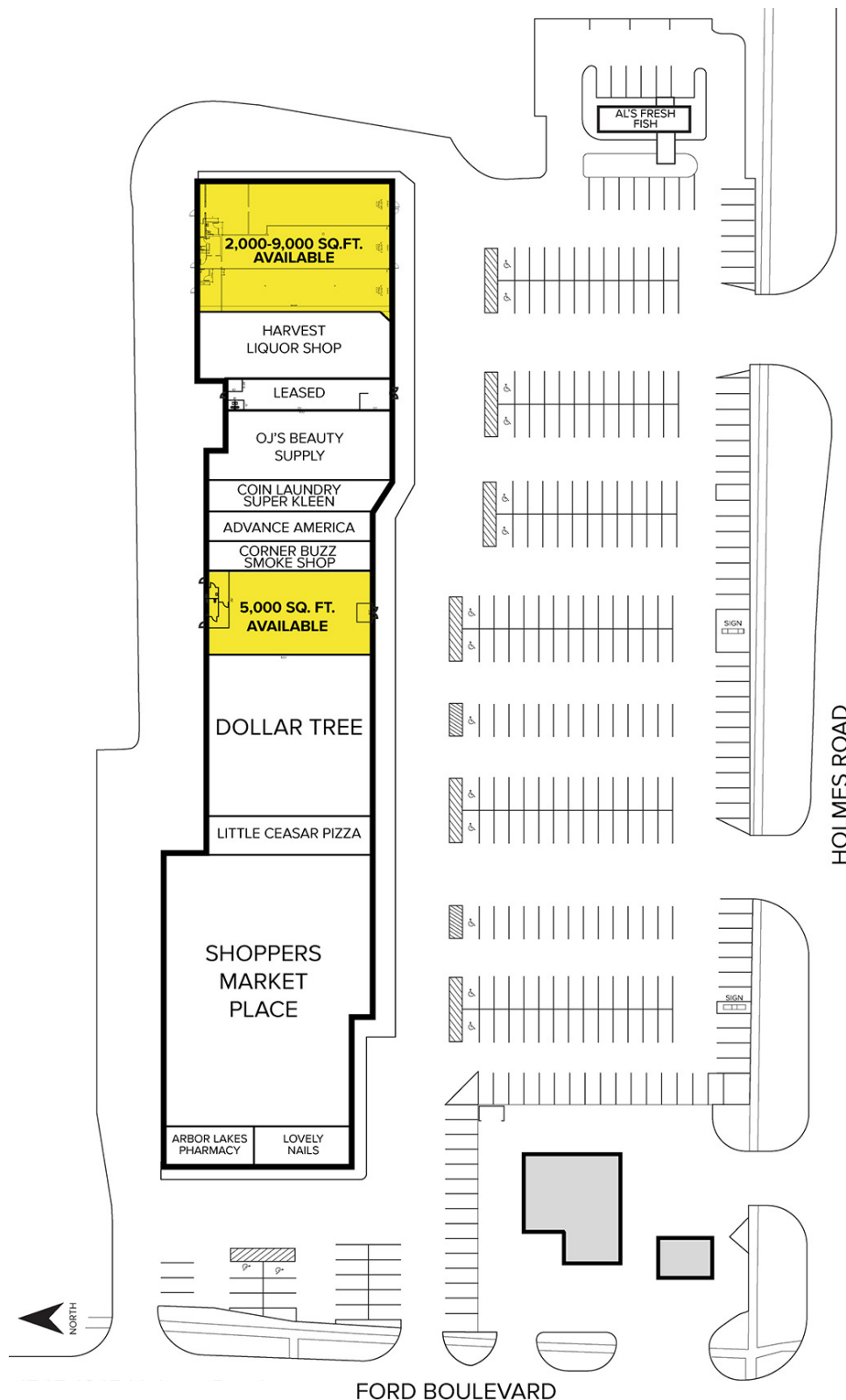
Information is subject to verification and no liability for errors or omissions is assumed. Price is subject to change and listing withdrawal.

1545 – 1645 Holmes Road – Ypsilanti, Michigan

Retail For Lease

2,000 - 9,000
Square Feet
AVAILABLE

Site Plan



For more information, please contact:

DRAKE FILIPPIS

(248) 799 3161

dfilippis@signatureassociates.com

MARVIN PETROUS

(248) 359 0647

mpetrous@signatureassociates.com

SIGNATURE ASSOCIATES

One Towne Square, Suite 1200

Southfield, MI 48076

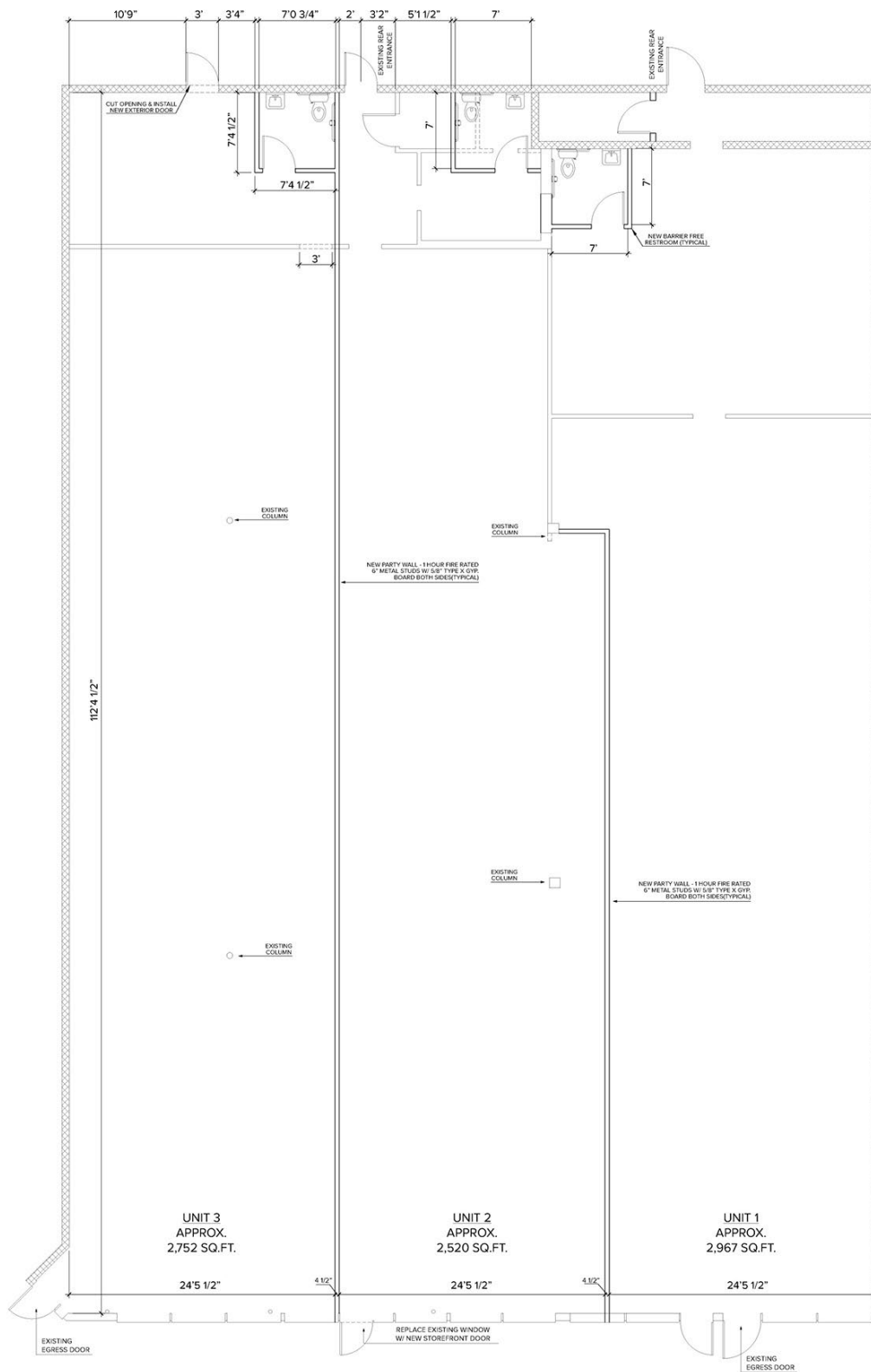
www.signatureassociates.com

1545 – 1645 Holmes Road – Ypsilanti, Michigan

Retail For Lease

2,000 - 9,000
Square Feet
AVAILABLE

Floor Plan



For more information, please contact:

DRAKE FILIPPIS

(248) 799 3161

dfilippis@signatureassociates.com

MARVIN PETROUS

(248) 359 0647

mpetrous@signatureassociates.com

SIGNATURE ASSOCIATES

One Towne Square, Suite 1200

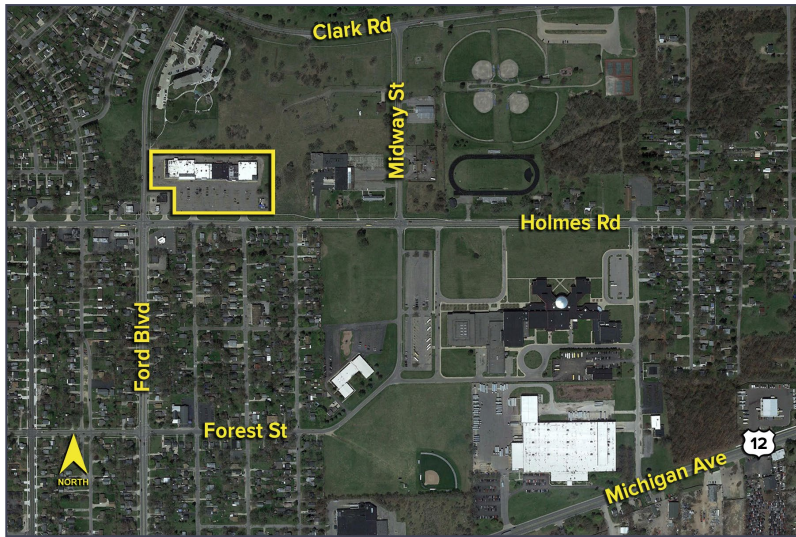
Southfield, MI 48076

www.signatureassociates.com

1545 – 1645 Holmes Road – Ypsilanti, Michigan

Retail For Lease

2,000 - 9,000
Square Feet
AVAILABLE



DEMOGRAPHICS

	POPULATION	MED. HH INCOME
1 MILE	8,950	\$56,192
3 MILE	55,484	\$64,510
5 MILE	123,771	\$83,472

TRAFFIC COUNTS (TWO-WAY)

8,298	Ford Blvd. N. of Holmes St.
9,427	Ford Blvd. S. of Holmes St.
3,979	Holmes Rd. W. of Ford Blvd.
3,027	Holmes Rd. E. of Ford Blvd.



For more information, please contact:

DRAKE FILIPPIS

(248) 799 3161

dfilippis@signatureassociates.com

MARVIN PETROUS

(248) 359 0647

mpetrous@signatureassociates.com

SIGNATURE ASSOCIATES

One Towne Square, Suite 1200

Southfield, MI 48076

www.signatureassociates.com