

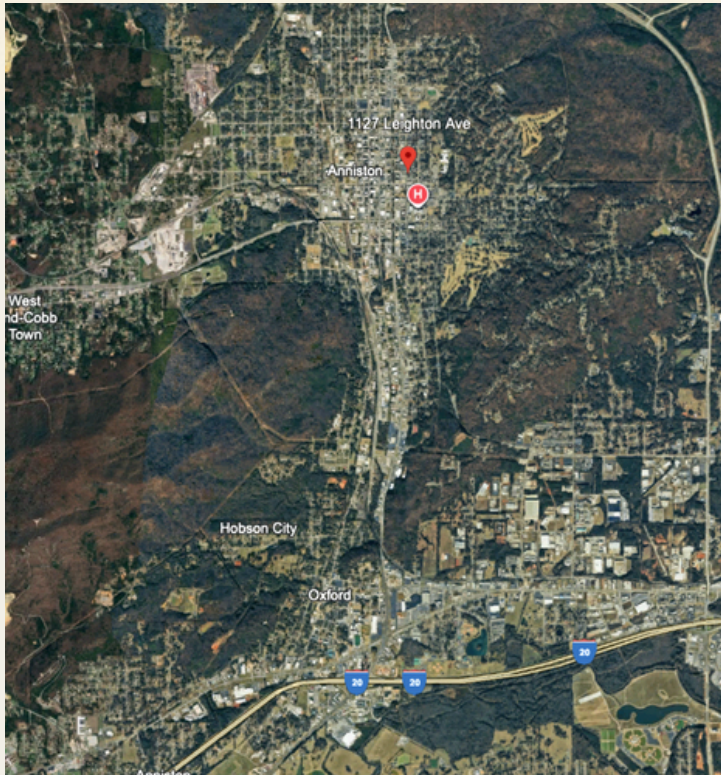
FOR SALE

1127 Leighton Ave
Anniston, AL 36207



Lightpoint

A Healthcare Real Estate Firm



Offering Summary

List Price:	\$299,000
Building Size:	~2,000sf
Lot Size:	0.3 acres

Property Highlights:

- Prime location with strong visibility and easy access to major roadways
- Flexible layout featuring reception area and multiple private rooms
- Existing plumbing in select rooms ideal for medical, wellness, or service uses
- Move-in-ready space with a clean, modern, professional appearance
- Ample on-site parking for both clients and staff

Kyle Church

c: 205.919.1528

e: kyle@lightpointcre.com



Your Legacy Awaits

FOR SALE

1127 Leighton Ave
Anniston, AL 36207



Lightpoint

A Healthcare Real Estate Firm

Property Photos



Kyle Church

c: 205.919.1528

e: kyle@lightpointcre.com



Your Legacy Awaits

FOR SALE

1127 Leighton Ave
Anniston, AL 36207



Ideal for Medical or Office Use

This well-maintained commercial property is located in a high-traffic area with excellent visibility and accessibility. The interior layout includes a reception area and multiple private rooms, offering a practical setup for medical, wellness, beauty, or office-based businesses.

As a former dental office, the existing plumbing in rooms adds efficiency for operations requiring water access, while the overall design provides flexibility to accommodate various service-oriented uses. The space offers a professional environment with modern finishes and a functional flow.

Ample parking and proximity to major corridors make the location convenient for daily operations. With zoning that supports a wide range of business types, this property presents a strong opportunity for users looking to establish or relocate into a versatile, move-in-ready space.

Kyle Church

c: 205.919.1528

e: kyle@lightpointcre.com



Your Legacy Awaits

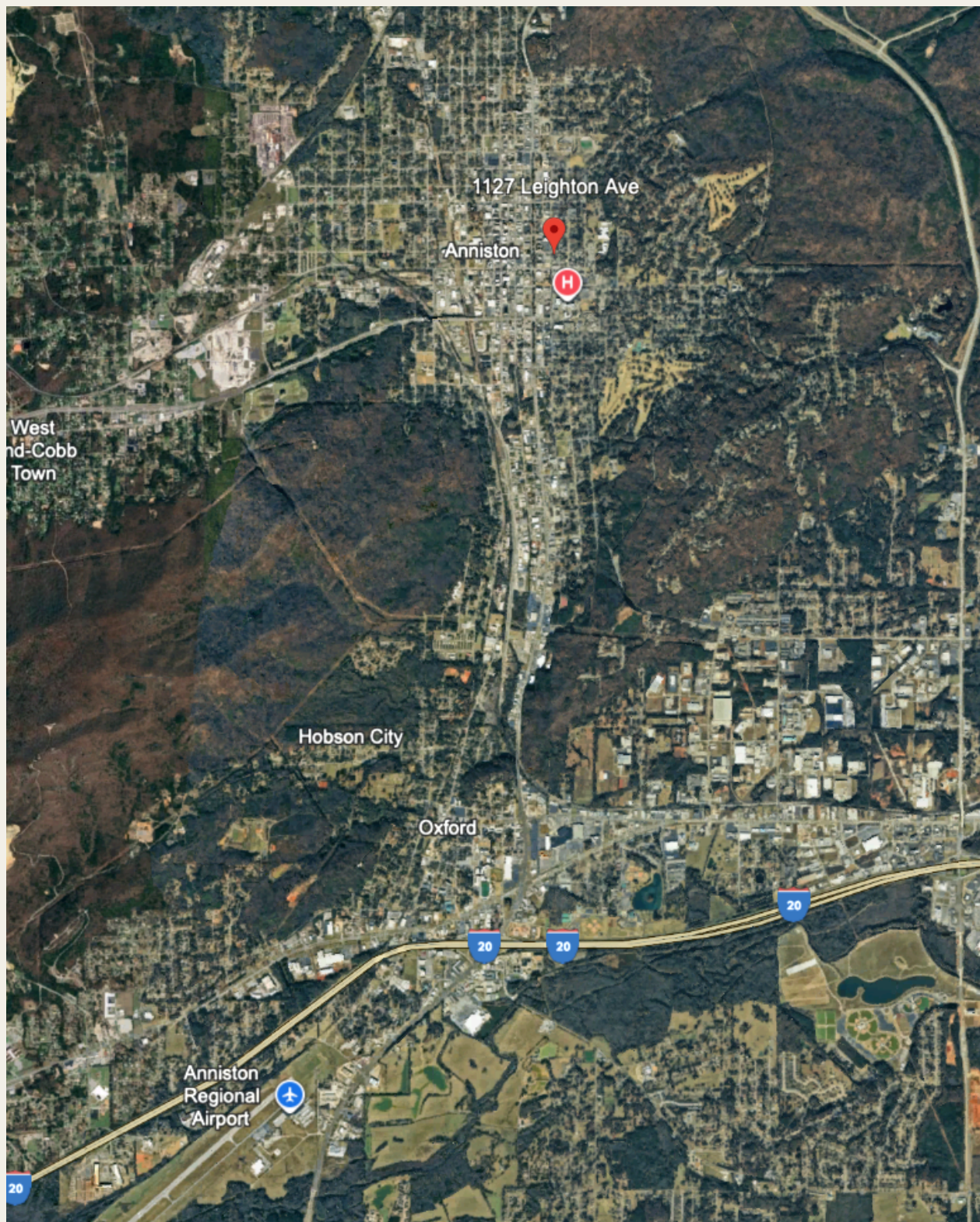
FOR SALE

1127 Leighton Ave
Anniston, AL 36207



Lightpoint

A Healthcare Real Estate Firm



Kyle Church

c: 205.919.1528

e: kyle@lightpointcre.com



Your Legacy Awaits