

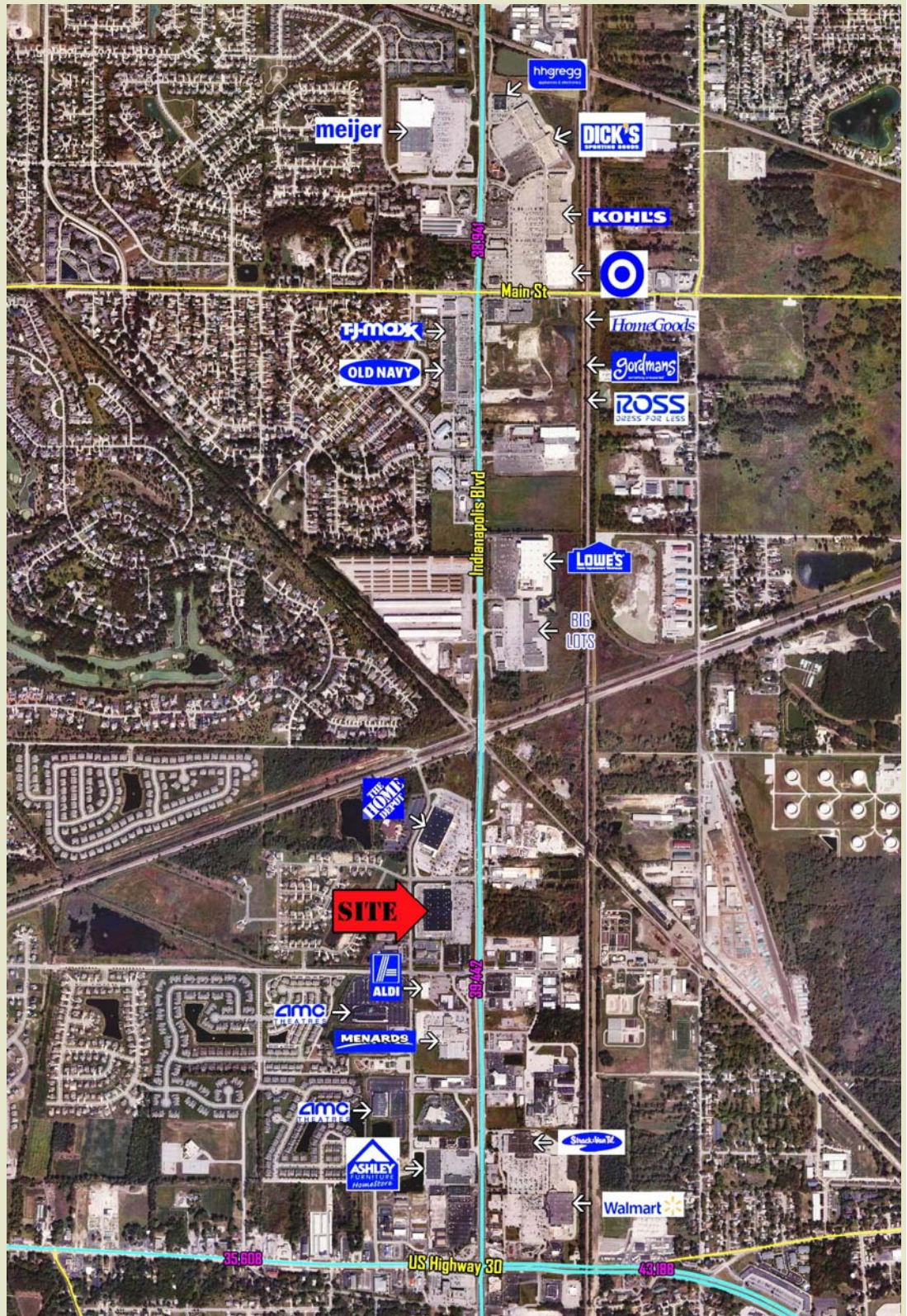
OAKRIDGE REALTY PRESENTS

160,680 SF DIVISIBLE ANCHOR RETAIL SPACE

SWC INDIANAPOLIS BLVD & WILLOW BROOK DR

SCHERERVILLE, IN

- ◆ 160K SF FORMER MENARD'S REDEVELOPMENT
- ◆ ANCHOR RETAIL SPACE FOR LEASE
- ◆ OUTLOT RETAIL SPACE FOR LEASE
- ◆ LOCATED IN THE HEART OF THE SCHERERVILLE TRADE AREA
- ◆ PRIME EXPOSURE TO RT 41/ INDIANAPOLIS BLVD
- ◆ EXPANSION SPACE COMING IN 2015
- ◆ +/- 40,000 CPD ON INDIANAPOLIS BLVD.
- ◆ ACCESS VIA TWO TRAFFIC SIGNALS



For More Info Contact:

MIKE PEIRCE

(630) 205-7384

(847) 305-2001

mpeirce@oakridgellc.com



**OAKRIDGE
REALTY LLC**

1900 E Golf Rd #950, Schaumburg IL
P:847-305-2001, F:847-305-5894

DEMOGRAPHICS

2015 EST. POPULATION
2015 EST. AVERAGE INC.
2015 EST. HOUSEHOLDS

3 MILE

57,442
\$74,175
23,088

5 MILES

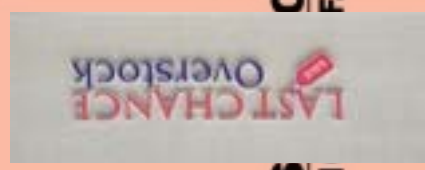
154,391
\$69,768
59,545

7 MILES

293,904
\$61,808
110,807



**LEASE
PENDING**

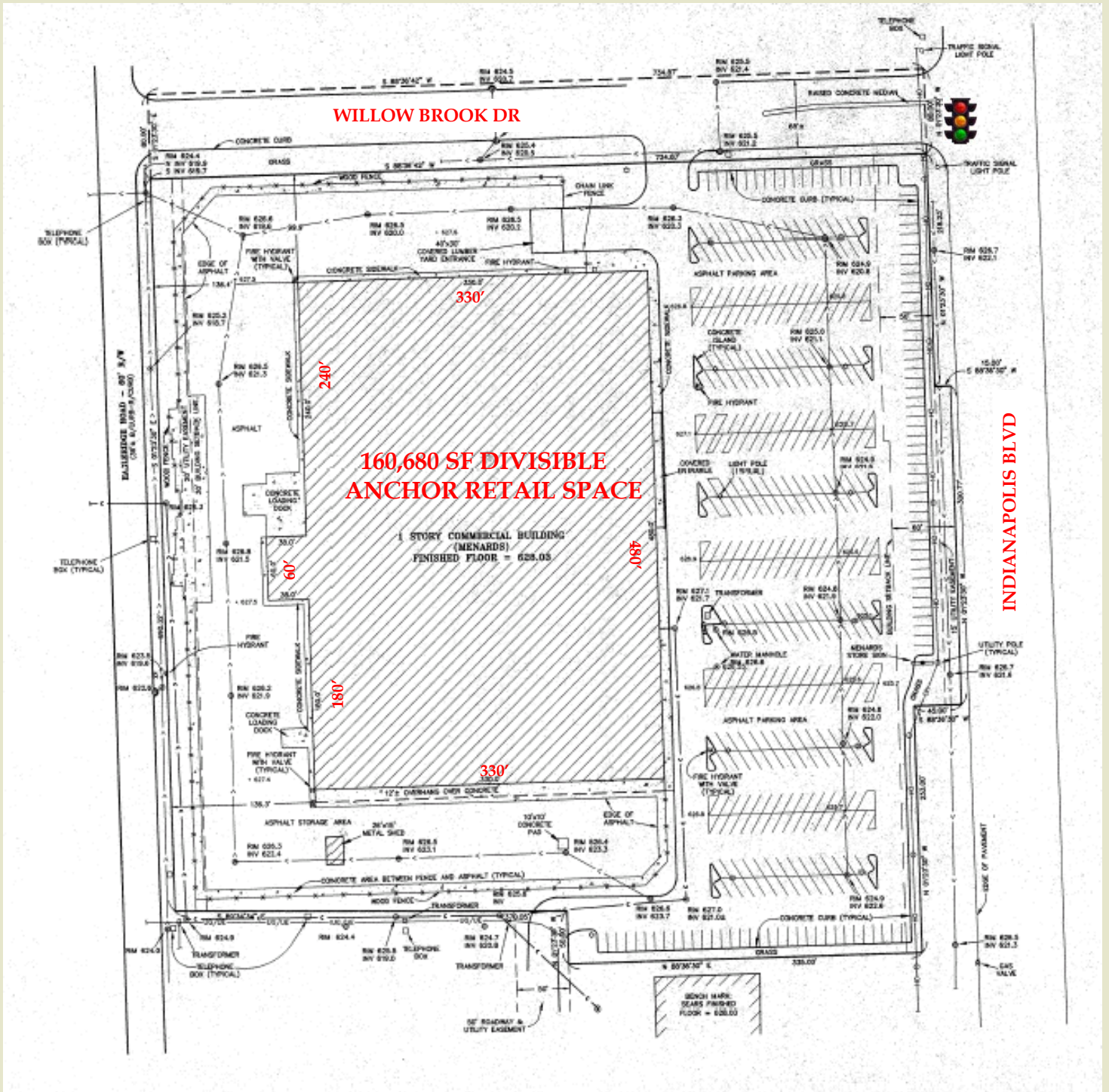


**AVAILABLE
UP TO
+/- 10,000 SF**

**AVAILABLE
SPACE-A&B**

UP TO 42,000 SF

130'



For More Info Contact:
MIKE PEIRCE
 (630) 205-7384
 (847) 305-2001
mpeirce@oakridgellc.com



**OAKRIDGE
 REALTY LLC**

1900 E Golf Rd #950, Schaumburg IL
 P:847-305-2001, F:847-305-5894



For More Info Contact:
MIKE PEIRCE
(630) 205-7384
(847) 305-2001
mpeirce@oakridgellc.com



**OAKRIDGE
REALTY LLC**

1900 E Golf Rd #950, Schaumburg IL
P:847-305-2001, F:847-305-5894