

PRIME

SMALL BAY INDUSTRIAL



635-695 N.W. 4th Avenue
FORT LAUDERDALE, FL 33311



635-695 N.W. 4TH AVENUE
FORT LAUDERDALE, FL 33301

BUILDING INFORMATION

TENANT COST

Base Rent (Triple Net)/NNN Available upon request
Est. 2024 CAM/ OPEX \$5.16 per sq.ft.

SITE DESCRIPTION

Year Built 1986
Building Zoned Industrial
Number of Buildings 1
Land Area 2.86 acres +/-

BUILDING SIZE (SF)

Total Space 57,297 SF +/-

OFFICE

Total Office Space Varies

TECHNICAL SPECIFICATION

Ceiling Height 24'
Maximum Door Height 12'

OTHER

3 phase 120/208 volt
Grade level and dock high loading
Parking ratio 2.10/1,000 SF
Ancillary fenced yard area

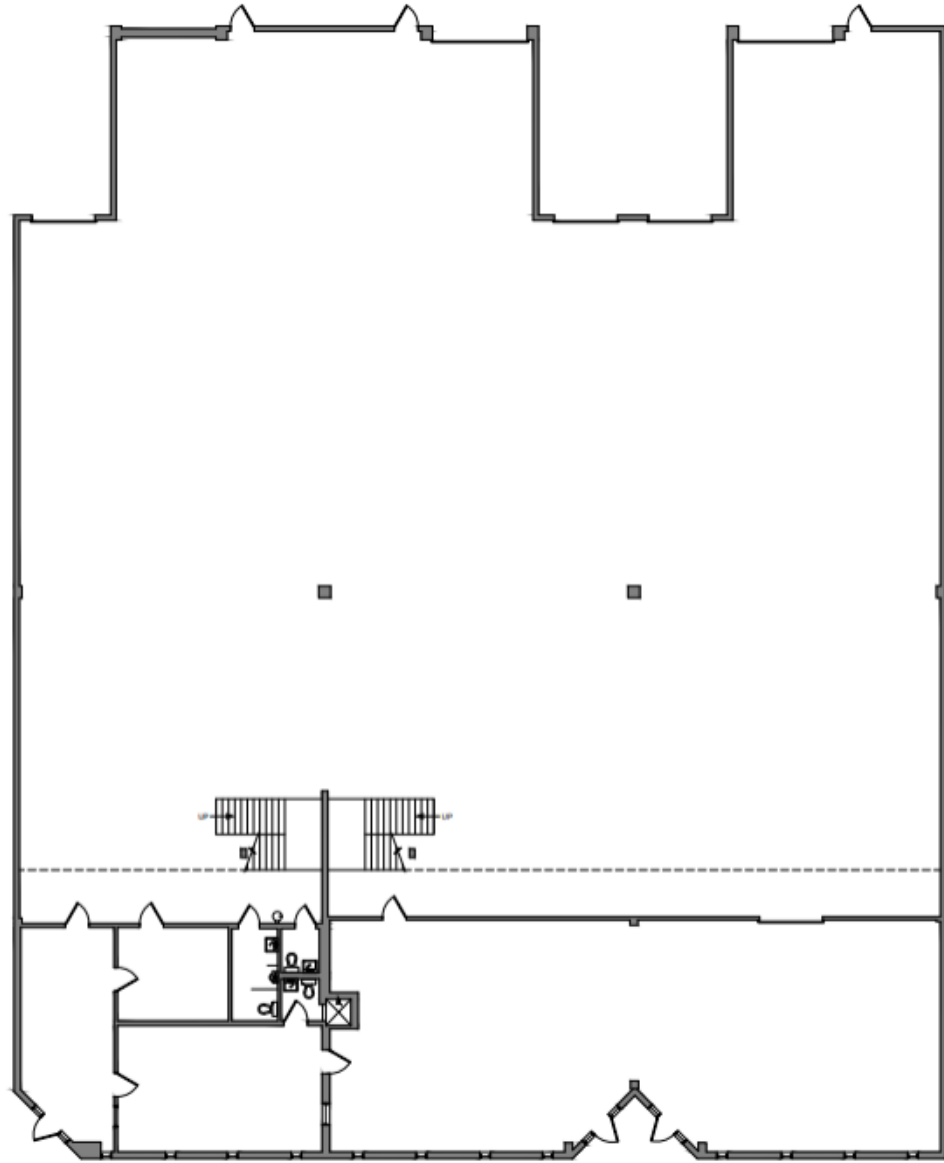
KEITH R. GRAVES, CCIM
954.652.2031
kgraves@bergercommercial.com

DANIEL FORMAN
954.652.2004
dforman@bergercommercial.com

LAWRENCE OXENBERG
954.652.2017
loxenberg@bergercommercial.com



550 S. ANDREWS AVE.
SUITE 400
FORT LAUDERDALE, FL 33301



BAY 645-655

SPECIFICATIONS

BUILDING AREA: SITE 57,297 SQ. FT. +/-
AREA: 2.86 ACRES +/-
CLEAR HEIGHT: 24 FEET
OFFICE: VARIOUS
ELECTRICAL CAPACITY: 3-PHASE- 120/208 VOLTS
COLUMN SPACING: 55' X 35'
LOADING: 8 GRADE LEVEL @ 10'-12'
 10 DOCK HIGH O/H
 DOORS

ZONING B-3 CITY OF FORT
BAY 645-655 20,934 +/- RSF
 INCLUDING MEZZANINE
 3,700 SF OFFICE

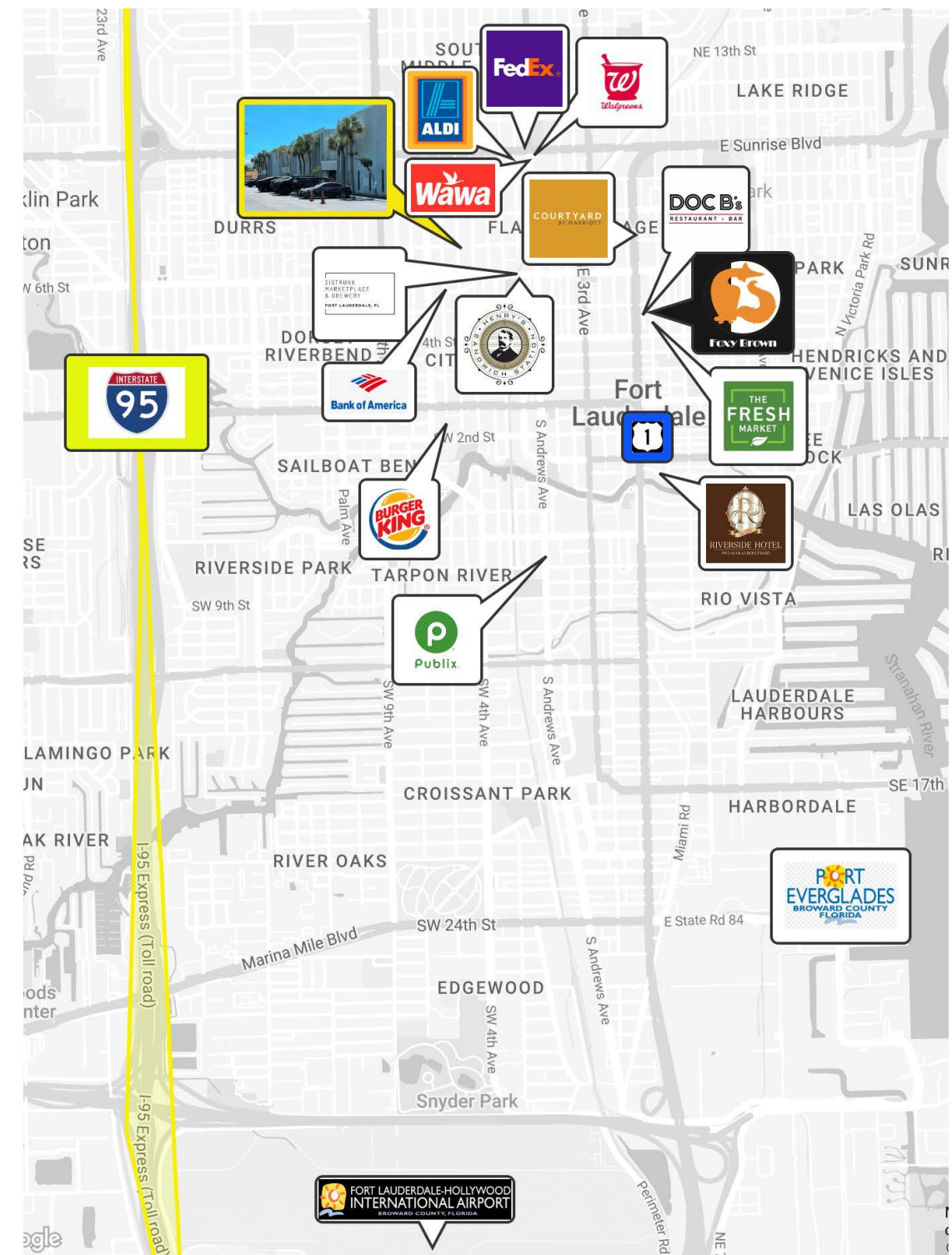
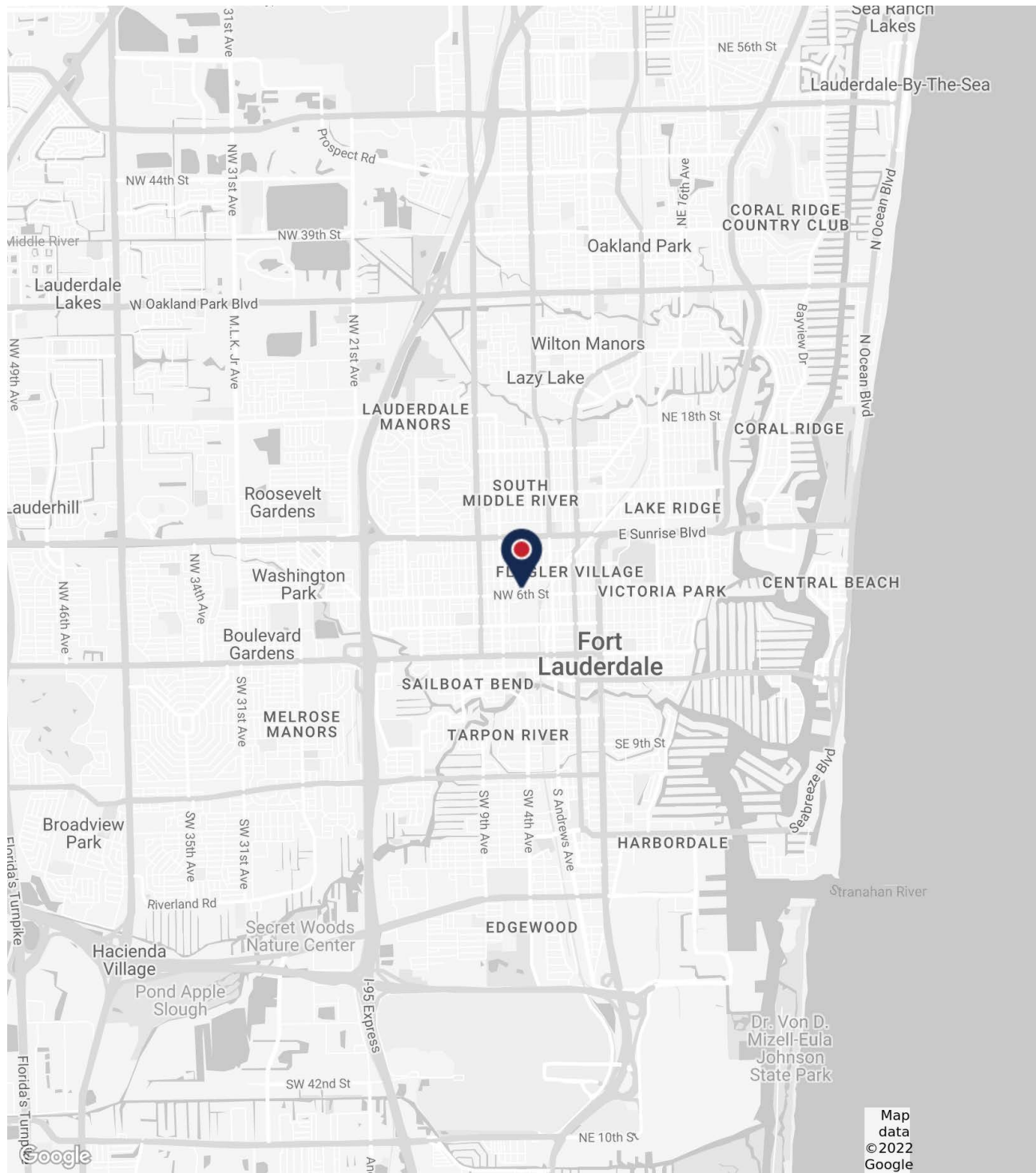
SPACE FEATURES 3 DOCK HIGH AND
 2 GRADE LEVEL DOORS

ACCESSIBILITY

STRATEGICALLY LOCATED JUST EAST OF I-95, OFF SUNRISE BLVD. WITH IMMEDIATE PROXIMITY TO DOWNTOWN/CBD - FTL, AFFLUENT HOUSING BASE AND FLAGLER VILLAGE.

MINUTES TO FORT LAUDERDALE- HOLLYWOOD INTERNATIONAL AIRPORT (FLL) AND BRIGHTLINE TRAIN STATION.





LOCATION

635-695 N.W. 4th Ave is strategically located near Downtown Fort Lauderdale (CBD) with proximity to I-95, hotels, retail, Port Everglades, and Fort Lauderdale- Hollywood International Airport (FLL).

NEARBY CONVENIENCES

±5 MIN

- STRUNK MARKETPLACE
- HENRY'S SANDWICH STATION
- FOXY BROWN
- DOC B'S
- WALGREENS
- FEDEX
- ALDI
- COURTYARD MARRIOTT
- THE FRESHMARKET
- PUBLIX
- BANK OF AMERICA
- BURGER KING
- WAWA



FOR MORE INFORMATION PLEASE CONTACT

KEITH R. GRAVES, CCIM, SIOR
954.652.2031
kgraves@bergercommercial.com

DANIEL FORMAN
954.652.2004
dforman@bergercommercial.com

LAWRENCE OXENBERG
954.652.2017
loxenberg@bergercommercial.com

BERGER COMMERCIAL REALTY
550 S. ANDREWS AVE., SUITE 400
FORT LAUDERDALE, FL 33301



COMMERCIAL BROKERAGE AND PROPERTY MANAGEMENT



Information furnished regarding this property is from sources deemed reliable, but no warranty or representation as to the accuracy thereof and it is submitted subject to errors, omissions, prior sale, lease or withdrawal without prior notice. All other marks displayed on this document are the property of their respective owners. Photos herein are the property of their respective owners. Use of these images without the express written consent of the owner is prohibited.