

18,851 SF Freestanding
Industrial Facility

FOR SALE

31330 Wheel Avenue, Abbotsford, BC



[Watch Video](#)

RYAN CAULFIELD CPA, CGA *Principal | Vice President*

Personal Real Estate Corporation

604.340.1101 | rcaulfield@cdnglobal.com

REID ADDISON *Associate Advisor*

604.697.3058 | raddison@cdnglobal.com

MICHAEL ANDREWS *Associate Advisor*

605.697.3059 | mandrews@cdnglobal.com

www.cdnglobal.com

CDNGLOBAL[®]
Commercial Real Estate Advisors

THE OPPORTUNITY

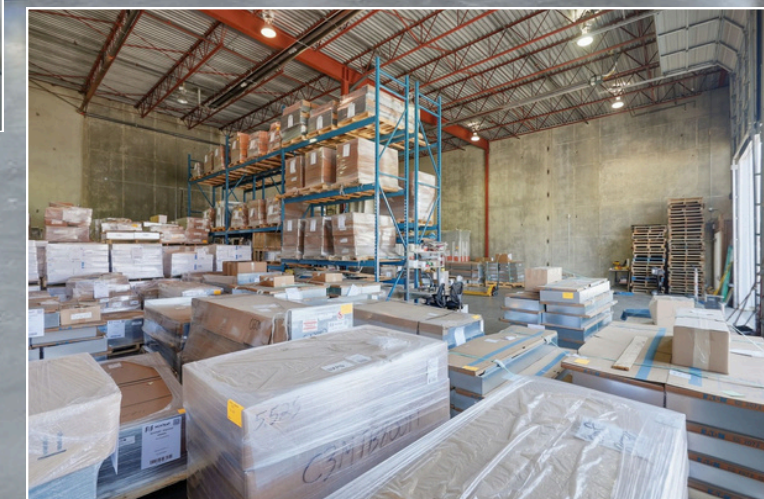
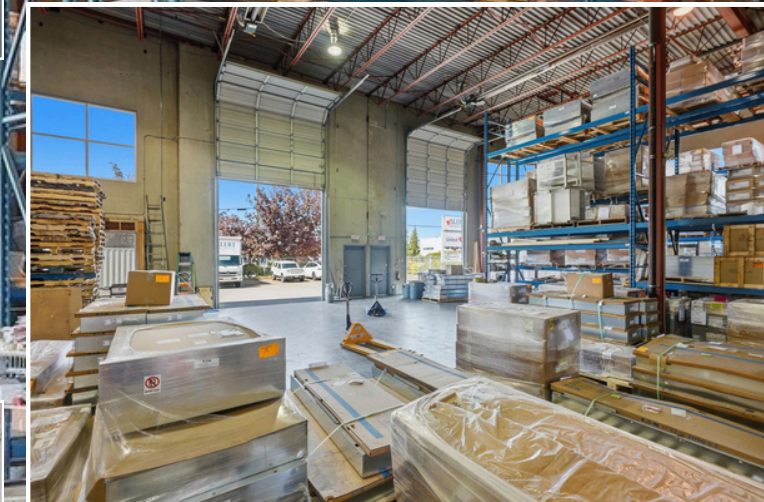
CDNGLOBAL presents a rare opportunity to acquire a freestanding industrial facility in West Abbotsford's established industrial area. 31330 Wheel Avenue features a 18,851 SF building situated on a 0.807-acre site, offering a functional warehouse layout with 25' clear ceiling heights, seven grade loading doors, and a fenced and secured yard area.

Unique features include recent office improvements completed in 2024, extensive warehouse glazing providing natural light throughout the warehouse area, and supplemental income through an assumable self-storage business.



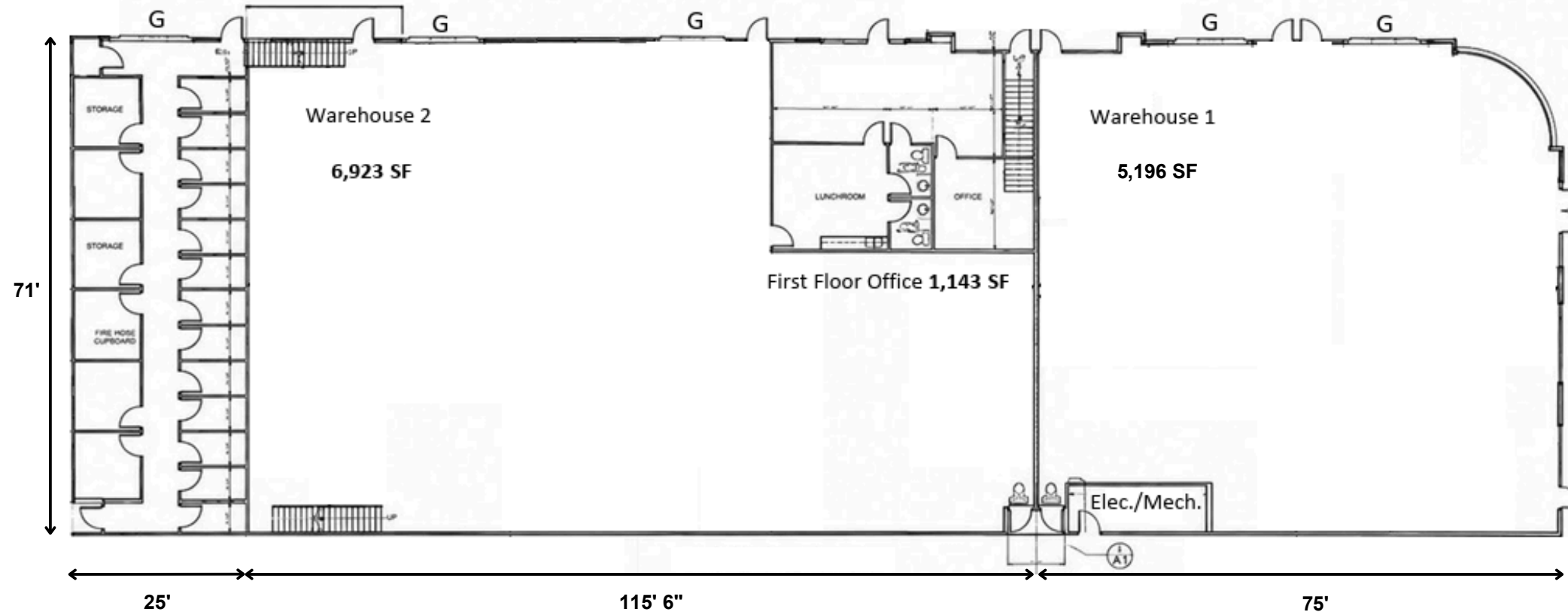
PROPERTY DETAILS

Building Size	18,851 SF
Lot Size	35,155 SF (0.807 acres)
Built	1998
Annual Property Taxes	\$70,874 (2026)
Construction	Concrete tilt-up
Ceiling Height	25' Clear
Loading Doors	5 grade (space for two additional)
Parking	25 Parking stalls plus ample street parking
Power	400A / 120/208V / 3-phase
Fire Suppression	Fully sprinklered w/ fire hose in warehouse
Additional Offerings	<ul style="list-style-type: none">• Extensive glazing throughout warehouse• Fenced and secured parking/yard area• Office renovation in 2024• Easily demisable into separate units
Zoning	I2 - General Industrial Zone supporting a mix of light industrial uses, such as warehousing, manufacturing, auto repair, brewery, building supplies, and other uses listed within the zoning bylaw.
Asking Price	Contact listing agents



FLOOR PLANS

Ground floor plan



Area	Size (SF)
Warehouse 1	5,196
Warehouse 2	6,923
1st Floor Office	1,143
2nd Floor Office	1,176
Mezzanine	2,638
Self-storage	1,775
Total	18,851

Upper floor plan



Disclaimer: Total floor plan area is approximately 18,851 sq. ft. All floor plans, measurements, and item locations are approximate and for illustrative purposes only. No liability is assumed for errors or omissions. Interested parties must independently verify all specifications and structural details.

LOCATION

Located in the West Abbotsford industrial area, 31330 Wheel Avenue is situated in a well-established industrial node offering excellent connectivity to Highway 1 via the Clearbrook Road and Mt. Lehman Road interchanges.

This strategic location provides efficient access throughout the Fraser Valley, Metro Vancouver, and the U.S. border crossings at Abbotsford-Huntingdon / Sumas.

Businesses are drawn to this area for its strong regional labour pool, competitive industrial zoning, close proximity to Abbotsford International Airport (YXX), major transportation corridors, and cross-border trade routes.

Drive times:



Highway 1 (Mt. Lehman Interchange)	5 minutes
US Border Crossing (Sumas)	20 minutes
Langley City Centre	25 minutes
Surrey City Centre	40 minutes
Vancouver International Airport (YVR)	60 minutes
Abbotsford International Airport (YXX)	10 minutes



CONTACT



This communication is intended for general information only and not to be relied upon in any way. Consequently, no responsibility or liability whatsoever can be accepted by CDNGLOBAL for any loss or damage resulting from any use of, reliance on or reference to the contents of this document, including hypertext links to external sources. In addition, as a general communication, this material does not necessarily represent the view of CDNGLOBAL in relation to particular properties or projects. This communication is not intended to cause or induce breach of any agency agreement. Reproduction or Distribution of this communication in whole or in part is not allowed without prior written approval of CDNGLOBAL.

RYAN CAULFIELD CPA, CGA *Principal | Vice President*
Personal Real Estate Corporation
604.340.1101 | rcaulfield@cdnglobal.com

REID ADDISON *Associate Advisor*
604.697.3058 | raddison@cdnglobal.com

MICHAEL ANDREWS *Associate Advisor*
605.697.3059 | mandrews@cdnglobal.com