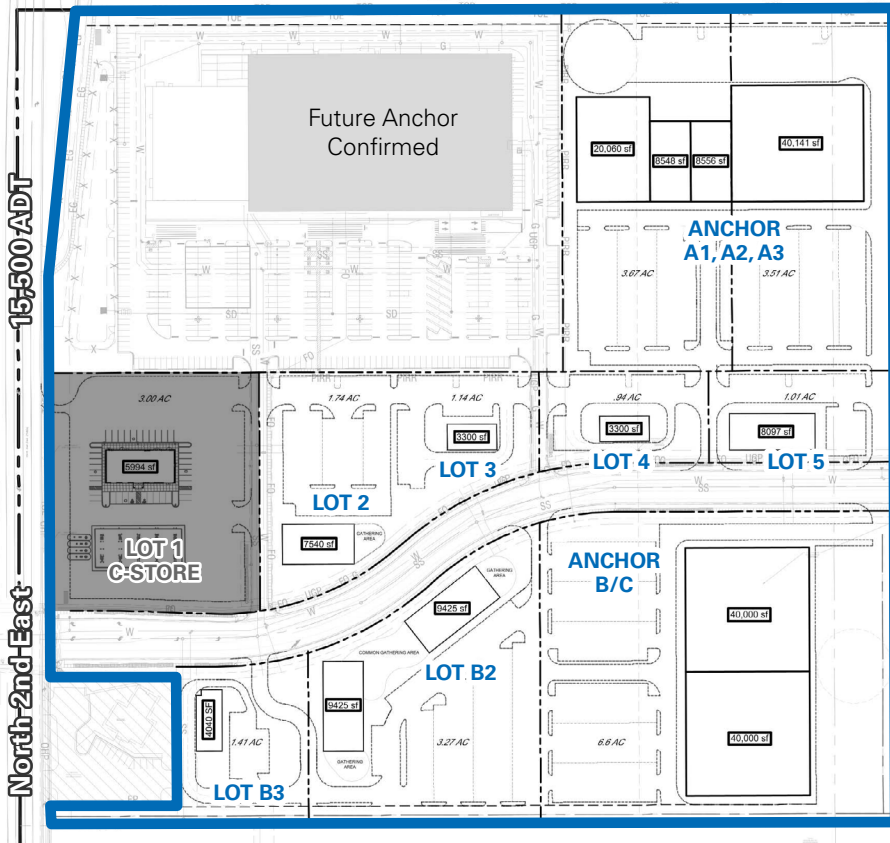


REXBURG RETAIL DEVELOPMENT

FOR LEASE, BTS, GL



PROPERTY DETAILS

Rexburg, Idaho

- Retail Pads, Shop Space and Mid-Box Available
- High Traffic Counts
 - » 2nd East: 18,000 ADT
 - » I-20: 21,500 ADT
- Immediate access to I-20 Hwy
- Call for Pricing and Details

2025 DEMOS



EST. POPULATION

1 MILE » 411
3 MILE » 26,139
5 MILE » 50,352



EST. HOUSEHOLDS

1 MILE » 125
3 MILE » 6,063
5 MILE » 11,813



EST. AVERAGE HH INCOME

1 MILE » \$105,804
3 MILE » \$104,815
5 MILE » \$95,041



CHAD MOORE
cmoore@newmarkmw.com
direct 801.456.8801
[View Profile](#)

SHAYDON WOOD
swood@newmarkmw.com
direct 801.456.8810
[View Profile](#)

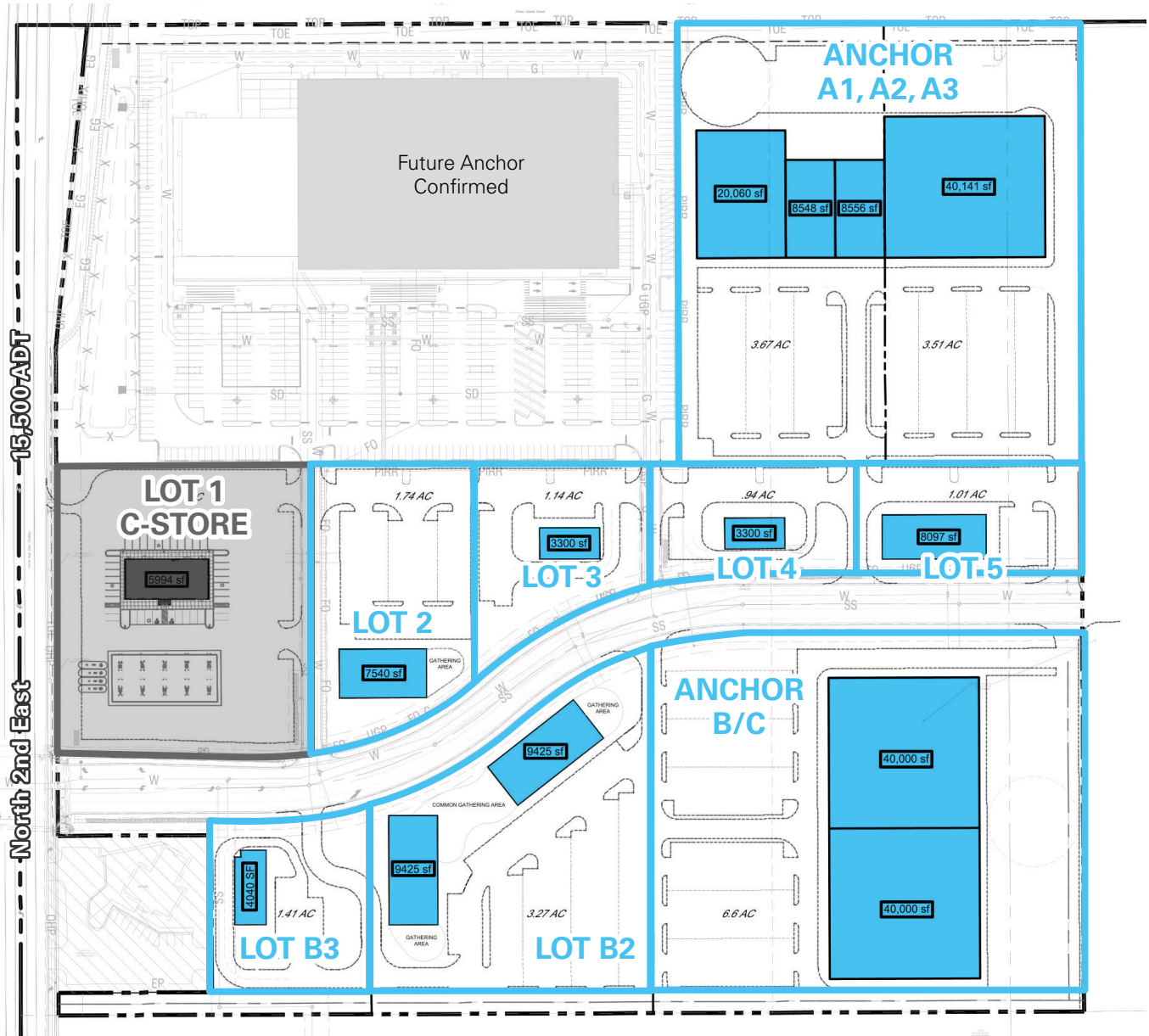
**FULL SERVICE
COMMERCIAL REAL ESTATE**
312 East South Temple
Salt Lake City, Utah 84111
Office 801.456.8800
www.newmarkmw.com

SITE PLAN



LOT	TENANT	SF
Anchor A1, A2, A3	AVAILABLE	8,000 - 77,305
1	at Lease	5,994
2	AVAILABLE	1,200 - 7,540
3	AVAILABLE	1,200 - 3,300
4	AVAILABLE	1,200 - 3,300
5	AVAILABLE	1,200 - 8,097
Anchor B/C	AVAILABLE	40,000 - 80,000
B2	AVAILABLE	1,200 - 18,850
B3	AVAILABLE	1,200 - 4,040

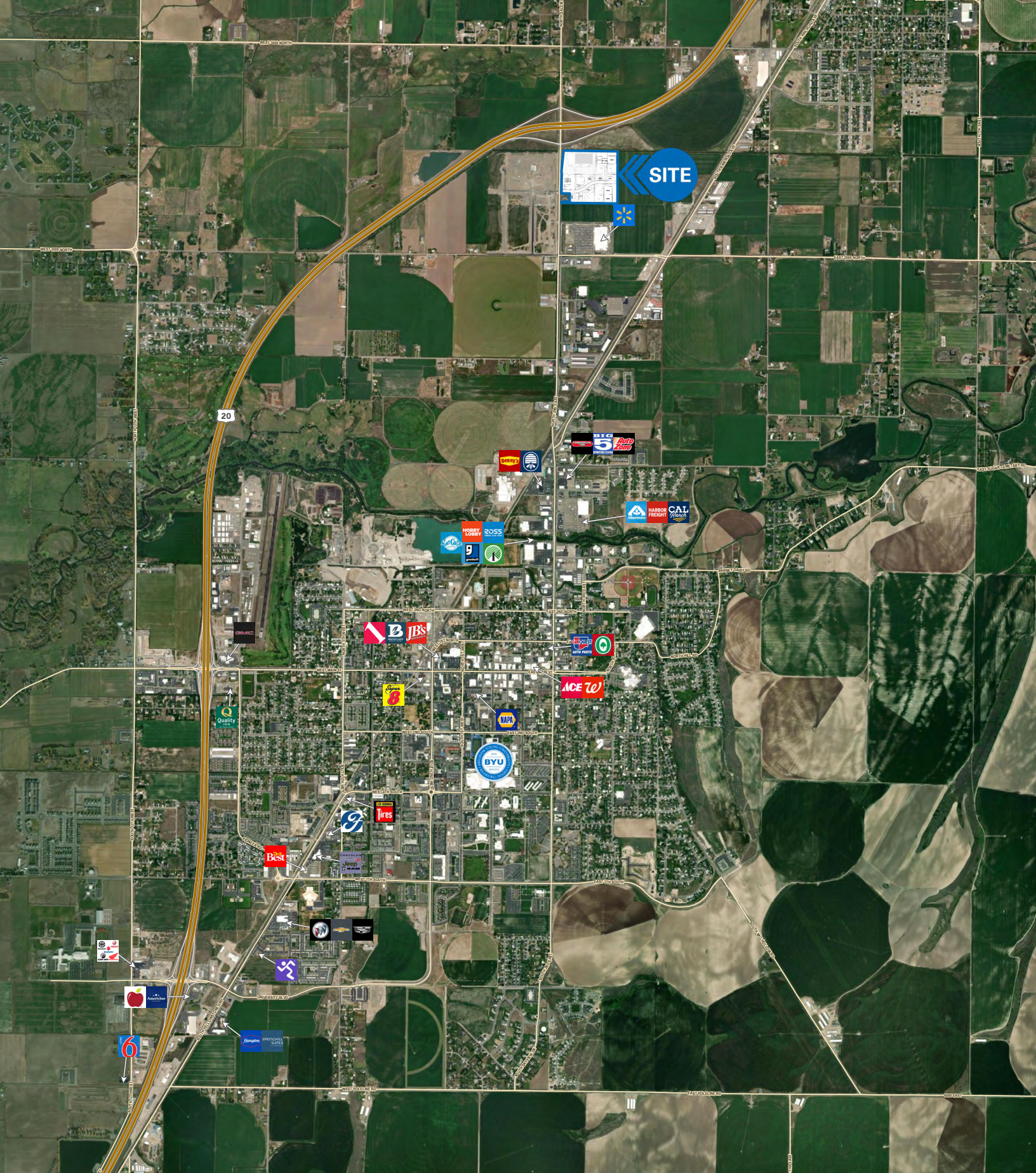
- AVAILABLE
- LOI
- LEASED



CHAD MOORE
 cmoore@newmarkmw.com
 direct 801.456.8801
[View Profile](#)

SHAYDON WOOD
 swood@newmarkmw.com
 direct 801.456.8810
[View Profile](#)

**FULL SERVICE
 COMMERCIAL REAL ESTATE**
 312 East South Temple
 Salt Lake City, Utah 84111
 Office 801.456.8800
www.newmarkmw.com



CHAD MOORE
 cmoore@newmarkmw.com
 direct 801.456.8801
[View Profile](#)

SHAYDON WOOD
 swood@newmarkmw.com
 direct 801.456.8810
[View Profile](#)

**FULL SERVICE
 COMMERCIAL REAL ESTATE**
 312 East South Temple
 Salt Lake City, Utah 84111
 Office 801.456.8800
www.newmarkmw.com