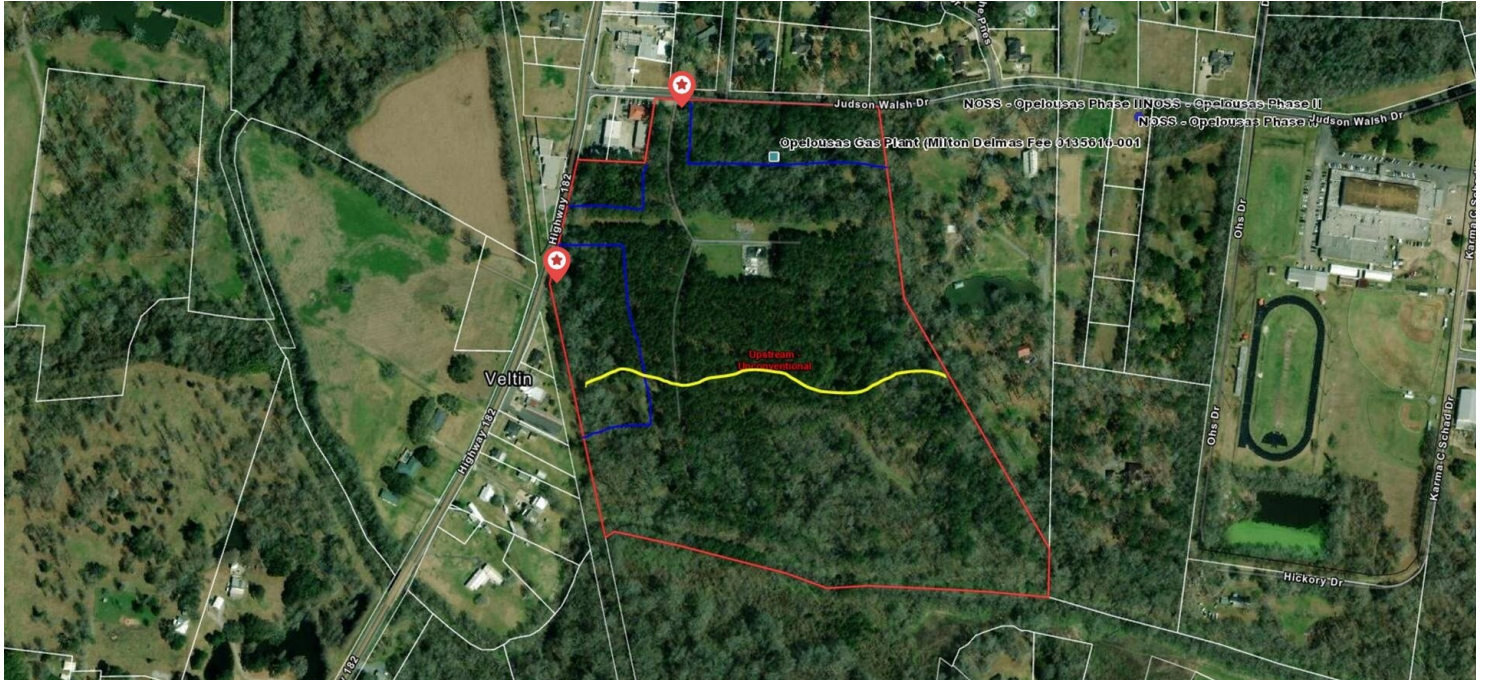


# LAND FOR SALE OPELOUSAS ACREAGE JUDSON WALSH DRIVE

Judson Walsh Drive, Opelousas, LA 70570



## PROPERTY HIGHLIGHTS

- 50.461 Acres located on the south side of Opelousas on Hwy. 182.
- Tract has dual frontage on Hwy. 182 and Judson Walsh Drive.
- Excellent I-49 access
- Near Opelousas High School

## OFFERING SUMMARY

Sale Price:	\$350,000
Lot Size:	50.461 AC
Price Per Acre:	\$6,936.05/AC



Evan Scroggs, SIOR, CCIM  
escroggs@lee-associates.com  
D 225.427.9240

Elliott Scroggs  
elliott.scroggs@lee-associates.com  
D 225.427.9200

All information furnished regarding property for sale, rental or financing is from sources deemed reliable, but no warranty or representation is made to the accuracy thereof and same is submitted to errors, omissions, change of price, rental or other conditions prior to sale, lease or financing or withdrawal without notice. No liability of any kind is to be imposed on the broker herein.

# LAND FOR SALE OPELOUSAS ACREAGE JUDSON WALSH DRIVE

Judson Walsh Drive, Opelousas, LA 70570



## OFFERING SUMMARY

Sale Price:	\$350,000
Lot Size:	50.461 Acres
Price / Acre:	\$6,936
Market:	Lafayette - MSA
Submarket:	Opelousas

## PROPERTY OVERVIEW

50.461 Acres for Sale

## LOCATION OVERVIEW

Judson Walsh Drive

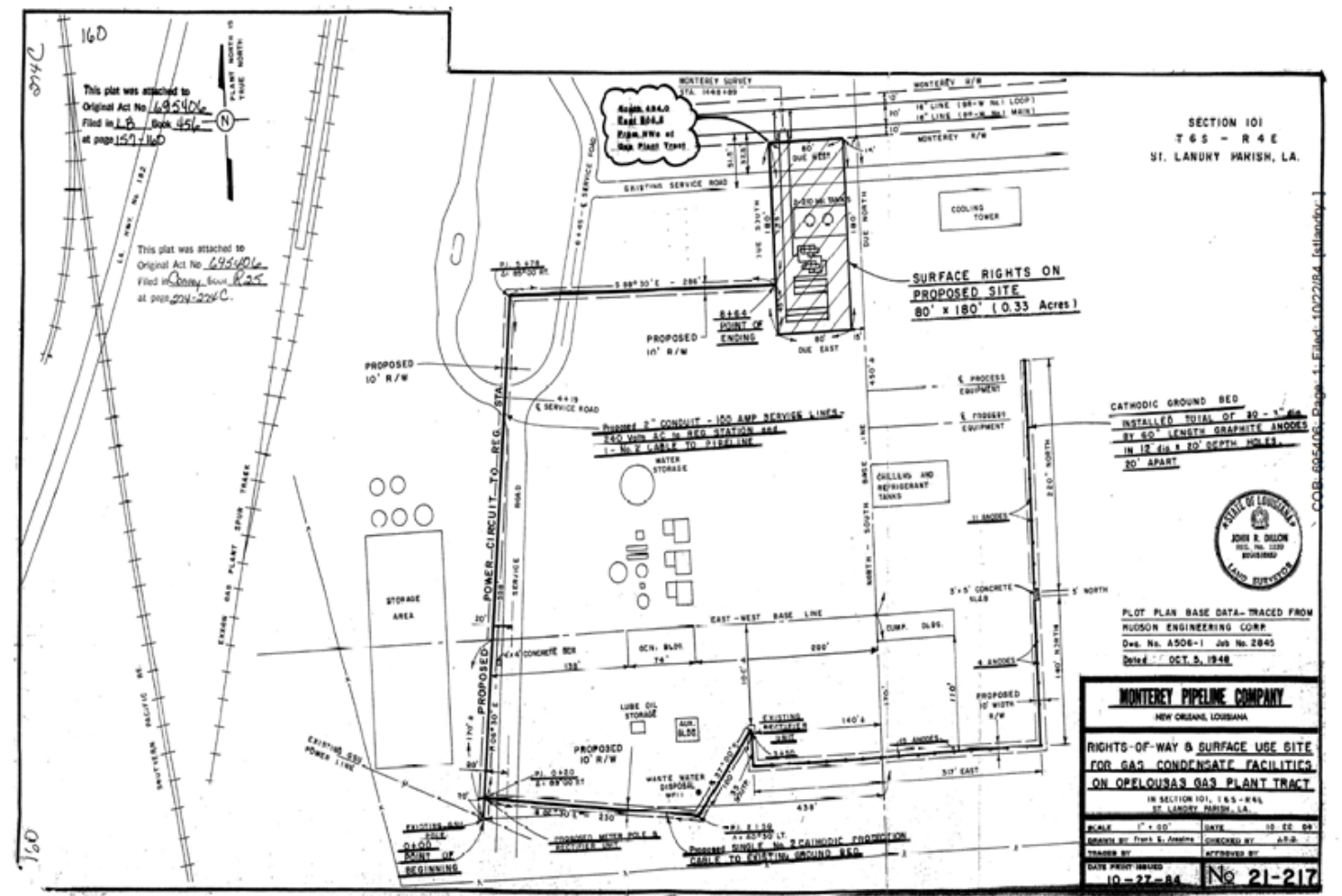
Evan Scroggs, SIOR, CCIM  
escroggs@lee-associates.com  
D 225.427.9240

Elliott Scroggs  
elliott.scroggs@lee-associates.com  
D 225.427.9200

All information furnished regarding property for sale, rental or financing is from sources deemed reliable, but no warranty or representation is made to the accuracy thereof and same is submitted to errors, omissions, change of price, rental or other conditions prior to sale, lease or financing or withdrawal without notice. No liability of any kind is to be imposed on the broker herein.

# LAND FOR SALE OPELOUSAS ACREAGE JUDSON WALSH DRIVE

Judson Walsh Drive, Opelousas, LA 70570



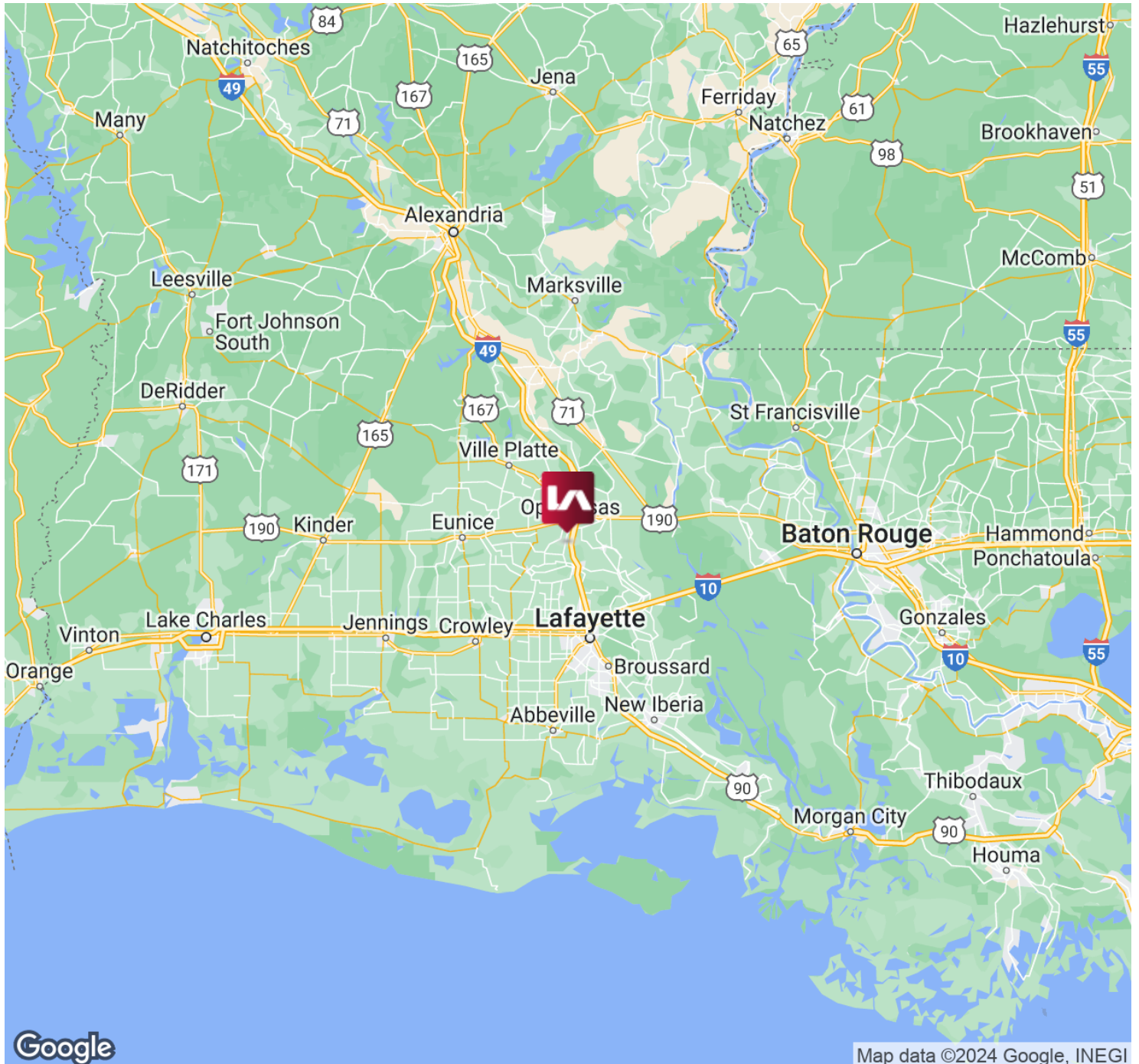
Evan Scroggs, SIOR, CCIM  
escroggs@lee-associates.com  
D 225.427.9240

Elliott Scroggs  
elliott.scroggs@lee-associates.com  
D 225.427.9200

All information furnished regarding property for sale, rental or financing is from sources deemed reliable, but no warranty or representation is made to the accuracy thereof and same is submitted to errors, omissions, change of price, rental or other conditions prior to sale, lease or financing or withdrawal without notice. No liability of any kind is to be imposed on the broker herein.

# LAND FOR SALE OPELOUSAS ACREAGE JUDSON WALSH DRIVE

Judson Walsh Drive, Opelousas, LA 70570



Evan Scroggs, SIOR, CCIM  
escroggs@lee-associates.com  
D 225.427.9240

Elliott Scroggs  
elliott.scroggs@lee-associates.com  
D 225.427.9200

All information furnished regarding property for sale, rental or financing is from sources deemed reliable, but no warranty or representation is made to the accuracy thereof and same is submitted to errors, omissions, change of price, rental or other conditions prior to sale, lease or financing or withdrawal without notice. No liability of any kind is to be imposed on the broker herein.

# LAND FOR SALE OPELOUSAS ACREAGE JUDSON WALSH DRIVE

Judson Walsh Drive, Opelousas, LA 70570



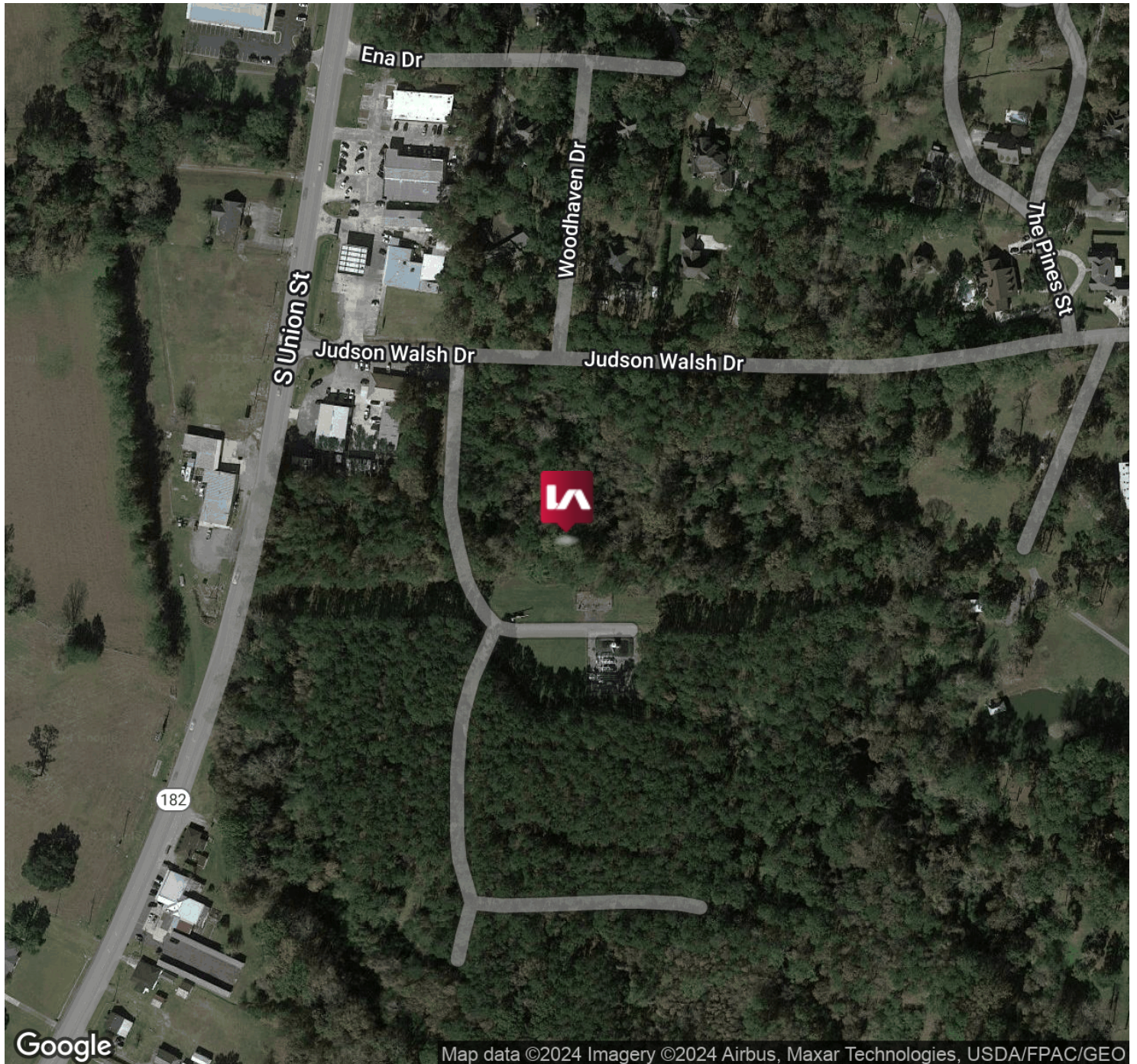
Evan Scroggs, SIOR, CCIM  
escroggs@lee-associates.com  
D 225.427.9240

Elliott Scroggs  
elliott.scroggs@lee-associates.com  
D 225.427.9200

All information furnished regarding property for sale, rental or financing is from sources deemed reliable, but no warranty or representation is made to the accuracy thereof and same is submitted to errors, omissions, change of price, rental or other conditions prior to sale, lease or financing or withdrawal without notice. No liability of any kind is to be imposed on the broker herein.

**LAND FOR SALE**  
**OPELOUSAS ACREAGE JUDSON WALSH DRIVE**

Judson Walsh Drive, Opelousas, LA 70570



Evan Scroggs, SIOR, CCIM  
escroggs@lee-associates.com  
D 225.427.9240

Elliott Scroggs  
elliott.scroggs@lee-associates.com  
D 225.427.9200

All information furnished regarding property for sale, rental or financing is from sources deemed reliable, but no warranty or representation is made to the accuracy thereof and same is submitted to errors, omissions, change of price, rental or other conditions prior to sale, lease or financing or withdrawal without notice. No liability of any kind is to be imposed on the broker herein.