



Situated on the 18th hole of the prestigious Palm Aire Country Club and fronting Powerline Road, The Offices at Palm Aire is a premium office building offering professional space for lease. Located just south of Atlantic Boulevard in Pompano Beach, it features sweeping golf course views from each floor and is accessible from both Florida’s Turnpike and I-95.

CENTER PROFILE		MARKET DEMOGRAPHICS	
Total Square Feet	8,594	1 Mile	
Number of Levels	2	Population	11,945
Number of Parking Spaces	29	Number of Households	5,877
		Average Household Income	\$63,260
		3 Mile	
		Population	118,124
		Number of Households	49,294
		Average Household Income	\$75,440
		5 Mile	
		Population	383,681
		Number of Households	160,500
		Average Household Income	\$77,649



OFFICES AT PALM AIRE
555 South Powerline Road
Pompano Beach, FL 33069



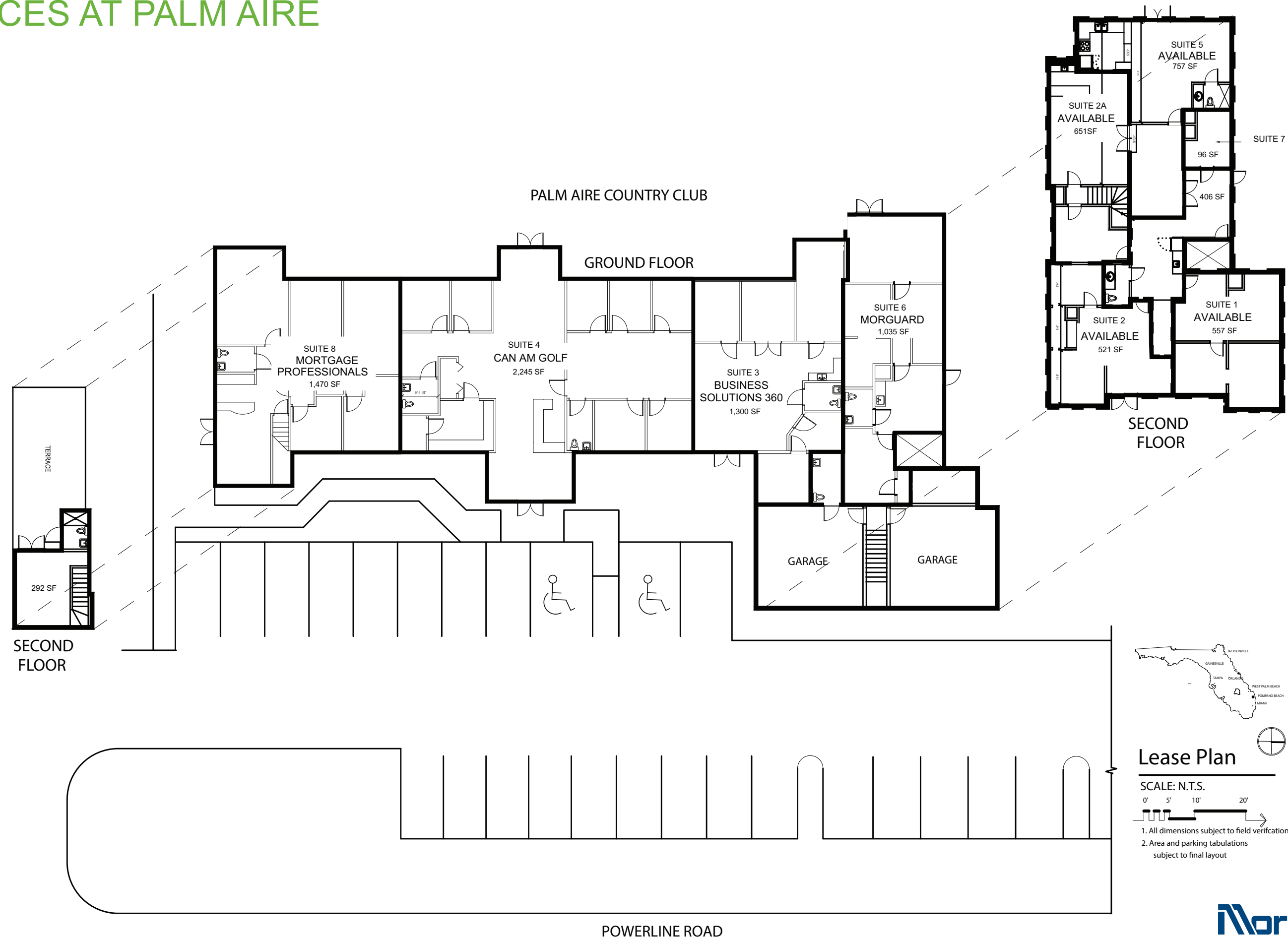
Business Solutions 360	3
Can Am Golf	4
Mortgage Professionals	8
Morguard	6



LEASING INQUIRIES
Morguard Management Company Inc.
551 S. Powerline Road, Pompano Beach, FL 33069
Phone 352-575-8657
Amanda Punch-Gill Apunchgill@morguard.com
morguard.com



OFFICES AT PALM AIRE



Lease Plan

SCALE: N.T.S.

0' 5' 10' 20'

1. All dimensions subject to field verification
2. Area and parking tabulations subject to final layout

