

INDUSTRIAL SPACE FOR LEASE

WILBERT'S

2996 W HENRIETTA RD, ROCHESTER, NY 14623

BUILDING ONE



▲ BUILDING ONE FEATURES

- 1,875 SQ. FT.
- COMPLETELY REMODELED & UPDATED
- GREAT FOR OFFICES OR CUSTOMER FACING

▼ BUILDING TWO FEATURES

- 13,200 SQ. FT.
- BUILT IN 1980, ADDITION IN 2010
- 5 DRIVE-IN BAYS
- CLEAR HEIGHT OF 23 FT.
- 2.5 ADDITIONAL ACRES FOR USE



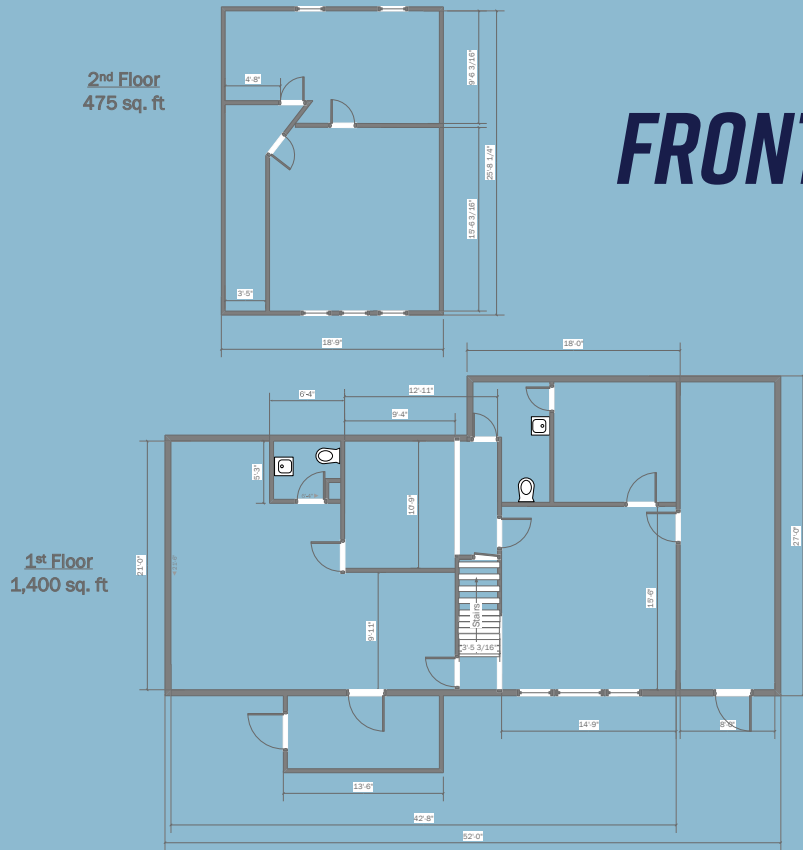
BUILDING TWO

CONTACT JOSH KUHN

LEASE@WILBERTS.COM

(585) 424-1087

FRONT HOUSE



WAREHOUSE

