



LOCATION MAP
NOT TO SCALE

LEGEND

- A = ARC LENGTH
A/C = AIR CONDITIONING UNIT
B/L = BUILDING SETBACK LINE
C&G = CURB & GUTTER
C/L = CENTERLINE
CALC = CALCULATED POINT
CHB = CHORD BEARING
CHH = COMMUNICATIONS HANDHOLE
CHL = CHORD LENGTH
CMP = CORRUGATED METAL PIPE
CPED = COMMUNICATIONS PEDESTAL
D = DELTA ANGLE
DB = DEED BOOK
DMH = DRAINAGE MANHOLE
EHH = ELECTRIC HANDHOLE
FES = FLARED END SECTION
FH = FIRE HYDRANT
GEN = GENERATOR
GM = GAS METER
GMP = GAS MARKER POST
HW = HEADWALL
IPF = IRON PIN FOUND
IPP = IRON PIN PLACED
L.L.L. = APPARENT LAND LOT LINE
LL = LAND LOT
LP = LIGHT POLE
LT BOL = LIGHT BOLLARD
N/F = NOW OR FORMERLY
OCS = OUTLET CONTROL STRUCTURE
OHW = OVERHEAD WIRE
OTP = OPEN TOP PIPE
P/C = PROPERTY CORNER
P/L = PROPERTY LINE
PB = PLAT BOOK
PG = PAGE
POB = POINT OF BEGINNING
POC = POINT OF COMMENCEMENT
PP = POWER POLE
R = RADIUS
R/W = RIGHT OF WAY
RB = REBAR
SMH = SANITARY SEWER MANHOLE
SQFT = SQUARE FEET
TRAN = ELECTRIC TRANSFORMER
WV = WATER VALVE

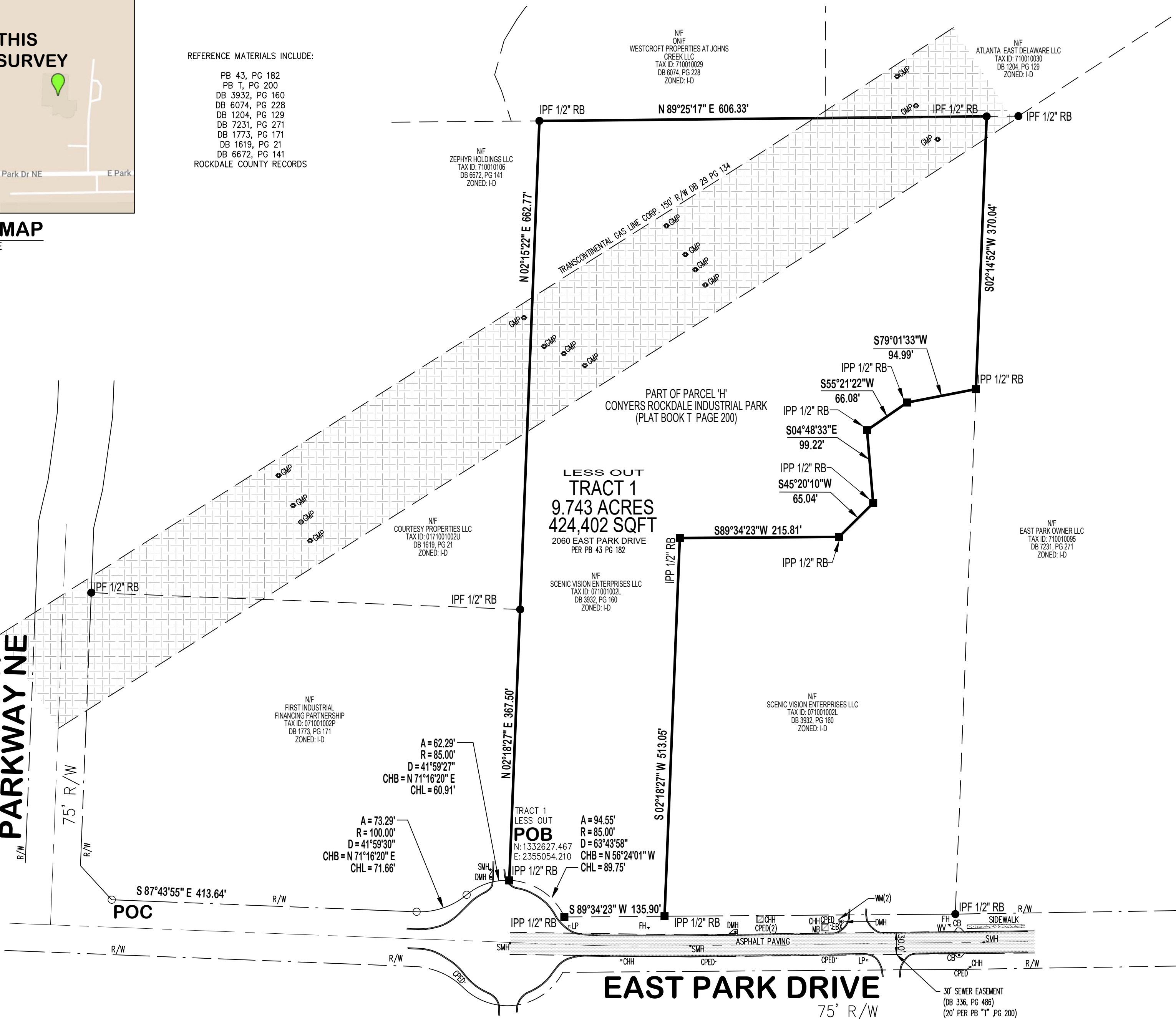
SYMBOL LEGEND

- CONCRETE
ASPHALT PAVEMENT
BUILDING OUTLINE
IRON PIN FOUND
IRON PIN PLACED (1/2" REBAR)
BOUNDARY POINT
IPF CONCRETE MONUMENT
OVERHEAD WIRE
POWER POLE
LIGHT POLE
ELECTRIC TRANSFORMER
ELECTRIC HANDHOLE
DRAINAGE MANHOLE
SEWER MANHOLE
GAS MARKER POST

REFERENCE MATERIALS INCLUDE:

- PB 43, PG 182
PB T, PG 200
DB 3932, PG 160
DB 6074, PG 228
DB 1204, PG 129
DB 7231, PG 271
DB 1773, PG 171
DB 1619, PG 21
DB 6672, PG 141
ROCKDALE COUNTY RECORDS

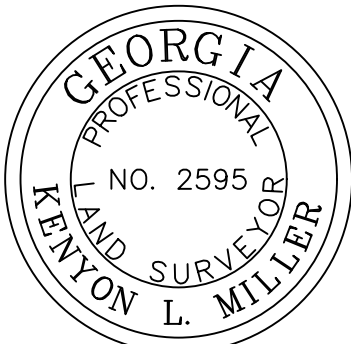
EAST VIEW
PARKWAY NE



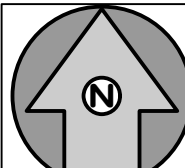
THIS PLAT IS A RETRACEMENT OF AN EXISTING PARCEL OR PARCELS OF LAND AND DOES NOT SUBDIVIDE OR CREATE A NEW PARCEL OR MAKE ANY CHANGES TO ANY REAL PROPERTY BOUNDARIES. THE RECORDING INFORMATION OF THE DOCUMENTS, MAPS, PLATS, OR OTHER INSTRUMENTS WHICH CREATED THE PARCEL OR PARCELS ARE STATED HEREON. RECORDATION OF THIS PLAT DOES NOT IMPLY APPROVAL OF ANY LOCAL JURISDICTION, AVAILABILITY OF PERMITS, COMPLIANCE WITH LOCAL REGULATIONS OR REQUIREMENTS, OR SUITABILITY FOR ANY USE OR PURPOSE OF THE LAND. FURTHERMORE, THE UNDERSIGNED LAND SURVEYOR CERTIFIES THAT THIS PLAT COMPLIES WITH THE MINIMUM TECHNICAL STANDARDS FOR PROPERTY SURVEYS IN GEORGIA AS SET FORTH IN THE RULES AND REGULATIONS OF THE GEORGIA BOARD OF REGISTRATION FOR PROFESSIONAL ENGINEERS AND LAND SURVEYORS AND AS SET FORTH IN O.C.G.A. SECTION 15-6-67.

Kenyon L. Miller

KENYON L. MILLER, P.L.S. #2595



11/06/2024
DATE



GRID NORTH
NAD83/GA WEST

1/06/24	7/15/24	7/08/24	7/08/24	7/02/24	DATE
CREATED BOUNDARY FOR LESS OUT TRACT 1	CHANGED SCHEDULE B II NOTE 14 TO 'INTENTIONALLY DELETED'	ADDED NOTES FOR LEGAL DESCRIPTION AND ENCROACHMENTS	REVISED PLAT TO SHOW TRACT 2 ONLY	REVISED TITLE COMMITMENT	DESCRIPTION OF REVISION
5	240321	240321	240321	240321	NO.
4	240321	240321	240321	240321	NO.
3	240321	240321	240321	240321	NO.
2	240321	240321	240321	240321	NO.
1	240321	240321	240321	240321	NO.

IronStone
SURVEYING
96 Ernest Biles Drive, Jackson, Georgia 30233
Phone 770-957-4614 / Email office@ironstonesurveying.com

BOUNDARY FOR LESS OUT TRACT 1
FOR 2074 NE EAST PARK DR F6, LLC
IN LAND LOT 343, DISTRICT 16, ROCKDALE COUNTY, GEORGIA

